

# Fossil subduction recorded by quartz from the coesite stability field

M. Alvaro<sup>1\*</sup>, M.L. Mazzucchelli<sup>1</sup>, R.J. Angel<sup>1</sup>, M. Murri<sup>1</sup>, N. Campomenosi<sup>2</sup>, M. Scambelluri<sup>2</sup>, F. Nestola<sup>3</sup>, A. Korsakov<sup>4</sup>, A.A. Tomilenko<sup>4</sup>, F. Marone<sup>5</sup> and M. Morana<sup>1</sup>

<sup>1</sup>Department of Earth and Environmental Sciences, University of Pavia, Via A. Ferrata, 1 I-27100 Pavia, Italy

<sup>2</sup>Department of Earth, Environment and Life Sciences, University of Genoa, Corso Europa 26, 16132 Genoa, Italy

<sup>3</sup>Department of Geoscience, University of Padua, Via Gradenigo 35, 35131 Padua, Italy

<sup>4</sup>V.S. Sobolev Institute of Geology and Mineralogy, Siberian Branch of the Russian Academy of Sciences, Koptyug Ave. 3, 90630090 Novosibirsk, Russia

<sup>5</sup>Swiss Light Source, Paul Scherrer Institut, 5232 Villigen, Switzerland

## ABSTRACT

Metamorphic rocks are the records of plate tectonic processes whose reconstruction relies on correct estimates of the pressures and temperatures ( $P$ - $T$ ) experienced by these rocks through time. Unlike chemical geothermobarometry, elastic geobarometry does not rely on chemical equilibrium between minerals, so it has the potential to provide information on overstepping of reaction boundaries and to identify other examples of non-equilibrium behavior in rocks. Here we introduce a method that exploits the anisotropy in elastic properties of minerals to determine the unique  $P$  and  $T$  of entrapment from a single inclusion in a mineral host. We apply it to preserved quartz inclusions in garnet from eclogite xenoliths hosted in Yakutian kimberlites (Russia). Our results demonstrate that quartz trapped in garnet can be preserved when the rock reaches the stability field of coesite (the high-pressure and high-temperature polymorph of quartz) at 3 GPa and 850 °C. This supports a metamorphic origin for these xenoliths and sheds light on the mechanisms of craton accretion from a subducted crustal protolith. Furthermore, we show that interpreting  $P$  and  $T$  conditions reached by a rock from the simple phase identification of key inclusion minerals can be misleading.

## INTRODUCTION

The mechanisms attending the downward transport of crustal material into the mantle and its return back to Earth's surface (exhumation) are still a matter of vigorous debate. Chemical information only allows the interpretation of the measurements on mineral and rock composition in terms of pressure ( $P$ ) for perfectly lithostatic systems under ideal chemical equilibrium. However, significant overstepping of reaction boundaries (Spear and Pattison, 2017) as well as the presence of non-lithostatic stresses might prevent the correct interpretation of  $P$ , and in turn depths, reached by crustal rocks during subduction and metamorphism. Host-inclusion geobarometry provides an alternative and complementary method to determine pressures and temperatures ( $P$ - $T$ ) attained during the history of rocks (Zhang, 1998; Angel et al., 2014b, 2015).

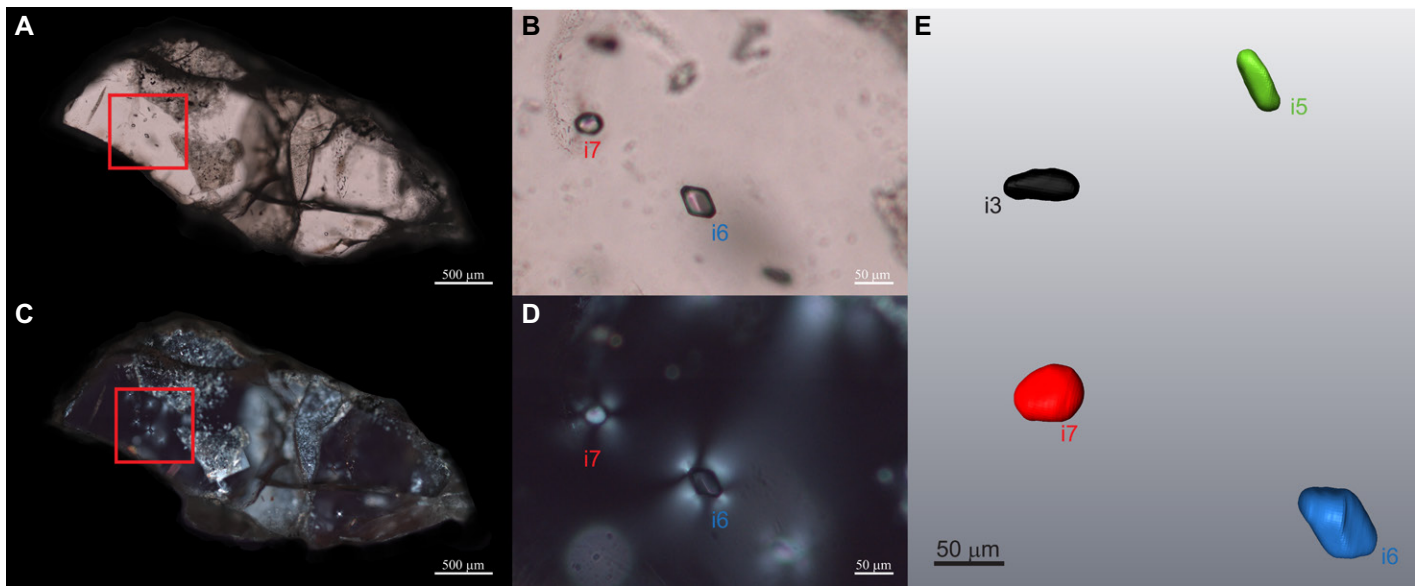
A mineral trapped as an inclusion within another host mineral is not free to expand or contract as would a free crystal but is constrained by the host mineral. This results in the development of stress in the inclusion that differs from the external stress or pressure applied to the host mineral, both while it is in the earth and afterwards when we examine the rock at room pressure in the laboratory. The stress state of the inclusion arises from the change in  $P$  and  $T$  from the time of its entrapment, so measurement of the stress state of the still-entrapped inclusion while in the laboratory enables the conditions of entrapment to be calculated, provided no plastic or brittle deformation occurred upon exhumation after entrapment. However, the current state of the art is based upon the assumption that both the host and the inclusion are elastically isotropic. But, no mineral is isotropic in elastic properties and this may cause errors in calculated  $P$  and  $T$ . This also means that a measurement of a single inclusion pressure while the host is at

room pressure provides only one constraint on the entrapment conditions. As a consequence, one can only calculate a line in  $P$ - $T$  space (the entrapment isomeke) which represents possible entrapment conditions of the inclusion (Rosenfeld and Chase, 1961; Angel et al., 2014b). Here we describe how the anisotropy of mineral inclusions can be exploited to determine unique  $P$ - $T$  conditions last recorded by the rock. The basic idea behind this approach is that an anisotropic inclusion will exhibit different stresses and strain along different crystallographic directions. By measuring these strains from a single inclusion, we obtain two or three independent data which, in combination with the known  $P$ - $T$  variation of the unit-cell parameters of the inclusion mineral and the host, enable both the  $P$  and  $T$  of entrapment or elastic equilibration of the inclusion to be determined.

## ECLOGITE XENOLITH FROM THE MIR PIPE (YAKUTIA)

The Mir pipe (Yakutian kimberlites, Russia) is a relatively young kimberlite (360 Ma) for which eruption temperatures of ~1000 °C and very fast ascent rates or short residence time (<0.1 m.y.) have been estimated (Korsakov et al., 2009; Zhukov and Korsakov, 2015). The Mir pipe kimberlite carried to the surface eclogite xenoliths made of omphacite, garnet, and rutile (Taylor et al., 2003; Tomilenko et al., 2005; Zhukov and Korsakov, 2015). The major and trace element bulk composition of these eclogite xenoliths suggests that they may be derived from subducted oceanic crust (Shimizu and Sobolev, 1995; Taylor et al., 2003). The studied xenolith contains coarse homogeneous garnet hosting relatively large primary quartz

\*E-mail: [matteo.alvaro@unipv.it](mailto:matteo.alvaro@unipv.it)



**Figure 1.** (A) Microphotography of a thin section (parallel polarized light) of eclogite xenolith from the Mir pipe (Yakutian kimberlites, Russia), where location of inclusions within the garnet host are highlighted (red box). (B) High-magnification microphotography of two inclusions highlighting the high degree of preservation of quartz crystals, absence of cracks, and back-transformation features. (C,D) In cross-polarized light images (same areas as shown in A and B), birefringence halos around selected inclusions show the presence of significant residual stresses in the inclusions. (E) Reconstructed three-dimensional microtomography of the same cluster of inclusions as in B and D (colored) and the host (gray background), which demonstrates the absence of cracks and shows that only one inclusion (i6, blue) has a very complex shape, far from a sphere or ellipsoid, for which dedicated finite element model (FEM) calculation on its specific shape is mandatory.

inclusions (Fig. 1). Previous models show that the short eruption time prevents any significant resetting of inclusion pressures by plastic flow of the garnet during upward transport from the mantle (Zhong et al., 2018). This is confirmed by the estimated residual pressures of 1.0–1.2 GPa for the quartz inclusions, which are significantly higher than 0.1–0.6 GPa reported on other quartz inclusions in garnets from coesite-grade and diamond-grade ultrahigh-pressure (UHP) rocks (see Korsakov et al., 2009). The relatively large sizes and high pressures of the inclusions and the homogeneous composition of the garnet host, coupled with the fast kimberlite ascent which may have been insufficient to reset the rock-forming minerals, make these eclogites an ideal case to test and prove the potential of anisotropic elastic geobarometry.

#### DETERMINATION OF INCLUSION STRAINS

The birefringence halos around the four selected inclusions (see Fig. 1) indicate the presence of significant residual stresses in the inclusions (Korsakov et al., 2007, 2009; Howell et al., 2010; Campomenosi et al., 2018;). The upshift of the Raman bands (Fig. 2A; for further details, see the GSA Data Repository<sup>1</sup>)

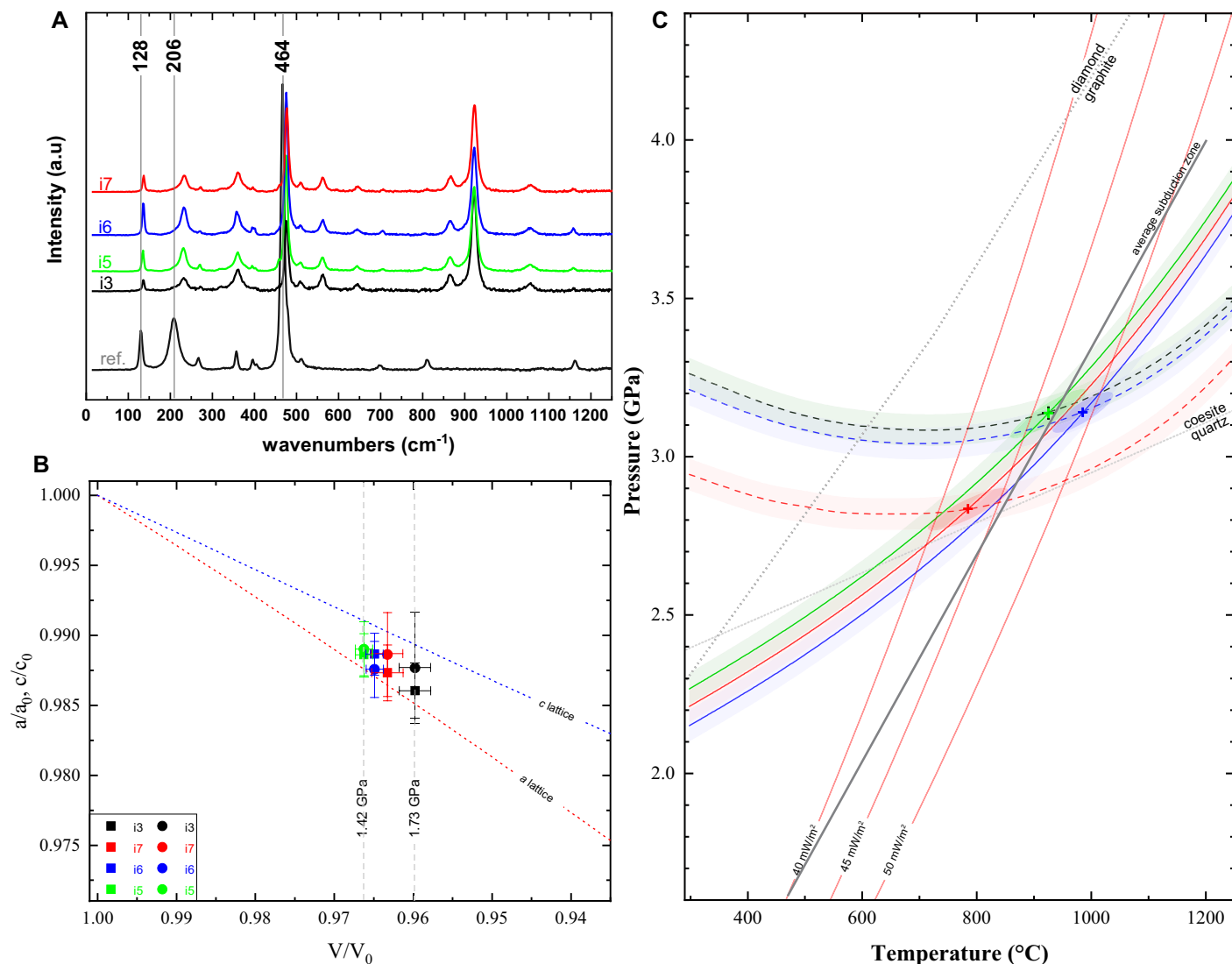
at various positions across the inclusion confirms that the inclusion is under significant residual strain. Quantitative values of the strains have been determined from the wavenumber shifts of the Raman bands at 128, 206, 464, and 696  $\text{cm}^{-1}$  by using the mode Grüneisen tensors of quartz (Murri et al., 2018, 2019; Angel et al., 2019; Bonazzi et al., 2019). The strains determined in this way from several inclusions in the same garnet are identical within estimated standard deviations, and agree with the measurements by single-crystal X-ray diffraction (Table 1).

The residual strains as determined by X-ray diffraction and by micro-Raman spectroscopy (MRS) cannot be directly used to back-calculate the residual pressure at entrapment conditions because they are the product of two processes: the contrast in the elastic properties of the host and inclusion over  $P$  and  $T$  that leads to the inclusions exhibiting an excess pressure, and the mutual elastic relaxation of the system driven by this excess pressure (Angel et al., 2014b). Before calculating entrapment conditions by using the equations of state of the host and inclusion minerals, the residual strains must be corrected for elastic relaxation (Angel et al., 2017b).

Correction for elastic relaxation of a spherical inclusion in an elastically isotropic system depends only on the elastic properties of the host and inclusion (Zhang, 1998; Angel et al., 2017b). For faceted or complex-shaped inclusions, and for all elastically anisotropic

inclusions, the final stress state depends on both the geometry of the system and the elastic anisotropy of the inclusion-host pair (Eshelby, 1957; Zhukov and Korsakov, 2015; Campomenosi et al., 2018; Mazzucchelli et al., 2018, 2019). Therefore, for all of these cases, the elastic relaxation must be calculated numerically (Mazzucchelli et al., 2018, 2019) using the exact shape of the inclusion and its full elastic properties together with those for the host. We determined the three-dimensional (3-D) model of the entire sample (see Fig. 1E) from X-ray microtomography measurements at the TOMCAT (Tomographic Microscopy and Coherent Radiology Experiments) beamline of the Swiss Light Source (SLS; Paul Scherrer Institut) (Stampanoni et al., 2006). From these images, we created a meshed 3-D model in order to perform finite element (FE) analyses that allow us to calculate the amount of elastic relaxation that has occurred (Mazzucchelli et al., 2018). Because of the anisotropy of quartz, the amount of elastic relaxation is different in different directions. Only after correction for the elastic relaxation can we demonstrate that the measured quartz inclusions were subject to isotropic strain (Table 1; Fig. 2B) as a consequence of the change of the dimensions of the cubic host mineral with  $P$  and  $T$ . The corrected strains of all four inclusions are identical within the estimated uncertainties, consistent with them having been trapped under the same conditions and having experienced the same post-entrapment history.

<sup>1</sup>GSA Data Repository item 2020006, theoretical background for the calculations, is available online at <http://www.geosociety.org/datarepository/2020/>, or on request from [editing@geosociety.org](mailto:editing@geosociety.org).



**Figure 2.** (A) Raman spectra measured on four inclusions of eclogite xenolith from the Mir pipe (Yakutian kimberlites, Russia) while still trapped in the host. a.u.—arbitrary units. (B) Residual strains ( $a/a_0$  and  $c/c_0$ ; see the Data Repository [see footnote 1] for further details) on inclusions along  $a$  and  $c$  lattice (squares and circles, respectively) after correcting for anisotropic elastic relaxation are isotropic within estimated standard deviations. Dashed lines represent hydrostatic equations of state for  $a$  and  $c$  lattice for quartz. Two boundary values of inclusion pressure are given at corresponding  $V/V_0$  value. (C) Plot with  $a$  and  $c$  lattice strains for quartz inclusions trapped in garnet as a function of temperature calculated as described in the Data Repository (see footnote 1). Dashed line is strain along  $c$  axis and solid line is strain along  $a$  axis. Shaded areas represent uncertainties on measurements. Intersection between lattice isomekes represents the unique condition of garnet elastic equilibration at the pressure and temperature that occurred under hydrostatic conditions. Ellipsoids represent correlation of uncertainties for the calculation of intersection between strains. Color coding is as in Figure 1.

### CALCULATION OF UNIQUE PRESSURE AND TEMPERATURE OF ELASTIC EQUILIBRATION

Once the measured inclusion pressure or strain (as appropriate) has been corrected for the effects of mutual relaxation, the determination of possible entrapment conditions is a purely thermodynamic calculation (see the Data Repository). In the isotropic model (Angel et al., 2014b, 2015, 2017b), entrapment conditions are calculated as the conditions under which there are no stress gradients across the host and inclusion, which leads to an entrapment isomeke, which is a line in  $P$ - $T$  space along which there

would have been no strain gradients in the system. We exploit the anisotropy of quartz and the known variation with  $P$  and  $T$  of its unit-cell parameters (for details see the Data Repository) to calculate a line of possible entrapment conditions from each of the corrected strains calculated along  $a$  and  $c$  crystallographic axes (Table 1; see details in the Data Repository). The intersection of these two lines (e.g., crossing point of dashed and solid lines in Fig. 2C) provides a unique  $P$  and  $T$  of entrapment and/or equilibration for each inclusion, three of which are very similar and cluster around 3 GPa, close to the mantle geotherms corresponding to surface heat

flow of 40–50 mW/m<sup>2</sup> considered appropriate for these eclogites (Litasov et al., 2003).

### ECLOGITE XENOLITHS: MAGMATIC OR METAMORPHIC?

We show that the quartz inclusions in the garnet of the eclogite xenoliths from the Mir kimberlite record  $P$ - $T$  conditions of elastic equilibration within the coesite stability field at pressures lower than the stability field of diamond (Fig. 2C). We can exclude the possibility that the inclusions were originally trapped as coesite and then inverted to quartz because the inclusions are perfect single crystals (see X-ray

TABLE 1. STRAINS CALCULATED FOR INCLUSIONS i3, i5, i6 AND i7 (SEE FIGURE 1) FROM MICRO-RAMAN MEASUREMENTS, TOGETHER WITH SINGLE-CRYSTAL X-RAY DIFFRACTION DATA ON INCLUSION i6 BEFORE AND AFTER SUBTRACTING THE ANISOTROPIC RELAXATION

Relaxed				
Inclusion label	$\epsilon_1 + \epsilon_2$	$\epsilon_3$	$\epsilon_v$	$\chi^2$
i6, X-ray*	-0.0182(2)	-0.0091(3)	-0.027(3)	
i6, MRS	-0.018(3)	-0.009(2)	-0.0264(11)	0.47
i5, MRS	-0.021(3)	-0.009(2)	-0.030(2)	0.46
i3, MRS	-0.021(5)	-0.009(4)	-0.030(2)	0.40
i7, MRS	-0.020(4)	-0.008(3)	-0.029(2)	0.25
Unrelaxed				
Inclusion label	$\epsilon_1 + \epsilon_2$	$\epsilon_3$	$\epsilon_v$	
i6, X-ray*	-0.0237(4)	-0.0122(6)	-0.0359(7)	
i6, MRS	-0.023(4)	-0.012(3)	-0.036(4)	
i5, MRS	-0.026(4)	-0.012(3)	-0.039(4)	
i3, MRS	-0.026(6)	-0.012(5)	-0.039(7)	
i7, MRS	-0.026(6)	-0.011(4)	-0.038(6)	

Note: MRS—micro-Raman spectroscopy. Strains are defined in the Data Repository (see text footnote 1). Estimated standard deviations are given in parentheses. For inclusions i6 and i5, strains have been determined from four Raman bands at 128, 260, 464, and 696  $\text{cm}^{-1}$ , whereas for inclusions i3 and i7, the Raman band at 696  $\text{cm}^{-1}$  has been excluded because of the poor quality of the profile and the consequent large uncertainties in the fitting results.

\*Single-crystal X-ray diffraction data on i6 are taken from Murri et al. (2018).

diffraction data in the Data Repository) and do not exhibit the palisade texture typical of quartz inclusions inverted from coesite (Schertl et al., 1991; Kotková et al., 2011). Neither is there evidence (Fig. 1) of cracks that would have allowed access of fluids to catalyze the otherwise very slow inversion from coesite. Fluid infiltration would also be required to remove silica from the inclusion to allow the pressure to drop below the pressure of the coesite-quartz equilibrium phase boundary, at which the pressure of an isolated inclusion consisting of a mixture of coesite and quartz should be buffered (Ferrero and Angel, 2018). The absence of coesite from this fragment of xenolith, which consists mostly of garnet and clinopyroxene instead, indicates that the garnet grew at relatively low  $P$ - $T$  along the prograde subduction path of a crustal protolith, which produced minor quartz that became entrapped as inclusions. Subduction

then proceeded toward UHP conditions to mantle depths of  $\sim 100$  km and the pressures in the quartz inclusions, much softer than the garnet host crystals, will lag behind the external pressures by  $\sim 1.5$  GPa (Angel et al., 2015). Therefore, at rock pressures of 3.5 GPa, the quartz experiences only 2.0 GPa, well within its stability field, and would not transform to coesite. A significant period of residence of the studied garnet at high temperatures would be consistent with the complete absence of compositional zoning and gradients in the eclogitic garnet host (Shimizu and Sobolev, 1995). We suggest that at the same time that the compositional gradients in the garnet were eliminated by diffusion, the pressure difference between the quartz inclusions and the garnet host drove plastic flow that relaxed the stress difference while maintaining the isolation of the inclusions so that no fluids were available to catalyze the quartz to coesite

transformation. Similar resetting of inclusion pressures in garnets has also been documented in metamorphic settings (Ferrero and Angel, 2018). Subsequent eruption of the kimberlite would have been sufficiently rapid to prevent further significant resetting of the inclusion stress state (Zhong et al., 2018). Therefore, the remanent pressures that we measured on these inclusions reflect resetting at mantle pressures and temperatures following subduction (see Figs. 2 and 3). We note that the resetting temperature and pressure cluster around a mantle geotherm associated with surface heat flow of 45  $\text{mW/m}^2$ , appropriate for ambient conditions at the time of the kimberlite eruption, so they may indicate that the xenolith was incorporated at the time of eruption (Litasov et al., 2003). On the other hand, the measured remanent inclusion pressures definitely exclude the possibility that the studied mantle eclogite xenoliths are the product of direct high-pressure magma crystallization at mantle depths, as already supported by geochemical evidence for other xenoliths (Griffin and O'Reilly, 2007; Aulbach et al., 2017). Direct crystallization at depth would result in either coesite inclusions, or inclusions whose remanent pressures would indicate entrapment within the stability field of quartz.

This example illustrates that the anisotropic behavior of quartz is not just a complication that may invalidate an isotropic analysis of inclusion data, but actually provides additional information that can be used in certain circumstances to provide  $P$  and  $T$  estimates that are completely independent of chemical equilibrium in the rock. The same principles and methodology can certainly be applied to any other uniaxial mineral trapped in almost isotropic host minerals such as garnets.

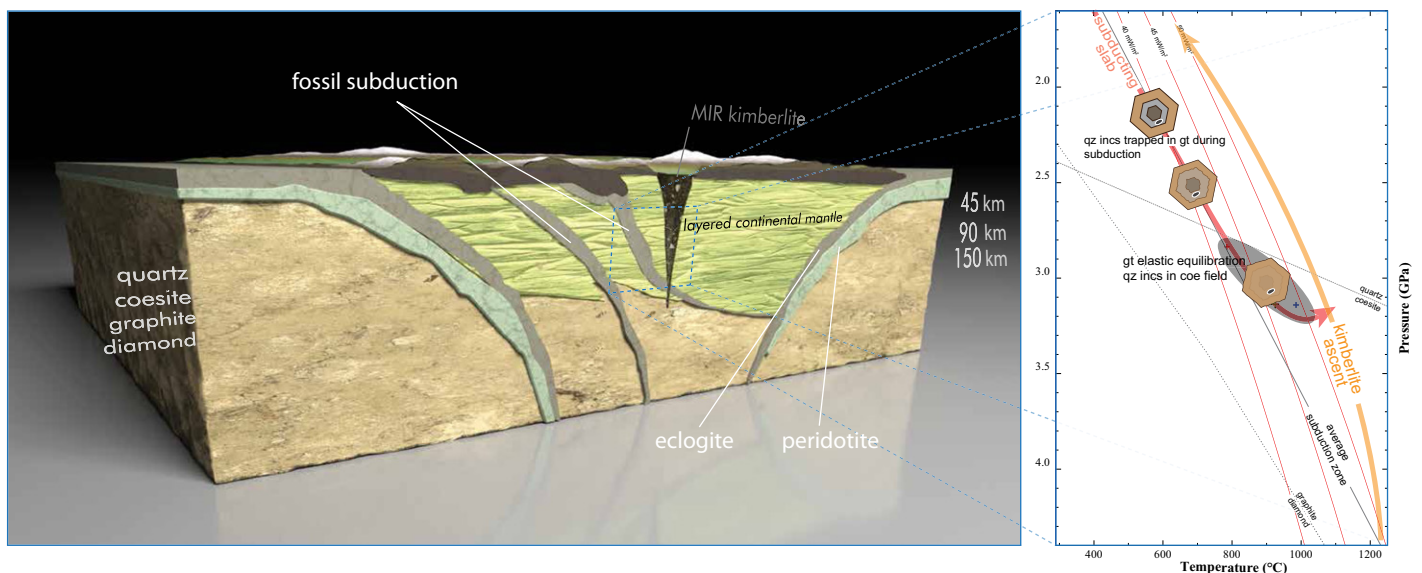


Figure 3. Schematic view of the area of Mir pipe (Yakutian kimberlites, Russia) and process from fossil subduction to elastic equilibration of garnet and subsequent exhumation during kimberlite ascent. Image not to scale. Abbreviations and color coding as in Figure 2.

## ACKNOWLEDGMENTS

This project received funding from the European Research Council under the European Union's Horizon 2020 research and innovation program grant agreement 714936 (ERC-STG TRUE DEPTHS) to M. Alvaro. Alvaro and Scambelluri have been supported by the Ministero dell'Istruzione dell'Università e della Ricerca (MIUR)Progetti di Ricerca di Interesse Nazionale (PRIN)Bando PRIN 2017 - Prot. 2017ZE49E7\_005. We acknowledge the Paul Scherrer Institut, Villigen, Switzerland, for provision of synchrotron radiation beamtime at the TOMCAT beamline of the Swiss Light Source. We thank Catherine Mottram, Jay Thomas, and one anonymous reviewer.

## REFERENCES CITED

- Angel, R.J., Mazzucchelli, M.L., Alvaro, M., Nimis, P., and Nestola, F., 2014b, Geobarometry from host-inclusion systems: The role of elastic relaxation: *American Mineralogist*, v. 99, p. 2146–2149, <https://doi.org/10.2138/am-2014-5047>.
- Angel, R.J., Nimis, P., Mazzucchelli, M.L., Alvaro, M., and Nestola, F., 2015, How large are departures from lithostatic pressure? Constraints from host-inclusion elasticity: *Journal of Metamorphic Geology*, v. 33, p. 801–813, <https://doi.org/10.1111/jmg.12138>.
- Angel, R.J., Mazzucchelli, M.L., Alvaro, M., and Nestola, F., 2017b, EosFit-Pinc: A simple GUI for host-inclusion elastic thermobarometry: *American Mineralogist*, v. 102, p. 1957–1960, <https://doi.org/10.2138/am-2017-6190>.
- Angel, R.J., Murri, M., Mihailova, B., and Alvaro, M., 2019, Stress, strain and Raman shifts: *Zeitschrift für Kristallographie—Crystalline Materials*, v. 234, p. 129–140, <https://doi.org/10.1515/zkri-2018-2112>.
- Aulbach, S., Jacob, D.E., Cartigny, P., Stern, R.A., Simonetti, S.S., Wörner, G., and Viljoen, K.S., 2017, Eclogite xenoliths from Orapa: Ocean crust recycling, mantle metasomatism and carbon cycling at the western Zimbabwe craton margin: *Geochimica et Cosmochimica Acta*, v. 213, p. 574–592, <https://doi.org/10.1016/j.gca.2017.06.038>.
- Bonazzi, M., Tumiati, S., Thomas, J., Angel, R.J., and Alvaro, M., 2019, Assessment of the reliability of elastic geobarometry with quartz inclusions: *Lithos*, <https://doi.org/10.1016/j.lithos.2019.105201>.
- Campomenosi, N., Mazzucchelli, M.L., Mihailova, B., Scambelluri, M., Angel, R.J., Nestola, F., Reali, A., and Alvaro, M., 2018, How geometry and anisotropy affect residual strain in host inclusion system: Coupling experimental and numerical approaches: *American Mineralogist*, v. 103, p. 2032–2035, <https://doi.org/10.2138/am-2018-6700CCBY>.
- Eshelby, J.D., 1957, The determination of the elastic field of an ellipsoidal inclusion, and related problems: *Proceedings of the Royal Society of London, Series A: Mathematical and Physical Sciences*, v. 241, p. 376–396, <https://doi.org/10.1098/rspa.1957.0133>.
- Ferrero, S., and Angel, R.J., 2018, Micropetrology: Are inclusions grains of truth?: *Journal of Petrology*, v. 59, p. 1671–1700, <https://doi.org/10.1093/petrology/egy075>.
- Griffin, W.L., and O'Reilly, S.Y., 2007, Cratonic lithospheric mantle: Is anything subducted?: *Episodes*, v. 30, p. 43–53, <https://doi.org/10.18814/epiiugs/2007/v30i1/006>.
- Howell, D., Wood, I.G., Dobson, D.P., Jones, A.P., Nasdala, L., and Harris, J.W., 2010, Quantifying strain birefringence halos around inclusions in diamond: Contributions to Mineralogy and Petrology, v. 160, p. 705–717, <https://doi.org/10.1007/s00410-010-0503-5>.
- Korsakov, A.V., Hutsebaut, D., Theunissen, K., Vandenberghe, P., and Stepanov, A.S., 2007, Raman mapping of coesite inclusions in garnet from the Kokchetav Massif (Northern Kazakhstan): *Spectrochimica Acta Part A: Molecular and Biomolecular Spectroscopy*, v. 68, p. 1046–1052, <https://doi.org/10.1016/j.saa.2007.04.005>.
- Korsakov, A.V., Perraki, M., Zhukov, V.P., De Gusssem, K., Vandenberghe, P., and Tomilenko, A.A., 2009, Is quartz a potential indicator of ultrahigh-pressure metamorphism? Laser Raman spectroscopy of quartz inclusions in ultrahigh-pressure garnets: *European Journal of Mineralogy*, v. 21, p. 1313–1323, <https://doi.org/10.1127/0935-1221/2009/0021-2006>.
- Kotková, J., O'Brien, P.J., and Ziemann, M.A., 2011, Diamond and coesite discovered in Saxony-type granulite: Solution to the Variscan garnet peridotite enigma: *Geology*, v. 39, p. 667–670, <https://doi.org/10.1130/G31971.1>.
- Litasov, K.D., Malkovets, V.G., Kostrovitsky, S.I., and Taylor, L.A., 2003, Petrogenesis of ilmenite-bearing symplectite xenoliths from Vitim alkaline basalts and Yakutian kimberlites, Russia: *International Geology Review*, v. 45, p. 976–997, <https://doi.org/10.2747/0020-6814.45.11.976>.
- Mazzucchelli, M.L., Burnley, P., Angel, R.J., Morganti, S., Domeneghetti, M.C., Nestola, F., and Alvaro, M., 2018, Elastic geothermobarometry: Corrections for the geometry of the host-inclusion system: *Geology*, v. 46, p. 231–234, <https://doi.org/10.1130/G39807.1>.
- Mazzucchelli, M.L., Morganti, S., Reali, A., Chiara Domeneghetti, M., Angel, R.J., and Alvaro, M., 2019, Elastic geobarometry: Relaxation of elastically anisotropic inclusions: *Lithos*, <https://doi.org/10.1016/j.lithos.2019.105218>.
- Murri, M., Mazzucchelli, M.L., Campomenosi, N., Korsakov, A.V., Prencipe, M., Mihailova, B.D., Scambelluri, M., Angel, R.J., and Alvaro, M., 2018, Raman elastic geobarometry for anisotropic mineral inclusions: *American Mineralogist*, v. 103, p. 1869–1872.
- Murri, M., Alvaro, M., Angel, R.J., Prencipe, M., and Mihailova, B.D., 2019, The effects of non-hydrostatic stress on the structure and properties of alpha-quartz: *Physics and Chemistry of Minerals*, v. 46, p. 487–499, <https://doi.org/10.1007/s00269-018-01018-6>.
- Rosenfeld, J.L., and Chase, A.B., 1961, Pressure and temperature of crystallization from elastic effects around solid inclusions in minerals?: *American Journal of Science*, v. 259, p. 519–541.
- Schertl, H.-P., Schreyer, W., and Chopin, C., 1991, The pyrope-coesite rocks and their country rocks at Parigi, Dora Maira Massif, Western Alps: Detailed petrography, mineral chemistry and PT-path: Contributions to Mineralogy and Petrology, v. 108, p. 1–21, <https://doi.org/10.1007/BF00307322>.
- Shimizu, N., and Sobolev, N.V., 1995, Young peridotitic diamonds from the Mir kimberlite pipe: *Nature*, v. 375, p. 394–397, <https://doi.org/10.1038/375394a0>.
- Spear, F.S., and Pattison, D.R., 2017, The implications of overstepping for metamorphic assemblage diagrams (MADs): *Chemical Geology*, v. 457, p. 38–46, <https://doi.org/10.1016/j.chemgeo.2017.03.011>.
- Stampanoni, M., et al., 2006, Trends in synchrotron-based tomographic imaging: The SLS experience, in *Proceedings, SPIE 6318: Developments in X-ray Tomography V*, San Diego, California, 13–17 August, 63180 M, <https://doi.org/10.1117/12.679497>.
- Taylor, L.A., Snyder, G.A., Keller, R., Remley, D.A., Anand, M., Wiesli, R., Valley, J., and Sobolev, N.V., 2003, Petrogenesis of group A eclogites and websterites: Evidence from the Obnazhennaya kimberlite, Yakutia: Contributions to Mineralogy and Petrology, v. 145, p. 424–443, <https://doi.org/10.1007/s00410-003-0465-y>.
- Tomilenko, A.A., Kovyazin, S.V., and Pokhilenko, N.P., 2005, Primary crystalline and fluid inclusions in garnet from diamondiferous eclogite from kimberlite pipes Mir and Udachnaya, Yakutiya, Russia, in *Proceedings, ECROFI XVIII, European Current Research on Fluid Inclusions*, Siena, Italy, 6–9 July.
- Zhang, Y., 1998, Mechanical and phase equilibria in inclusion-host systems: *Earth and Planetary Science Letters*, v. 157, p. 209–222, [https://doi.org/10.1016/S0012-821X\(98\)00036-3](https://doi.org/10.1016/S0012-821X(98)00036-3).
- Zhong, X., Moulas, E., and Tajčmanová, L., 2018, Tiny timekeepers witnessing high-rate exhumation processes: *Scientific Reports*, v. 8, 2234, <https://doi.org/10.1038/s41598-018-20291-7>.
- Zhukov, V.P., and Korsakov, A.V., 2015, Evolution of host-inclusion systems: A visco-elastic model: *Journal of Metamorphic Geology*, v. 33, p. 815–828, <https://doi.org/10.1111/jmg.12149>.

Printed in USA