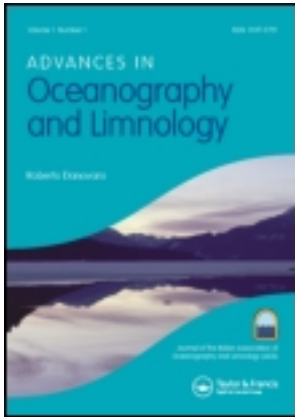


This article was downloaded by: [Alma Mater Studiorum - Università di Bologna], [Laura Airoidi]

On: 21 November 2013, At: 08:44

Publisher: Taylor & Francis

Informa Ltd Registered in England and Wales Registered Number: 1072954 Registered office: Mortimer House, 37-41 Mortimer Street, London W1T 3JH, UK



## Advances in Oceanography and Limnology

Publication details, including instructions for authors and subscription information:

<http://www.tandfonline.com/loi/taol20>

### Conservation and restoration of marine forests in the Mediterranean Sea and the potential role of Marine Protected Areas

Fabrizio Gianni<sup>a</sup>, Fabrizio Bartolini<sup>a</sup>, Laura Airoidi<sup>bc</sup>, Enric Ballesteros<sup>d</sup>, Patrice Francour<sup>a</sup>, Paolo Guidetti<sup>a</sup>, Alexandre Meinesz<sup>a</sup>, Thierry Thibaut<sup>ae</sup> & Luisa Mangialajo<sup>a</sup>

<sup>a</sup> Université Nice-Sophia Antipolis, EA 4228, ECOMERS, 06108 Nice cedex 2, France

<sup>b</sup> Dipartimento di Scienze Biologiche, Geologiche ed Ambientali BIGEA, University of Bologna, Ravenna, Italy

<sup>c</sup> Hopkins Marine Station, Stanford University, Pacific Grove, CA 93950, USA

<sup>d</sup> Centre d'Estudis Avançats de Blanes-CSIC, Acc. Cala St Francesc 14, 17300 Blanes, Spain

<sup>e</sup> Aix-Marseille University, CNRS, MIO, UM 110, 13288 Marseille, cedex 09, France

Published online: 20 Nov 2013.

To cite this article: Fabrizio Gianni, Fabrizio Bartolini, Laura Airoidi, Enric Ballesteros, Patrice Francour, Paolo Guidetti, Alexandre Meinesz, Thierry Thibaut & Luisa Mangialajo (2013) Conservation and restoration of marine forests in the Mediterranean Sea and the potential role of Marine Protected Areas, *Advances in Oceanography and Limnology*, 4:2, 83-101, DOI: [10.1080/19475721.2013.845604](https://doi.org/10.1080/19475721.2013.845604)

To link to this article: <http://dx.doi.org/10.1080/19475721.2013.845604>

PLEASE SCROLL DOWN FOR ARTICLE

Taylor & Francis makes every effort to ensure the accuracy of all the information (the "Content") contained in the publications on our platform. However, Taylor & Francis, our agents, and our licensors make no representations or warranties whatsoever as to the accuracy, completeness, or suitability for any purpose of the Content. Any opinions

and views expressed in this publication are the opinions and views of the authors, and are not the views of or endorsed by Taylor & Francis. The accuracy of the Content should not be relied upon and should be independently verified with primary sources of information. Taylor and Francis shall not be liable for any losses, actions, claims, proceedings, demands, costs, expenses, damages, and other liabilities whatsoever or howsoever caused arising directly or indirectly in connection with, in relation to or arising out of the use of the Content.

This article may be used for research, teaching, and private study purposes. Any substantial or systematic reproduction, redistribution, reselling, loan, sub-licensing, systematic supply, or distribution in any form to anyone is expressly forbidden. Terms & Conditions of access and use can be found at <http://www.tandfonline.com/page/terms-and-conditions>

## MINI-REVIEW

### Conservation and restoration of marine forests in the Mediterranean Sea and the potential role of Marine Protected Areas

Fabrizio Gianni<sup>a\*</sup>, Fabrizio Bartolini<sup>a</sup>, Laura Airoidi<sup>b,c</sup>, Enric Ballesteros<sup>d</sup>,  
Patrice Francour<sup>a</sup>, Paolo Guidetti<sup>a</sup>, Alexandre Meinesz<sup>a</sup>, Thierry Thibaut<sup>a,c</sup> and  
Luisa Mangialajo<sup>a</sup>

<sup>a</sup>Université Nice-Sophia Antipolis, EA 4228, ECOMERS, 06108 Nice cedex 2, France;  
<sup>b</sup>Dipartimento di Scienze Biologiche, Geologiche ed Ambientali BIGEA, University of Bologna,  
Ravenna, Italy; <sup>c</sup>Hopkins Marine Station, Stanford University, Pacific Grove, CA 93950, USA;  
<sup>d</sup>Centre d'Estudis Avançats de Blanes-CSIC, Acc. Cala St Francesc 14, 17300 Blanes, Spain;  
<sup>e</sup>Aix-Marseille University, CNRS, MIO, UM 110, 13288 Marseille, cedex 09, France

(Received 23 April 2013; accepted 13 September 2013)

*Cystoseira* species are some of the most important marine ecosystem-engineers, forming extended canopies comparable to land forests. Such forests are sensitive to human disturbances, like the decrease in water quality, the coastal development and the outbreak of herbivores. Conspicuous historical declines have been reported in many regions and several *Cystoseira* species are presently protected by European Union (EU) environmental policies. The aim of this work was to synthesize the conservation perspectives of *Cystoseira* forests in the Mediterranean Sea, focusing on the opportunities offered by artificial restoration and highlighting the potential role of Marine Protected Areas (MPAs). MPAs give a better protection to healthy forests than non-managed sites and may be a source of propagules for natural recovery and/or for non-destructive artificial restoration of nearby damaged forests. MPAs lacking *Cystoseira* forests may also represent preferential sites for reforestation. We proposed a flow-chart for the conservation and a reasoned restoration of *Cystoseira* in the Mediterranean Sea. The successful conservation of *Cystoseira* forests is still possible, via raising public awareness on the role of *Cystoseira* and reducing human impacts on coastal ecosystems. Such actions have to be coupled with more specific large-scale management plans, encompassing restoration actions and enforcement of protection within MPAs.

**Keywords:** *Cystoseira*; Fucales; forests; conservation; restoration; recovery; human impacts; Marine Protected Areas

#### 1. Introduction

The genus *Cystoseira* is represented by 42 species, mostly distributed in the Mediterranean Sea, but also in the Atlantic Ocean [1], from the surface to the upper circalittoral zone [2,3]. Several species are endemic to the Mediterranean Basin, that is considered the hot-spot for *Cystoseira* species [4], some of the most important marine ecosystem-engineers, forming extended canopies comparable to land forests [5]. They increase three-dimensional complexity and spatial heterogeneity of rocky bottoms, providing refuge and food for many invertebrates and fishes at different life history stages [6–13]. *Cystoseira* forests, hence, play an important functional role in Mediterranean coastal ecosystems, sustaining complex food webs and maintaining a high biodiversity.

---

\*Corresponding author. Email: [fgianni@unice.fr](mailto:fgianni@unice.fr)

Similar to other large brown seaweeds, *Cystoseira* species are highly sensitive to several human disturbances, so that conspicuous historical declines, for at least a century and especially of species thriving in rock-pools and in the infralittoral zone, have been reported in many regions of the Mediterranean Sea [14–19]. Among human impacts responsible for such regression, the increasing coastline urbanization [17] causes habitat destruction and modification of environmental characteristics (such as hydrodynamics, loads of sediments [20], nutrients [21,22] and chemical pollutants [23,24]). Proliferation of urban structures is common along the Mediterranean coasts: as an example, more than 17 km of coast close to Genoa Harbour (North West of Italy), 11.1% and 88.96% of the French whole Mediterranean and Monaco coastlines are entirely artificial (www.medam.org, last access 6 September 2013). Loss of *Cystoseira* has also been attributed to the outbreak of herbivores [15,25,26], which is a common phenomenon in many regions of the world and is sometimes caused by overfishing of their predators [27–37]. In the Mediterranean Sea, sea-urchins are considered the most important herbivores, being able to graze the macroalgal communities and to create barren grounds (i.e. rocky reef, bare or covered by encrusting coralline algae) [26,38]. High densities of sea-urchins are usually associated with over-fishing of their predators (sea-breams of the genus *Diplodus*) [38–40] and/or date mussels (*Lithophaga lithophaga*) harvest [41–45]. Although *L. lithophaga* is a protected species and its harvest banned (included in Annex IV of the Habitats Directive, in Annex II of the Bern Convention and Barcelona Convention), such fishing was very common in the past in some parts of the Mediterranean Sea and is still illegally carried on in several regions [46–50]. Another important herbivore in Mediterranean rocky bottoms is salema (*Sarpa salpa*), known to selectively graze on some *Cystoseira* species [51]. Its contribution to the general loss of *Cystoseira* in the Mediterranean Sea cannot be quantified with the present knowledge, but we cannot exclude an increase of salema abundances due to the over-fishing of their predators [52–54]. Other potential impacts causing *Cystoseira* regression that are not considered in this study, as less known and/or spread, may be agriculture, bivalve farming and scientific research in the past.

For these reasons, *Cystoseira* forests are locally considered under threat. Several Mediterranean species (*C. amentacea* var. *stricta*, *C. mediterranea*, *C. sedoides*, *C. spinosa*, *C. zosteroides*) are listed in the Annex I of the Bern Convention (Council of Europe 1979). The Mediterranean Action Plan, adopted within the framework of the Barcelona Convention (1976), identifies, in an amendment of 2009 (Annex IV, SPA/BD Protocol – United Nations Environment Programme [UNEP]), the conservation of all but one Mediterranean *Cystoseira* species (*C. compressa*) as a priority. Nevertheless, the overall benefits of these protection measures have been low so far, urging for effective conservation actions.

Here we discuss how the establishment of Marine Protected Areas (MPAs) where dense *Cystoseira* forests are still present, could favour the conservation of these habitats and their recovery. In this synthesis, we only consider MPAs that are effectively enforced [55], so that illegal fishing is not carried on and predators can control densities of sea-urchins, preventing the formation of barren grounds [38].

*Cystoseira* species are characterized by high reproductive potential, with the production of abundant large and easily sinking eggs and zygotes [56–58]. This reproductive strategy favours the formation of dense monospecific assemblages, but limits the dispersal ability [58]. The low dispersal reduces the potential for natural recovery of wide lost/degraded areas [59,60], such that artificial restoration has been suggested to be an effective way to favour the recovery of low-dispersal/long-lived species [61]. This is the case for *Cystoseira* species, whose effective reproductive strategy would allow the use of non-destructive restoration methods such as propagules or reproductive structures [62]. On

the contrary, the benefits of the restoration undertaken to restore, for instance, degraded *Posidonia oceanica* meadows have been contentious [63] because *P. oceanica* has a very low sexual reproduction potential [64] that imposes the use of techniques that may damage the source meadows [65–67]. More studies are needed to find a non-destructive technique for *P. oceanica* restoration. Finally, when *Cystoseira* forests are lost over wide areas, it may be envisaged to couple artificial restoration [19,62,68,69] with conservation and management in MPAs.

The aim of this work is to synthesize the conservation perspectives of *Cystoseira* forests in the Mediterranean Sea. We focus on the opportunities offered by artificial restoration of *Cystoseira* species, taking into account previous experiences with other large brown seaweeds worldwide, and highlighting the potential role of MPAs.

## 2. Restoration of marine forests

### 2.1. Large brown seaweeds forestation

Restoration ecology in estuarine and marine systems is a relatively recent science [61] compared to the historical restoration actions extensively carried out in terrestrial environments [70,71]. Nevertheless restoration actions have been experimented within estuarine habitats [72–75], coastal urbanized areas [76–78], wetlands [79], coral reefs [80], seagrass and eelgrass beds [81,82]. Restoration of kelp and fucoid forests has also been explored in Asia, especially China, Japan and Korea and in North and South America [83–90].

Marine forests restoration has been generally performed through three methods: transplanting juvenile or adult individuals [69,83,87,89,91], enhancing recruitment potential (by releasing a suspension of gametes/zygotes or installing fertile receptacles in the target area) [62,83,92,93] or artificially supplementing recruitment (culture of embryos/juveniles in laboratory) [83,90,94].

Transplanting juvenile or adult individuals has been the most frequently tested restoration technique. Kelps and fucoids mainly thrive on rocky exposed shores, so that an efficient fixing of individuals to the rocks has been a major challenge in these forestation attempts. In Chile individuals of *Lessonia nigrescens* were transplanted using plastic nets, rubber bands or epoxy [83,91]. In Southern California *Silvetia compressa* was transplanted by attaching small pieces of rock bearing adults or juveniles to the shore [89]. In North-western Washington (USA), juveniles of *Nereocystis luetkeana* were embedded in a propylene rope that was successively inserted in a hard plastic clip attached to the rock with epoxy putty [87]. In Southern California, Hernández-Carmona *et al.* [85] tested, in different years, two techniques to restore *Macrocystis pyrifera*: transplantation of juveniles, by tying them to the base of previously cut *Eisenia arborea*, and the enhancement of recruitment potential, by putting reproductive blades in cage-like lobster traps. The effort required by each of the two methods was comparable, and the results suggested that combining transplantation of juveniles and seeding during spring would increase the probability of a successful restoration. The enhancement of recruitment potential was also tested for *Sargassum thunbergii* in China using a concentrated suspension of germlings [93]. In another study, such a technique was applied for increasing the recruitment potential of *Lessonia nigrescens* in Northern Chile and then compared to the use of bundles of reproductive fronds fixed to the rock [83]. The same authors also tested an artificially supplemented recruitment, by seeding spores in the laboratory on different substrata that were, afterward, fixed to the rock. Another study artificially supplemented the recruitment of *N. luetkeana* by using Petri dishes as a support, but the rate of loss was very high [87].

All of the studies discussed above considered the restoration successful when a high survival and/or density of recruits was observed at the end of the experiment. However, for restoration to be successful over time, some maintenance actions also have to be planned. For example, a suspension of germlings of *Sargassum thunbergii* was released in artificial rock-pools in China made to control water motion and nutrients and favour the settling of embryos [93]. Grazing is another factor that may need to be controlled, depending on local conditions and method applied (especially when using embryos or juveniles). Many studies on the restoration of kelps and fucoids included methods to exclude herbivores: cages [95], nets [96], antifouling paint [89] or removal by hand [88,97]. The effects of grazing may vary with the density of germlings [97] and may increase with other stressors [97–99].

## 2.2. *Cystoseira* forestation

The restoration of *Cystoseira* forests in the Mediterranean Sea has been less well studied compared to that of kelps and fucoids in other parts of the world. Some studies used several methods for transplanting *Cystoseira* individuals in order to test ecological hypotheses (different from restoration): plants were tethered to other macrophytes [51], entangled in nets screwed into the rock [100], attached to plastic meshes fixed to ceramic plates [101], fastened to bricks with polyurethane foam [102] and fixed with epoxy putty, both detaching pieces of rocks bearing adult individuals [24] and directly in holes drilled into the rocks [58]. A few other studies explored specifically the reforestation potential of Mediterranean rocky shores (reviewed in Table 1) using different techniques depending on *Cystoseira* species. *Cystoseira barbata*, a species thriving in shallow and relatively sheltered waters, was transplanted in the Northern Adriatic Sea fastened to bricks with polyurethane foam [68], or fragments of rocks bearing juveniles were chiselled off, transferred and reattached with epoxy putty to the shore [19,62]. Attempts of *C. barbata* transplantation (together with *C. crinita* and *C. foeniculacea* f. *tenuiramosa*) were performed in the south of France, fixing adult plants with epoxy putty to boulders disposed in rock-pools [103]. *Cystoseira amentacea* var. *stricta*, a species that forms belts in the exposed infralittoral fringe, was transplanted fixing adult plants with epoxy putty in holes drilled into the rock [69]. *Cystoseira compressa*, which thrives in both exposed and sheltered shallow waters, was transplanted, in the infralittoral fringe of exposed shores, using the same technique as for *Cystoseira amentacea* var. *stricta* [58,69] or, in shallow sheltered zones, hooking the base to cubes of cork fitted in the holes of bricks [68]. For this latter species, however, there was a relatively high loss of transplants [68,69], because the morphology of the base of *C. compressa* made the fixing unstable. In most of the cited studies, transplantation success was high: more than 70% survival after six months for *C. compressa* and *C. amentacea* var. *stricta* [69] and about 30% survival for *C. barbata* after eight months [62]. More interestingly, fertile receptacles or new recruits were often observed in the same year in the case of adult transplantation and one year later in the case of juvenile transplantation [24,58,62,68,69]. Capitalising on the reproductive season of the target species of *Cystoseira* could, therefore, help optimising reforestation efforts.

Despite the generally high reproductive potential of *Cystoseira* species [104,105], few studies have used gametes/zygotes for restoration purposes. Perkol-Finkel *et al.* [62] intercepted recruits of *C. barbata* in the field by using a variety of artificial plates that were located in areas with high settlement potential, but low post-settlement survival probability. They compared plates of different materials (limestone, concrete and clay) and different levels of roughness (only for the clay plates), but neither factor significantly

Table 1. Studies reporting a transplantation method used either for restoring *Cystoseira* species or for testing ecological hypotheses.

Transplanted species	Stage of transplant	Topic	References	Location
<i>C. barbata</i> , <i>C. spinosa</i> var. <i>tenuior</i> , <i>C. crinita</i>	Adults	Effect of pollution	[24]	Menorca Island, Spain
<i>C. abies-marina</i>	Adults	Effect of pollution	[100]	São Miguel Island, Azores, Portugal
<i>C. amentacea</i> , <i>C. compressa</i> , <i>C. balearica</i> , <i>C. crinita</i> , <i>C. compressa</i> var. <i>pustulata</i> , <i>C. spinosa</i>	Adults	Grazing	[51]	Menorca Island, Spain
<i>Cystoseira</i> sp.	Adults	Grazing	[101]	Medes Islands, Spain
<i>C. barbata</i>	Adults	Phenology	[102]	Izola, Slovenia
<i>C. compressa</i> , <i>C. amentacea</i>	Adults	Zonation pattern	[58]	Bogliasco, Ligurian Sea, Italy
<i>C. foeniculacea</i> f. <i>tenuiramosa</i> , <i>C. barbata</i> , <i>C. crinita</i>	Adults, zygotes (plates in adult canopy)	Restoration	[103]	PACA Region, France
<i>C. amentacea</i> , <i>C. compressa</i>	Adults	Restoration	[69]	St Jean-Cap Ferrat, South of France
<i>C. barbata</i>	Juveniles	Restoration	[19]	Monte Conero, Adriatic Sea, Italy
<i>C. barbata</i>	Juveniles, zygotes (plates in canopy of adults)	Restoration	[62]	Monte Conero and surrounding urbanized coast of the Adriatic Sea, Italy
<i>C. barbata</i> , <i>C. compressa</i>	Adults, cultures of zygotes	Restoration	[68]	Izola, Slovenia; Miramare Natural Reserve, Italy

affected the settlement: after four months the plates supported variable, but generally high densities of recruits that could be used for subsequent transplantation. In Menorca, Spain, fertile receptacles were directly fixed to the rocky shore, and propagules, seeded on small stones in laboratory, were transferred to the sea (M. Sales *personal communication*). These non-destructive methods allowed obtaining new recruits without damaging *Cystoseira* forests, which is essential given the critical conservation status of these species. Important knowledge on how to obtain propagules of *Cystoseira* in tanks or Petri dishes and preserve them alive for a long time, as well as on optimal culture parameters, can be deduced from laboratory cultivation experiments developed principally for industrial and medical aims [106–111]. Such propagules can be directly released at sea (through a suspension) or maintained in culture until they reach an adequate size to be transplanted, as already done for other large brown seaweeds [83,90,93,112,113].



Similar to kelps, *Cystoseira* forestation may need maintenance actions to control biotic and abiotic factors that may decrease the survival of transplants or the density of recruits. Grazing is one of the major causes of failure in restoration activities of large brown seaweeds [87,114,115]. Negative effects of grazing have been observed in almost all *Cystoseira* transplantation experiments carried out in the Mediterranean Sea ([58,62,68,69,116], Ferrario *et al.* unpublished manuscript), and experimental exclusions of herbivores have significantly increased the survival probability ([62], Ferrario *et al.* unpublished manuscript). Potential herbivores comprise species of crustaceans, molluscs, sea-urchins and fish [51,62,101,117,118] that usually graze more on *Cystoseira* juveniles than on adults [98,119]. Other factors, such as the absence of an adult canopy and the slope of the substratum, do not seem to limit the success of transplantation [19,62]. On the contrary, the zonation pattern (the position occupied by the species on the infralittoral fringe), and in particular for *C. amentacea* var. *stricta* or *C. mediterranea*, can be a determining factor [58], being related to variable abiotic and biotic pressures [51]. Locally critical ecological factors need to be identified and taken into account for a successful restoration of *Cystoseira* forests.

### 2.3. Forestation on artificial structures

Many artificial reefs, already existing or especially conceived, have been used for the restoration of large brown seaweed forests degraded by human impacts [86,90,92,120–126]. Even if in many cases results have been considered as successful, the installation of new artificial structures, including artificial reefs, has some negative effects on the native habitats and their associated assemblages [127,128]. Therefore we consider a more sustainable alternative, the use of already existing coastal infrastructures deployed for other societal needs (i.e. piers, dikes, breakwaters, jetties, wharfs, seawalls, offshore platforms, etc.), as a scaffold for the forestation of threatened algal forests. Since coastal infrastructures are expected to proliferate alongside human population [128–131] and their current ecological value as habitats is often very poor compared to natural habitats [130,132–136], efforts to garden ecologically valuable species on their surfaces could help to elevate their ecological value without compromising their original function [62]. Despite the increasing interest and focus, little is still known about the factors affecting the success of these interventions.

Marine infrastructures offer atypical substrates for benthic assemblages in terms of orientation, exposure, structure, surface texture, physical and biotic disturbances [128], all of which are known to affect the recruitment, survival and growth of many large brown seaweeds [137–139]. Extensive transplantation experiments of juveniles of *Cystoseira barbata* to a number of breakwaters and natural sites along the Italian North Adriatic Sea ([19,62], Ferrario *et al.* unpublished manuscript) have given encouraging results. Transplantation proved to be technically feasible and not affected by the slope of the substratum. This suggests that coastal infrastructures could provide potentially adequate habitats despite the greater proportion of inclined surfaces compared to natural ones [130,140,141]. Moreover, the survival of transplants was not impaired by lack of surrounding adults, suggesting that this would not be a limiting factor when managing assemblages on new man-made infrastructures that would obviously lack adult canopies. Nevertheless, when structures were located in sandy areas, a typical setting of many coastal defence infrastructures, survival rate was low [132]: scouring of sediment could be an important limiting factor for algae development [20]. Grazing pressure also seems to be higher on artificial than on natural substrates ([62,129,142,143], Ferrario *et al.*



unpublished manuscript), so that grazers exclusion should be considered [68]. Finally, individuals transplanted on the seaward side of breakwaters could be subjected to a large dislodgment by wave action [62]. A broad-scale experiment is in progress on the Marseilles harbour dikes where concrete structures are tested to transplant fertile *Cystoseira amentacea* var. *stricta* (T. Thibaut, *personal communication*).

### 3. *Cystoseira* forests in Marine Protected Areas

Thanks to a wide array of regulations, MPAs may guarantee protection of coastal ecosystems from several kinds of direct human impacts, especially coastal development and overfishing [144–146]. Generally, in well-enforced MPAs, illegal destructive fisheries, such as date mussel harvest and blast fishing, are not practiced and high fish and macroalgal biomass are expected, as the restored/preserved high-level predators in the food webs can control the abundance of herbivores and therefore limit the grazing pressure [39,40], one of the major causes of *Cystoseira* regression [15,25,26,33,38]. Whenever released from predator control, in fact, herbivore species like sea-urchins (e.g. *Paracentrotus lividus* and *Arbacia lixula*) and fish (i.e. *Sarpa salpa*) may greatly increase in population density and overgraze erected macroalgae.

Although healthy *Cystoseira* forests can be found in MPAs, as for example in Formentera-Espardell, in Spain, and in Scandola and Port-Cros, in France [147], where an efficient fishing regulation is in force, this is not a general rule [148]. Most Mediterranean MPAs are established on rocky coasts and exposed promontories, which should be the ideal habitats for algal forests, but *Cystoseira* is often not well developed (for instance in Cap de Creus MPA, in Spain, and Piperi MPA, in Greece) [148]. Alternate states (e.g. high fish biomass and low macroalgal complexity or low fish biomass and barren grounds) are commonly observed in MPAs, probably due to other factors acting at different scales [148]. At some MPAs *Cystoseira* stands may be lacking due to natural factors, such as local physical conditions and the characteristics of the species that are locally dominant, but in other sites the lack might be related to past direct or indirect anthropogenic impacts [15]. Potentially, the date mussel harvest or the cascading effects of sea-urchins predators' overfishing may have depleted macrophyte assemblages in MPAs before the establishment of the protection regime, but historical data are generally lacking. However, at Ustica Island MPA (Sicily), extensive barren grounds appeared after the MPA establishment, likely due to the regulation of sea-urchin harvesting [149], but also to the fact that in this relatively remote island, the population density of natural fish predators (sea-brems) is low, probably due to limited juveniles' settlement [40].

Healthy dense forests can still be found in non-protected, but naturally isolated and lowly human-impacted sites, such as Bledes and Dragonera in the Balearic Islands, Kimolos in Greece or St Peter's Island and Maratea coastline in Italy (authors' *personal observation*, [148]). Such forests should be the object of priority conservation measures.

Due to the limited dispersal capability of *Cystoseira* species, the natural re-colonization of deforested areas is particularly slow [56,58,105]. To our knowledge, the only documented cases of natural recovery of *Cystoseira* have been recorded in MPAs. In the Medes MPA, *Codium vermilara* beds and some barren grounds were dominating the seascape at the moment of its establishment, and *Cystoseira* recovery started occurring only 20 years later [148,150]. In Ustica MPA, about 10 years after the disappearance of *Cystoseira* forests, a potential increase of abundance of the starfish *Marthasterias glacialis* may have contributed to the regulation of sea-urchin density and the observed natural recovery of *Cystoseira* [151]. In both cases, we suppose that fragmented reproductive populations of

*Cystoseira* were still present in scattered refuge areas, even if at low densities. Rare dispersal events, such as drifting or dispersal by animals ('zoochory') may be more common than generally assumed for some species [103], but it is generally assumed that *Cystoseira* natural recovery is unlikely, or very slow, and human-guided restoration could be a helpful tool. Healthy forests in well-preserved MPAs can represent the source of propagules useful to support rare dispersal events and non-destructive re-forestation programmes. Restoration of large brown seaweeds has already interested MPAs in different parts of the world (e.g. [35,36,68,83,89]) and we suggest that managers of MPAs, where the extension of such forests was reduced by human activities prior to the establishment of the protected area, should consider *Cystoseira* re-forestation. Indeed, the controlled abundance of herbivores in these sites may represent a better guarantee for a successful restoration. Unfortunately historical distribution of *Cystoseira* forests is largely unknown, also in areas hosting MPAs. Where grey literature, experts or local stakeholders knowledge is not enough to effectively assess the past presence/natural absence of *Cystoseira* forests, the decision may be based on similar neighbour sites or on modelling [152].

In conclusion, we suggest that MPAs have a strong potential for conservation and restoration of marine forests: both as a source of propagules and as priority sites for restoration activities. Nevertheless, they do not provide protection from large-scale impacts, such as global warming, biological invasions and decrease in water quality [153]. A large-scale spatial planning applied to MPAs and adjacent unprotected areas [154–156] with long-term monitoring programmes and restoration actions, where necessary, is probably the best perspective for *Cystoseira* forests preservation in the Mediterranean Sea [157].

#### 4. Conservation and a reasoned forestation of *Cystoseira* species

In synthesis, *Cystoseira* forests have already suffered widespread and apparently irreversible loss, much of which may have gone unnoticed. The Mediterranean Action Plan, adopted within the framework of the Barcelona Convention (1976), identifies the conservation of *Cystoseira* species as a priority and several large brown seaweeds are listed in the Red Books of Mediterranean and Black Seas (IUCN, www.iucn.org), but very few tangible focussed actions have been established (no institutional actions have been undertaken in the Mediterranean Sea to our knowledge). Therefore, the overall benefits of these protection measures have been low so far [17] and we do not have information on *Cystoseira* distribution, even in MPAs. Also little information is available about their recovery potential, and possibly, over a certain deterioration threshold, these systems may not be able to recover at all [19,34,158,159]. A correct conservation of Mediterranean marine forests should therefore rely firstly on the protection and management of existing healthy forests and secondly on the restoration of fragmented/lost ones. Some guidelines for hypothetical conservation/non-destructive restoration actions of *Cystoseira* forests can be summarized by a flow-chart (Figure 1).

The first step would be to collect information on the distribution and status of the existing forests. If forest is present, healthy and already protected (e.g. in a MPA), it would be useful establishing a regular monitoring to detect early signals of regression. If the forest is not protected, setting effective conservation actions should be considered, in addition to a regular monitoring. If instead the forest is unhealthy, management actions (including forestation) should be planned.

When the site is not forested, it is important to search for historical data: if *Cystoseira* was previously present, an artificial restoration plan should be considered, after removing

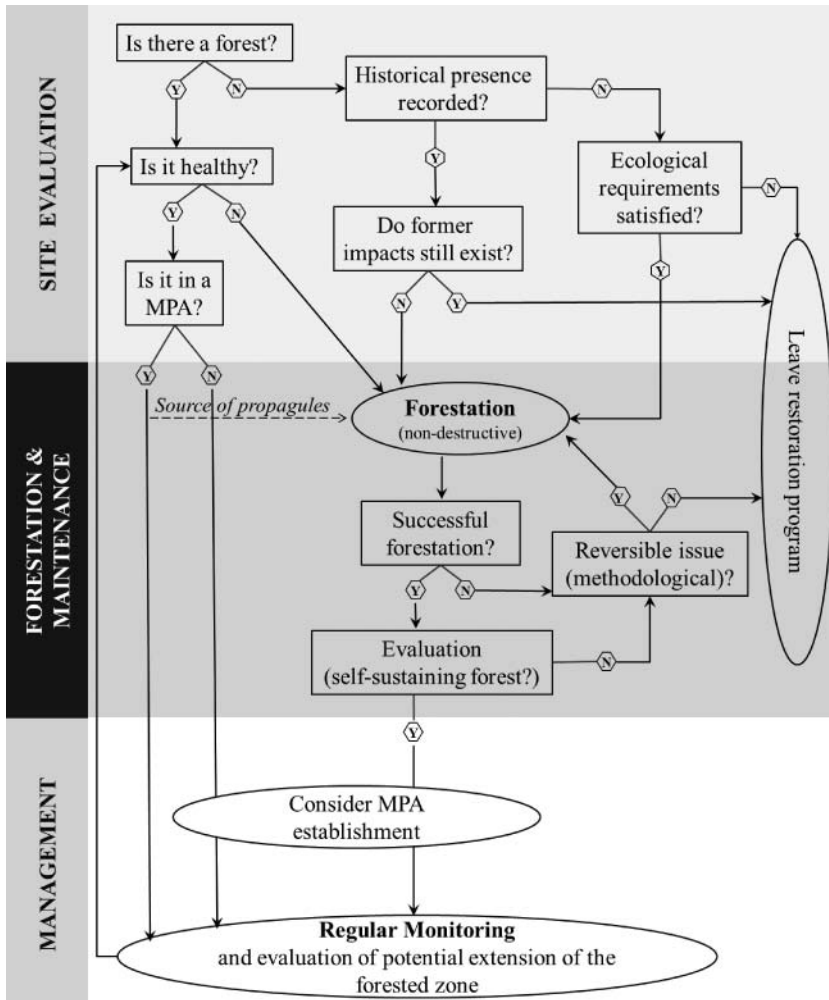


Figure 1. Flow-chart for conservation and reasoned forestation of *Cystoseira* species in the Mediterranean Sea.

the impacts that generated the loss of the forest. If such impacts are still present in the area, no forestation action should be undertaken. If no historical data are available, evaluating the local and regional environmental conditions and anthropogenic pressures could help to understand if *Cystoseira* ecological requirements are satisfied, the likelihood that *Cystoseira* forests might have occurred in the region (e.g. [152]) and if a restoration programme could succeed.

Once restoration action is deemed necessary and likely successful, a forestation method should be chosen. Several approaches have been presented and discussed here and there is not a best technique, as recovery is context-dependent, relying on life-history characteristics of the target species and on the local environmental conditions [159]. Restoration should not involve the transplantation of adults or juveniles collected from healthy forests [68,69]. This approach, although successful, should be avoided and preference should be given to non-destructive techniques based on the enhancement of natural ([62], M. Sales *personal communication*) or artificial supplemented recruitment [68].

After the first forestation phase, the established setup should be maintained (e.g. cages cleaning, nutrients supply and regulation or exclusion of herbivores) and regularly monitored to assess its success. If the forestation is not successful due to high mortality of transplants or absence of recruitment, additional forestation activities could be planned, but only in case the failure is related to reversible issues (e.g. catastrophic events, inadequate choice of the forestation or the maintenance actions). The outcome of restoration should be regularly evaluated by quantifying different variables, in the function of the chosen species/technique: survival of transplants, density and mortality of recruits and/or fertility of second generation individuals. When such variables are comparable to those measured in healthy forests, we may consider the forest as self-sustaining. Afterwards, eventual cages installed for excluding herbivores can be removed, unless they were made from biodegradable materials [84]. Successive monitoring programmes should be undertaken to detect eventual impacts affecting such a forest. If the restored area is not protected, any kind of effective management action devoted to protect the forest may be considered. A successful restoration can be also applied on the adjacent coasts, so to increase the extension of *Cystoseira* stands.

## 5. Conclusions

Marine forests of large brown seaweeds are locally disappearing in many regions of the world, together with the increase of human activities [17,160]. This trend is also occurring in several areas of the Mediterranean Sea [15], where healthy *Cystoseira* forests are highly threatened and not adequately protected [148]. An important role for forest conservation may be played by MPAs that guarantee protection from various human impacts (e.g. overfishing, urbanization) and that can reduce other ones through an integrated large-scale ecosystem-wide management with adjacent non-protected areas [155,156]. The protection of existing forests should be coupled to regular monitoring programmes in order to promptly highlight potential threats and early signs of regression. Current recovery potential for lost marine forests seems to be limited, even when the proximate drivers of loss are removed [60,161]. An active restoration represents a valuable alternative to assist the conservation of *Cystoseira* forests, but a costs/benefits assessment should be done to evaluate if protection of marine forests would be a better alternative to restore already degraded forests. This should account the economic value of direct, indirect and 'non-use' goods furnished by marine forests, a practice already performed with services provided by MPAs [162].

Several restoration techniques have been presented and discussed here and the choice is species/site dependent. Whenever possible, non-destructive techniques and biodegradable materials should be preferred and, in some cases (e.g. highly variable environments where failure could be higher) the integration of different techniques could enhance success probability [87]. The restoration of *Cystoseira* forests is particularly recommended where historical presence is recorded and the impacts that led to its loss are no longer acting in the area. Nevertheless, forestation could also be considered at sites where the previous distribution cannot be documented, but is likely, based on the local and regional environmental characteristics. Also existing artificial substrata could be considered for forestation, whenever the biotic and abiotic environmental factors are compatible, as this would enhance the ecological value of these artificial substrata without compromising their engineering function. Restoration actions should be preferentially performed in MPAs that can give a better protection than non-managed sites and guarantee the source of propagules for the recovery and/or restoration of close damaged forests.

A successful conservation of *Cystoseira* forests is still possible, as shown by the encouraging results discussed in this synthesis [19,62,68,69]. Reducing cumulative human impacts would still represent one of the most important strategies for the successful conservation and recovery of these systems, but, whenever this alone cannot reverse the loss, well-designed restoration projects can assist. Other important drivers of success would include raising public and political awareness, legal actions and enforcing MPA management plans [159,163].

### Acknowledgements

The authors wish to give special thanks to Chiara Bonaviri, Filippo Ferrario, Marta Sales and Shimrit Perkol-Finkel for their precious inputs and comments at different stages of the paper. The authors also express many thanks to three anonymous reviewers for improving this manuscript with their comments.

### Funding

The work was realized within the framework of the project MMMPA-Training Network for Monitoring Mediterranean Marine Protected Areas, that has received funding from the European Community's Seventh Framework Programme (FP7/2007-2013) [grant number 290056] (ESR for Gianni F and ER for Bartolini F). This study was also partially supported by a grant (CIRCE program) from the Pôle Mer PACA, funded from Agence de l'Eau Rhône-Méditerranée-Corse and from the project CoCoNet [grant number 287844]. Airoidi, L. was supported by projects Theseus (EU - FP7 - ENV2009-1 [grant number 244104]), MERMAID (EU FP7 - Ocean - 2011 [grant number 288710]) and by a Fulbright Fellowship while writing the paper.

### References

- [1] S.G. Draisma, E. Ballesteros, F. Rousseau, and T. Thibaut, *DNA sequence data demonstrate the polyphyly of the genus Cystoseira and other Sargassaceae genera (Phaeophyceae)*, J. Phycol. 46 (2010), pp. 1329–1345.
- [2] C. Sauvageau, *À propos des Cystoseira de Banyuls et de Guethary*, Bull. St. Biol. Arcachon 14 (1912), pp. 133–556.
- [3] J. Feldmann, *Les Algues Marines de la Côte des Albères I-III: Cyanophycées, Chlorophycées et Phéophycées de la Côte des Albères*, Vol. 197 (pl I–X), Imprimerie Wolf, Rouen, 1937.
- [4] M. Cormaci, G. Furnari, M. Catra, G. Alongi, and G. Giaccone, *Flora marina bentonica del Mediterraneo: Phaeophyceae*, Boll. Acc. Gioenia Sci. Nat. Catania 45 (2012), pp. 1–508.
- [5] C.G. Jones, J.H. Lawton, and M. Shachak, *Organisms as ecosystem engineers*, Oikos 69 (1994), pp. 373–386.
- [6] R. Molinier, *Étude des biocénoses marines du Cap Corse*, Vegetatio 9 (1960), pp. 217–312.
- [7] E. Ballesteros, *Structure and dynamics of the community of Cystoseira zosteroides (Turner) C. Agardh (Fucales, Phaeophyceae) in the Northwestern Mediterranean*, Sci. Mar. 54 (1990), pp. 217–299.
- [8] E. Ballesteros, *Structure and dynamics of the Cystoseira caespitosa Sauvageau (Fucales, Phaeophyceae) community in the North-Western Mediterranean*, Sci. Mar. 54 (1990), pp. 155–168.
- [9] E. Ballesteros, E. Sala, J. Garrabou, and M. Zabala, *Community structure and frond size distribution of a deep water stand of Cystoseira spinosa (Phaeophyta) in the Northwestern Mediterranean*, Eur. J. Phycol. 33 (1998), pp. 121–128.
- [10] R. Chemello and M. Milazzo, *Effect of algal architecture on associated fauna: Some evidence from phytal molluscs*, Mar. Biol. 140 (2002), pp. 981–990.
- [11] D. Casu, G. Ceccherelli, and N. Sechi, *Different structure of assemblages understored by three Cystoseira species occurring on the same upper-infralittoral platforms*, XVI Conferenza della Società Italiana di Ecologia, Viterbo/Civitavecchia, 2006.

- [12] E. Ballesteros, J. Garrabou, B. Hereu, M. Zabala, E. Cebrian, and E. Sala, *Deep-water stands of *Cystoseira zosteroides* C. Agardh (Fucales, Ochrophyta) in the Northwestern Mediterranean: Insights into assemblage structure and population dynamics*, *Estuar. Coast. Shelf Sci.* 82 (2009), pp. 477–484.
- [13] A. Cheminée, E. Sala, J. Pastor, P. Bodilis, P. Thiriet, L. Mangialajo, J.-M. Cottalorda, and P. Francour, *Nursery value of *Cystoseira* forests for Mediterranean rocky reef fishes*, *J. Exp. Mar. Biol. Ecol.* 442 (2013), pp. 70–79.
- [14] M. Cormaci and G. Furnari, *Changes of the benthic algal flora of the Tremiti Islands (southern Adriatic) Italy*, *Hydrobiologia* 398 (1999), pp. 75–79.
- [15] T. Thibaut, S. Pinedo, X. Torras, and E. Ballesteros, *Long-term decline of the populations of Fucales (*Cystoseira* spp. and *Sargassum* spp.) in the Albères coast (France, North-western Mediterranean)*, *Mar. Pollut. Bull.* 50 (2005), pp. 1472–1489.
- [16] D. Serio, G. Alongi, M. Catra, M. Cormaci, and G. Furnari, *Changes in the benthic algal flora of Linosa Island (Strait of Sicily, Mediterranean Sea)*, *Bot. Mar.* 49 (2006), pp. 135–144.
- [17] L. Airoidi and M.W. Beck, *Loss, status and trends for coastal marine habitats of Europe*, *Oceanogr. Mar. Biol. Annu. Rev.* 45 (2007), pp. 347–407.
- [18] T. Thibaut, B. Hereu, M.-L. Susini, J.-M. Cottalorda, L. Mangialajo, and E. Ballesteros, *Preliminary report on the evolution of the populations of Fucales in the National Park of Port-Cros (France)*, Proceedings of the 3rd Mediterranean Symposium on Marine Vegetation, United Nations Environment Programme, RAC/SPA Publisher, Marseilles, 2007.
- [19] S. Perkol-Finkel and L. Airoidi, *Loss and recovery potential of marine habitats: An experimental study of factors maintaining resilience in subtidal algal forests at the Adriatic Sea*, *PLoS ONE* 5 (2010), e10791.
- [20] L. Airoidi, *The effects of sedimentation on rocky coast assemblages*, *Oceanogr. Mar. Biol. Annu. Rev.* 41 (2003), pp. 161–236.
- [21] W. Ludwig, E. Dumont, M. Meybeck, and S. Heussner, *River discharges of water and nutrients to the Mediterranean and Black Sea: Major drivers for ecosystem changes during past and future decades?*, *Prog. Oceanogr.* 80 (2009), pp. 199–217.
- [22] M. Sales and E. Ballesteros, *Shallow *Cystoseira* (Fucales: Ochrophyta) assemblages thriving in sheltered areas from Menorca (NW Mediterranean): Relationships with environmental factors and anthropogenic pressures*, *Estuar. Coast. Shelf Sci.* 84 (2009), pp. 476–482.
- [23] R. Arévalo, S. Pinedo, and E. Ballesteros, *Changes in the composition and structure of Mediterranean rocky-shore communities following a gradient of nutrient enrichment: Descriptive study and test of proposed methods to assess water quality regarding macroalgae*, *Mar. ?Pollut. Bull.* 55 (2007), pp. 104–113.
- [24] M. Sales, E. Cebrian, F. Tomas, and E. Ballesteros, *Pollution impacts and recovery potential in three species of the genus *Cystoseira* (Fucales, Heterokontophyta)*, *Estuar. Coast. Shelf Sci.* 92 (2011), pp. 347–357.
- [25] M. Verlaque, *Biology of juveniles of the herbivorous sea urchin, *Paracentrotus lividus* (Lamarck): Selectivity of grazing and impact on rocky algal communities in Corsica (Mediterranean, France)*, *Bot. Mar.* 27 (1984), pp. 401–424.
- [26] P. Gianguzza, D. Agnetta, C. Bonaviri, F. Di Trapani, G. Visconti, F. Gianguzza, and S. ? Riggio, *The rise of thermophilic sea urchins and the expansion of barren grounds in the Mediterranean Sea*, *Chem. Ecol.* 27 (2011), pp. 129–134.
- [27] T.P. Hughes, *Catastrophes, phase-shifts, and large-scale degradation of a Caribbean coral-reef*, *Science* 265 (1994), pp. 1547–1551.
- [28] D. Pauly, V. Christensen, R. Froese, and M. Palomares, *Fishing down aquatic food webs. Industrial fishing over the past half-century has noticeably depleted the topmost links in aquatic food chains*, *Am. Sci.* 88 (2000), pp. 46–51.
- [29] J.B. Jackson, M.X. Kirby, W.H. Berger, K.A. Bjorndal, L.W. Botsford, B.J. Bourque, R.H. Bradbury, R. Cooke, J. Erlandson, and J.A. Estes, *Historical overfishing and the recent collapse of coastal ecosystems*, *Science* 293 (2001), pp. 629–637.
- [30] J.M. Pandolfi, R.H. Bradbury, E. Sala, T.P. Hughes, K.A. Bjorndal, R.G. Cooke, D. ?McArdle, L. McClenachan, M.J. Newman, and G. Paredes, *Global trajectories of the long-term decline of coral reef ecosystems*, *Science* 301 (2003), pp. 955–958.
- [31] M. Scheffer and S.R. Carpenter, *Catastrophic regime shifts in ecosystems: Linking theory to observation*, *Trends Ecol. Evol.* 18 (2003), pp. 648–656.

- [32] N.T. Shears and R.C. Babcock, *Continuing trophic cascade effects after 25 years of no-take marine reserve protection*, Mar. Ecol. Prog. Ser. 246 (2003), pp. 1–16.
- [33] F. Micheli, L. Benedetti-Cecchi, S. Gambaccini, I. Bertocci, C. Borsini, G.C. Osio, and F. Romano, *Cascading human impacts, marine protected areas, and the structure of Mediterranean reef assemblages*, Ecol. Monogr. 75 (2005), pp. 81–102.
- [34] S.D. Connell, B.D. Russell, D.J. Turner, S.A. Shepherd, T. Kildea, D. Miller, L. Airoidi, and A. Cheshire, *Recovering a lost baseline: Missing kelp forests from a metropolitan coast*, Mar. Ecol. Prog. Ser. 360 (2008), pp. 63–72.
- [35] S.D. Ling, *Range expansion of a habitat-modifying species leads to loss of taxonomic diversity: A new and impoverished reef state*, Oecologia 156 (2008), pp. 883–894.
- [36] S.D. Ling, C.R. Johnson, S.D. Frusher, and K.R. Ridgway, *Overfishing reduces resilience of kelp beds to climate-driven catastrophic phase shift*, PNAS 106 (2009), pp. 22341–22345.
- [37] C.R. Johnson, S.C. Banks, N.S. Barrett, F. Cazassus, P.K. Dunstan, G.J. Edgar, S.D. Frusher, C. Gardner, M. Haddon, F. Helidoniotis, K.L. Hill, N.J. Holbrook, G.W. Hosie, P.R. Last, S. D. Ling, J. Melbourne-Thomas, K. Miller, G.T. Pecl, A.J. Richardson, K.R. Ridgway, S.R. Rintoul, D.A. Ritz, D.J. Ross, J.C. Sanderson, S.A. Shepherd, A. Slotvinski, K.M. Swadling, and N. Taw, *Climate change cascades: Shifts in oceanography, species' ranges and subtidal marine community dynamics in eastern Tasmania*, J. Exp. Mar. Biol. Ecol. 400 (2011), pp. 17–32.
- [38] P. Guidetti, *Marine reserves reestablish lost predatory interactions and cause community changes in rocky reefs*, Ecol. Appl. 16 (2006), pp. 963–976.
- [39] E. Sala, C. Boudouresque, and M. Harmelin-Vivien, *Fishing, trophic cascades, and the structure of algal assemblages: Evaluation of an old but untested paradigm*, Oikos 82 (1998), pp. 425–439.
- [40] P. Guidetti and E. Sala, *Community-wide effects of marine reserves in the Mediterranean Sea*, Mar. Ecol. Prog. Ser. 335 (2007), pp. 43–56.
- [41] G. Fanelli, S. Piraino, G. Belmonte, S. Geraci, and F. Boero, *Human predation along Apulian rocky coasts (SE Italy): Desertification caused by *Lithophaga lithophaga* (Mollusca) fisheries*, Mar. Ecol. Prog. Ser. 110 (1994), pp. 1–8.
- [42] P. Guidetti, S. Frascchetti, A. Terlizzi, and F. Boero, *Distribution patterns of sea urchins and barrens in shallow Mediterranean rocky reefs impacted by the illegal fishery of the rock-boring mollusc *Lithophaga lithophaga**, Mar. Biol. 143 (2003), pp. 1135–1142.
- [43] P. Guidetti and F. Boero, *Desertification of Mediterranean rocky reefs caused by date-mussel, *Lithophaga lithophaga* (Mollusca: Bivalvia), fishery: effects on adult and juvenile abundance of a temperate fish*, Mar. Pollut. Bull. 48 (2004), pp. 978–982.
- [44] P. Guidetti, S. Frascchetti, A. Terlizzi, and F. Boero, *Effects of desertification caused by *Lithophaga lithophaga* (Mollusca) fishery on littoral fish assemblages along rocky coasts of southeastern Italy*, Conserv. Biol. 18 (2004), pp. 1417–1423.
- [45] P. Guidetti, *The destructive date-mussel fishery and the persistence of barrens in Mediterranean rocky reefs*, Mar. Pollut. Bull. 62 (2011), pp. 691–695.
- [46] G.F. Russo and F. Cicogna, *The date mussel (*Lithophaga lithophaga*), a 'case' in the Gulf of Naples*, in *Les Espèces Marines à Protéger en Méditerranée*, C.F. Boudouresque, M. Avon, and V. Gravez, eds., GIS Posidonie, Marseille, 1991, pp. 141–150.
- [47] S. Frascchetti, C.N. Bianchi, A. Terlizzi, G. Fanelli, C. Morri, and F. Boero, *Spatial variability and human disturbance in shallow subtidal hard substrate assemblages: A regional approach*, Mar. Ecol. Prog. Ser. 212 (2001), pp. 1–12.
- [48] M. Devescovi, B. Ozretić, and L. Iveša, *Impact of date mussel harvesting on the rocky bottom structural complexity along the Istrian coast (Northern Adriatic, Croatia)*, J. Exp. Mar. Biol. Ecol. 325 (2005), pp. 134–145.
- [49] V. Parravicini, S.F. Thrush, M. Chiantore, C. Morri, C. Croci, and C.N. Bianchi, *The legacy of past disturbance: Chronic angling impairs long-term recovery of marine epibenthic communities from acute date-mussel harvesting*, Biol. Conserv. 143 (2010), pp. 2435–2440.
- [50] E. Voultsiadou, D. Koutsoubas, and M. Achparaki, *Bivalve mollusc exploitation in Mediterranean coastal communities: An historical approach*, J. Biol. Res.-Thessalon 13 (2010), pp. 35–45.
- [51] A. Vergés, T. Alcoverro, and E. Ballesteros, *The role of fish herbivory in structuring the vertical distribution of canopy algae (*Cystoseira* spp.) in the Mediterranean Sea*, Mar. Ecol. Prog. Ser. 375 (2009), pp. 1–11.



- [52] E. Sala, *The past and present topology and structure of Mediterranean subtidal rocky-shore food webs*, *Ecosystems* 7 (2004), pp. 333–340.
- [53] F. Ferretti, R.A. Myers, F. Serena, and H.K. Lotze, *Loss of large predatory sharks from the Mediterranean Sea*, *Conserv. Biol.* 22 (2008), pp. 952–964.
- [54] P. Guidetti and F. Micheli, *Ancient art serving marine conservation*, *Front. Ecol. Environ.* 9(2011), pp. 374–375.
- [55] P. Guidetti, M. Milazzo, S. Bussotti, A. Molinari, M. Murenu, A. Pais, N. Spano, R. Balzano, T. Agardy, and F. Boero, *Italian marine reserve effectiveness: Does enforcement matter?*, *Biol. Conserv.* 141 (2008), pp. 699–709.
- [56] M. Guern, *Embryologie de quelques espèces du genre Cystoseira Agardh 1821 (Fucales)*, *Vie et Milieu, Ser. A Biol. Mar.* 13 (1962), pp. 649–679.
- [57] M. Barceló Martí, T. Gallardo, I. Pérez-Ruzafa, M. Ribera, and J. Rull, *Flora Phycologica Iberica Vol. 1. Fucales*, Universidad de Murcia, 2001.
- [58] L. Mangialajo, M. Chiantore, M.-L. Susini, A. Meinesz, R. Cattaneo-Viotti, and T. Thibaut, *Zonation patterns and interspecific relationships of furoids in microtidal environments*, *J. Exp. Mar. Biol. Ecol.* 412 (2012), pp. 72–80.
- [59] I. Diez, A. Secilla, A. Santolaria, and J.M. Gorostiaga, *Phytobenthic intertidal community structure along an environmental pollution gradient*, *Mar. Pollut. Bull.* 38 (1999), pp. 463–472.
- [60] D. Soltan, M. Verlaque, C.F. Boudouresque, and P. Francour, *Changes in macroalgal communities in the vicinity of a Mediterranean sewage outfall after the setting up of a treatment plant*, *Mar. Pollut. Bull.* 42 (2001), pp. 59–70.
- [61] M. Elliott, D. Burdon, K.L. Hemingway, and S.E. Apitz, *Estuarine, coastal and marine ecosystem restoration: Confusing management and science – A revision of concepts*, *Estuar. Coast. Shelf Sci.* 74 (2007), pp. 349–366.
- [62] S. Perkol-Finkel, F. Ferrario, V. Nicotera, and L. Airoidi, *Conservation challenges in urban seascapes: Promoting the growth of threatened species on coastal infrastructures*, *J. Appl. Ecol.* 49 (2012), pp. 1457–1466.
- [63] C.F. Boudouresque, G. Bernard, P. Bonhomme, E. Charbonnel, G. Diviacco, A. Meinesz, G. Pergent, C. Pergent-Martini, S. Ruitton, and L. Tunesi, *Préservation et Conservation des Herbiers à Posidonia Oceanica*, Ramoge pub., Marseille, France, 2006.
- [64] E. Balestri and F. Cinelli, *Sexual reproductive success in Posidonia oceanica*, *Aquat. Bot.* 75 (2003), pp. 21–32.
- [65] A. Meinesz, G. Caye, F. Loquès, and H. Molenaar, *Growth and development in culture of orthotropic rhizomes of Posidonia oceanica*, *Aquat. Bot.* 39 (1991), pp. 367–377.
- [66] A. Meinesz, H. Molenaar, E. Bellone, and F. Loques, *Vegetative reproduction in Posidonia oceanica. 1. Effects of rhizome length and transplantation season in orthotropic shoots*, *Mar. Ecol.* 13 (1992), pp. 163–174.
- [67] H. Molenaar and A. Meinesz, *Vegetative reproduction in Posidonia oceanica: Survival and development of transplanted cuttings according to different spacings, arrangements and substrates*, *Bot. Mar.* 38 (1995), pp. 313–322.
- [68] A. Falace, E. Zanelli, and G. Bressan, *Algal transplantation as a potential tool for artificial reef management and environmental mitigation*, *Bull. Mar. Sci.* 78 (2006), pp. 161–166.
- [69] M.L. Susini, L. Mangialajo, T. Thibaut, and A. Meinesz, *Development of a transplantation technique of Cystoseira amentacea var. stricta and Cystoseira compressa*, *Hydrobiologia* 580 (2007), pp. 241–244.
- [70] A.D. Bradshaw and M.J. Chadwick, *The Restoration of Land: The Ecology and Reclamation of Derelict and Degraded Land*, University of California Press, 1980.
- [71] D.R. Vallauri, J. Aronson, and M. Barbero, *An analysis of forest restoration 120 years after reforestation on badlands in the southwestern Alps*, *Restor. Ecol.* 10 (2002), pp. 16–26.
- [72] C. Simenstad, C. Tanner, C. Crandell, J. White, and J. Cordell, *Challenges of habitat restoration in a heavily urbanized estuary: Evaluating the investment*, *J. Coast. Res.* 40 (2005), pp. 6–23.
- [73] R.A. Francis, S.P.G. Hoggart, A.M. Gurnell, and C. Coode, *Meeting the challenges of urban river habitat restoration: Developing a methodology for the River Thames through central London*, *Area* 40 (2008), pp. 435–445.
- [74] R. Francis and S.G. Hoggart, *Urban river wall habitat and vegetation: Observations from the River Thames through central London*, *Urban. Ecosyst.* 12 (2009), pp. 465–485.

- [75] S.P.G. Hoggart, R.A. Francis, and M.A. Chadwick, *Macroinvertebrate richness on flood defence walls of the tidal River Thames*, Urban. Ecosyst. 15 (2012), pp. 327–346.
- [76] S.J. Hawkins, P.N. Cunningham, B. Dolan, L.C. Evans, G.D. Holmes, K. O'Hara, G. Russell, A. Walmsley, and K.N. White, *Culture of mussels in Sandon dock, a disused dock basin in Liverpool*, J. Med. Appl. Malacol. (1992), pp. 165–178.
- [77] J.R. Allen, S.B. Wilkinson, and S.J. Hawkins, *Redeveloped docks as artificial lagoons: The development of brackish-water communities and potential for conservation of lagoonal species*, Aquat. Conserv.: Mar. Freshwat. Ecosyst. 5 (1995), pp. 299–309.
- [78] S.B. Wilkinson, W. Zheng, J.R. Allen, N.J. Fielding, V.C. Wanstall, G. Russell, and S.J. Hawkins, *Water quality improvements in Liverpool docks: The role of filter feeders in algal and nutrient dynamics*, Mar. Ecol. 17 (1996), pp. 197–211.
- [79] J.B. Zedler and J.C. Callaway, *Tracking wetland restoration: Do mitigation sites follow desired trajectories?*, Restor. Ecol. 7 (2002), pp. 69–73.
- [80] W.C. Jaap, *Coral reef restoration*, Ecol. Eng. 15 (2000), pp. 345–364.
- [81] M. Fonseca, W. Kenworthy, and F. Courtney, *Development of planted seagrass beds in Tampa Bay, Florida, USA. I. Plant components*, Mar. Ecol. Prog. Ser. 132 (1996), pp. 127–139.
- [82] S.S. Bell, A. Tewfik, M.O. Hall, and M.S. Fonseca, *Evaluation of seagrass planting and monitoring techniques: Implications for assessing restoration success and habitat equivalency*, Restor. Ecol. 16 (2008), pp. 407–416.
- [83] J.A. Vasquez and F. Tala, *Repopulation of intertidal areas with *Lessonia nigrescens* in northern Chile*, J. Appl. Phycol. 7 (1995), pp. 347–349.
- [84] M.S. Stekoll and L. Deysher, *Recolonization and restoration of upper intertidal *Fucus gardneri* (Fucales, Phaeophyta) following the Exxon Valdez oil spill*, Hydrobiologia 326 (1996), pp. 311–316.
- [85] G. Hernández-Carmona, O. García, D. Robledo, and M. Foster, *Restoration techniques for *Macrocystis pyrifera* (Phaeophyceae) populations at the southern limit of their distribution in Mexico*, Bot. Mar. 43 (2000), pp. 273–284.
- [86] T. Terawaki, K. Yoshikawa, G. Yoshida, M. Uchimura, and K. Iseki, *Ecology and restoration techniques for *Sargassum* beds in the Seto Inland Sea, Japan*, Mar. Pollut. Bull. 47 (2003), pp. 198–201.
- [87] L.T. Carney, J. Waaland, T. Klinger, and K. Ewing, *Restoration of the bull kelp *Nereocystis luetkeana* in nearshore rocky habitats*, Mar. Ecol. Prog. Ser. 302 (2005), pp. 49–61.
- [88] A. Watanuki, T. Aota, E. Otsuka, T. Kawai, Y. Iwahashi, H. Kuwahara, and D. Fujita, *Restoration of kelp beds on an urchin barren: Removal of sea urchins by citizen divers in south-western Hokkaido*, Bull. Fish. Res. Agen. 32 (2010), pp. 83–87.
- [89] S.G. Whitaker, J.R. Smith, and S.N. Murray, *Reestablishment of the Southern California rocky intertidal brown alga *Silvetia compressa*: An experimental investigation of techniques and abiotic and biotic factors that affect restoration success*, Restor. Ecol. 18 (2010), pp. 18–26.
- [90] K. Yatsuya, *Techniques for the restoration of *Sargassum* beds on barren grounds*, Bull. Fish. Res. Agen. 32 (2010), pp. 69–73.
- [91] J.A. Correa, N.A. Lagos, M.H. Medina, J.C. Castilla, M. Cerda, M. Ramírez, E. Martínez, S. Faugeton, S. Andrade, and R. Pinto, *Experimental transplants of the large kelp *Lessonia nigrescens* (Phaeophyceae) in high-energy wave exposed rocky intertidal habitats of northern Chile: Experimental, restoration and management applications*, J. Exp. Mar. Biol. Ecol. 335 (2006), pp. 13–18.
- [92] T.A. Dean and D. Jung, *Transplanting giant kelp (*Macrocystis pyrifera*) onto artificial reefs: The San Clemente reef mitigation project*, Cold water diving for science: American Academy of Underwater Sciences, proceedings of the 21st Annual Scientific Diving Symposium: Alaska SeaLife Center, Seward, Alaska Vol. 1, University of Alaska Sea Grant, 2001.
- [93] Y.Q. Yu, Q.S. Zhang, Y.Z. Tang, S.B. Zhang, Z.C. Lu, S.H. Chu, and X.X. Tang, *Establishment of intertidal seaweed beds of *Sargassum thunbergii* through habitat creation and germling seeding*, Ecol. Eng. 44 (2012), pp. 10–17.
- [94] G. Yoshida, K. Yoshikawa, and T. Terawaki, *Growth and maturation of two populations of *Sargassum horneri* (Fucales, Phaeophyta) in Hiroshima Bay, the Seto Inland Sea*, Fish. Sci. 67 (2001), pp. 1023–1029.

- [95] L.J. McCook, *Effects of herbivores and water quality on Sargassum distribution on the central Great Barrier Reef: Cross-shelf transplants*, Mar. Ecol. Prog. Ser. 139 (1996), pp. 179–192.
- [96] K. Sjøtun, S.F. Eggereide, and T. Hoisaeter, *Grazer-controlled recruitment of the introduced Sargassum muticum (Phaeophyceae, Fucales) in northern Europe*, Mar. Ecol. Prog. Ser. 342 (2007), pp. 127–138.
- [97] P.R. Jonsson, L. Granhag, P.S. Moschella, P. Åberg, S.J. Hawkins, and R.C. Thompson, *Interactions between wave action and grazing control the distribution of intertidal macroalgae*, Ecology 87 (2006), pp. 1169–1178.
- [98] L. Benedetti-Cecchi and F. Cinelli, *Effects of canopy cover, herbivores and substratum type on patterns of Cystoseira spp. settlement and recruitment in littoral rockpools*, Mar. Ecol. Prog. Ser. 90 (1992), pp. 183–191.
- [99] M.I. O'Connor, *Warming strengthens an herbivore-plant interaction*, Ecology 90 (2009), pp. 388–398.
- [100] F.M. Wallenstein, D.F. Torrao, A.I. Neto, M. Wilkinson, and A.S. Rodrigues, *Effect of exposure time on the bioaccumulation of Cd, Mg, Mn and Zn in Cystoseira abies-marina samples subject to shallow water hydrothermal activity in São Miguel (Azores)*, Mar. Ecol. 30 (2009), pp. 118–122.
- [101] B. Hereu, *Depletion of palatable algae by sea urchins and fishes in a Mediterranean subtidal community*, Mar. Ecol. Prog. Ser. 313 (2006), pp. 95–103.
- [102] A. Falace and G. Bressan, *Seasonal variations of Cystoseira barbata (Stackhouse) C. Agardh frond architecture*, Mar. Biod. (2006), pp. 193–206.
- [103] P. Robvieux, *Conservation des populations de Cystoseira en régions Provence-Alpes-Côte-d'Azur et Corse*, Ph.D. diss., University of Nice-Sophia Antipolis, 2013.
- [104] M.N. Clayton, *The adaptive significance of life history characters in selected orders of marine brown macroalgae*, Aust. J. Ecol. 15 (1990), pp. 439–452.
- [105] D.R. Schiel and M.S. Foster, *The population biology of large brown seaweeds: Ecological consequences of multiphase life histories in dynamic coastal environments*, Annu. Rev. Ecol. Evol. Syst. 37 (2006), pp. 343–372.
- [106] M. Epiard-Lahaye, M. Pellegrini, and H. Weiss, *Influence des rythmes émerision-immersion sur le développement des boutures de Cystoseira stricta Sauvageau (Phéophycées, Fucales) en culture*, Bot. Mar. 30 (1987), pp. 259–266.
- [107] G. Motta, M. Cormaci, and G. Giaccone, *Osservazioni in coltura sui primi stadi di segmentazione dello zigote di alcune specie del genere Cystoseira C. Agardh (Fucales, Phaeophycophyta)*, Boll. Acc. Gioenia Sci. Nat. 21 (1988), pp. 199–208.
- [108] D. Baghdadli, G. Tremblin, M. Pellegrini, and A. Coudret, *Effects of environmental parameters on net photosynthesis of a free-living brown seaweed, Cystoseira barbata forma repens: Determination of optimal photosynthetic culture conditions*, J. Appl. Phycol. 2 (1990), pp. 281–287.
- [109] M. Pellegrini and M. Lahaye, *Overview of Cystoseira studies with special reference to prospects for farming*, in *Phycotalk*, H.D. Kumar, ed., Rastogi and Co., Meerut, 1990.
- [110] M.L. Susini, *Status et biologie de Cystoseira amentacea var. stricta*, Ph.D. diss., Université de Nice-Sophia Antipolis, 2006.
- [111] A.D. Irving, D. Balata, F. Colosio, G.A. Ferrando, and L. Airoidi, *Light, sediment, temperature, and the early life-history of the habitat-forming alga Cystoseira barbata*, Mar. Biol. 156 (2009), pp. 1223–1231.
- [112] E. Hwang, C. Park, and J. Baek, *Artificial seed production and cultivation of the edible brown alga, Sargassum fulvellum (Turner) C. Agardh: Developing a new species for seaweed cultivation in Korea*, J. Appl. Phycol. 18 (2006), pp. 251–257.
- [113] S. Pang, F. Liu, T. Shan, S. Gao, and Z. Zhang, *Cultivation of the brown alga Sargassum horneri: Sexual reproduction and seedling production in tank culture under reduced solar irradiance in ambient temperature*, J. Appl. Phycol. 21 (2009), pp. 413–422.
- [114] A.J. Mearns, D.A. Hanan, and L. Harris, *Recovery of kelp forest off Palos Verdes*, in *Southern California Coastal Water Research Project Annual Report*, Coastal Water Research Project, El Segundo, California, 1977, pp. 99–108.
- [115] J. Carter, W. Jessee, M. Foster, and A. Carpenter, *Management of artificial reefs designed to support natural communities*, Bull. Mar. Sci. 37 (1985), pp. 114–128.

- [116] M. Belegriatis, I. Bitis, A. Economou-Amilli, and J. Ott, *Epiphytic patterns of macroalgal assemblages on *Cystoseira* species (Fucales, Phaeophyta) in the east coast of Attica (Aegean Sea, Greece)*, *Hydrobiologia* 412 (1999), pp. 67–80.
- [117] L. Benedetti-Cecchi, F. Bulleri, and F. Cinelli, *The interplay of physical and biological factors in maintaining mid-shore and low-shore assemblages on rocky coasts in the north-west Mediterranean*, *Oecologia* 123 (2000), pp. 406–417.
- [118] B. Hereu, *The role of interactions between fishes, sea urchins and algae in the Northwestern Mediterranean rocky infralittoral*, Ph.D. diss., Universitat de Barcelona, 2004.
- [119] L. Benedetti-Cecchi and F. Cinelli, *Patterns of disturbance and recovery in littoral rock pools: Non-hierarchical competition and spatial variability in secondary succession*, *Mar. Ecol. Prog. Ser.* 135 (1996), pp. 145–161.
- [120] M. Ohno, S. Arai, and M. Watanabe, *Seaweed succession on artificial reefs on different bottom substrata*, *J. Appl. Phycol.* 2 (1990), pp. 327–332.
- [121] T. Terawaki, H. Hasegawa, S. Arai, and M. Ohno, *Management-free techniques for restoration of *Eisenia* and *Ecklonia* beds along the central Pacific coast of Japan*, *J. Appl. Phycol.* 13 (2001), pp. 13–17.
- [122] L.E. Deyssher, T. Dean, R. Grove, and A. Jahn, *Design considerations for an artificial reef to grow giant kelp (*Macrocystis pyrifera*) in Southern California*, *ICES J. Mar. Sci.* 59 (2002), pp. S201–207.
- [123] C.-K. Kang, E.J. Choy, Y. Son, J.-Y. Lee, J.K. Kim, Y. Kim, and K.-S. Lee, *Food web structure of a restored macroalgal bed in the eastern Korean peninsula determined by C and N stable isotope analyses*, *Mar. Biol.* 153 (2008), pp. 1181–1198.
- [124] K. Okuda, *Coastal environment and seaweed-bed ecology in Japan*, *Kuro. Sci.* 2 (2008), pp. 15–20.
- [125] K. Oyamada, M. Tsukidate, K. Watanabe, T. Takahashi, T. Isoo, and T. Terawaki, *A field test of porous carbonated blocks used as artificial reef in seaweed beds of *Ecklonia cava**, *J. Appl. Phycol.* 20 (2008), pp. 863–868.
- [126] Y.-D. Kim, J.-P. Hong, H.-I. Song, M.S. Park, T.S. Moon, and H.I. Yoo, *Studies on technology for seaweed forest construction and transplanted *Ecklonia cava* growth for an artificial seaweed reef*, *J. Environ. Biol.* 33 (2012), pp. 969–975.
- [127] M. Baine, *Artificial reefs: A review of their design, application, management and performance*, *Ocean Coast. Manage.* 44 (2001), pp. 241–259.
- [128] J.E. Dugan, L. Airoidi, M.G. Chapman, S.J. Walker, and T. Schlacher, *Estuarine and coastal structures: Environmental effects, a focus on shore and nearshore structures*, in *Treatise on Estuarine and Coastal Science*, E. Wolanski and D. McLusky, eds., Academic Press, Waltham, 2011, pp. 17–41.
- [129] P.S. Moschella, M. Abbiati, P. Åberg, L. Airoidi, J.M. Anderson, F. Bacchiocchi, F. Bulleri, G.E. Dinesen, M. Frost, E. Gacia, L. Granhag, P.R. Jonsson, M.P. Satta, A. Sundelöf, R.C. Thompson, and S.J. Hawkins, *Low-crested coastal defence structures as artificial habitats for marine life: Using ecological criteria in design*, *Coast. Eng.* 52 (2005), pp. 1053–1071.
- [130] M.G. Chapman and A.J. Underwood, *Evaluation of ecological engineering of “armoured” shorelines to improve their value as habitat*, *J. Exp. Mar. Biol. Ecol.* 400 (2011), pp. 302–313.
- [131] L.B. Firth and S.J. Hawkins, *Introductory comments - Global change in marine ecosystems: Patterns, processes and interactions with regional and local scale impacts*, *J. Exp. Mar. Biol. Ecol.* 400 (2011), pp. 1–6.
- [132] L. Airoidi, M. Abbiati, M. Beck, S. Hawkins, P.R. Jonsson, D. Martin, P. Moschella, A. Sundelöf, R. Thompson, and P. Åberg, *An ecological perspective on the deployment and design of low-crested and other hard coastal defence structures*, *Coast. Eng.* 52 (2005), pp. 1073–1087.
- [133] S. Perkol-Finkel, N. Shashar, and Y. Benayahu, *Can artificial reefs mimic natural reef communities? The roles of structural features and age*, *Mar. Environ. Res.* 61 (2006), pp. 121–135.
- [134] J. Burt, A. Bartholomew, P. Usseglio, A. Bauman, and P.F. Sale, *Are artificial reefs surrogates of natural habitats for corals and fish in Dubai, United Arab Emirates?*, *Coral Reefs* 28 (2009), pp. 663–675.
- [135] L. Airoidi and F. Bulleri, *Anthropogenic disturbance can determine the magnitude of opportunistic species responses on marine urban infrastructures*, *PLoS ONE* 6 (2011), e22985.

- [136] L.B. Firth, R.C. Thompson, F.J. White, M. Schofield, M.W. Skov, S.P.G. Hoggart, J. Jackson, A.M. Knights, and S.J. Hawkins, *The importance of water-retaining features for biodiversity on artificial intertidal coastal defence structures*, *Divers. Distrib.* (2013), pp. 1–9.
- [137] F. Bulleri and M. Chapman, *Intertidal assemblages on artificial and natural habitats in marinas on the north-west coast of Italy*, *Mar. Biol.* 145 (2004), pp. 381–391.
- [138] F. Bulleri, *Role of recruitment in causing differences between intertidal assemblages on seawalls and rocky shores*, *Mar. Ecol. Prog. Ser.* 287 (2005), pp. 53–65.
- [139] F. Bulleri and M.G. Chapman, *The introduction of coastal infrastructure as a driver of change in marine environments*, *J. Appl. Ecol.* 47 (2010), pp. 26–35.
- [140] F. Bulleri, M. Chapman, and A. Underwood, *Intertidal assemblages on seawalls and vertical rocky shores in Sydney Harbour, Australia*, *Austral Ecol.* 30 (2005), pp. 655–667.
- [141] M. Chapman and D. Blockley, *Engineering novel habitats on urban infrastructure to increase intertidal biodiversity*, *Oecologia* 161 (2009), pp. 625–635.
- [142] F. Bulleri, M. Menconi, F. Cinelli, and L. Benedetti-Cecchi, *Grazing by two species of limpets on artificial reefs in the northwest Mediterranean*, *J. Exp. Mar. Biol. Ecol.* 255 (2000), pp. 1–19.
- [143] S. Einbinder, A. Perelberg, O. Ben-Shaprut, M.H. Foucart, and N. Shashar, *Effects of artificial reefs on fish grazing in their vicinity: Evidence from algae presentation experiments*, *Mar. Environ. Res.* 61 (2006), pp. 110–119.
- [144] I. Mosquera, I.M. Côté, S. Jennings, and J.D. Reynolds, *Conservation benefits of marine reserves for fish populations*, *Anim. Conserv.* 3 (2000), pp. 321–332.
- [145] B.S. Halpern and R.R. Warner, *Matching marine reserve design to reserve objectives*, *Proc. R. Soc. Lond., Ser. B: Biol. Sci.* 270 (2003), pp. 1871–1878.
- [146] G. Russ and A. Alcalá, *Marine reserves: Long-term protection is required for full recovery of predatory fish populations*, *Oecologia* 138 (2004), pp. 622–627.
- [147] T. Thibaut, B. Hereu Fina, M.L. Susini, J.M. Cottalorda, and F. Javel, *Inventaire et cartographie des peuplements de Fucales du Parc National de Port-Cros*, Parc National de Port-Cros, France, 2005.
- [148] E. Sala, E. Ballesteros, P. Dendrinis, A. Di Franco, F. Ferretti, D. Foley, S. Fraschetti, A. Friedlander, J. Garrabou, H. Guçlusoy, P. Guidetti, B.S. Halpern, B. Hereu, A.A. Karamanlidis, Z. Kizilkaya, E. Macpherson, L. Mangialajo, S. Mariani, F. Micheli, A. Pais, K. Riser, A.A. Rosenberg, M. Sales, K.A. Selkoe, R. Starr, F. Tomas, and M. Zabala, *The structure of Mediterranean rocky reef ecosystems across environmental and human gradients, and conservation implications*, *PLoS ONE* 7 (2012), e32742.
- [149] S. Riggio and M. Milazzo, *Ricchezza specifica e biodiversità marina nell'isola di Ustica*, *Nat. Sicil. S. IV, XXVIII*, 1 (2004), pp. 559–586.
- [150] B. Hereu and X. Quintana, *El Fons Marí de les Illes Medes i el Montgrí: Quatre Dècades de Recerca per a la Conservació*, Càtedra d'Ecosistemes Litorals Mediterranis, 2012.
- [151] C. Bonaviri, T.V. Fernández, F. Badalamenti, P. Gianguzza, M. Di Lorenzo, and S. Riggio, *Fish versus starfish predation in controlling sea urchin populations in Mediterranean rocky shores*, *Mar. Ecol. Prog. Ser.* 382 (2009), pp. 129–138.
- [152] A.T. Peterson, D.R.B. Stockwell, and D.A. Kluza, *Distributional prediction based on ecological niche modeling of primary occurrence data*, in *Predicting Species Occurrences: Issues of Accuracy and Scale*, J.M. Scott, P.J. Heglund, M.L. Morrison, J.B. Haufler, M.G. Raphael, W.A. Wall, and F.B. Samson, eds., Island Press, Washington, 2002, pp. 617–623.
- [153] C. Mora, S. Andrefouet, M.J. Costello, C. Kranenburg, A. Rollo, J. Veron, K.J. Gaston, and R.A. Myers, *Coral reefs and the global network of marine protected areas*, *Science* 312 (2006), pp. 1750–1751.
- [154] H.M. Leslie and K.L. McLeod, *Confronting the challenges of implementing marine ecosystem-based management*, *Front. Ecol. Environ.* 5 (2007), pp. 540–548.
- [155] T. Agardy, G.N. Di Sciara, and P. Christie, *Mind the gap: Addressing the shortcomings of marine protected areas through large scale marine spatial planning*, *Mar. Policy* 35 (2011), pp. 226–232.
- [156] P. Guidetti, G. Notarbartolo-Di-Sciara, and T. Agardy, *Integrating pelagic and coastal MPAs into large-scale ecosystem-wide management*, *Aquat. Conserv.: Mar. Freshwat. Ecosyst.* 23 (2013), pp. 179–182.
- [157] B. Hereu, L. Mangialajo, E. Ballesteros, and T. Thibaut, *On the occurrence, structure and distribution of deep-water *Cystoseira* (Phaeophyceae) populations in the Port-Cros National Park (north-western Mediterranean)*, *Eur. J. Phycol.* 43 (2008), pp. 263–273.

- [158] B.K. Eriksson and G. Johansson, *Sedimentation reduces recruitment success of *Fucus vesiculosus* (Phaeophyceae) in the Baltic Sea*, Eur. J. Phycol. 38 (2003), pp. 217–222.
- [159] H.K. Lotze, M. Coll, A.M. Magera, C. Ward-Paige, and L. Airoidi, *Recovery of marine animal populations and ecosystems*, Trends Ecol. Evol. 26 (2011), pp. 595–605.
- [160] R.S. Steneck, M.H. Graham, B.J. Bourque, D. Corbett, J.M. Erlandson, J.A. Estes, and M.J. Tegner, *Kelp forest ecosystems: Biodiversity, stability, resilience and future*, Environ. Conserv. 29 (2002), pp. 436–459.
- [161] K. Tsiamis, P. Panayotidis, M. Salomidi, A. Pavlidou, J. Kleinteich, K. Balanika, and F.C. Kupper, *Macroalgal community response to re-oligotrophication in Saronikos Gulf*, Mar. Ecol. Prog. Ser. 472 (2013), pp. 73–85.
- [162] E. Sala, C. Costello, D. Dougherty, G. Heal, K. Kelleher, J.H. Murray, A.A. Rosenberg, and R. Sumaila, *A general business model for marine reserves*, PLoS ONE 8 (2013), e58799.
- [163] F. Micheli, N. Levin, S. Giakoumi, S. Katsanevakis, A. Abdulla, M. Coll, S. Fraschetti, S. Kark, D. Koutsoubas, and P. Mackelworth, *Setting priorities for regional conservation planning in the Mediterranean Sea*, PLoS ONE 8 (2013), e59038.