

Impact of Carbohydrate Counting Error on Glycemic Control in Open-Loop Management of Type I Diabetes: Quantitative Assessment Through an In Silico Trial

Chiara Roversi, MS¹ , Martina Vettoretti, PhD¹,
Simone Del Favero, PhD¹ , Andrea Facchinetti, PhD¹,
Pratik Choudhary, MD², Giovanni Sparacino, PhD¹ ,
and on behalf of the Hypo-RESOLVE Consortium

Journal of Diabetes Science and Technology
2022, Vol. 16(6) 1541–1549
© 2021 Diabetes Technology Society



Article reuse guidelines:
sagepub.com/journals-permissions
DOI: 10.1177/19322968211012392
journals.sagepub.com/home/dst



Abstract

Background: In the management of type I diabetes (T1D), systematic and random errors in carb-counting can have an adverse effect on glycemic control. In this study, we performed an in silico trial aiming at quantifying the impact of different levels of carb-counting error on glycemic control.

Methods: The T1D patient decision simulator was used to simulate 7-day glycemic profiles of 100 adults using open-loop therapy. The simulation was repeated for different values of systematic and random carb-counting errors, generated with Gaussian distribution varying the error mean from -10% to +10% and standard deviation (SD) from 0% to 50%. The effect of the error was evaluated by computing the difference of time inside (Δ TIR), above (Δ TAR) and below (Δ TBR) the target glycemic range (70-180mg/dl) compared to the reference case, that is, absence of error. Finally, 3 linear regression models were developed to mathematically describe how error mean and SD variations result in Δ TIR, Δ TAR, and Δ TBR changes.

Results: Random errors globally deteriorate the glycemic control; systematic underestimations lead to, on average, up to 5.2% more TAR than the reference case, while systematic overestimation results in up to 0.8% more TBR. The different time in range metrics were linearly related with error mean and SD ($R^2 > 0.95$), with slopes of $\beta_{MEAN} = 0.21$, $\beta_{SD} = -0.07$ for Δ TIR, $\beta_{MEAN} = -0.25$, $\beta_{SD} = +0.06$ for Δ TAR, and $\beta_{MEAN} = 0.05$, $\beta_{SD} = +0.01$ for Δ TBR.

Conclusions: The quantification of carb-counting error impact performed in this work may be useful understanding causes of glycemic variability and the impact of possible therapy adjustments or behavior changes in different glucose metrics.

Keywords

carbohydrate counting error, glycemic control, type I diabetes, in silico trial

Introduction

In the type 1 diabetes (T1D) therapy, blood glucose (BG) concentration is maintained within the safe range by exogenous insulin.¹ The American Diabetes Association recommends carbohydrate-counting in order to compute the meal insulin bolus,² whose beneficial effects on glycemic control, in terms of glycated hemoglobin, have been demonstrated by several studies.³⁻⁵ This approach consists in estimating the meal carbohydrates (CHO) amount, called carb-counting, and then computing the size of the meal insulin bolus by dividing the estimated CHO amount by a patient-specific factor called

carbohydrate-to-insulin ratio.⁶ However, many people living with T1D find carb-counting difficult, and despite receiving specific training about how to estimate the CHO content of different foods and meals, frequently under- or over-estimate

¹Department of Information Engineering, University of Padova, Padova, Italy

²Department of Diabetes, King's College London, London, UK

Corresponding Author:

Giovanni Sparacino, PhD, Department of Information Engineering, University of Padova, via G. Gradenigo 6B, Padova 35131, Italy
Email: gianni@dei.unipd.it

carbohydrate content that can result in excess glucose excursions.⁷⁻¹¹ In a recent study, we demonstrated that carb-counting error depends on meal CHO amount and type.¹² Recently, some smartphone applications¹³⁻¹⁵ were designed to support T1D subjects with carb-counting, but such applications are at present used only by a minority of individuals.

Some studies attempted to quantify the impact of carb-counting error on T1D patients glycemic control, showing that CHO underestimation can cause postprandial hyperglycemia, while CHO overestimation can lead to hypoglycemic episodes.¹⁶⁻²⁰ Moreover, Smart et al²¹ found that an error of ± 10 g per meal or snack on a meal size of 60g did not significantly deteriorate the postprandial control, while a ± 20 g error had a significant impact on postprandial glycemia.²²

Although errors in carb-counting can be mitigated by the adoption of closed-loop insulin delivery systems,²³ these systems are still used by only a fraction of people with T1D. A precise quantification of the impact of carb-counting errors on glycemic control in a real-life setting would be desirable. An intrinsic limitation of the existing studies lies in the difficulty to isolate the contribution of a single factor, the carb-counting error, from the contribution of many other factors that affect the daily glycemic profile of T1D subjects (eg, insulin sensitivity variability, amount and time of meals, physical activity and others). This limitation can be overcome by performing in silico trials, in which the impact of each factor can be isolated by performing multiple simulations in which a single factor is changed and all the other factors are fixed. A suitable tool for this purpose is the T1D patient decision simulator (T1D-PDS), based on the well-known FDA-approved UVA/Padova T1D physiological model,^{24,25} a simulation tool that allows performing in silico trials in T1D and was shown to reproduce realistic treatment scenarios.²⁶

In this work, we use the T1D-PDS to perform a sensitivity analysis aimed at quantifying the impact that different levels of carb-counting error have on glucose control indexes. For sake of simplicity, we do not consider the possible role of specific closed-loop algorithms and limit the analysis to virtual T1D patients treated with a standard open-loop therapy. The simulation study is first made in a single-meal scenario, to evaluate in an ideal, disturbance-free setting the impact of the error on the post prandial glucose, and then in a multi-meal scenario, to quantify the impact of the error repeated in time on the overall glycemic control represented by time in ranges. From the latter analysis, mathematical formulas which describe how time in ranges change in response to carb-counting error variations are obtained. These formulas provide, for the first time, a mathematical quantification of the extent to which carb-counting error impact glycemic control in an open-loop scenario. Such evidence could be important to assist diabetologists in patients' therapy adjustments and to build an educational tool to help patients in understanding the detrimental effects of carb-counting error.

Methods

Single-Meal Analysis

Simulation scenario. The T1D-PDS²⁶ has been used to simulate a population of 100 virtual adults undergoing multiple single-meal scenarios in a disturbance-free environment in which the meal insulin dose is calculated using the CGM value at mealtime, the therapy parameters (basal insulin injection rate in the pump, carbohydrate-to-insulin ratio CR, correction factor CF) are set to their optimal value, postprandial correction boluses and hypo-treatments as well as the time-variability of insulin sensitivity are switched-off.

In each single-meal scenario, for each virtual subject, the simulation starts at 6:00, a meal with 60g of CHO is generated at 8:00, and the respective meal insulin bolus dose is calculated as:

$$\text{Bolus Insulin} = \frac{\widehat{CHO}}{CR} + \frac{\text{Current CGM} - \text{Target BG}}{CF} \quad (1)$$

The carb-count, \widehat{CHO} , is defined as a perturbation of the true CHO amount:

$$\widehat{CHO} = CHO + \delta CHO \quad (2)$$

where δ represents the signed relative carb-counting error. Different values for δ are tested, as described in the following section, while maintaining the same surrounding conditions. In the 2hours before the meal, BG levels, expressed as mean \pm standard deviation, are 119.59 ± 6.68 mg/dl.

This kind of scenario permits us to focus on the impact that the carb-counting error has on the post-prandial glucose control, eliminating any confounding factors.

Carb-counting error generation. In each simulation, a fixed value of the carb-counting error is simulated, equal for all the subjects. Based on the analysis of real data published in Brazeau et al,⁹ we tested values of the signed relative error δ equal to $\pm 50\%$, $\pm 40\%$, $\pm 30\%$, $\pm 20\%$, $\pm 10\%$ and 0% , which, for the meal of 60g considered, correspond to signed absolute errors of ± 30 g, ± 24 g, ± 18 g, ± 12 g, ± 6 g, and 0 g, respectively.

The absence of carb-counting error, that is, when the carb-count is exactly equal to the real meal CHO amount ($\delta = 0$), represents the reference case for the problem under study.

Glucose control metrics. In the time window from mealtime (8:00) to 6hours after (14:00), the following glucose control metrics were computed: the BG post-prandial peak, the time from meal in which such peak occurs, the BG level at 120minutes after the meal, the area under the glycemic curve in hypoglycemia and hyperglycemia.

Moreover, for each of these metrics, their difference compared to the reference case (ie, ΔBG_{peak} , ΔBG_{120min} , $\Delta Time_{peak}$, ΔAUC_{hyper} , and ΔAUC_{hypo}) were also calculated. For example, the ΔBG_{peak} for a signed relative carb-counting error δ equal to δ' , was defined as:

$$\Delta BG_{peak}(\delta = \delta') = BG_{peak}(\delta = \delta') - BG_{peak}(\delta = 0) \quad (3)$$

Sensitivity to carb-counting error on post-prandial glucose. The effect of different levels of the error on post-prandial glucose was evaluated via graphical representation of the glycemic profiles of a representative virtual subject and by looking at the distribution of the glucose control metrics in the 100 subjects with a boxplot representation.

Multi-Meal Analysis

Simulation scenario. After evaluating the impact of the carb-counting error on a single meal, disturbance-free environment, we generated a more complex and realistic scenario, by simulating the same population of 100 virtual subjects for 7 days, with 3 meals per day (ie, breakfast, lunch and dinner) and open-loop therapy based on non-adjunctive CGM use. The scenario included the use of sub-optimal therapy parameters, post-prandial correction boluses, hypo-treatments, and intra-patient variability of insulin sensitivity. Meal amounts were randomly generated from Gaussian distributions fitted on the real data extracted from Brazeau et al.⁹

The entire simulation was repeated for different values of the carb-counting error, while maintaining the same surrounding conditions.

Carb-counting error generation. In the generated multi-meal scenario, 2 components of the carb-counting error were investigated: the systematic error and the random error. For this reason, the signed relative error δ , expressed as percentage of the CHO amount in the meal, was generated by using a Gaussian distribution:

$$\delta \sim N(M, SD) \quad (4)$$

where the mean M accounts for the systematic error committed by the subject, while the standard deviation SD reflects the random error.

Different signs and magnitudes of error were tested by using different mean and standard deviation values. In particular, we tested mean values of $\pm 10\%$, $\pm 5\%$, and 0% , where a negative error sign meant meal CHO underestimation, while a positive sign indicated meal CHO overestimation. For each of the mean values, we tested different values of the standard deviation, which were 0% , 10% , 20% , 30% , 40% , and 50% . Such values of error parameters have been suggested by the analysis of real data published by Brazeau et al.⁹ in which the error mean for the 50 subjects involved in the study (expressed as mean \pm standard deviation) was $-7.64\% \pm 10.18\%$, while the subjects error standard deviation was $18.10\% \pm 9.19\%$.

Moreover, each of the Gaussian distributions was truncated at -100% , which means a CHO estimate of 0g, and

$+100\%$, which means a CHO estimate of twice the real meal amount, in order to avoid unrealistic realizations of the carb-counting error.

The case of 0% mean, accounting for the absence of systematic error, and 0% standard deviation, which means that no random error is present, was considered as the reference value δ_0 :

$$\delta_0 \sim N(M = 0, SD = 0) \quad (5)$$

Glucose metrics. From the 100 subjects' glycemic profiles obtained, the following metrics were computed: Time In target Range (TIR), that is, the percentage of BG values between 70 and 180mg/dl; Time Above Range (TAR), that is, the percentage of BG values greater than 180mg/dl; Time Below Range (TBR), that is, the percentage of BG values lower than 70mg/dl.

Moreover, the delta time in ranges compared to the reference case, that is, ΔTIR , ΔTAR and ΔTBR , were also computed. For example, the ΔTIR when the carb-counting error mean M is equal to m and the carb-counting error standard deviation SD is equal to sd was defined as:

$$\Delta TIR = TIR(M = m, SD = sd) - TIR(M = 0, SD = 0) \quad (6)$$

Sensitivity to carb-counting error in the multi-meal scenario. Firstly, the impact of the carb-counting error was evaluated via boxplot representation of the delta time in ranges distribution among the 100 subjects and by plotting the curve of the delta metrics for different values of M and SD . Secondly, mathematical formulas were derived to quantify the relationship between delta time in ranges and different values of the systematic error (M) and the random error (SD). Specifically, 3 multiple linear regression models were identified by using as output the mean of delta time in ranges among the 100 virtual subjects and as inputs both the error mean and the standard deviation, as follow:

$$\Delta TIR = \alpha_{TIR}M + \beta_{TIR}SD \quad (7)$$

$$\Delta TAR = \alpha_{TAR}M + \beta_{TAR}SD \quad (8)$$

$$\Delta TBR = \alpha_{TBR}M + \beta_{TBR}SD \quad (9)$$

The linearity of the relationship between inputs and each output was verified by computing the coefficient of determination R^2 of the models. The slope coefficients α and β are sensitivity indices, which permit quantification of the strength of the impact of the 2 factors under study on the time in ranges metrics.

Results

Single-Meal Analysis

Sensitivity to carb-counting error on post-prandial glucose. Figure 1 shows the glycemic curves of a representative virtual subject for different carb-counting error levels up to 6 hours after the mealtime. We can see that CHO overestimation mitigates the peak BG level compared to the case of absence of error (black line), but it leads to BG levels lower than 70mg/dl for errors larger than 10%. The larger the error, the sooner the hypoglycemic event happens. On the other hand, CHO underestimation leads to higher BG values in all the next 6 hours.

The distributions of the postprandial glucose control metrics in the overall virtual population, expressed as differences compared to the reference case ($\delta = 0$), are reported via boxplot representation in Figure 2. The higher the overestimation error, the lower the BG peak (panel A), the BG level at 120min after the mealtime (panel B) and the AUC in hyperglycemia (panel C) compared to the reference case, at the expense of the AUC in hypoglycemia (panel D) which increases for higher positive values of carb-counting error. Conversely, increasing the underestimation error, the BG peak (panel A), the BG level at 120min after the mealtime (panel B) and the AUC in hyperglycemia (panel C) decrease, while no hypoglycemic episodes occurs for any subjects. Indeed, the AUC in hypoglycemia (panel D) remains zero for subjects who do not experience hypoglycemia in absence of carb-counting error, while it assumes negative values for the others. Moreover, the BG peak time from mealtime (panel E) decreases with CHO underestimation while increasing with CHO underestimations with an approximately linear trend.

Multi-Meal Analysis

Sensitivity to carb-counting error in the multi-meal scenario. Panels A, B and C of Figure 3 report the boxplots of the delta time in ranges metrics (ΔTIR , ΔTAR and ΔTBR) for the 100 virtual subjects, by varying the mean carb-counting error and fixing the standard deviation to 0. In this way, we can investigate the impact of a systematic error in carb-counting on the time in ranges metrics in the absence of random error. For the majority of subjects, systematic underestimations of meal CHO content (ie, error mean equal to -5% and -10%) lead to higher TAR and lower TIR than the reference case, as visible in panels B and A, respectively. Instead, systematic overestimations (ie, error mean equal to $+5\%$ and $+10\%$) lead to more TIR (panel A) at the expense of an increase TBR (panel C) in most of subjects.

Panels D, E and F of Figure 3 report the impact of the random error on the glycemic control metrics, in the absence of a systematic error. In fact, in this case, the boxplots represent the distribution of the delta time in ranges metrics (TIR , TAR , and TBR) for the 100 subjects for different values of the carb-counting error standard deviation, when the mean is

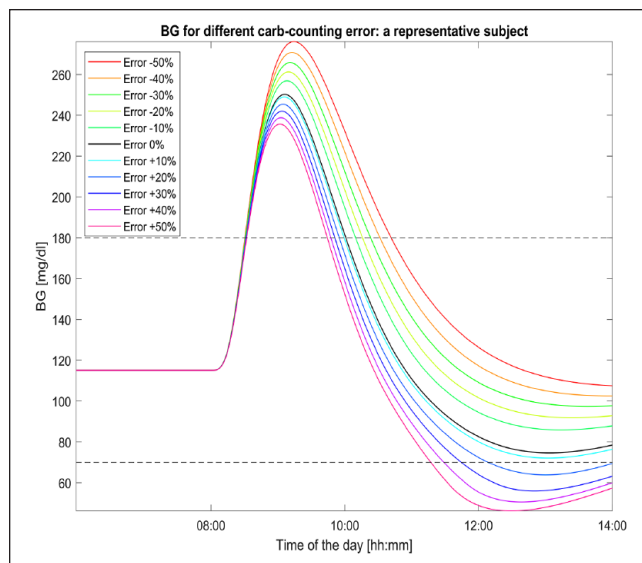


Figure 1. Glycemic profiles of a representative subject for different carb-counting error levels. The black curve (the one with error equal to 0%) represents the subject BG excursion in absence of carb-counting error. A meal of 60grams of CHO is given to the subject at 8:00.

fixed to 0. We can see that the increase of random error apparently results in a deterioration of glycemic control, that is, lower TIR (panel A) and higher TAR and TBR (panels B and C).

Figure 4 reports the bidimensional maps of the mean among the 100 subjects of the delta time in ranges metrics, for all the tested combinations of carb-counting error mean and SD. Systematic underestimation with high random error leads to up to 5.2% more of mean TAR and 5.3% less of mean TIR compared to the reference. Note that, according to the International Consensus on time in ranges,²⁷ a difference of 5% in TIR is clinically significant for individuals with T1D. Regarding the cases with systematic overestimation, the presence of large random errors results in up to a 0.8% increase of TBR over the reference. Note that the virtual subjects intake of hypotreatments, which is enabled in this simulation scenario, probably mitigates the increase of TBR due to the carb-counting error.

The mean among the 100 virtual subjects of the delta time in ranges is plotted in Figure 5 for different values of carb-counting error mean (panels A, B, and C) and SD (panels D, E, and F). Looking at the plots of Figure 5, we notice that while the starting point of each curve is different, depending either on the error mean or on its standard deviation, the plots present a similar linear trend, with a different rate of change for the different time in ranges.

This suggests that the use of a linear technique to model the relationship which links the carb-counting error mean M and standard deviation SD to variations of time in ranges may be appropriate.

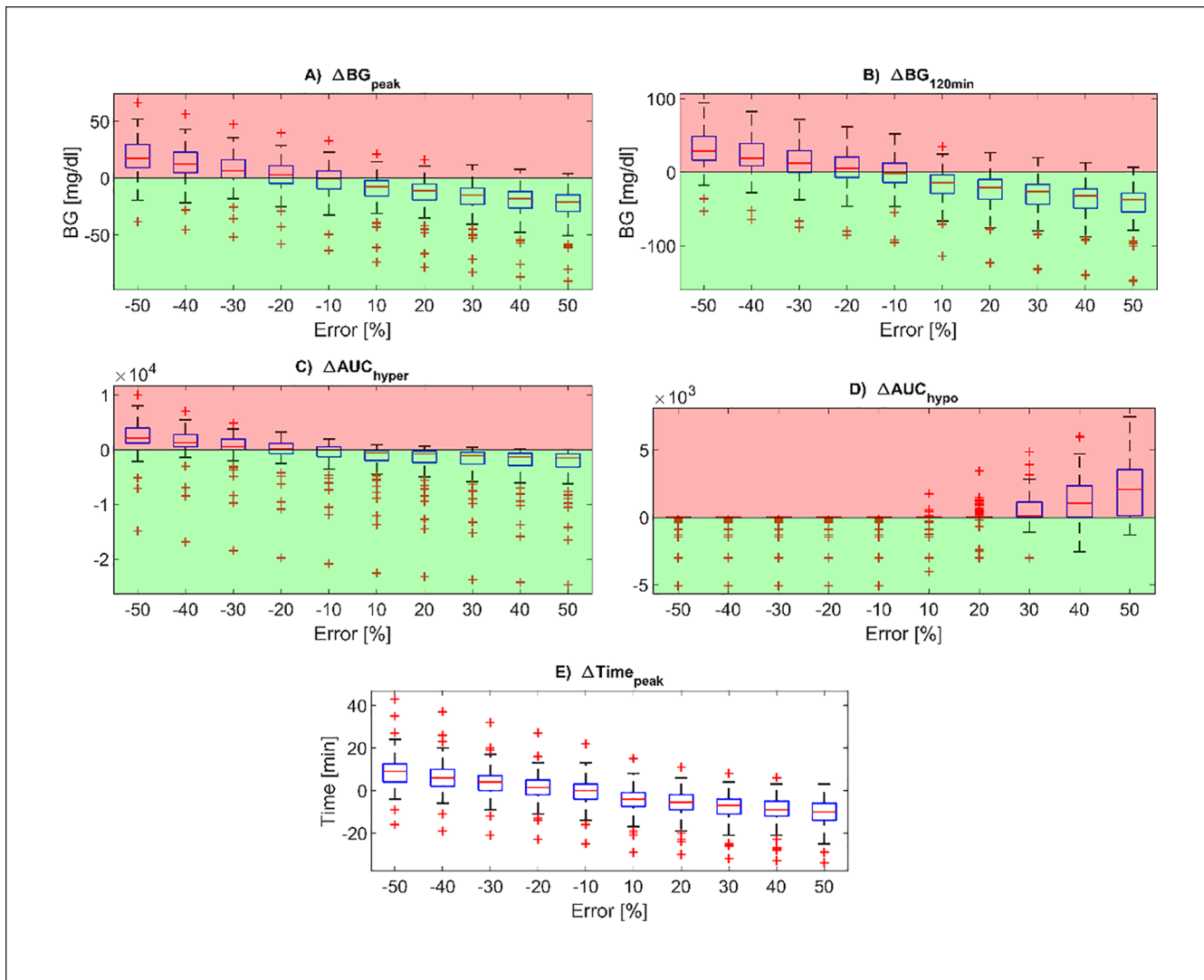


Figure 2. Boxplots of the difference in post-prandial glucose control metrics compared to the reference case, for all the carb-counting error values tested (on the x-axis). In particular, the BG peak level (panel A), BG level at 120min after the mealtime (panel B), peak time from mealtime tested (panel E), AUC in hyperglycemia (panel C) and AUC in hypoglycemia (panel D) are reported. Red zones are the ones in which the metrics are worse than for the reference case, while the green zones are the ones in which the metrics are better than for the reference case. In each boxplot, the red horizontal line represents the median, the blue box marks the interquartile range, dashed lines are the whiskers, and red crosses indicate outliers. Whiskers are drawn from the ends of the interquartile range to the adjacent values, which are the most extreme data values that are not outliers. By default, an outlier is a value that is more than 1.5 times the interquartile range away from the top or bottom of the box.

Therefore, 3 multiple linear regression models were fitted by using as outcome the delta time in ranges and as regressors M and SD . The resulting models are:

$$\Delta TIR = 0.21M - 0.07SD \tag{10}$$

$$\Delta TAR = -0.25M + 0.06SD \tag{11}$$

$$\Delta TBR = 0.05M + 0.01SD \tag{12}$$

The coefficient of determination R^2 is equal to 0.982 for the model described by equation (10), 0.987 for the one described by equation (11) and 0.970 for the model with equation (12). The obtained R^2 , very close to 1, confirm that a linear technique is appropriate for such data.

Such formulas permit us to quantify how much time in ranges change (compared to the reference case) in response to different levels of systematic and random carb-counting errors. For example, considering equation (10), we can deduce that a carb-counting error with mean of -5% and SD

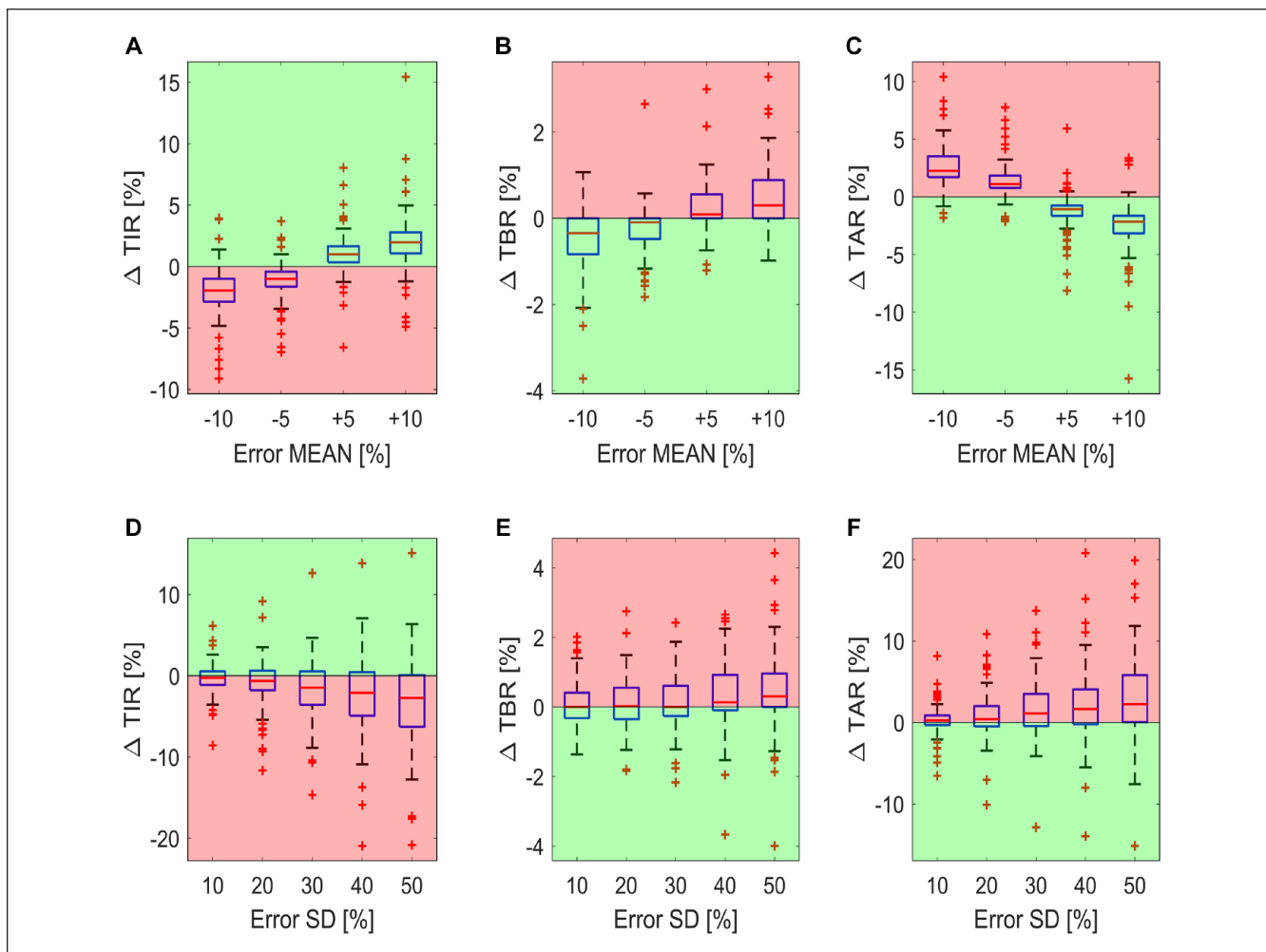


Figure 3. Boxplot of the difference in time in ranges compared to the reference case for the 100 virtual subjects. The boxplots of the Δ TIR, Δ TAR, and Δ TBR for carb-counting error SD fixed to 0 and by varying the carb-counting error mean are reported in panels A, B and C, respectively. The boxplots of the Δ TIR, Δ TAR, and Δ TBR for carb-counting error mean fixed to 0 and by varying the carb-counting error SD are reported in panels D, E, and F, respectively. Red zones are the ones in which the metrics are worse than for the reference case, while the green zones are the ones in which the metrics are better than for the reference case.

of 10% leads to a Δ TIR equal to -1.75% . This means that TIR decreases of 1.75% compared to the value of TIR which we would have in the reference case, that is, in absence of carb-counting error ($M=0$, $SD=0$). For the same value of error mean but increasing the SD to 50%, we obtain a Δ TIR of -4.55% , that is, a TIR deterioration of 4.55% compared to the reference case.

Conclusions

While errors in carbohydrate-counting are recognized as most common reasons for glycemic excursions in people with T1D, there are few data that can quantify their impact on glycemic indices. In this work, we filled this gap by analyzing the data of an in-silico trial performed by using the T1D-PDS. Firstly, the postprandial glucose excursions of 100 virtual subjects after a meal of 60-grams of CHO were simulated for

different levels of the carb-counting error in an ideal, disturbance-free scenario, to focus on the impact of the carb-counting error without any other correction actions which could influence the profiles. Differently from other previous studies, in this work a wider range of variation of the error (from $\pm 10\%$ to $\pm 50\%$ of the meal CHO amount) were investigated. Then, the impact of different carb-counting error levels on time in ranges (TIR, TAR, TBR) was evaluated by simulating 100 subjects for 7-days, repeating the simulation with the same surrounding conditions for different levels of the systematic (from -10% to $+10\%$) and the random (from 0% to 50%) carb-counting error. We found that random errors globally deteriorate the glycemic control; systematic underestimation leads to an increase of TAR of up to 5.2% compared to the reference case, while systematic overestimation increases the TBR of up to 0.8% compared to the reference case. Finally, by using the generated multi-meal simulated data, we

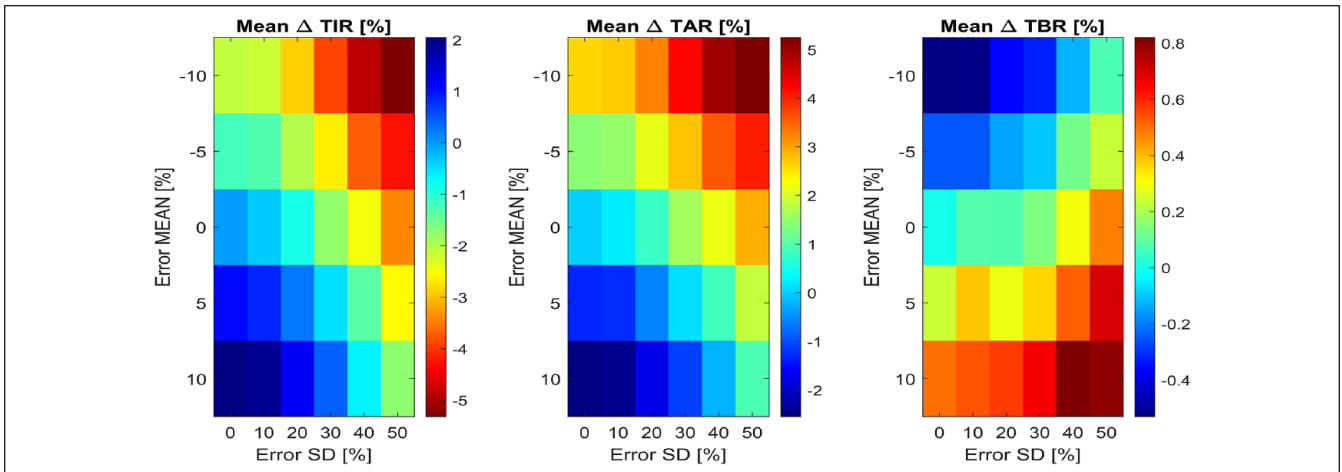


Figure 4. Bidimensional maps of the mean among the 100 virtual subjects of ΔTIR (at left), ΔTAR (in the middle) and ΔTBR (at right), for all combinations of carb-counting error mean and SD tested. In each map, the x-axis represents error SD, while the y-axis the error mean. Each color represents a different quantitative value of the metric, reported by the legends on the right of each map.

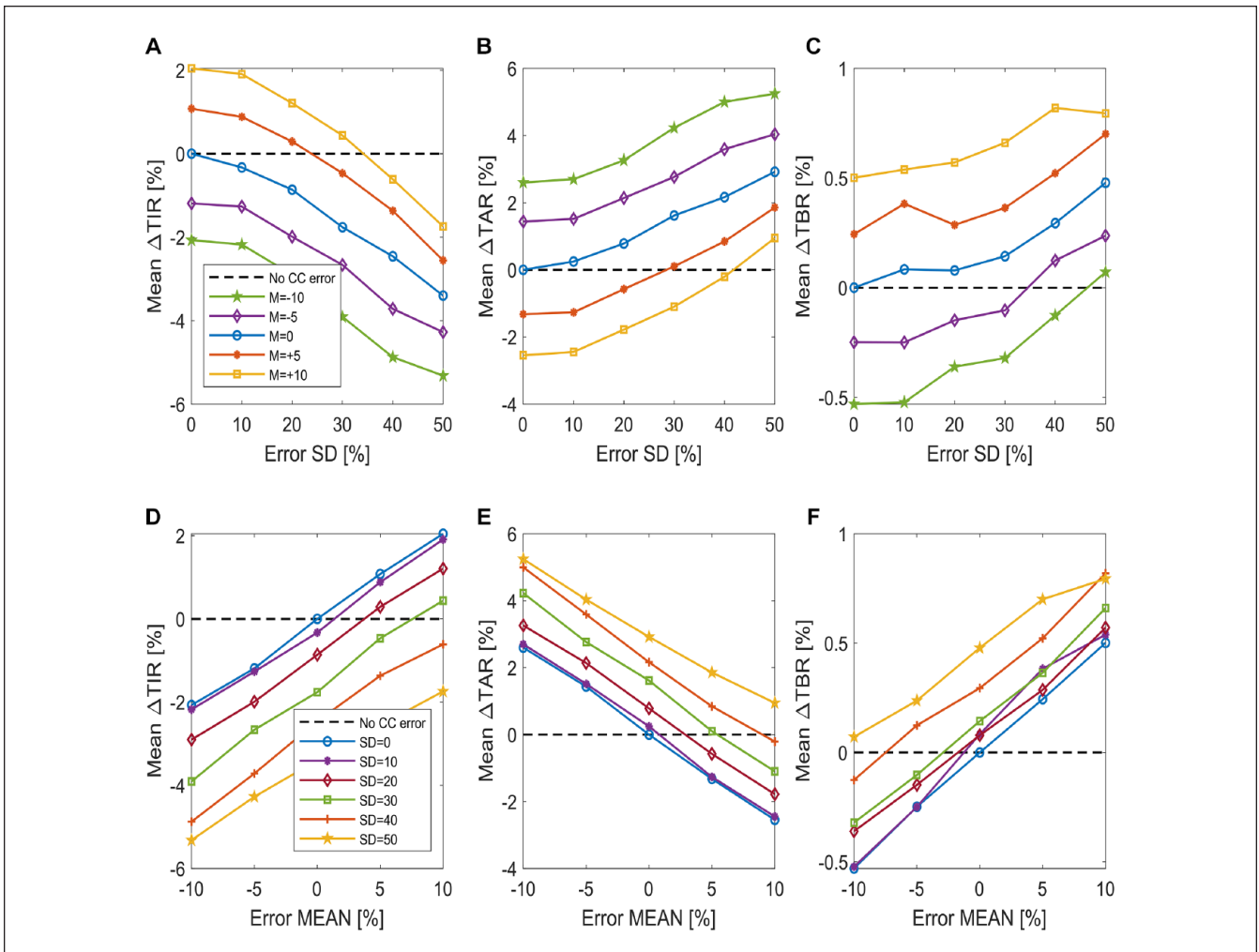


Figure 5. Plot of the mean difference in time in ranges among the 100 virtual subjects. The mean of ΔTIR , ΔTAR and ΔTBR by varying the carb-counting error SD and for different carb-counting error mean values is reported in panels A, B, and C, respectively (figures legend is reported in panel A). The mean of ΔTIR , ΔTAR , and ΔTBR by varying the carb-counting error mean and for different carb-counting error SD values is reported in panels D, E, and F, respectively (figures legend is reported in panel D).

developed 3 linear formulas which put the difference in TIR, TAR, and TBR compared to the reference case (which corresponds to the absence of carb-counting error) in relation with systematic and random carb-counting errors. These formulas permit, assuming an open-loop therapy scenario, quantification of the impact of different levels of systematic and random carb-counting error on the time in ranges.

This quantification of the impact of different types of carb-counting errors can be valuable to clinicians, researchers and people with diabetes to explain some of the glycemic excursions that occur, as well in aiding decisions around therapy adjustments. For example, the diabetologists can use the formulas we derived to guess how much the glycemic control of a patient can improve if a specific training is programmed for limiting the subject's systematic or random error in carb-counting. In an equivalent way, the diabetologist can opt for adjusting the patient's carbohydrate-to-insulin ratio in order to compensate a systematic error in carb-counting by producing the same benefits in time in ranges estimated by our formulas. However, even if the quantification of the carb-counting error impact can be useful to clinicians for the reasons explained above, we do not provide any indication about how diabetologists must adjust therapy parameters based on our findings. Moreover, the obtained formulas can also be integrated in educational tools usable to help subjects in understanding the detrimental effects of some behavioral aspects, such as carb-counting error, on glycemic control.

It is important to remark that the quantitative results reported in this paper are valid in an open-loop scenario only. Indeed, we expect that the impact of the carb-counting error may be mitigated by the use of sophisticated closed-loop approaches and technologies. It is possible that these formulas can be used to stress-test the impact of carbohydrate counting errors in novel closed-loop algorithms.

Moreover, it must be emphasized that, in our study, we simulated rapidly absorbed meals completely made of CHO, since the T1D-PDS does not include a model of the absorption of more complex meals containing also proteins and fats, and thus it cannot simulate slow-absorption meals. Of course, the impact of the carb-counting error could be different if slow-absorption meals and/or the effect of other macronutrients are considered in the analysis. If an updated meal absorption model should become available and be included in the T1D-PDS, the analysis performed in this paper could be repeated considering different meal compositions.

To conclude, we point out that the same paradigm proposed here could be extended to the quantitative analysis of the role of other behavioral factors in the management of T1D that have a detrimental impact on glycemic control: delays in meal insulin bolus, wrong estimation of insulin on board, excessive or insufficient hypotreatment dose, inappropriate CGM alert settings, delay in responding to CGM alerts. Thus, future work could also include the development of a suitable mathematical methodology to compare the

impact of these behavioral factors on glycemic control indices and, eventually, provide healthcare providers and educators with a ranking indicating which behavioral factors influence glycemic control most.

Abbreviations

AUC, Area Under the Curve; BG, Blood Glucose; CGM, Continuous Glucose Monitoring; CHO, Carbohydrates; TAR, Time Above Range; TBR, Time Below Range; T1D, Type 1 Diabetes; T1D-PDS, Type 1 Diabetes Patient Decision Simulator; TIR, Time In target Range.

Declaration of Conflicting Interests

The author(s) declared no potential conflicts of interest with respect to the research, authorship, and/or publication of this article.

Funding

The author(s) disclosed receipt of the following financial support for the research, authorship, and/or publication of this article: This study is part of Hypo-RESOLVE (Hypoglycemia—Redefining SOLUTIONs for better liVES) (<http://hypo-resolve.eu/>), a project currently ongoing (1.5.2018-30.4.2022) which has received funding from the Innovative Medicines Initiative 2 Joint Undertaking (JU) under grant agreement No 777460. The JU receives support from the European Union Horizon 2020 research and innovation programme and EFPIA and T1D Exchange, JDRF, International Diabetes Federation (IDF), The Leona M. and Harry B. Helmsley Charitable Trust.

ORCID iDs

Chiara Roversi  <https://orcid.org/0000-0001-5320-1082>

Simone Del Favero  <https://orcid.org/0000-0002-8214-2752>

Giovanni Sparacino  <https://orcid.org/0000-0002-3248-1393>

References

1. DeWitt DE, Hirsch IB. Outpatient insulin therapy in type 1 and type 2 diabetes mellitus: scientific review. *JAMA*. 2003;289(17):2254-2264.
2. Evert AB, Boucher JL, Cypress M, et al. Nutrition therapy recommendations for the management of adults with diabetes. *Diabetes Care*. 2013;37(suppl 1):S120-S143.
3. Laurenzi A, Bolla AM, Panigoni G, et al. Effects of carbohydrate counting on glucose control and quality of life over 24 weeks in adult patients with type 1 diabetes on continuous subcutaneous insulin infusion: a randomized, prospective clinical trial (GIOCAR). *Diabetes Care*. 2011;34(4):823-827.
4. Scavone G, Manto A, Pitocco D, et al. Effect of carbohydrate counting and medical nutritional therapy on glycaemic control in type 1 diabetic subjects: a pilot study. *Diabet Med*. 2010;27(4):477-479.
5. Mehta SN, Quinn N, Volkening LK, Laffel LMB. Impact of carbohydrate counting on glycemic control in children with type 1 diabetes. *Diabetes Care*. 2009;32(6):1014-1016.
6. Schmidt S, Norgaard K. Bolus calculators. *J Diabetes Sci Technol*. 2014;8(5):1035-1041.
7. Bishop FK, Maahs DM, Spiegel G, et al. The carbohydrate counting in adolescents with type 1 diabetes (CCAT) study. *Diabetes Spectr*. 2009;22(1):56-62.

8. Meade LT, Rushton WE. Accuracy of carbohydrate counting in adults. *Clin Diabetes*. 2016;34(3):142-147.
9. Brazeau AS, Mircescu H, Desjardins K, et al. Carbohydrate counting accuracy and blood glucose variability in adults with type 1 diabetes. *Diabetes Res Clin Pract*. 2013;99(1):19-23.
10. Smart CE, Ross K, Edge JA, King BR, McElduff P, Collins CE. Can children with type 1 diabetes and their caregivers estimate the carbohydrate content of meals and snacks? *Diabet Med*. 2010;27(3):348-353.
11. Kawamura T, Takamura C, Hirose M, et al. The factors affecting on estimation of carbohydrate content of meals in carbohydrate counting. *Clin Pediatr Endocrinol*. 2015;24(4):153-165.
12. Roversi C, Vettoretti M, Del Favero S, Facchinetti A, Sparacino G. Modeling carbohydrate counting error in type 1 diabetes management. *Diabetes Technol Ther*. 2020;22(10):749-759.
13. Vasiloglou MF, Mougiakakou S, Aubry E, et al. A comparative study on carbohydrate estimation: GoCARB vs. dietitians. *Nutrients*. 2018;10(6):741.
14. Rhyner D, Loher H, Dehais J, et al. Carbohydrate estimation by a mobile phone-based system versus self-estimations of individuals with type 1 diabetes mellitus: a comparative study. *J Med Internet Res*. 2016;18(5):e101.
15. Domhardt M, Tiefengrabner M, Dinic R, et al. Training of carbohydrate estimation for people with diabetes using mobile augmented reality. *J Diabetes Sci Technol*. 2015;9(3):516-524.
16. Deeb A, Al Hajeri A, Alhmodi I, Nagelkerke N. Accurate carbohydrate counting is an important determinant of postprandial glycemia in children and adolescents with type 1 diabetes on insulin pump therapy. *J Diabetes Sci Technol*. 2017;11(4):753-758.
17. Sun Q, Jankovic MV, Mougiakakou SG. Impact of errors in carbohydrate estimation on control of blood glucose in type 1 diabetes. In: *14th Symposium on Neural Networks and Applications, NEUREL, Belgrade, Serbia, 20-21 November*. 2018:1-5.
18. Viridi NS, Mahoney JJ. Importance of blood glucose meter and carbohydrate estimation accuracy. *J Diabetes Sci Technol*. 2012;6(4):921-926.
19. Reiterer F, Freckmann G. Advanced carbohydrate counting: an engineering perspective. *Annu Rev Control*. 2019;48:401-422.
20. Abreu C, Miranda F, Felgueiras P. Carbohydrate counting: how accurate should it be to achieve glycemic control in patients on intensive insulin regimens? *AIP Conf Proc*. 2019;2116(1):250010.
21. Smart CE, Ross K, Edge JA, Collins CE, Colyvas K, King BR. Children and adolescents on intensive insulin therapy maintain postprandial glycaemic control without precise carbohydrate counting. *Diabet Med*. 2009;26(3):279-285.
22. Smart CE, King BR, McElduff P, Collins CE. In children using intensive insulin therapy, a 20-g variation in carbohydrate amount significantly impacts on postprandial glycaemia. *Diabet Med*. 2012;29(7):e21-e24.
23. Knebel T, Neumiller JJ. Medtronic minimed 670G hybrid closed-loop system. *Clin Diabetes*. 2019;37(1):94-95.
24. Visentin R, Campos-Náñez E, Schiavon M, et al. The UVA/padova type 1 diabetes simulator goes from single meal to single day. *J Diabetes Sci Technol*. 2018;12(2):273-281.
25. Dalla Man C, Micheletto F, Lv D, Breton M, Kovatchev B, Cobelli C. The UVA/PADOVA type 1 diabetes simulator: new features. *J Diabetes Sci Technol*. 2014;8(1):26-34.
26. Vettoretti M, Facchinetti A, Sparacino G, Cobelli C. Type-1 diabetes patient decision simulator for in silico testing safety and effectiveness of insulin treatments. *IEEE Trans Biomed Eng*. 2018;65(6):1281-1290.
27. Battelino T, Danne T, Bergenstal RM, et al. Clinical targets for continuous glucose monitoring data interpretation: recommendations from the international consensus on time in range. *Diabetes Care*. 2019;42(8):1593-1603.