

ORIGINAL ARTICLE

Reconstructive surgical therapy of peri-implantitis: A multicenter randomized controlled clinical trial

Jan Derks^{1,2} | Alberto Ortiz-Vigón^{3,4} | Adrián Guerrero⁵ | Mauro Donati¹ |
 Eriberto Bressan⁶ | Paolo Ghensi⁷ | Dennis Schaller⁸ | Cristiano Tomasi¹ |
 Karolina Karlsson^{1,2} | Ingemar Abrahamsson^{1,2} | Yuki Ichioka¹ |
 Carlotta Dionigi¹ | Erik Regidor³ | Tord Berglundh^{1,2}

¹Department of Periodontology, Institute of Odontology, The Sahlgrenska Academy at University of Gothenburg, Gothenburg, Sweden

²Clinic of Periodontics, Public Dental Service, Region Västra Götaland, Gothenburg, Sweden

³Clínica Ortiz-Vigón, PerioCentrum, Bilbao, Spain

⁴ETEP Research Group, Faculty of Odontology, University Complutense of Madrid, Madrid, Spain

⁵Private practice, Clinica Guerrero, Marbella, Spain

⁶Department of Neuroscience, Faculty of Odontology, University of Padua, Padua, Italy

⁷Department CIBIO, University of Trento, Trento, Italy

⁸Private practice, Planegg, Germany

Correspondence

Jan Derks, Department of Periodontology, Institute of Odontology, The Sahlgrenska Academy at University of Gothenburg, Box 450, SE 405 30 Gothenburg, Sweden.
 Email: jan.derks@odontologi.gu.se

Funding information

Osteology Foundation, Grant/Award Number: 15-013

Abstract

Objective: To evaluate the potential benefit of the use of a bone substitute material in the reconstructive surgical therapy of peri-implantitis.

Methods: In this multicenter randomized clinical trial, 138 patients (147 implants) with peri-implantitis were treated surgically, randomized by coin toss to either a control (access flap surgery) or a test group (reconstructive surgery using bone substitute material). Clinical assessments, including probing pocket depth (PPD), bleeding and suppuration on probing (BOP & SOP) as well as soft tissue recession (REC), were recorded at baseline, 6 and 12 months. Marginal bone levels (MBL), measured on intra-oral radiographs, and patient-reported outcomes (PROs) were recorded at baseline and 12 months. No blinding to group allocation was performed. The primary outcome at 12 months was a composite measure including (i) implant not lost, (ii) absence of BOP/SOP at all aspects, (iii) PPD ≤ 5 mm at all aspects and (iv) ≤ 1 mm recession of mucosal margin on the buccal aspect of the implant. Secondary outcomes included (i) changes of MBL, (ii) changes of PPD, BOP%, and buccal KM, (iii) buccal REC and (iv) patient-reported outcomes.

Results: During follow-up, four implants (one in the test group, three in the control group) in four patients were removed due to disease progression. At 12 months, a total of 69 implants in the test and 68 implants in the control group were examined. Thus, 16.4% and 13.5% of implants in the test and control group, respectively, met all predefined criteria of the composite outcome. PPD reduction and MBL gain were 3.7 mm and about 1.0 mm in both groups. Reduction in mean BOP% varied between 45% (test) and 50% (control), without significant differences between groups. Buccal REC was less pronounced in the test group ($M = 0.7$, $SD = 0.9$ mm) when compared to controls ($M = 1.1$, $SD = 1.5$ mm). PROs were favorable in both groups without significant differences. One case of allergic reaction to the antibiotic therapy was recorded. No other adverse events were noted.

This is an open access article under the terms of the [Creative Commons Attribution-NonCommercial](https://creativecommons.org/licenses/by-nc/4.0/) License, which permits use, distribution and reproduction in any medium, provided the original work is properly cited and is not used for commercial purposes.

© 2022 The Authors. *Clinical Oral Implants Research* published by John Wiley & Sons Ltd.

Conclusions: Surgical therapy of peri-implantitis effectively improved the clinical and radiographic status at 12 months. While the use of a bone substitute material did not improve reductions of PPD and BOP, buccal REC was less pronounced in the test group. Patient satisfaction was high in both groups.

KEYWORDS

bone graft, dental implant, peri-implantitis, reconstructive therapy, surgical therapy

1 | INTRODUCTION

Peri-implantitis is characterized by bleeding/suppuration on probing together with loss of supporting bone and affects about 15% of implant-carrying patients (Derks et al., 2016). The primary goal of the treatment of peri-implantitis is to resolve the inflammatory lesion in peri-implant tissues, which was shown to be possible in preclinical *in vivo* experiments (Albouy et al., 2011; Carcuac et al., 2015). Successful management of peri-implantitis, as indicated by the reduction in bleeding on probing and/or absence of further bone loss, has also been demonstrated both in observational studies (e.g., Berglundh et al., 2018; Rocuzzo et al., 2017; Schwarz et al., 2017) and in randomized controlled trials (e.g., Carcuac et al., 2016; Carcuac et al., 2017; Hentenaar et al., 2022).

In addition to the resolution of the peri-implantitis lesion, a desirable outcome is the regeneration of supporting tissues lost during disease progression. The use of reconstructive procedures in the surgical treatment of periodontitis has been extensively evaluated (Nibali et al., 2020), and the technique is an established option for the management of angular defects around teeth (Sanz et al., 2020). A similar approach in the treatment of peri-implantitis-associated defects may be relevant not only for the longevity of the implant but also for the esthetic appearance post-therapy.

In a systematic review on reconstructive measures as part of surgical treatment of peri-implantitis, it was reported that evidence from controlled trials is limited (Tomasi et al., 2019). While no clinical benefits of reconstructive measures over access flap alone were observed, the use of bone substitute materials resulted in improved radiographic bone levels and defect fill (K. Jepsen et al., 2016; Wohlfahrt et al., 2012). Interpretation of such findings, however, is complex due to the difficulty in distinguishing graft material from newly formed bone on radiographs. In a consensus report from the 15th European Workshop on Periodontology on bone regeneration, the importance of including outcomes related to soft tissue dimensions and esthetics in studies on reconstructive techniques used at peri-implantitis-associated bony defects was highlighted (S. Jepsen et al., 2019). While some studies (Ished et al., 2016; Jepsen et al., 2016; Wohlfahrt et al., 2012) did not consider esthetic parameters in their clinical evaluations, two publications (Renvert et al., 2018; Renvert et al., 2021) found no differences in soft tissue recession between test and control groups. Furthermore, the degree of patient satisfaction was not dependent on treatment modality (Renvert et al., 2021).

Thus, the limited evidence, specifically in terms of soft tissue recession and patient-reported outcomes, calls for further investigation. The aim of the present randomized controlled trial was to

evaluate the potential benefit of the use of a bone substitute material in the reconstructive surgical therapy of peri-implantitis. Hence, the null hypothesis was the absence of any difference between access flap alone and access flap combined with a bone substitute material.

2 | MATERIALS AND METHODS

The study was designed as a multicenter, parallel group, randomized, controlled trial conducted at 6 centers located in Sweden, Italy, Spain, and Germany. The protocol was approved by the responsible authorities in the respective countries (Gothenburg: 1192-16; Bilbao: 06/2017; Málaga: 27/09/2017; Perugia: 3173/18; Trento: 21390; Munich: 17028) and registered at clinicaltrials.gov (NCT03077061). Interim analyses for efficacy/futility were carried out. No changes to the study protocol were performed after trial commencement. CONSORT guidelines were followed (Schulz et al., 2010).

2.1 | Study population

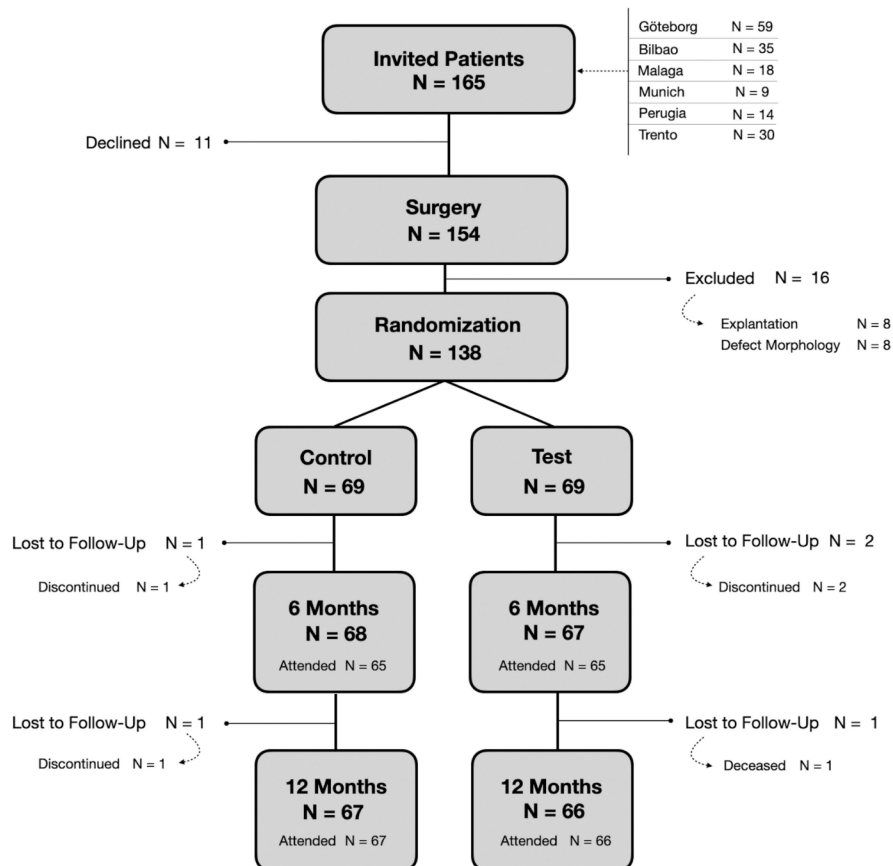
Eligible participants were subjects aged 18 years or over, presenting with peri-implantitis at ≥ 1 implant (≥ 1 year of function). Target sites presented with peri-implant probing pocket depth (PPD) of ≥ 7 mm, bleeding and/or suppuration on probing (BOP/SOP) and radiographically confirmed bone loss of ≥ 3 mm. For cases lacking reference radiographs, bone levels ≥ 3 mm were considered. Peri-implant osseous defects were circumferential and ≥ 3 mm deep, as confirmed during surgery. No minimum number of bony walls was required. Exclusion criteria were (i) surgical therapy of peri-implantitis and/or use of systemic/local antibiotics during the previous 6 months, (ii) untreated periodontitis, (iii) systemic conditions/medication affecting peri-implant tissues and/or impeding surgical intervention (e.g., uncontrolled diabetes, immunosuppressive medication).

In all, 165 subjects were invited and a total of 138, presenting with 147 target implants, were eventually included in the study (Figure 1). Patient and implant/site characteristics are illustrated in Table 1.

2.2 | Setting

The study took place at 6 clinical centers. All study-related procedures were performed by experienced clinicians with specialty degrees in periodontics (JD, AOV, AG, MD, DS, CT, KK, IA & TB), oral

FIGURE 1 Flow-chart illustrating the process of enrollment, treatment allocation and follow-up



surgery (PG), or orthodontics (EB). All clinicians met for discussion of the study protocol and calibration purposes at the primary study center (Gothenburg) prior to study initiation.

Patients meeting the inclusion criteria were invited on a consecutive basis. Upon signed consent, participants were enrolled and assigned a unique identification number. At the time of surgical intervention, subjects were randomly allocated to either the test or control group. In case of multiple implants per patient, all implants were allocated to the same group. Randomization sequence was determined by coin toss and was stratified by smoking with a 1:1 allocation using a block size of 4. Smokers were those subjects reporting daily tobacco smoking. Randomization lists were prepared at the primary study center and distributed together with clinical record forms. Allocation was concealed through the use of sealed, opaque envelopes. During follow-up, neither clinicians nor participants were blinded to group allocation. Surgical interventions were performed between July 2017 and February 2021.

2.3 | Interventions

Patients first received tailored, non-surgical peri-implantitis therapy including oral hygiene instructions, possible adjustments to implant-borne prostheses and instrumentation performed with titanium curettes and polishing cups. Once demonstrating adequate self-performed infection control (full-mouth plaque score $\leq 20\%$), patients underwent surgical therapy at peri-implantitis sites. A

10-day antibiotic regimen (Amoxicillin 2×750 mg daily) was initiated 3 days prior to surgery. When feasible, prostheses were disconnected. Following local anesthesia, full-thickness access flaps were carefully elevated and inflamed tissue was removed from the peri-implant defect(s). Implant surfaces were cleaned by titanium curettes and a rotating titanium brush (Nano NiTi Brush, HANS KOREA CO. Ltd) used at ≤ 1200 rpm under continuous irrigation with saline. Upon surface decontamination, allocation to test or control was revealed. In controls, flaps were simply replaced at their initial position and sutured. At test sites, peri-implant bony defects were filled with a bone substitute material (Bio-Oss Collagen®, Geistlich, Lucerne, Switzerland) to the level of the bone crest prior to suturing. In both groups, the aim was to achieve primary closure through careful adaptation of tissue margins (Figure 2). Prostheses were reconnected and patients were advised to abstain from mechanical plaque control measures and rinse with a 0.2% solution of chlorhexidine digluconate until suture removal at 2 weeks. For additional details on the surgical procedures, see Table A1. Follow-up visits including oral hygiene reinforcement and polishing by rubber cup (targeting the whole dentition) were scheduled at 6 weeks and at 6 and 12 months (Figure A1).

2.4 | Clinical examination

Clinical assessments were carried out at baseline (prior to surgery) and at 6 and 12 months. Assessments included measurements of PPD,

TABLE 1 Patient and implant/site characteristics at baseline by group

	Test			Control			Total		
	n	%/mean (SD)	Min to max	n	%/mean (SD)	Min to max	n	%/mean (SD)	Min to max
Gender	Female	41	59.4%		47	68.1%	88	63.8%	
	Male	28	40.6%		22	31.9%	50	36.2%	
Current smoker (self-reported)	No	53	76.8%	34 to 88	48	69.6%	101	73.2%	24 to 79
	Yes	16	23.2%	2 to 22	21	30.4%	37	26.8%	1 to 30
History of periodontitis	No	23	33.3%	1 to 2	24	34.8%	47	34.1%	1 to 2
	Yes	46	66.7%	34 to 88	45	65.2%	91	65.9%	24 to 88
Diabetes	No	67	97.1%	34 to 88	66	95.7%	133	96.4%	24 to 79
	Yes	2	2.9%	2 to 22	3	4.3%	5	3.6%	1 to 30
Age at surgery (years)	69	62.4 (11.3)	34 to 88	69	59.3 (11.5)	24 to 79	138	60.8 (11.5)	24 to 88
Implant years	68	10.1 (5.1)	2 to 22	68	10.5 (5.8)	1 to 30	136	10.3 (5.5)	1 to 30
Number of implants included per patient	69	1.1 (0.2)	1 to 2	69	1.1 (0.3)	1 to 2	138	1.1 (0.2)	1 to 2 ^a
Jaw	Maxilla	36		34 to 88	33	44.6%	69	46.9%	24 to 79
	Mandible	37		2 to 22	41	55.4%	78	53.1%	1 to 30
Location	Anterior (canine to canine)	15		1 to 2	14	18.9%	29	19.7%	1 to 2
	Posterior	58	49.3%	34 to 88	60	81.1%	118	80.3%	24 to 79
Implant brand	Nobel Biocare	10	50.7%	34 to 88	16	21.6%	26	17.7%	24 to 79
	Astra Tech	35	20.5%	2 to 22	28	37.8%	63	42.9%	1 to 30
	Straumann	14	79.5%	1 to 2	17	23.0%	31	21.1%	1 to 2
	Other	9	13.7%	1 to 2	9	12.2%	18	12.2%	1 to 2
Surface characteristics	Unclear	5	47.9%	1 to 2	4	5.4%	9	6.1%	1 to 2
	Modified	72	19.2%	34 to 88	71	95.9%	143	97.3%	24 to 79
Retention	Nonmodified	1	12.3%	25.0 to 100.0	3	4.1%	4	2.7%	25.0 to 100.0
	Cemented	31	6.8%	7.0 to 13.0	32	43.2%	63	42.9%	7.0 to 13.0
	Conometric	1	98.6%	25.0 to 100.0	4	5.4%	5	3.4%	25.0 to 100.0
	Screw-retained	41	1.4%	25.0 to 100.0	38	51.4%	79	53.7%	25.0 to 100.0
PPD (mm)	73	42.5%	7.0 to 13.0	74	8.5 (1.6)	147	8.6 (1.6)	7.0 to 13.0	
BOP (%)	73	1.4%	25.0 to 100.0	74	91.9 (19.5)	147	90.0 (20.8)	25.0 to 100.0	
SOP (%)	73	56.2%	0.0 to 100.0	74	31.1 (38.3)	147	34.9 (40.4)	0.0 to 100.0	
Plaque (%)	73	20.2 (37.0)	0.0 to 100.0	74	17.2 (29.5)	147	18.7 (33.3)	0.0 to 100.0	

TABLE 1 (Continued)

	Test			Control			Total		
	n	%/mean (SD)	Min to max	n	%/mean (SD)	Min to max	n	%/mean (SD)	Min to max
Buccal soft tissue level (mm)	73	0.4 (1.4)	-3.0 to 5.0	74	0.5 (1.3)	-2.0 to 6.0	147	0.5 (1.3)	-3.0 to 6.0
Buccal KM (mm)	73	2.3 (1.8)	0.0 to 6.0	74	2.3 (1.9)	0.0 to 7.0	147	2.3 (1.8)	0.0 to 6.0
MBL (mm)	73	5.9 (1.9)	2.3 to 10.2	74	6.2 (2.0)	2.7 to 12.9	147	6.1 (2.0)	2.3 to 12.9

Note: N = 138 patients; n = 147 implants/sites.

Abbreviations: BOP, bleeding on probing; KM, keratinized mucosa; MBL, marginal bone level; PPD, probing pocket depth (deepest site); SD, standard deviation; SOP, suppuration on probing.
^aNine patients contributed with two implants.

BOP, SOP, soft tissue levels and presence of plaque at 4 aspects per implant using a metal periodontal probe. The width of keratinized mucosa (KM) and the distance between the mucosal margin and a reference landmark (the shoulder of the implant or the prosthetic margin) were evaluated on the buccal aspect. PPD, soft tissue levels and KM were recorded to the nearest millimeter, while BOP, SOP (within 15 s following probing) and plaque were scored dichotomously (yes/no). Clinical examinations were performed with prostheses in place and intraoral photographs were obtained at baseline and follow-up visits.

During surgery, dimensions of the peri-implant bony defect(s) were measured by probe. Thus, defect depth (bony crest to the bottom of defect) and width as well as bone levels relative to implant shoulder were evaluated at four aspects per implant. Defects were categorized according to (i) defect geometry and (ii) presence/absence of the buccal bony wall (Table A2).

2.5 | Radiographic examination

Intra- radiographic images were obtained by long-cone parallel technique prior to surgery (≤ 4 weeks) and at 12 months. Marginal bone levels (MBL) were assessed by two trained and blinded investigators (JD & YI) using an image analysis software (ImageJ 2.0.0-rc-69/1.52n; National Institutes of Health). Pictures were calibrated either by the known inter-thread distance or the implant length/diameter. MBLs were measured on the mesial and distal aspect relative to a fixed landmark and expressed in mm (Figure A2).

For 34 implant sites, MBL assessments were repeated. The absolute difference between two assessments was used to express the measurement error. Intra- and inter-rater comparisons revealed mean measurement errors of 0.33 ± 0.37 mm (\pm : standard deviation) and 0.49 ± 0.46 mm. A two-way mixed-effect model with consistency agreement reported intraclass correlation coefficients of 0.97 (95% CI 0.96/0.98; CI: confidence interval) and 0.95 (95% CI 0.92/0.97), respectively.

2.6 | Patient-reported outcomes

Participants completed a written questionnaire prior to surgery, at 2 weeks and at 12 months. Responses were scored on a visual analog scale (VAS, 100 mm, Figure A3). Questions were translated into respective languages. Adverse events were recorded. In addition to an overall comparison by group allocation, we performed a sub-analysis of satisfaction at 12 months considering only subjects treated at implant sites located in the esthetic zone (second premolar to second premolar in the maxilla).

2.7 | Data analysis

According to an *a priori* power calculation, a total of 122 patients (61 per group) were required to detect (power 0.8; alpha 0.05) a



FIGURE 2 Images illustrating interventions by group allocation

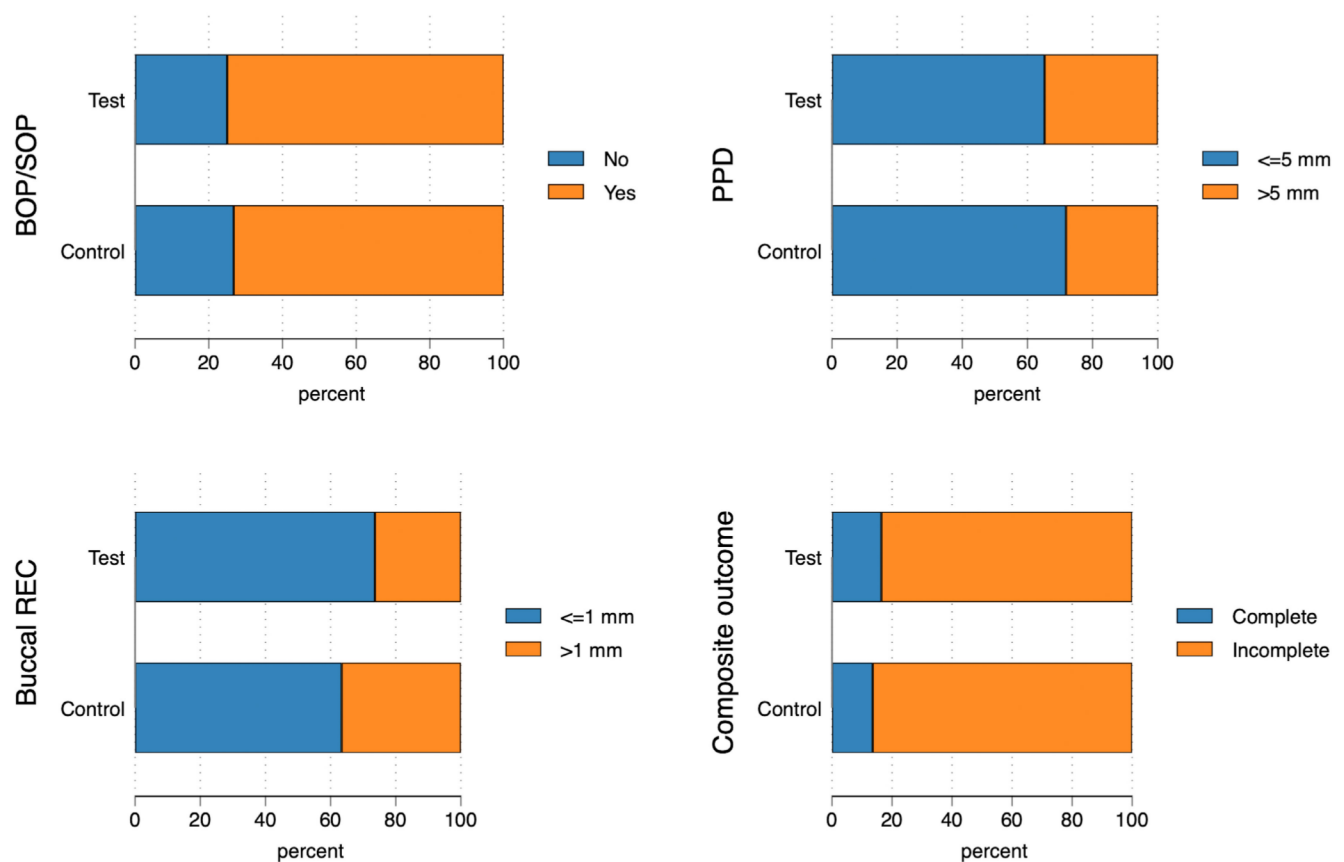


FIGURE 3 Threshold and composite outcomes at 12 months. $N = 147$ implants, the four implants lost due to disease progression are considered. Composite outcome defined as implant not lost, no bleeding on probing (BOP), no suppuration on probing (SOP), probing pocket depth (PPD) ≤ 5 mm and buccal recession (REC) ≤ 1 mm. For further details, see [Table A3](#).

difference of 1 mm in PPD change between groups, considering a standard deviation of 1.97 (Carcuac et al., 2016). To compensate for possible drop-out, the enrollment of 140 study participants was planned. At the time of study planning, no relevant data on composite outcomes were available for appropriate power analysis.

The unit of analysis for clinical and radiographic evaluations was the implant. For MBL and PPD, the deepest measurement at each evaluation point was chosen, while for soft tissue level and KM, the buccal aspect was representative of the implant. For BOP and SOP, the percentage of positive aspects (out of four sites) per implant was calculated.

TABLE 2 Continuous outcomes at 12 months by group (intention to treat)

	Test			Control			Total		
	n	Mean (SD)	Min to max	n	Mean (SD)	Min to max	n	Mean (SD)	Min to max
PPD Change (mm)	72	-3.7 (2.1)	-8.0 to 3.0	71	-3.7 (2.3)	-9.0 to 6.0	143	-3.7 (2.2)	-9.0 to 6.0
BOP% Change	72	-44.8 (36.6)	-100.0 to 50.0	71	-49.6 (41.1)	-100.0 to 75.0	143	-47.2 (38.8)	-100.0 to 75.0
Buccal REC (mm)	72	0.7 (0.9)	-1.0 to 3.0	71	1.1 (1.5)	-3.0 to 7.0	143	0.9 (1.2)	-3.0 to 7.0
Buccal KM Change (mm)	72	-0.1 (1.3)	-5.0 to 4.0	71	-0.5 (1.1)	-4.0 to 3.0	143	-0.3 (1.2)	-5.0 to 4.0
MBL Change (mm)	72	1.1 (1.4)	-4.4 to 5.2	71	1.1 (1.0)	-2.3 to 3.9	143	1.1 (1.2)	-4.4 to 5.2
Plaque (%) – per protocol	69	20.3 (33.8)	0.0 to 100.0	68	19.9 (31.6)	0.0 to 100.0	137	20.1 (32.6)	0.0 to 100.0

Note: N = 143 implants. The four implants lost due to disease progression are not considered. For statistical testing, see Table A5.

Abbreviations: BOP, bleeding on probing; KM, keratinized mucosa; MBL, marginal bone level; PPD, probing pocket depth; REC, recession; SD, standard deviation.

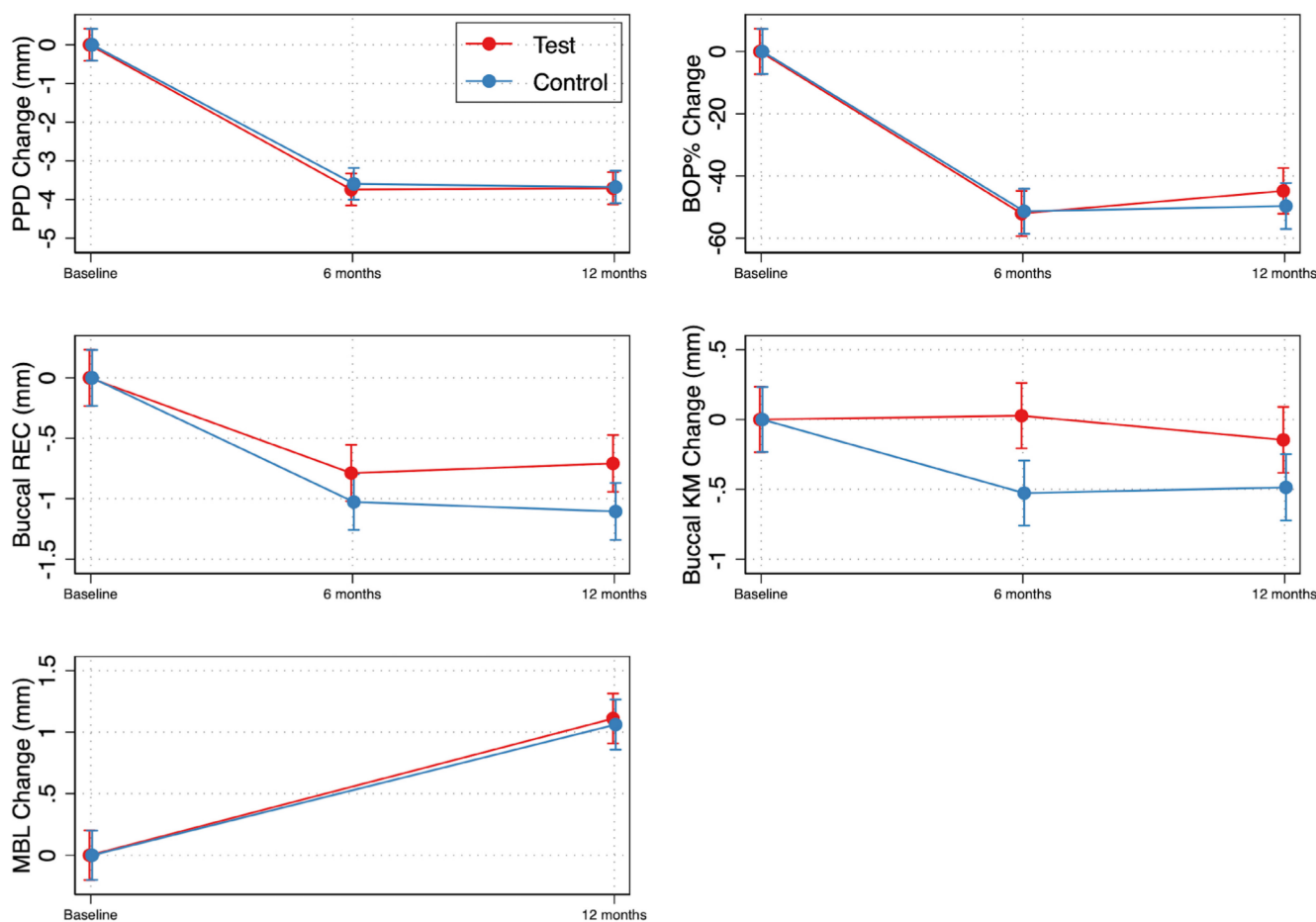


FIGURE 4 Changes of probing pocket depth (PPD), bleeding on probing% (BOP%), buccal keratinized mucosa (KM), marginal bone level (MBL) and buccal recession (REC) following the surgical intervention. N = 143 implants, the 4 implants lost due to disease progression are not considered. Results are based on regressions analyses also illustrated in Table A5. Whiskers indicate 95% CIs.

The primary outcome at 12 months was a composite measure including all of the following features: (i) implant not lost, (ii) absence of BOP/SOP at all aspects, (iii) PPD \leq 5 mm at all aspects and (iv) \leq 1 mm recession of mucosal margin on the buccal aspect (buccal REC) of the implant. Secondary outcomes included (i) changes (i.e., from baseline to 12 months) of MBL, (ii) changes of PPD, BOP%, buccal KM, (iii) buccal REC and (iv) patient-reported outcomes.

We used logistic (for the primary outcome) and linear regression analyses to assess differences between test and control groups. Results of the logistic regression were expressed as odds ratio (OR). For continuous data, group allocation and time points (baseline, 6 and 12 months) were entered as main effects and interaction terms to the respective models (STATA 17.0, StataCorp). We predicted outcomes including 95% CIs and analyzed potential differences through

pairwise comparisons (α : 0.05). We used Bonferroni correction for multiple comparisons. To address the potential clustering effect of multiple implants within patients, we confirmed initial estimates through multilevel modeling.

Analyses were performed according to the intention-to-treat principle. In case of missing data, the last available observation was carried forward under the assumption of “missing completely at random.” An evaluation of missingness was performed. Patient-reported outcomes demonstrated skewed distributions and were analyzed per-protocol using the Mann–Whitney U test. Finally, the potential effect of center on the composite outcome and on changes of PPD and MBL was evaluated by adding “Center” as an independent parameter to both the logistic and the respective linear regression analyses.

3 | RESULTS

Out of the initially included 138 participants (147 implants), five subjects (six implants) were lost to follow-up prior to the 12-month evaluation (Figure 1). A total of four implants (one in the test group, three in the control group) in four patients were removed prior to the final examination due to continuous loss of MBL. One case of allergic reaction to the antibiotic therapy was recorded. No other adverse events related to any study intervention were noted.

At 12 months, the different components of the composite outcome were met at varying degrees. In all, the majority of implants presented with shallow PPD (≤ 5 mm; 68.5%) and minor buccal REC (≤ 1 mm; 68.5%). In contrast, the complete absence of BOP/SOP was achieved only for a minority of implants (25.9%). Accordingly, a composite outcome for all predefined criteria (implant not lost, absence of BOP/SOP, PPD ≤ 5 mm and buccal REC ≤ 1 mm) was noted for 16.4% and 13.5% of implants in the test and control group, respectively (Figure 3 & Table A3). Differences between groups were not statistically significant (OR 0.79; 95% CI 0.32/1.97; $p = .62$; Table A4). PPD reduction and MBL gain were 3.7 mm and about 1.0 mm in both groups. The reduction in mean BOP% varied between 45% and 50%. No statistically significant differences between groups were observed. Test implants demonstrated less buccal REC (mean difference: 0.40 mm, 95% CI 0.06/0.73; $p = .02$) and less buccal KM change (mean difference: 0.34 mm, 95% CI 0.01/0.67; $p = .05$) than controls (Table 2, Figure 4, Table A5 and Figure A4).

Pronounced MBL gain of >2 mm was noted at 22.2% of test and at 18.3% of control implants. In all, 3 implants (2.1%), in addition to the four implants that were removed, demonstrated MBL loss >1 mm between surgery and the 12-month evaluation (Table A3).

Responses to the questionnaires were not normally distributed (Figure 5 & Table A6).

At 12 months, the overall satisfaction with treatment outcomes (median and interquartile range) was rated at 97.5 (20.0) and 91.5 (20.0) in the test and control groups, respectively. Corresponding satisfaction with the esthetic outcome was 95.0 (24.0) and 95.0 (30.0). Postsurgical pain at 2 weeks was scored as 10.0 (20.0) and

10.0 (21.0). Differences between test and control groups were not statistically significant.

Clinical and radiographic outcomes at the 51 implants located in the esthetic zone revealed no statistically significant differences when compared to other sites (Table A7). In addition, differences between treatment groups in terms of buccal REC in the esthetic zone were consistent with overall findings (Table A8). No statistically significant differences in patient satisfaction were observed (Figure A5). No association between the degree of “satisfaction with therapy” and “satisfaction with esthetic outcome” and buccal REC was found (Figure A6).

The analysis of a potential center effect revealed no statistically significant differences in terms of composite outcome and PPD change between centers. Differences in MBL change by center were observed (Figure A7 & Tables A9–A12).

Details of the number of missing values (nonattendance) by time point are illustrated in Table A13.

4 | DISCUSSION

In the present study, the potential benefit of the use of a bone substitute material in the reconstructive surgical therapy of peri-implantitis was evaluated. Treatment resulted in pronounced improvements at 12 months as illustrated by reductions of PPD and BOP as well as by marginal bone level gain. For these parameters, no differences between groups were observed. Complete absence of BOP/SOP was observed at about 25% of implants, which limited the proportion of implants matching all predefined criteria for the composite outcome, irrespective of treatment group. Buccal soft tissue recession, however, was less pronounced in the test group when compared to controls. Patient-reported outcomes were favorable in both groups without significant differences.

The results of the present study provide relevant information on the management of peri-implantitis-associated osseous defects. The currently available evidence in the field is limited not only due to the small number of controlled studies but also due to the heterogeneity in the choice of reconstructive technique. Thus, Wohlfahrt et al. (2012) and Jepsen et al. (2016) used a bone substitute material consisting of titanium granules, while Renvert et al. (2021; 2018) filled the bony defects at test sites with a xenograft. Ished et al. (2016, 2018), on the other hand, applied a biological agent. Irrespective of technique, no differences in reduction of PPD or BOP scores were observed between test and control groups. Although this observation is in agreement with our results, the overall magnitude of PPD reduction in the present study was greater than in the aforementioned studies. This difference may be explained by the severity of peri-implantitis in the presently included patient sample, illustrated by a PPD of 8.6 mm and an osseous defect depth of 6.0 mm prior to therapy. This explanation is supported by data presented by Tapia et al. (2019), who reported a similarly marked PPD reduction following reconstructive surgical therapy of peri-implantitis at sites with a pre-surgical PPD of 8.5 mm.

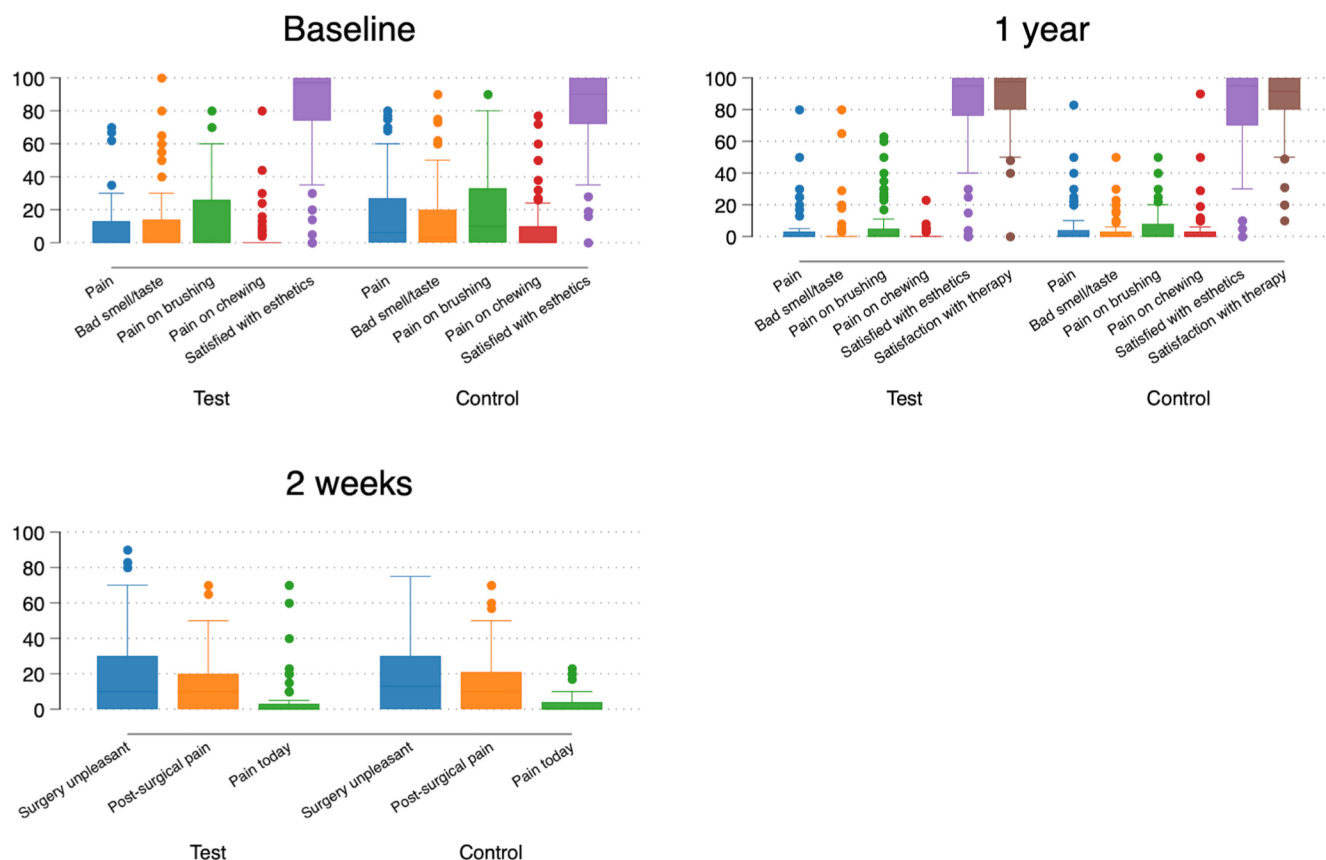


FIGURE 5 Patient-reported outcomes at baseline, at 2 weeks and at 12 months by group. Outcomes were scored on a VAS (100 mm). More details are reported in [Table A6](#).

While the lack of differences in reduction of PPD and BOP scores between test and control sites in the current trial was consistent with findings from previous controlled studies, our data on MBL changes were more ambiguous. The MBL improvement at 12 months was about 1 mm in both groups, which corresponds well with previously described observations at control sites but not with data reported from test sites. Thus, Jepsen et al. (2016) and Renvert et al. (2021) reported an MBL improvement at test sites varying between 2.7 and 3.5 mm, while corresponding data for control sites were 0.9–1.4 mm. The reasons for the different results on MBL changes at test sites are not fully understood but may be related to variations in choice of reconstructive techniques/materials and in morphology of the peri-implantitis-associated bony defects. As already pointed out, difficulties in distinguishing a bone filler material from newly formed bone may influence the interpretation of bone levels on radiographs. In addition, peri-implant osseous defects may present with configurations ranging from fully contained to “open,” i.e., absence of buccal and lingual bony walls. In the present study, the inclusion criteria allowed for cases with peri-implant defects lacking buccal and/or lingual bone walls. In fact, almost 40% of all defects were classified as “open.” This figure may be considered as high, as the corresponding proportion in an observational study on reconstructive surgical therapy of peri-implantitis was 18% (Roccuzzo et al., 2016). In the study by Renvert et al. (2021), 62% of sites had a fully contained

defect configuration, whereas similar conditions in the present study were identified in 24% of cases.

Although a substantial reduction in BOP was observed after treatment in the present study, a complete resolution of inflammation, as indicated by the complete absence of BOP, was not achieved. This finding is not unique for the current investigation. Indeed, previous studies on surgical treatment of peri-implantitis have reported persisting BOP at follow-up (Carcuac et al., 2016; Carcuac et al., 2017; Carcuac et al., 2020; Heitz-Mayfield et al., 2012; Heitz-Mayfield et al., 2018). Persisting BOP may be explained by the difficulties for patients to achieve proper access during home care coupled with the complex anatomy of exposed implant components following treatment. In the present study, residual BOP scores had a critical influence on the composite outcome. Difficulties in obtaining high composite outcome scores were also reported elsewhere (Carcuac et al., 2016; Jepsen et al., 2016).

There are limited data on the alterations of the soft tissue margin in previous controlled studies on reconstructive surgical therapy of peri-implantitis. While Renvert et al. (2021; 2018) did not observe differences in soft tissue recession between test and control sites, the results in the present study pointed to more favorable outcomes at test sites. The mean difference between groups was 0.4 mm and pronounced soft tissue recession of >1 mm occurred in a larger proportion of control than test sites (37% vs.

26%). Although the reason for the difference in soft tissue recession between groups is not fully understood, the potential influence of the graft material on the tissue volume in the bucco-lingual dimension after therapy should be considered. In this context, it should be pointed out, however, that the clinical relevance of this finding at 12 months may be limited, as patient satisfaction in terms of esthetic appearance after treatment was high, irrespective of allocation to test or control procedures. This general observation is in agreement with data presented by Renvert et al. (2021). We further confirmed the lack of association between patient satisfaction and soft tissue recession in our sub-analysis on implants in the esthetic zone.

The multicenter design and the large sample size are strengths of the present study. No critical center effects were observed. When interpreting the findings, the reader should also consider some limitations. The relevance of persisting, albeit reduced, BOP and PPD, and the importance of soft tissue recession on long-term outcomes and patient satisfaction require evaluations beyond the current time frame of 12 months. The lack of blinding of investigators and patients may have introduced a risk of bias. In addition, the power calculation was based on changes of PPD rather than our primary outcome, due to a lack of relevant data on composite outcomes at the time of study design. Further, evaluations of MBL after the use of bone substitute materials are challenging and may have influenced the accuracy of radiographic assessments. Results from a preclinical in vivo study, however, indicated that the identification of marginal bone levels on conventional radiographic images is a reliable method, also after reconstructive therapy of peri-implantitis (Almohandes et al., 2022).

5 | CONCLUSIONS

Surgical therapy of peri-implantitis effectively improved the clinical and radiographic status at 12 months. While the use of a bone substitute material did not improve reductions of PPD and BOP, buccal REC was less pronounced in the test group. Patient satisfaction was high in both groups.

AUTHOR CONTRIBUTIONS

JD and TB contributed to study conception and design. All authors contributed to data collection. ER, YI, and CD acted as study monitors and were responsible for data management. JD, CT, and TB contributed to data analysis and interpretation. All authors contributed to drafting and revision of the manuscript.

ACKNOWLEDGEMENT

The authors acknowledge Professor Max Petzold for his support during data analysis.

FUNDING INFORMATION

The project (15-013) was supported by a Large Clinical Grant from the Osteology Foundation, Switzerland.

CONFLICT OF INTEREST

Dr. Derks reports speakers honoraria from Osteology Foundation, Dentsply Sirona Implants, Straumann Group and received research grants from Eklund Foundation and Electro Medical Systems. Dr. Ortiz-Vigón reports speakers honoraria from Straumann Group and Arrow Development research and financial support from Thinking Perio research. Dr. Guerrero reports honoraria from Inibsa and Dentsply Sirona Implants. Dr. Donati reports speakers honoraria from Dentsply Sirona Implants and received research grants from Dentsply Sirona Implants. Dr. Bressan reports speakers honoraria from Dentsply Sirona Implants and Sweden & Martina. Dr. Ghensi reports speakers honoraria from Geistlich Pharma AG and BioHorizons Camlog. Dr. Schaller reports speakers honoraria from Zimmer Biomet. Dr. Tomasi reports speakers honoraria from Dentsply Sirona Implants, Straumann Group, Geistlich Pharma AG and Sweden & Martina. Dr. Karlsson reports speakers honoraria from Dentsply Sirona Implants. Dr. Abrahamsson received research grants from Dentsply Sirona Implants. Dr. Berglundh reports honoraria from Dentsply Sirona Implants, speakers honoraria from Osteology Foundation and received research grants from Dentsply Sirona Implants and Geistlich Pharma AG.

DATA AVAILABILITY STATEMENT

Data are available upon reasonable request made to the corresponding author.

ORCID

Jan Derks  <https://orcid.org/0000-0002-1133-6074>

Alberto Ortiz-Vigón  <https://orcid.org/0000-0002-1863-5907>

Adrián Guerrero  <https://orcid.org/0000-0003-2093-6079>

Mauro Donati  <https://orcid.org/0000-0002-6856-0237>

Paolo Ghensi  <https://orcid.org/0000-0002-8444-0489>

Cristiano Tomasi  <https://orcid.org/0000-0002-3610-6574>

Karolina Karlsson  <https://orcid.org/0000-0003-0922-2278>

Ingemar Abrahamsson  <https://orcid.org/0000-0002-0033-7856>

Yuki Ichioka  <https://orcid.org/0000-0003-0318-3167>

Carlotta Dionigi  <https://orcid.org/0000-0002-4195-0729>

Erik Regidor  <https://orcid.org/0000-0003-3338-6379>

Tord Berglundh  <https://orcid.org/0000-0001-5864-6398>

REFERENCES

- Albouy, J. P., Abrahamsson, I., Persson, L. G., & Berglundh, T. (2011). Implant surface characteristics influence the outcome of treatment of peri-implantitis: An experimental study in dogs. *Journal of Clinical Periodontology*, 38(1), 58–64. <https://doi.org/10.1111/j.1600-051X.2010.01631.x>
- Almohandes, A., Lund, H., Carcuac, O., Petzold, M., Berglundh, T., & Abrahamsson, I. (2022). Accuracy of bone-level assessments following reconstructive surgical treatment of experimental peri-implantitis. *Clinical Oral Implants Research*, 33, 433–440. <https://doi.org/10.1111/clr.13903>
- Berglundh, T., Wennström, J. L., & Lindhe, J. (2018). Long-term outcome of surgical treatment of peri-implantitis. A 2-11-year retrospective study. *Clinical Oral Implants Research*, 38(1), 58–57. <https://doi.org/10.1111/clr.13138>

- Carcuac, O., Abrahamsson, I., Charalampakis, G., & Berglundh, T. (2015). The effect of the local use of chlorhexidine in surgical treatment of experimental peri-implantitis in dogs. *Journal of Clinical Periodontology*, 42(2), 196–203. <https://doi.org/10.1111/jcpe.12332>
- Carcuac, O., Derks, J., Abrahamsson, I., Wennström, J. L., & Berglundh, T. (2020). Risk for recurrence of disease following surgical therapy of peri-implantitis—a prospective longitudinal study. *Clinical Oral Implants Research*, 31(11), 1072–1077. <https://doi.org/10.1111/clr.13653>
- Carcuac, O., Derks, J., Abrahamsson, I., Wennström, J. L., Petzold, M., & Berglundh, T. (2017). Surgical treatment of peri-implantitis: 3-year results from a randomized controlled clinical trial. *Journal of Clinical Periodontology*, 44(12), 1294–1303. <https://doi.org/10.1111/jcpe.12813>
- Carcuac, O., Derks, J., Charalampakis, G., Abrahamsson, I., Wennström, J., & Berglundh, T. (2016). Adjunctive systemic and local antimicrobial therapy in the surgical treatment of peri-implantitis. *Journal of Dental Research*, 95(1), 50–57. <https://doi.org/10.1177/0022034515601961>
- Derks, J., Schaller, D., Håkansson, J., Wennström, J. L., Tomasi, C., & Berglundh, T. (2016). Effectiveness of implant therapy analyzed in a Swedish population: Prevalence of peri-implantitis. *Journal of Dental Research*, 95(1), 43–49. <https://doi.org/10.1177/0022034515608832>
- Heitz-Mayfield, L. J. A., Salvi, G. E., Mombelli, A., Faddy, M., & Lang, N. P. (2012). Anti-infective surgical therapy of peri-implantitis. A 12-month prospective clinical study. *Clinical Oral Implants Research*, 23(2), 205–210. <https://doi.org/10.1111/j.1600-0501.2011.02276.x>
- Heitz-Mayfield, L. J. A., Salvi, G. E., Mombelli, A., Loup, P.-J., Heitz, F., Kruger, E., & Lang, N. P. (2018). Supportive peri-implant therapy following anti-infective surgical peri-implantitis treatment: 5-year survival and success. *Clinical Oral Implants Research*, 29(1), 1–6. <https://doi.org/10.1111/clr.12910>
- Hentenaar, D. F. M., Waal, Y. C. M. D., Stewart, R. E., Winkelhoff, A. J. V., Meijer, H. J. A., & Raghoobar, G. M. (2022). Erythritol air polishing in the surgical treatment of peri-implantitis: A randomized controlled trial. *Clinical Oral Implants Research*, 33(2), 184–196. <https://doi.org/10.1111/clr.13881>
- Ished, C., Holmlund, A., Renvert, S., Svenson, B., Johansson, I., & Lundberg, P. (2016). Effectiveness of enamel matrix derivative on the clinical and microbiological outcomes following surgical regenerative treatment of peri-implantitis. A randomized controlled trial. *Journal of Clinical Periodontology*, 43(10), 863–873. <https://doi.org/10.1111/jcpe.12583>
- Ished, C., Svenson, B., Lundberg, P., & Holmlund, A. (2018). Surgical treatment of peri-implantitis using enamel matrix derivative, an RCT: 3- and 5-year follow-up. *Journal of Clinical Periodontology*, 45(Suppl 16), 69–10. <https://doi.org/10.1111/jcpe.12894>
- Jepsen, K., Jepsen, S., Laine, M. L., Anssari Moin, D., Pilloni, A., Zeza, B., Sanz, M., Ortiz-Vigón, A., Roos-Jansåker, A. M., & Renvert, S. (2016). Reconstruction of peri-implant osseous defects: A multicenter randomized trial. *Journal of Dental Research*, 95(1), 58–66. <https://doi.org/10.1177/0022034515610056>
- Jepsen, S., Schwarz, F., Cordaro, L., Derks, J., Hämmerle, C. H., Heitz-Mayfield, L. J., Hernández-Alfaro, F., Meijer, H. J., Naenni, N., Ortiz-Vigón, A., & Pjetursson, B. (2019). Regeneration of alveolar ridge defects. Consensus report of group 4 of the 15th European workshop on periodontology on bone regeneration. *Journal of Clinical Periodontology*, 46, 277–286. <https://doi.org/10.1111/jcpe.13121>
- Nibali, L., Koidou, V. P., Nieri, M., Barbato, L., Pagliaro, U., & Cairo, F. (2020). Regenerative surgery versus access flap for the treatment of intra-bony periodontal defects: A systematic review and meta-analysis. *Journal of Clinical Periodontology*, 47(Suppl 22), 320–351. <https://doi.org/10.1111/jcpe.13237>
- Renvert, S., Giovannoli, J. L., Roos-Jansåker, A. M., & Rinke, S. (2021). Surgical treatment of peri-implantitis with or without a deproteinized bovine bone mineral and a native bilayer collagen membrane: A randomized clinical trial. *Journal of Clinical Periodontology*, 48(10), 1312–1321. <https://doi.org/10.1111/jcpe.13513>
- Renvert, S., Roos-Jansåker, A.-M., & Persson, G. R. (2018). Surgical treatment of peri-implantitis lesions with or without the use of a bone substitute—a randomized clinical trial. *Journal of Clinical Periodontology*, 45(10), 1266–1274. <https://doi.org/10.1111/jcpe.12986>
- Roccuzzo, M., Gaudio, L., Lungo, M., & Dalmaso, P. (2016). Surgical therapy of single peri-implantitis intrabony defects, by means of deproteinized bovine bone mineral with 10% collagen. *Journal of Clinical Periodontology*, 43(3), 311–318. <https://doi.org/10.1111/jcpe.12516>
- Roccuzzo, M., Pittoni, D., Roccuzzo, A., Charrier, L., & Dalmaso, P. (2017). Surgical treatment of peri-implantitis intrabony lesions by means of deproteinized bovine bone mineral with 10% collagen: 7-year-results. *Clinical Oral Implants Research*, 28(12), 1577–1583. <https://doi.org/10.1111/clr.13028>
- Sanz, M., Herrera, D., Kerschull, M., Chapple, I., Jepsen, S., Berglundh, T., Sculean, A., Tonetti, M. S., EFP Workshop Participants, & Methodological Consultants, Aass, A. M., & Aimetti, M. (2020). Treatment of stage I-III periodontitis—the EFP S3 level clinical practice guideline. *Journal of Clinical Periodontology*, 47(Suppl 22), 4–60. <https://doi.org/10.1111/jcpe.13290>
- Schulz, K. F., Altman, D. G., Moher, D., & Group, C. (2010). CONSORT 2010 statement: Updated guidelines for reporting parallel group randomised trials. *BMJ*, 340, c332. <https://doi.org/10.1136/bmj.c332>
- Schwarz, F., John, G., Schmucker, A., Sahm, N., & Becker, J. (2017). Combined surgical therapy of advanced peri-implantitis evaluating two methods of surface decontamination: A 7-year follow-up observation. *Journal of Clinical Periodontology*, 44(3), 337–342. <https://doi.org/10.1111/jcpe.12648>
- Tapia, B., Valles, C., Ribeiro-Amaral, T., Mor, C., Herrera, D., Sanz, M., & Nart, J. (2019). The adjunctive effect of a titanium brush in implant surface decontamination at peri-implantitis surgical regenerative interventions: A randomized controlled clinical trial. *Journal of Clinical Periodontology*, 46(5), 586–596. <https://doi.org/10.1111/jcpe.13095>
- Tomasi, C., Regidor, E., Ortiz-Vigón, A., & Derks, J. (2019). Efficacy of reconstructive surgical therapy at peri-implantitis-related bone defects. A systematic review and meta-analysis. *Journal of Clinical Periodontology*, 46, 340–356. <https://doi.org/10.1111/jcpe.13070>
- Wohlfahrt, J. C., Lyngstadaas, S. P., Rønold, H. J., Saxegaard, E., Ellingsen, J. E., Karlsson, S., & Aass, A. M. (2012). Porous titanium granules in the surgical treatment of peri-implant osseous defects: A randomized clinical trial. *International Journal of Oral & Maxillofacial Surgery*, 27(2), 401–410. <https://doi.org/10.1111/j.1600-0501.2009.01813.x>

How to cite this article: Derks, J., Ortiz-Vigón, A., Guerrero, A., Donati, M., Bressan, E., Ghensi, P., Schaller, D., Tomasi, C., Karlsson, K., Abrahamsson, I., Ichioka, Y., Dionigi, C., Regidor, E., & Berglundh, T. (2022). Reconstructive surgical therapy of peri-implantitis: A multicenter randomized controlled clinical trial. *Clinical Oral Implants Research*, 33, 921–944. <https://doi.org/10.1111/clr.13972>

APPENDIX A

TABLE A1 Details regarding surgical interventions by group. N = 138 patients

	Test			Control			Total		
	n	% mean (SD)	Min-max	n	% mean (SD)	Min-max	n	% Mean (SD)	Min-max
Prosthesis	Not removed	22	31.9%	21	30.4%		43	31.2%	
	Removed	47	68.1%	48	69.6%		95	68.8%	
Surgical access	Limited access	1	1.4%	1	1.4%		2	1.4%	
	Full access	68	98.6%	68	98.6%		136	98.6%	
Surgical assessment	Not fully satisfied	0	0%	0	0%		0	0%	
	Fully satisfied	69	100.0%	69	100.0%		138	100.0%	
Surgery duration (min)		69	53.0 (12.8)	69	49.6 (16.3)	25–105	138	51.3 (14.7)	10–145

TABLE A2 Characteristics of peri-implant defects assessed intrasurgically by group

		Test			Control			Total		
		n	% mean (SD)	Min-max	n	% mean (SD)	Min-max	n	% Mean (SD)	Min-max
Bone crest to bottom of defect (mm)		73	6.0 (1.9)	3–13	74	6.0 (2.1)	3–14	147	6.0 (2.0)	3–14
Implant shoulder to bottom of defect (mm)		73	6.7 (2.1)	3–14	74	6.7 (2.4)	3–15	147	6.7 (2.3)	3–15
Defect width (mm)		73	3.1 (1.0)	1–7	74	3.1 (1.0)	2–9	147	3.1 (1.0)	1–9
Defect configuration	Open ^a at buccal and lingual aspect	27	37.0%		30	40.5%		57	38.8%	
	Open ^a at either buccal or lingual aspect	32	43.8%		22	29.7%		54	36.7%	
	Contained	14	19.2%		22	29.7%		36	24.5%	
Buccal bone wall	Intact	36	49.3%		35	47.3%		71	48.3%	
	Partially missing ^b	20	27.4%		12	16.2%		32	21.8%	
	Missing ^b	17	23.3%		27	36.5%		44	29.9%	

Note: N = 147 implants.

^aDefect configuration: “Open” is defined as implant exposure >2 mm (Implant shoulder to bottom of defect - Crest to bottom of defect >2 mm).

^bBuccal bone wall: “Partially missing” is defined as buccal implant exposure >2 and ≤4 mm. “Missing” is defined as buccal implant exposure >4 mm.

TABLE A3 Threshold and composite outcomes at 12 months by group (intention to treat)

		Test		Control		Total	
		n	%	n	%	n	%
Implant loss	No	72	98.6%	71	95.9%	143	97.3%
	Yes	1	1.4%	3	4.1%	4	2.7%
BOP	No	18	25.0%	19	26.8%	37	25.9%
	Yes	54	75.0%	52	73.2%	106	74.1%
SOP	No	64	88.9%	62	87.3%	126	88.1%
	Yes	8	11.1%	9	12.7%	17	11.9%
PPD	≤5 mm	47	65.3%	51	71.8%	98	68.5%
	>5 mm	25	34.7%	20	28.2%	45	31.5%
Buccal REC	≤1 mm	53	73.6%	45	63.4%	98	68.5%
	>1 mm	19	26.4%	26	36.6%	45	31.5%
Composite outcome	Complete ^a	12	16.4%	10	13.5%	22	15.0%
	Incomplete	61	83.6%	64	86.5%	125	85.0%
MBL Change ≥0 mm	No	9	12.5%	7	9.9%	16	11.2%
	Yes	63	87.5%	64	90.1%	127	88.8%
MBL Gain >1 mm	No	36	50.0%	35	49.3%	71	49.7%
	Yes	36	50.0%	36	50.7%	72	50.3%
MBL Gain >2 mm	No	56	77.8%	58	81.7%	114	79.7%
	Yes	16	22.2%	13	18.3%	29	20.3%
MBL Loss >1 mm	No	71	98.6%	69	97.2%	140	97.9%
	Yes	1	1.4%	2	2.8%	3	2.1%

Note: N = 147 implants.

Abbreviations: BOP, bleeding on probing; KM, keratinized mucosa; MBL, marginal bone level; PPD, probing pocket depth; REC, recession; SOP, suppuration on probing.

^aComplete defined as implant not lost; no BOP, no SOP, PPD ≤5 mm and buccal REC ≤1 mm.

TABLE A4 Logistic regression: Composite outcome at 12 months (intention to treat)

	Odds ratio	95% Confidence interval	p-Value
Test	1	-	-
Control	0.79	0.32/1.97	.620
Intercept	0.30	0.11/0.37	<.001

Note: N = 147 implants.

TABLE A5 Results of the regression analysis: Continuous outcomes (intention to treat)

		Test		Control		p-Value
		Predicted value	95% Confidence interval	Predicted value	95% Confidence interval	
PPD Change (mm)	6 months	-3.74	-4.15/-3.33	-3.60	-4.01/-3.18	-
	12 months	-3.71	-4.13/-3.29	-3.68	-4.10/-3.26	.91
BOP% Change	6 months	-52.06	-59.34/-44.77	-51.35	-58.59/-44.11	-
	12 months	-44.79	-52.13/-37.45	-49.65	-57.04/-42.26	.36
MBL Change (mm)	12 months	1.11	0.91/1.31	1.06	0.86/1.27	.73
Buccal REC (mm)	6 months	0.79	0.56/1.02	1.03	0.80/1.26	-
	12 months	0.71	0.47/0.94	1.11	0.87/1.34	.02
Buccal KM Change (mm)	6 months	0.03	-0.21/0.26	-0.53	-0.76/-0.30	-
	12 months	-0.15	-0.39/0.09	-0.49	-0.72/-0.25	.05

Note: N = 143 implants. The four implants lost due to disease progression are not considered.

Abbreviations: BOP, bleeding on probing; KM, keratinized mucosa; MBL, marginal bone level; PPD, probing pocket depth; REC, recession.

TABLE A6 Patient-reported outcomes at baseline, 2 weeks, and 12 months by group (per protocol)

	Test										Control										Total									
	n	Med	IQR	Mean	SD	Min	Max	n	Med	IQR	Mean	SD	Min	Max	n	Med	IQR	Mean	SD	Min	Max									
Baseline	69	0.0	13.0	9.1	15.5	0	70	69	6.0	27.0	17.3	23.7	0	80	138	2.0	20.0	13.2	20.4	0	80									
	69	0.0	14.0	11.9	21.9	0	100	69	3.0	20.0	15.4	22.6	0	90	138	0.0	20.0	13.7	22.3	0	100									
	69	0.0	26.0	13.5	20.1	0	80	69	10.0	33.0	20.3	25.5	0	90	138	5.0	30.0	16.9	23.1	0	90									
	69	0.0	0.0	3.8	12.0	0	80	69	0.0	10.0	9.4	17.5	0	77	138	0.0	5.0	6.6	15.2	0	80									
	69	97.0	26.0	76.7	34.8	0	100	68	90.0	28.0	80.1	27.5	0	100	137	92.0	26.0	78.4	31.3	0	100									
1 year	65	0.0	3.0	4.6	12.9	0	80	65	0.0	4.0	6.0	14.2	0	83	130	0.0	3.0	5.3	13.5	0	83									
	65	0.0	0.0	4.1	13.5	0	80	65	0.0	3.0	3.5	8.4	0	50	130	0.0	2.0	3.8	11.2	0	80									
	65	0.0	5.0	7.5	15.0	0	63	65	0.0	8.0	6.0	11.0	0	50	130	0.0	7.0	6.7	13.1	0	63									
	64	0.0	0.0	1.0	3.3	0	23	65	0.0	3.0	4.3	13.3	0	90	129	0.0	0.0	2.7	9.8	0	90									
	63	95.0	24.0	79.1	31.5	0	100	65	95.0	30.0	79.8	29.6	0	100	128	95.0	28.5	79.5	30.4	0	100									
	64	97.5	20.0	87.3	19.5	0	100	64	91.5	20.0	85.0	21.9	10	100	128	95.0	20.0	86.2	20.7	0	100									
2 weeks	69	10.0	30.0	20.0	25.2	0	90	68	13.0	30.0	19.6	21.3	0	75	137	11.0	30.0	19.8	23.3	0	90									
	69	10.0	20.0	13.2	17.1	0	70	68	10.0	21.0	14.6	17.6	0	70	137	10.0	20.0	13.9	17.3	0	70									
	69	0.0	3.0	5.3	12.9	0	70	68	0.0	4.0	3.2	6.2	0	23	137	0.0	3.0	4.3	10.2	0	70									

Note: N = 138 patients. Results are graphically illustrated in Figure 5

TABLE A7 Clinical and radiographic outcomes at 12 months by location (intention to treat)

	Esthetic zone					Other					Total				
	n	Mean	SD	Min	Max	n	Mean	SD	Min	Max	n	Mean	SD	Min	Max
PPD Change (mm)	51	-3.9	(2.1)	-9.0	0.0	92	-3.6	(2.3)	-8.0	6.0	143	-3.7	(2.2)	-9.0	6.0
BOP% Change	51	-51.0	(36.4)	-100.0	50.0	92	-45.1	(40.1)	-100.0	75.0	143	-47.2	(38.8)	-100.0	75.0
Buccal REC (mm)	51	1.0	(1.0)	-1.0	4.0	92	0.9	(1.4)	-3.0	7.0	143	0.9	(1.2)	-3.0	7.0
Buccal KM Change (mm)	51	-0.4	(1.1)	-2.0	3.0	92	-0.3	(1.3)	-5.0	4.0	143	-0.3	(1.2)	-5.0	4.0
MBL Change (mm)	51	1.1	(1.1)	-1.0	3.5	92	1.1	(1.3)	-4.4	5.2	143	1.1	(1.2)	-4.4	5.2

Note: N = 143 implants. Maxillary sites in the area from second premolar to second premolar were considered to be located in the esthetic zone. Abbreviations: BOP, bleeding on probing; KM, keratinized mucosa; MBL, marginal bone level; PPD, probing pocket depth; REC, recession.

TABLE A8 Buccal REC in the esthetic zone by the treatment group (intention to treat)

	Test					Control					Total				
	n	Mean	SD	Min	Max	n	Mean	SD	Min	Max	n	Mean	SD	Min	Max
Buccal REC (mm)	27	0.8	(1.0)	-1.0	3.0	24	1.2	(1.0)	0.0	4.0	51	1.0	(1.0)	-1.0	4.0

Note: N = 51 implants.

Abbreviation: REC, recession.

TABLE A 9 Evaluation of center effect. (A) Continuous parameters at baseline by center. N = 147 implants. (B) Continuous outcomes at 12 months by center (intention to treat). N = 143 implants

	Bilbao		Gothenburg		Malaga		Munich		Perugia		Trento		Total		
	n	Mean SD	n	Mean SD	n	Mean SD	n	Mean SD	n	Mean SD	n	Mean SD	n	Mean SD	
(A)															
PPD (mm)	32	8.7 (1.4)	49	8.1 (1.2)	19	10.1 (1.8)	7	8.3 (2.0)	10	8.0 (1.2)	30	8.9 (1.8)	147	8.6 (1.6)	
BOP (%)	32	83.6 (27.4)	49	94.9 (12.5)	19	98.7 (5.7)	7	92.9 (18.9)	10	95.0 (15.8)	30	80.8 (26.8)	147	90.0 (20.8)	
SOP (%)	32	31.2 (42.1)	49	54.1 (43.7)	19	26.3 (28.2)	7	28.6 (36.6)	10	15.0 (33.7)	30	20.8 (31.5)	147	34.9 (40.4)	
Plaque (%)	32	29.7 (39.9)	49	4.1 (17.9)	19	18.4 (21.8)	7	25.0 (38.2)	10	70.0 (48.3)	30	12.5 (24.3)	147	18.7 (33.3)	
Buccal soft tissue level (mm)	32	1.0 (1.4)	49	0.2 (1.7)	19	0.5 (0.8)	7	0.6 (0.8)	10	0.5 (1.2)	30	0.3 (1.0)	147	0.5 (1.3)	
Buccal KM (mm)	32	1.5 (1.7)	49	2.4 (1.8)	19	3.0 (2.3)	7	3.0 (2.8)	10	2.8 (1.2)	30	2.3 (1.4)	147	2.3 (1.8)	
MBL (mm)	32	6.5 (2.2)	49	5.9 (1.8)	19	7.3 (1.4)	7	5.7 (1.9)	10	5.8 (2.3)	30	5.4 (1.9)	147	6.1 (2.0)	
(B)															
PPD Change (mm)	32	-3.4 (2.4)	48	-4.1 (1.5)	18	-4.2 (2.8)	6	-2.7 (2.3)	9	-3.9 (1.7)	30	-3.1 (2.6)	143	-3.7 (2.2)	
BOP% Change	32	-48.4 (46.6)	48	-54.2 (36.2)	18	-55.6 (35.9)	6	0.0 (0.8)	9	-61.1 (39.7)	30	-35.0 (30.5)	143	-47.2 (38.8)	
Buccal REC (mm)	32	0.7 (1.5)	48	1.2 (0.9)	18	0.7 (1.0)	6	0.3 (0.8)	9	1.3 (1.3)	30	0.7 (1.5)	143	0.9 (1.2)	
Buccal KM Change (mm)	32	0.0 (1.9)	48	-0.3 (0.9)	18	-0.6 (0.9)	6	0.0 (1.3)	9	-0.8 (0.8)	30	-0.5 (0.9)	143	-0.3 (1.2)	
MBL Change (mm)	32	0.9 (0.9)	48	1.4 (1.3)	18	1.1 (1.4)	6	1.6 (2.0)	9	0.5 (0.8)	30	0.8 (1.2)	143	1.1 (1.2)	
Plaque at 12 months - pp ^a	32	27.3 (33.2)	47	4.8 (14.4)	17	30.9 (40.0)	4	43.8 (42.7)	9	38.9 (48.6)	28	21.4 (33.8)	137	20.1 (32.6)	

Abbreviations: BOP, bleeding on probing; KM, keratinized mucosa; MBL, marginal bone level; REC—recession; PPD, probing pocket depth; REC, recession.
^aPlaque at 12 months is reported per protocol.

TABLE A 10 Composite outcome at 12 months by center (intention to treat)

	Bilbao		Gothenburg		Malaga		Munich		Perugia		Trento		Total	
	n	%	n	%	n	%	n	%	n	%	n	%	n	%
Composite outcome	6	18.8%	6	12.2%	2	10.55	0	0.0%	2	20.0%	6	20.0%	22	15.0%
Complete ^a	26	81.2%	43	87.8%	17	89.5%	7	100.0%	8	80.0%	24	80.0%	125	85.0%

Note: N = 147 implants.

^aComplete defined as implant not lost, no bleeding on probing, no suppuration on probing, probing pocket depth ≤5 mm, and buccal recession ≤1 mm.

TABLE A11 Logistic regression: Composite outcome at 12 months comparing centers (intention to treat)

	Odds ratio	95% Confidence interval	p-Value
Bilbao	1.00	-	-
Göteborg	0.60	0.18/2.07	.423
Malaga	0.51	0.09/2.83	.441
Munich	^a		
Perugia	1.08	0.18/6.46	.930
Trento	1.08	0.31/3.82	.901
Intercept	0.23	0.09/0.56	.001

Note: N = 147 implants.

^aOne cell with 0 observations.

TABLE A12 Regression analysis of continuous outcomes comparing centers, adjusted for multiple comparisons (Bonferroni) (intention to treat)

	Contrast	Standard error	t-Value	p-Value
PPD change				
Göteborg versus Bilbao	-0.69	0.40	-1.70	1.00
Malaga versus Bilbao	-0.78	0.52	-1.51	1.00
Munich versus Bilbao	0.77	0.79	0.98	1.00
Perugia versus Bilbao	-0.45	0.67	-0.68	1.00
Trento versus Bilbao	0.34	0.45	0.75	1.00
Malaga versus Göteborg	-0.10	0.49	-0.20	1.00
Munich versus Göteborg	1.46	0.77	1.90	.86
Perugia versus Göteborg	0.24	0.64	0.37	1.00
Trento versus Göteborg	1.03	0.41	2.49	.20
Munich versus Malaga	1.56	0.83	1.87	.94
Perugia versus Malaga	0.33	0.72	0.46	1.00
Trento versus Malaga	1.12	0.53	2.13	.51
Perugia versus Munich	-1.22	0.93	-1.31	1.00
Trento versus Munich	-0.43	0.79	-0.55	1.00
Trento versus Perugia	0.79	0.67	1.17	1.00
MBL change				
Göteborg versus Bilbao	0.48	0.20	2.42	.24
Malaga versus Bilbao	0.12	0.25	0.48	1.00
Munich versus Bilbao	0.68	0.38	1.78	1.00
Perugia versus Bilbao	-0.45	0.32	-1.37	1.00
Trento versus Bilbao	-0.11	0.22	-0.52	1.00
Malaga versus Göteborg	-0.35	0.24	-1.49	1.00
Munich versus Göteborg	0.21	0.37	0.56	1.00
Perugia versus Göteborg	-0.92	0.31	-2.94	.05
Trento versus Göteborg	-0.59	0.20	-2.94	.05
Munich versus Malaga	0.56	0.41	1.39	1.00
Perugia versus Malaga	-0.57	0.35	-1.61	1.00
Trento versus Malaga	-0.23	0.26	-0.91	1.00
Perugia versus Munich	-1.13	0.45	-2.49	.20
Trento versus Munich	-0.80	0.39	-2.07	.59
Trento versus Perugia	0.33	0.33	1.01	1.00

Note: N = 143 implants. Outcomes are graphically illustrated in [Figure A7](#).

TABLE A13 Missing values for the different parameters by time point

	Test			Control			Total		
	Baseline	6 months	12 months	Baseline	6 months	12 months	Baseline	6 months	12 months
PPD	0	4	3	0	5	3	0	9	6 ^a
BOP	0	4	3	0	5	3	0	9	6 ^a
Buccal Soft Tissue Level	0	4	3	0	5	3	0	9	6 ^a
Buccal KM	0	4	3	0	5	3	0	9	6 ^a
MBL	0	-	3	0	-	3	0	-	6 ^a

Note: Unit of analysis: Implant.

Abbreviations: BOP, bleeding on probing; KM, keratinized mucosa; MBL, marginal bone level; PPD, probing pocket depth.

^aSix implants in five patients.

Study outline

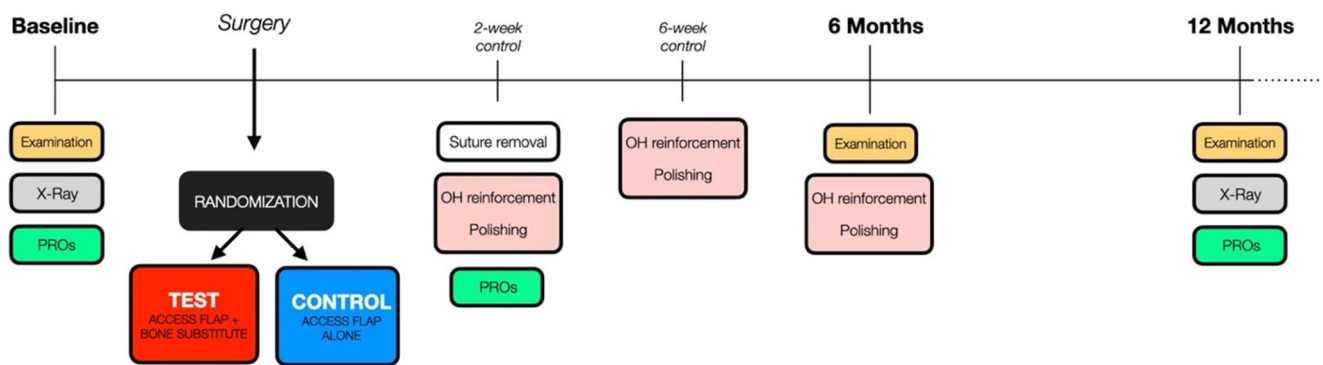


FIGURE A1 Flowchart illustrating the study outline

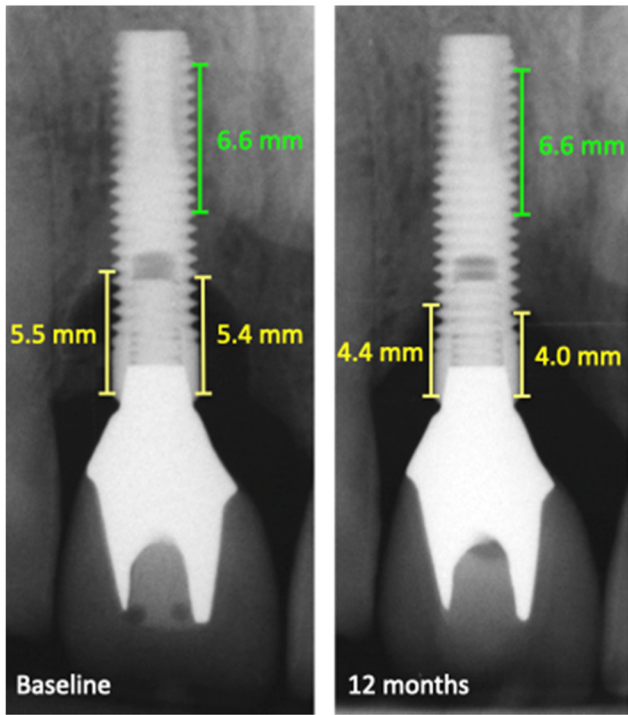


FIGURE A2 Illustration of radiographic evaluation of marginal bone levels at baseline and at 1 year. Images were calibrated by known distances (green line).

**Questionnaire
Baseline (prior to surgery)**

1. Are you experiencing any discomfort or pain from the implant(s) scheduled for surgery?

 0 No pain/discomfort 100 Substantial pain/discomfort
2. Are you experiencing any bad taste or smell from the implant(s) scheduled for surgery?

 0 No bad taste/smell 100 Substantial bad taste/smell
3. Are you experiencing any discomfort or pain when brushing the implant(s) scheduled for surgery?

 0 None 100 Substantial pain/discomfort
4. Are you experiencing any discomfort or pain when chewing with the implant(s) scheduled for surgery?

 0 No pain/discomfort 100 Substantial pain/discomfort
5. Are you satisfied with the esthetic appearance of the implant(s) scheduled for surgery?

 0 Not at all satisfied 100 Fully satisfied

**Questionnaire
2 weeks after surgery**

1. How would you describe the surgery?

 0 Not unpleasant at all 100 Very unpleasant
2. Did you experience discomfort/pain following the surgery?

 0 No discomfort/pain 100 Substantial discomfort/pain
3. Are you still experiencing discomfort/pain?

 0 No discomfort/pain 100 Substantial discomfort/pain
4. Comment (Eg "adverse events"):

**Questionnaire
1 year after surgery**

1. Are you experiencing any discomfort or pain from the implant(s) that were treated surgically?

 0 No pain/discomfort 100 Substantial pain/discomfort
2. Are you experiencing any bad taste or smell from the implant(s) that were treated surgically?

 0 No bad taste/smell 100 Substantial bad taste/smell
3. Are you experiencing any discomfort or pain when brushing the implant(s) that were treated surgically?

 0 No pain/discomfort 100 Substantial pain/discomfort
4. Are you experiencing any discomfort or pain when chewing with the implant(s) that were treated surgically?

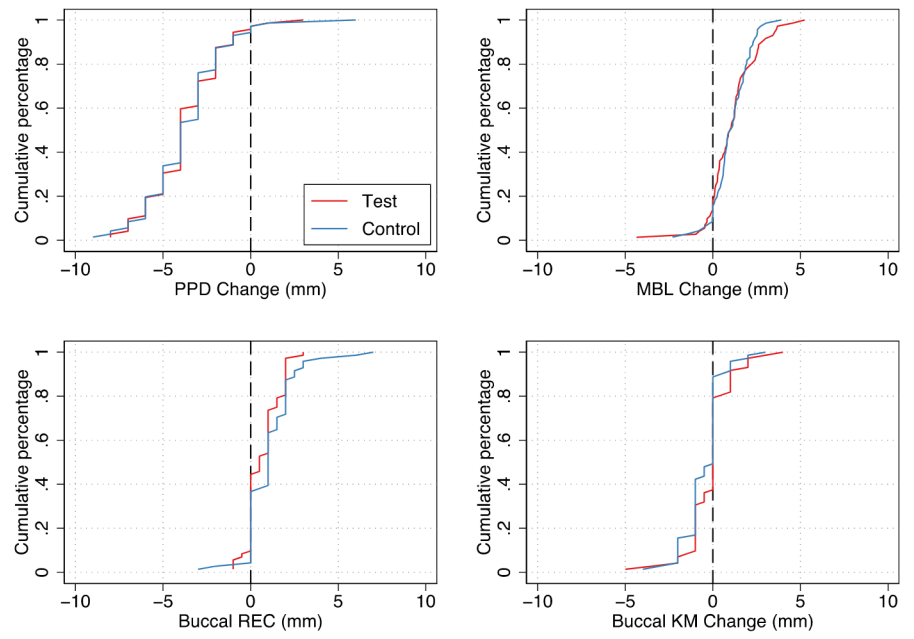
 0 No pain/discomfort 100 Substantial pain/discomfort
5. Are you satisfied with the esthetic appearance of the implant(s) that were treated surgically?

 0 Not at all satisfied 100 Fully satisfied
6. How do you judge the outcome of therapy?

 0 Failure 100 Complete success

FIGURE A3 Questionnaires provided to study participants at baseline, at 2 weeks and at 12 months

FIGURE A4 Cumulative curves of continuous outcomes at 12 months by group. $N = 143$ implants. KM, keratinized mucosa; MBL, marginal bone level; PPD, probing pocket depth; REC, recession.



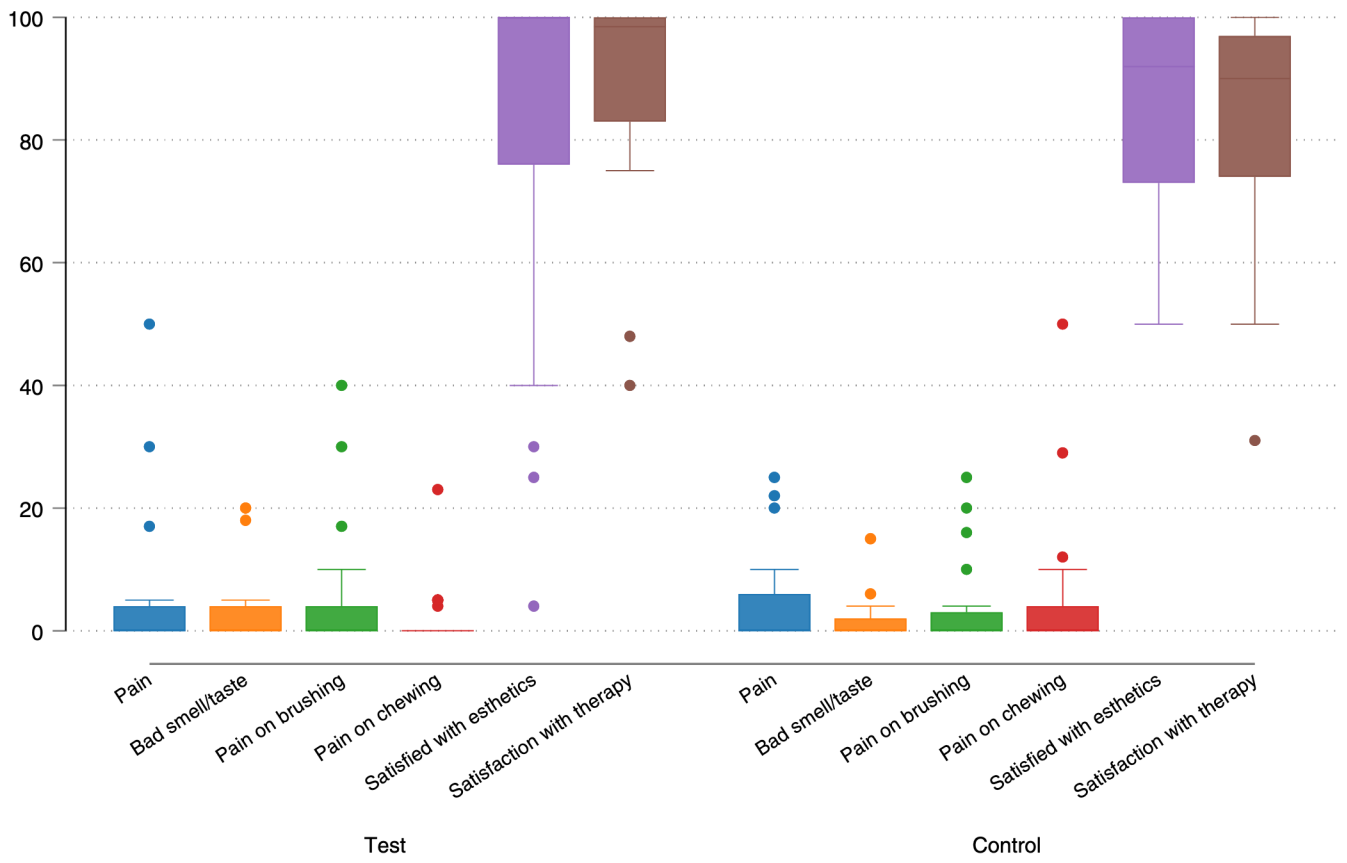


FIGURE A5 Patient-reported outcomes at 12 months by group considering only subjects with treated implant sites in the esthetic zone (second premolar to second premolar in the maxilla). Outcomes were scored on a VAS (100 mm). *N* = 47 patients



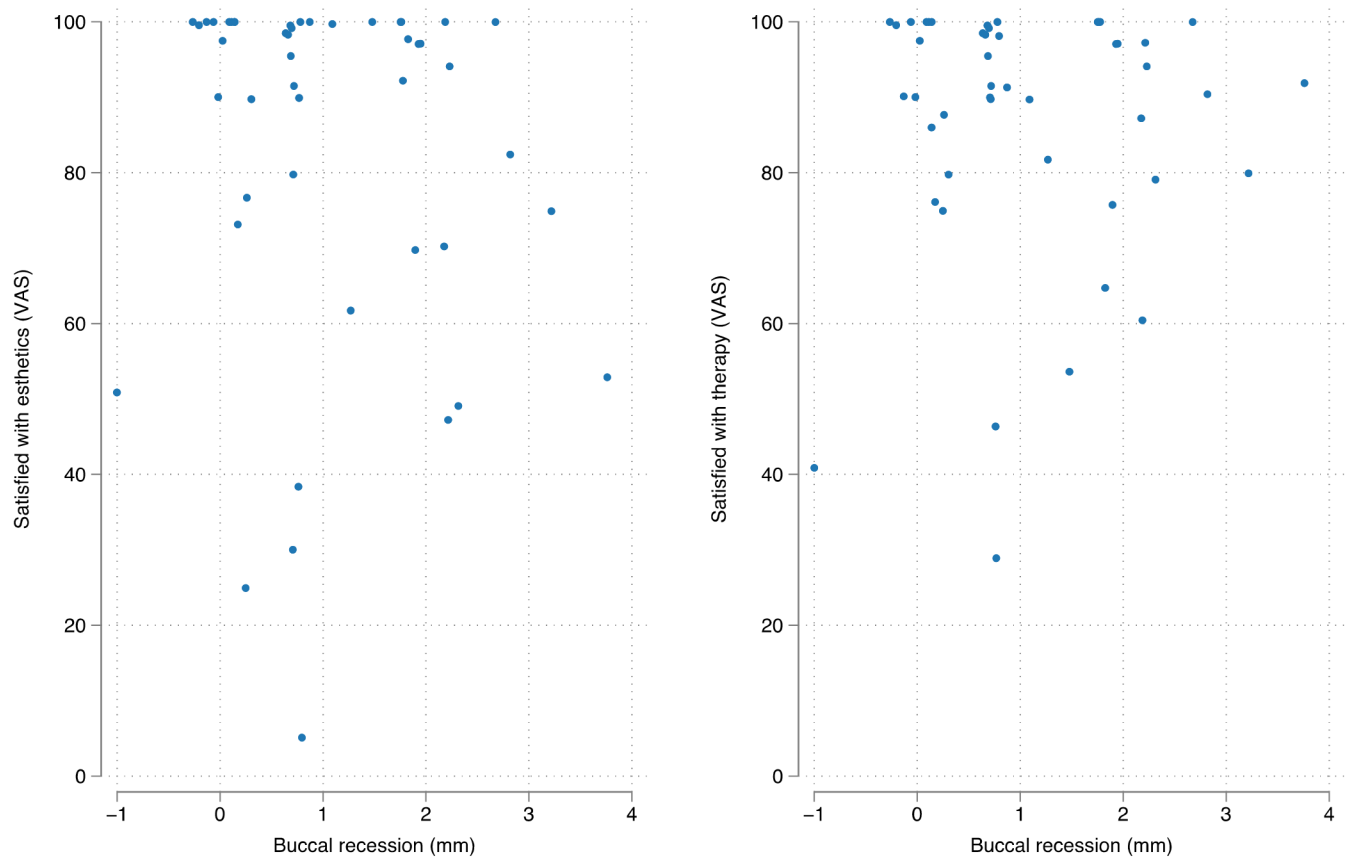


FIGURE A6 Patient satisfaction by soft tissue recession considering only subjects with treated implant sites in the esthetic zone (second premolar to second premolar in the maxilla). $N = 47$ patients. VAS, visual analog scale

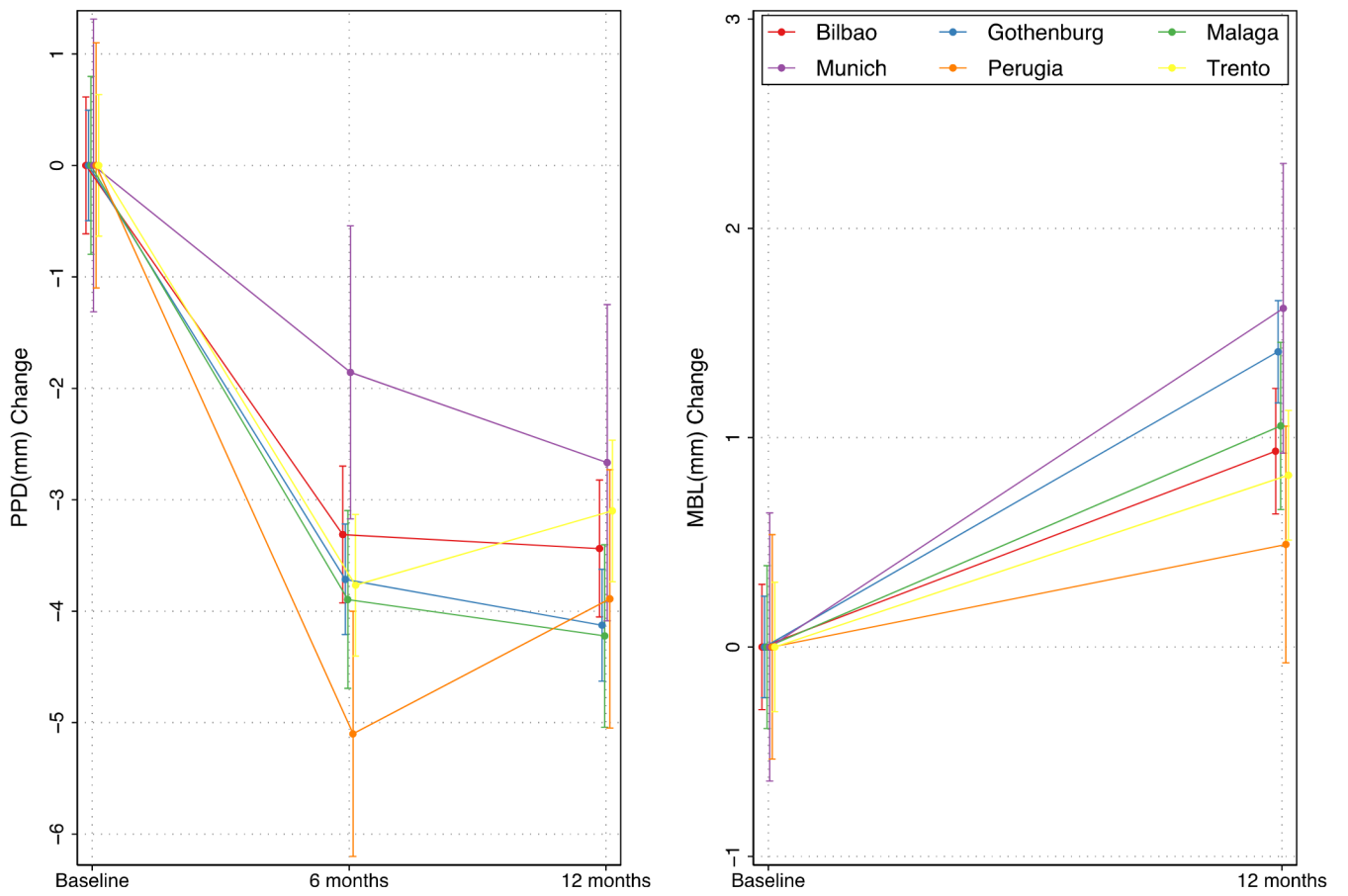


FIGURE A7 Illustration of potential center effect: Probing pocket depth change and marginal bone level change by center. N = 143 implants. Results of the statistical testing are illustrated in [Table A12](#). MBL, marginal bone level; PPD, probing pocket depth.

