

**Fermi-GBM Discovery of GRB 221009A:
An Extraordinarily Bright GRB from Onset to Afterglow**

S. LESAGE,^{1,2} P. VERES,^{1,2} M. S. BRIGGS,^{1,2} A. GOLDSTEIN,³ D. KOCEVSKI,⁴ E. BURNS,⁵ C. A. WILSON-HODGE,⁴
P. N. BHAT,^{1,2} D. HUPPENKOTHEN,⁶ C. L. FRYER,⁷ R. HAMBURG,⁸ J. RACUSIN,⁹ E. BISSALDI,^{10,11} W. H. CLEVELAND,³
S. DALESSI,^{1,2} C. FLETCHER,³ M. M. GILES,¹² B. A. HRISTOV,² C. M. HUI,⁴ B. MAILYAN,¹³ S. POOLAKKIL,^{1,2}
O. J. ROBERTS,³ A. VON KIENLIN,¹⁴ J. WOOD,⁴ M. AJELLO,¹⁵ M. ARIMOTO,¹⁶ L. BALDINI,¹⁷ J. BALLEZ,¹⁸ M. G. BARING,¹⁹
D. BASTIERI,^{20,21,22} J. BECERRA GONZALEZ,²³ R. BELLAZZINI,²⁴ E. BISSALDI,^{25,26} R. D. BLANDFORD,²⁷ R. BONINO,^{28,29}
P. BRUEL,³⁰ S. BUSON,³¹ R. A. CAMERON,²⁷ R. CAPUTO,³² P. A. CARAVEO,³³ E. CAVAZZUTI,³⁴ G. CHIARO,³³
N. CIBRARIO,^{28,29} S. CIPRINI,^{35,36} P. CRISTARELLA ORESTANO,^{37,38} M. CRNOGORCEVIC,^{39,32} A. CUOCO,^{28,29} S. CUTINI,³⁸
F. D'AMMANDO,⁴⁰ S. DE GAETANO,^{26,25} N. DI LALLA,²⁷ L. DI VENERE,²⁶ A. DOMÍNGUEZ,⁴¹ S. J. FEGAN,³⁰
E. C. FERRARA,^{39,42,32} H. FLEISCHHACK,^{43,32,42} Y. FUKAZAWA,⁴⁴ S. FUNK,⁴⁵ P. FUSCO,^{25,26} G. GALANTI,³³
V. GAMMALDI,^{46,47} F. GARGANO,²⁶ C. GASBARRA,^{35,48} D. GASPARRINI,^{35,36} S. GERMANI,³⁷ F. GIACCHINO,^{35,36}
N. GIGLIETTO,^{25,26} R. GILL,^{49,50} M. GIROLETTI,⁴⁰ J. GRANOT,^{51,50,52} D. GREEN,⁵³ I. A. GRENIER,⁵⁴ S. GUIRIEC,^{52,32}
M. GUSTAFSSON,⁵⁵ E. HAYS,³² J. W. HEWITT,⁵⁶ D. HORAN,³⁰ X. HOU,^{57,58} M. KUSS,²⁴ L. LATRONICO,²⁸ A. LAVIRON,³⁰
M. LEMOINE-GOUMARD,⁵⁹ J. LI,^{60,61} I. LIODAKIS,⁶² F. LONGO,^{63,64} F. LOPARCO,^{25,26} L. LORUSSO,^{25,26}
M. N. LOVELLETTE,⁶⁵ P. LUBRANO,³⁸ S. MALDERA,²⁸ A. MANFREDA,¹⁷ G. MARTÍ-DEVEZA,⁶⁶ M. N. MAZZIOTTA,²⁶
J. E. MCENERY,^{32,39} I. MEREU,^{38,37} M. MEYER,⁶⁷ P. F. MICHELSON,²⁷ T. MIZUNO,⁶⁸ M. E. MONZANI,^{27,69} A. MORSELLI,³⁵
I. V. MOSKALENKO,²⁷ M. NEGRO,^{70,32} E. NUSS,⁷¹ N. OMODEI,²⁷ E. ORLANDO,^{72,27} J. F. ORMES,⁷³ D. PANEQUE,⁵³
G. PANZARINI,^{25,26} M. PERSIC,^{64,74} M. PESCE-ROLLINS,²⁴ R. PILLERA,^{25,26} F. PIRON,⁷¹ H. POON,⁴⁴ T. A. PORTER,²⁷
G. PRINCIPE,^{63,64,40} S. RAINÒ,^{25,26} R. RANDO,^{21,20,22} B. RANI,^{75,32,76} M. RAZZANO,¹⁷ S. RAZZAQUE,^{77,52} A. REIMER,⁶⁶
O. REIMER,⁶⁶ F. RYDE,^{78,79} M. SÁNCHEZ-CONDE,^{47,46} P. M. SAZ PARKINSON,⁸⁰ L. SCOTTON,⁷¹ D. SERINI,²⁶ C. SGRÒ,²⁴
V. SHARMA,⁴² E. J. SISKIND,⁸¹ G. SPANDRE,²⁴ P. SPINELLI,^{25,26} H. TAJIMA,^{82,83} D. F. TORRES,^{84,85} J. VALVERDE,^{70,32}
T. VENTERS,³² Z. WADIASINGH,³² K. WOOD,⁸⁶ AND G. ZAHARIJAS⁸⁷

¹Department of Space Science, University of Alabama in Huntsville, 320 Sparkman Drive, Huntsville, AL 35899, USA

²Center for Space Plasma and Aeronomic Research, University of Alabama in Huntsville, Huntsville, AL 35899, USA

³Science and Technology Institute, Universities Space Research Association, Huntsville, AL 35805, USA

⁴ST12 Astrophysics Branch, NASA Marshall Space Flight Center, Huntsville, AL 35812, USA

⁵Department of Physics and Astronomy, Louisiana State University, Baton Rouge, LA 70803 USA

⁶SRON Netherlands Institute for Space Research, Niels Bohrweg 4, 2333CA Leiden, The Netherlands

⁷Center for Non Linear Studies, Los Alamos National Laboratory, Los Alamos, NM, 87545, USA

⁸Université Paris-Saclay, CNRS/IN2P3, IJCLab, 91405 Orsay, France

⁹Astrophysics Science Division, NASA Goddard Space Flight Center, Greenbelt, MD 20771, USA

¹⁰Dipartimento Interateneo di Fisica dell'Università e Politecnico di Bari, Via E. Orabona 4, 70125, Bari, Italy

¹¹Istituto Nazionale di Fisica Nucleare - Sezione di Bari, Via E. Orabona 4, 70125, Bari, Italy

¹²Jacobs Space Exploration Group, Huntsville, AL 35806, USA

¹³Department of Aerospace, Physics and Space Sciences, Florida Institute of Technology, Melbourne, FL 32901, USA

¹⁴Max-Planck-Institut für extraterrestrische Physik, Giessenbachstrasse 1, D-85748 Garching, Germany

¹⁵Department of Physics and Astronomy, Clemson University, Kinard Lab of Physics, Clemson, SC 29634-0978, USA

¹⁶Faculty of Mathematics and Physics, Institute of Science and Engineering, Kanazawa University, Kakuma, Kanazawa, Ishikawa 920-1192

¹⁷Università di Pisa and Istituto Nazionale di Fisica Nucleare, Sezione di Pisa I-56127 Pisa, Italy

¹⁸Université Paris-Saclay, Université Paris Cité, CEA, CNRS, AIM, F-91191 Gif-sur-Yvette Cedex, France

¹⁹Rice University, Department of Physics and Astronomy, MS-108, P. O. Box 1892, Houston, TX 77251, USA

²⁰Istituto Nazionale di Fisica Nucleare, Sezione di Padova, I-35131 Padova, Italy

²¹Dipartimento di Fisica e Astronomia "G. Galilei", Università di Padova, Via F. Marzolo, 8, I-35131 Padova, Italy

²²Center for Space Studies and Activities "G. Colombo", University of Padova, Via Venezia 15, I-35131 Padova, Italy

²³Instituto de Astrofísica de Canarias and Universidad de La Laguna, Dpto. Astrofísica, 38200 La Laguna, Tenerife, Spain

²⁴Istituto Nazionale di Fisica Nucleare, Sezione di Pisa, I-56127 Pisa, Italy

²⁵Dipartimento di Fisica "M. Merlin" dell'Università e del Politecnico di Bari, via Amendola 173, I-70126 Bari, Italy

- ²⁶ *Istituto Nazionale di Fisica Nucleare, Sezione di Bari, I-70126 Bari, Italy*
- ²⁷ *W. W. Hansen Experimental Physics Laboratory, Kauli Institute for Particle Astrophysics and Cosmology, Department of Physics and SLAC National Accelerator Laboratory, Stanford University, Stanford, CA 94305, USA*
- ²⁸ *Istituto Nazionale di Fisica Nucleare, Sezione di Torino, I-10125 Torino, Italy*
- ²⁹ *Dipartimento di Fisica, Università degli Studi di Torino, I-10125 Torino, Italy*
- ³⁰ *Laboratoire Leprince-Ringuet, CNRS/IN2P3, École polytechnique, Institut Polytechnique de Paris, 91120 Palaiseau, France*
- ³¹ *Institut für Theoretische Physik and Astrophysik, Universität Würzburg, D-97074 Würzburg, Germany*
- ³² *NASA Goddard Space Flight Center, Greenbelt, MD 20771, USA*
- ³³ *INAF-Istituto di Astrofisica Spaziale e Fisica Cosmica Milano, via E. Bassini 15, I-20133 Milano, Italy*
- ³⁴ *Italian Space Agency, Via del Politecnico snc, 00133 Roma, Italy*
- ³⁵ *Istituto Nazionale di Fisica Nucleare, Sezione di Roma “Tor Vergata”, I-00133 Roma, Italy*
- ³⁶ *Space Science Data Center - Agenzia Spaziale Italiana, Via del Politecnico, snc, I-00133, Roma, Italy*
- ³⁷ *Dipartimento di Fisica, Università degli Studi di Perugia, I-06123 Perugia, Italy*
- ³⁸ *Istituto Nazionale di Fisica Nucleare, Sezione di Perugia, I-06123 Perugia, Italy*
- ³⁹ *Department of Astronomy, University of Maryland, College Park, MD 20742, USA*
- ⁴⁰ *INAF Istituto di Radioastronomia, I-40129 Bologna, Italy*
- ⁴¹ *Grupo de Altas Energías, Universidad Complutense de Madrid, E-28040 Madrid, Spain*
- ⁴² *Center for Research and Exploration in Space Science and Technology (CRESSST) and NASA Goddard Space Flight Center, Greenbelt, MD 20771, USA*
- ⁴³ *Catholic University of America, Washington, DC 20064, USA*
- ⁴⁴ *Department of Physical Sciences, Hiroshima University, Higashi-Hiroshima, Hiroshima 739-8526, Japan*
- ⁴⁵ *Friedrich-Alexander Universität Erlangen-Nürnberg, Erlangen Centre for Astroparticle Physics, Erwin-Rommel-Str. 1, 91058 Erlangen, Germany*
- ⁴⁶ *Departamento de Física Teórica, Universidad Autónoma de Madrid, 28049 Madrid, Spain*
- ⁴⁷ *Instituto de Física Teórica UAM/CSIC, Universidad Autónoma de Madrid, E-28049 Madrid, Spain*
- ⁴⁸ *Dipartimento di Fisica, Università di Roma “Tor Vergata”, I-00133 Roma, Italy*
- ⁴⁹ *Instituto de Radioastronomía y Astrofísica, Universidad Nacional Autónoma de México, Antigua Carretera a Pátzcuaro # 8701, Ex-Hda, San José de la Huerta, Morelia, Michoacán, México C.P. 58089*
- ⁵⁰ *Astrophysics Research Center of the Open university (ARCO), The Open University of Israel, P.O Box 808, Ra’anana 43537, Israel*
- ⁵¹ *Department of Natural Sciences, Open University of Israel, 1 University Road, POB 808, Ra’anana 43537, Israel*
- ⁵² *The George Washington University, Department of Physics, 725 21st St, NW, Washington, DC 20052, USA*
- ⁵³ *Max-Planck-Institut für Physik, D-80805 München, Germany*
- ⁵⁴ *Université Paris Cité, Université Paris-Saclay, CEA, CNRS, AIM, F-91191 Gif-sur-Yvette, France*
- ⁵⁵ *Georg-August University Göttingen, Institute for theoretical Physics - Faculty of Physics, Friedrich-Hund-Platz 1, D-37077 Göttingen, Germany*
- ⁵⁶ *University of North Florida, Department of Physics, 1 UNF Drive, Jacksonville, FL 32224, USA*
- ⁵⁷ *Yunnan Observatories, Chinese Academy of Sciences, 396 Yangfangwang, Guandu District, Kunming 650216, P. R. China*
- ⁵⁸ *Key Laboratory for the Structure and Evolution of Celestial Objects, Chinese Academy of Sciences, 396 Yangfangwang, Guandu District, Kunming 650216, P. R. China*
- ⁵⁹ *Université Bordeaux, CNRS, LP2I Bordeaux, UMR 5797, F-33170 Gradignan, France*
- ⁶⁰ *CAS Key Laboratory for Research in Galaxies and Cosmology, Department of Astronomy, University of Science and Technology of China, Hefei 230026, People’s Republic of China*
- ⁶¹ *School of Astronomy and Space Science, University of Science and Technology of China, Hefei 230026, People’s Republic of China*
- ⁶² *Finnish Centre for Astronomy with ESO (FINCA), University of Turku, FI-21500 Piikkiö, Finland*
- ⁶³ *Dipartimento di Fisica, Università di Trieste, I-34127 Trieste, Italy*
- ⁶⁴ *Istituto Nazionale di Fisica Nucleare, Sezione di Trieste, I-34127 Trieste, Italy*
- ⁶⁵ *The Aerospace Corporation, 14745 Lee Rd, Chantilly, VA 20151, USA*
- ⁶⁶ *Institut für Astro- und Teilchenphysik, Leopold-Franzens-Universität Innsbruck, A-6020 Innsbruck, Austria*
- ⁶⁷ *Center for Cosmology and Particle Physics Phenomenology, University of Southern Denmark, Campusvej 55, DK-5230 Odense M, Denmark*
- ⁶⁸ *Hiroshima Astrophysical Science Center, Hiroshima University, Higashi-Hiroshima, Hiroshima 739-8526, Japan*
- ⁶⁹ *Vatican Observatory, Castel Gandolfo, V-00120, Vatican City State*
- ⁷⁰ *Department of Physics and Center for Space Sciences and Technology, University of Maryland Baltimore County, Baltimore, MD 21250, USA*
- ⁷¹ *Laboratoire Univers et Particules de Montpellier, Université Montpellier, CNRS/IN2P3, F-34095 Montpellier, France*
- ⁷² *Istituto Nazionale di Fisica Nucleare, Sezione di Trieste, and Università di Trieste, I-34127 Trieste, Italy*
- ⁷³ *Department of Physics and Astronomy, University of Denver, Denver, CO 80208, USA*
- ⁷⁴ *INAF-Astronomical Observatory of Padova, Vicolo dell’Osservatorio 5, I-35122 Padova, Italy*

⁷⁵*Korea Astronomy and Space Science Institute, 776 Daedeokdae-ro, Yuseong-gu, Daejeon 30455, Korea*

⁷⁶*Department of Physics, American University, Washington, DC 20016, USA*

⁷⁷*Centre for Astro-Particle Physics (CAPP) and Department of Physics, University of Johannesburg, PO Box 524, Auckland Park 2006, South Africa*

⁷⁸*Department of Physics, KTH Royal Institute of Technology, AlbaNova, SE-106 91 Stockholm, Sweden*

⁷⁹*The Oskar Klein Centre for Cosmoparticle Physics, AlbaNova, SE-106 91 Stockholm, Sweden*

⁸⁰*Santa Cruz Institute for Particle Physics, Department of Physics and Department of Astronomy and Astrophysics, University of California at Santa Cruz, Santa Cruz, CA 95064, USA*

⁸¹*NYCB Real-Time Computing Inc., Lattingtown, NY 11560-1025, USA*

⁸²*Nagoya University, Institute for Space-Earth Environmental Research, Furo-cho, Chikusa-ku, Nagoya 464-8601, Japan*

⁸³*Kobayashi-Maskawa Institute for the Origin of Particles and the Universe, Nagoya University, Furo-cho, Chikusa-ku, Nagoya, Japan*

⁸⁴*Institute of Space Sciences (ICE, CSIC), Campus UAB, Carrer de Magrans s/n, E-08193 Barcelona, Spain; and Institut d'Estudis Espacials de Catalunya (IEEC), E-08034 Barcelona, Spain*

⁸⁵*Institució Catalana de Recerca i Estudis Avançats (ICREA), E-08010 Barcelona, Spain*

⁸⁶*Praxis Inc., Alexandria, VA 22303, resident at Naval Research Laboratory, Washington, DC 20375, USA*

⁸⁷*Center for Astrophysics and Cosmology, University of Nova Gorica, Nova Gorica, Slovenia*

ABSTRACT

We report the discovery of GRB 221009A, the highest flux gamma-ray burst ever observed by the *Fermi* Gamma-ray Burst Monitor (*Fermi*-GBM). This GRB has continuous prompt emission lasting more than 600 seconds, afterglow visible in the *Fermi*-GBM energy range (8 keV–40 MeV), and total energetics higher than any other burst in the *Fermi*-GBM sample. By using a variety of new and existing analysis techniques we probe the spectral and temporal evolution of GRB 221009A. We find no emission prior to the *Fermi*-GBM trigger time (t_0 ; 2022 October 9 at 13:16:59.99 UTC), indicating that this is the time of prompt emission onset. The triggering pulse exhibits distinct spectral and temporal properties suggestive of shock-breakout with significant emission up to ~ 15 MeV. We characterize the onset of external shock at t_0+600 s and find evidence of a plateau region in the early-afterglow phase which transitions to a slope consistent with *Swift*-XRT afterglow measurements. We place the total energetics of GRB 221009A in context with the rest of the *Fermi*-GBM sample and find that this GRB has the highest total isotropic-equivalent energy ($E_{\gamma,\text{iso}} = 1.0 \times 10^{55}$ erg) and second highest isotropic-equivalent luminosity ($L_{\gamma,\text{iso}} = 9.9 \times 10^{53}$ erg/s) based on redshift of $z = 0.151$. These extreme energetics are what allowed *Fermi*-GBM to observe the continuously emitting central engine from the beginning of the prompt emission phase through the onset of early afterglow.

Keywords: gamma rays: individual (221009A)

1. INTRODUCTION

Gamma-ray bursts (GRBs) are the brightest signatures of stellar deaths in the Universe. They are produced by ultra-relativistic, collimated jets formed via two main progenitor channels: the merging of binary neutron star systems (BNSs; Eichler et al. 1989; Narayan et al. 1992; Abbott et al. 2017) and the core collapse of rapidly-rotating massive, stripped-envelope stars (Woosley 1993; MacFadyen & Woosley 1999). Prompt GRB emission is highly variable, lasting from tens of milliseconds up to ten thousand seconds, and is thought to arise from either internal shocks or magnetic reconnections within a relativistically expanding jet (Goodman 1986; Paczynski 1986; Rees & Mészáros 1994). The prompt emission is followed by a longer-lived external shock “afterglow” component that arises

from the interaction of the jet with the surrounding medium. This afterglow component can be observed across the electromagnetic spectrum and is well-described as non-thermal synchrotron radiation arising from shock-accelerated electrons leading the jet (Mészáros & Rees 1993, 1997; Sari et al. 1998).

The Gamma-ray Burst Monitor onboard the *Fermi* Gamma-ray Space Telescope (*Fermi*-GBM) has detected over 3500 GRBs, with approximately 8% of these bursts also detected by the *Fermi* Large Area Telescope (*Fermi*-LAT) at energies >100 MeV (Ajello et al. 2019). The resulting observations have dramatically expanded our current understanding of broadband emission from GRBs, yet fundamental questions regarding the physical processes and radiation mechanisms that produce the GRB prompt emission still remain.

Emitting the bulk of their energy between 1 keV and 1 MeV, GRBs exhibit a range of spectral shapes and can include multiple components, posing significant challenges to attributing the prompt emission to any single physical process or radiation mechanism. The broadband prompt emission is characterized as a featureless non-thermal spectrum that is most commonly modeled with a phenomenological smoothly broken power-law model known as the Band function (Band et al. 1993). This emission is typically attributed to optically thin synchrotron emission, despite long-standing challenges in matching model predictions to the observed spectral shape of the prompt emission (Preece et al. 1998). Detailed time-resolved analysis of *Fermi*-GBM observations have also revealed additional low-energy components superimposed on the broadband spectra, including a quasi-thermal component thought to be due to emission from an optically thick photosphere (Ryde et al. 2011; Guiriec et al. 2011; Axelsson et al. 2012; Guiriec et al. 2015). Studies have shown that some of the difficulties in attributing the shape of the GRB prompt emission to synchrotron emission can be alleviated by the inclusion of these additional low-energy components (Burgess et al. 2011; Guiriec et al. 2011; Beniamini & Piran 2013; Oganessian et al. 2017).

Deciphering GRB spectra is further complicated by the presence (or lack thereof) of high-energy emission ($\gtrsim 100$ MeV). For GRBs observed by both the *Fermi*-GBM and *Fermi*-LAT, an additional high-energy power-law is often required to fit emission extending above ~ 100 MeV, and evidence for such a component can often be seen extending down into X-ray energies (< 20 keV). The emergence of this component is typically delayed with respect to the initial keV emission and has been attributed to afterglow emission arising during the prompt phase (Abdo et al. 2009; Ackermann et al. 2010; Ackermann et al. 2011; Ackermann et al. 2014). A higher energy component has also been observed at TeV energies, with GRB 190114C representing the first published detection of such photons from a GRB (Acciari et al. 2019; MAGIC Collaboration et al. 2019; Ajello et al. 2020). These observations provided the first evidence of possible synchrotron self-Compton (SSC) radiation long predicted to play a role in the high-energy GRB afterglow emission. Subsequent reports of TeV emission with various levels of significance in GRB afterglows, GRB 160821B (Acciari et al. 2021), GRB 180720B (Abdalla et al. 2019), GRB 190829A (Abdalla et al. 2021), GRB 201015A (Blanch et al. 2020), and GRB 201216C (Fukami et al. 2021) have shown that this Very High Energy (VHE) component may be common in GRB emission.

Here we present *Fermi*-GBM observations of GRB 221009A, by far the brightest GRB ever detected by *Fermi*-GBM, and for which there is an abundance of photons to accommodate the most thorough and exhaustive investigation of its spectral and temporal properties. In Section 2 we discuss the timeline of discovery for GRB 221009A and Section 3 explains how to properly use the available *Fermi*-GBM data products, given the unique challenges of analyzing this event. Section 4 provides an overview of the temporal structure within the prompt emission followed by an analysis of the spectral evolution in Section 5. The analysis results of the afterglow period are presented separately in Section 6. We then discuss the energetics associated with GRB 221009A in Section 7 before concluding in Section 8 where we put this event in context with other extraordinarily bright GRBs. Finally, we provide a summary of our results in Section 9.

2. DISCOVERY

On 2022 October 9 at 13:16:59.99 UTC (t_0), the *Fermi*-GBM flight software triggered on GRB 221009A. The *Fermi*-GBM gamma-ray burst coordinates network (GCN)¹ “Trigger Notice” was automatically distributed, but due to issues in the ground segment, further notices containing classification and localization information were not disseminated. At the time of the *Fermi*-GBM detection, the GRB was occulted by the Earth for the Neil Gehrels Swift Observatory (*Swift*). When the source position first became visible, *Swift* was transiting the South Atlantic Anomaly (SAA) and was unable to collect data, as reported by Williams et al. (2023). At 14:10:17 UTC GRB 221009A was detected by the *Swift* Burst Alert Telescope (BAT) and observations were performed by the *Swift* X-ray Telescope (XRT) and Ultraviolet Optical Telescope (UVOT) instruments, yielding a best localization at RA(J2000) = $19^{\text{h}} 13^{\text{m}} 3.48^{\text{s}}$ (288.26452°), DEC(J2000) = $+19^{\circ} 46' 24.6''$ (19.77350°) with a 90%-confidence error radius of $0.61''$ (Dichiara et al. 2022). Due to the particularly bright signal and a localization within the Galactic plane, the *Swift* team initially classified the event as having a Galactic origin.

The *Swift* GCN notices initiated the automated *Fermi*-LAT analysis pipeline which searched and identified a bright high-energy signal within the *Swift* interval. This in turn initiated a deeper inspection of the *Fermi*-GBM data which appeared as one of the brightest transients ever discovered by *Fermi*-GBM. Private communication between the *Fermi*-GBM team, the *Fermi*-LAT

¹ https://gcn.gsfc.nasa.gov/gcn3_archive.html

Collaboration, and the *Swift* team lead to the conclusion that the location of all of these transients were consistent within the respective positional uncertainties of each instrument. An initial picture of identifying the same, incredibly bright GRB, with the prompt emission being detected by *Fermi* and the afterglow being detected by *Swift* an hour later, became the working hypothesis. GCN circulars reporting the brightest GRB ever seen were promptly sent by all parties involved (Kennea & Williams 2022; Veres et al. 2022; Bissaldi et al. 2022) encouraging follow-up observations from the community. Prompt signal association was later confirmed by the InterPlanetary Network (Svinkin et al. 2022).

These initial GCN circulars were followed by more than 100 additional circulars, and some Astronomer’s Telegram notices (ATels)², reporting detections across the electromagnetic spectrum and upper limits from non-electromagnetic messengers. Some highlights from the prompt emission include:

- The first detection of TeV energy photons during the prompt emission by LHAASO (up to 18 TeV; Huang et al. 2022)
- A redshift of $z = 0.151$ reported by the VLT (de Ugarte Postigo et al. 2022b)
- The identification of rings from dust echoes from the *Swift*-XRT (Tiengo et al. 2022)
- Polarization observations from IXPE (Negro et al. 2022a,b)
- Unsaturated observations from a Solar instrument (STIX) (Xiao et al. 2022a)
- Observations from GRB CubeSats like GRBAlpha and SIRI-2 (Ripa et al. 2022; Mitchell et al. 2022)
- Non-detections of neutrinos in both IceCube and KM3NeT (The IceCube Collaboration 2022; KM3NeT Collaboration 2022)
- Measurable disturbances in Earth’s ionosphere (Schnoor et al. 2022; Guha & Nicholson 2022)

The Hubble Space Telescope performed photometry (Levan et al. 2022a) and the James Webb Space Telescope performed spectroscopy (Levan et al. 2022b, 2023; Fulton et al. 2023) of the potential supernova component and emission was still detectable at radio frequencies up to 4 months later (Williams 2023).

3. FERMI DATA

Fermi includes two scientific instruments, *Fermi*-GBM and *Fermi*-LAT. *Fermi*-GBM is a wide-field (>8 sr) survey instrument comprised of twelve sodium iodide (NaI) detectors and two bismuth germanate (BGO) detectors (Meegan et al. 2009). The NaI detectors cover the energy range from 8 keV to 1000 keV and are oriented in different directions around the spacecraft as to observe the entire unocculted sky. The two BGO detectors are on opposite sides of the spacecraft and cover an energy range from 200 keV to 40 MeV. The *Fermi*-LAT is a pair-conversion telescope at the zenith of the spacecraft and is sensitive to gamma-ray energies from 20 MeV to more than 300 GeV (Atwood et al. 2009).

The highest resolution *Fermi*-GBM data product is the Time-Tagged Event (TTE) data, tagging individual photons to 2 microsecond temporal precision at the full 128 spectral channel resolution of *Fermi*-GBM. Continuous Spectroscopy (CSPEC) data has the same full spectral resolution as TTE data but is a binned dataset with temporal resolution as fine as 1.024 s in the interval following the trigger. Continuous Time (CTIME) data has 8 spectral channels with a temporal resolution of 64 milliseconds following a trigger.

In this work we also use the *Fermi*-LAT Low Energy (LLE) data in the 30 MeV to 10 GeV energy range (Pelassa et al. 2010). All *Fermi*-LAT LLE data are used within time ranges specified in *Fermi*-LAT (2023). Both *Fermi*-GBM and LLE data are available for download via the public archive at the Fermi Science Support Center (FSSC) website^{3,4}. For details about how to properly analyze *Fermi*-GBM data products, see Appendix A. A complementary analysis including proper treatment of the *Fermi*-LAT intervals of intense photon fluxes will be reported in *Fermi*-LAT (2023).

GRB 221009A was detected by *Fermi*-GBM beginning at the trigger time (t_0) and lasting until t_0+1467 s when it was occulted by the Earth. Prior to detection, the position of the GRB was within the field of view of *Fermi* beginning at t_0-2111 s. *Fermi*-GBM detectors N3, N4, N6, N7, and N8 all had viewing angles within 60° of the burst at trigger time, but only detectors N4 and N8 stayed within 60° of the burst throughout the emission episode. These detectors, along with B1, are used throughout this analysis unless otherwise stated.

From the time of detection until Earth occultation, the incident photons hit *Fermi* at zenith angles ranging from 62° to 110° with respect to the *Fermi*-LAT

³ <https://fermi.gsfc.nasa.gov/ssc/data/>

⁴ <https://heasarc.gsfc.nasa.gov/FTP/fermi/>

² <https://astronomerstelegam.org/>

boresight and azimuth angles ranging from 258° to 263° (from 12° to 7° with respect to the BGO endcaps on the BGO detector plane). At such geometries, the incident photons travel through the BGO photomultiplier tubes and their housings, which are not adequately modeled in the detector response at low energies. We therefore omit the BGO data below 400 keV throughout our analysis. The NaI spectra show deviations between the model and the data below 20 keV that needs further analysis; these NaI data are therefore omitted from the spectral analysis.

Due to the extraordinarily high photon flux produced by GRB 221009A, both *Fermi*-GBM and *Fermi*-LAT experienced periods with data issues⁵ (Lesage et al. 2022; Omodei et al. 2022a,b). We identify these periods as bad time intervals (BTIs). In *Fermi*-GBM, during these BTIs, the majority of TTE data are unrecoverable due to the summed count rate of all detectors exceeding the 375 kHz data rate limit of the *Fermi*-GBM high speed science data bus, causing loss of TTE telemetry packets (Meegan et al. 2009). We therefore limit our analysis to the pre-binned 1.024s CSPEC data within these regions, which are available without data loss, and use additional *Fermi*-LAT LLE data, when available.

High counting rates create deadtime which is automatically corrected for in the exposure value in *Fermi*-GBM FITS files using Equation 4.24 in Knoll (2010). At input count rates above ~ 50 k counts per second (cps) more complex deadtime effects such as pulse pile-up (PPU) can occur (Meegan et al. 2009). PPU occurs when the overlap between electronic pulses in *Fermi*-GBM causes distortions in both the observed spectral shape and intensity (Chaplin et al. 2013; Bhat et al. 2014). This rate was significantly exceeded during the reported *Fermi*-GBM BTIs and cannot be corrected for automatically via the standard method. In order to obtain a full picture of GRB 221009A, we perform PPU-correction within the *Fermi*-GBM BTIs using the method described in Section 3.1.

3.1. Pulse Pile-up Correction

A number of instruments have successfully applied PPU-correction techniques to a wide range of gamma-ray transients (Mazets et al. 1999; Lysenko et al. 2019; Mailyan et al. 2016, 2019). The effects of PPU on *Fermi*-GBM data and its correction have been analytically studied in the work of Chaplin et al. (2013) and correction techniques have been verified through Monte Carlo simulations and lab experiments with radioactive

sources (Bhat et al. 2014). This analytical PPU method successfully achieved spectral fits of *Fermi*-GBM terrestrial gamma-ray flashes that could not have been satisfactorily fit without PPU corrections (Mailyan et al. 2016, 2019). In our work we apply the *Fermi*-GBM PPU-correction technique to the *Fermi*-GBM CSPEC data for GRB 221009A.

The technique parallels that of a normal spectral analysis with a few additional steps to account for the distorted data. We first assume a parameterized photon model and forward fold it through the *Fermi*-GBM detector response matrix (DRM) to obtain a detector count spectrum. The count spectrum is then adjusted for PPU effects using the analytic method of Chaplin et al. (2013) and an assumed count rate. Since the analytical PPU-correction model includes all deadtime effects, the exposure time in the *Fermi*-GBM FITS files needs to be replaced with the observing time to avoid double counting deadtime. The PPU-adjusted count spectrum is then compared to the observed count spectrum. The assumed photon model parameters and count rate are then iteratively adjusted to maximize the likelihood between the PPU-adjusted counts spectrum and the observed counts spectrum.

Unlike for the Cs^{137} and Co^{60} sources used when testing a BGO detector in a lab (Bhat et al. 2014), we do not know the true count rate or spectrum of GRB 221009A. Additionally, there are some residual uncertainties concerning the reliability of the PPU-correction technique at such extreme counting rates. Since our primary goal is to determine the energetics of this GRB we assume a simple Band function throughout the PPU reconstruction process and do not attempt to improve these fits by adding spectral breaks or additional spectral components. We do not take into account uncertainties associated with our non-optimal choice of spectral shape. For reasons which will be discussed in Section 5.5 and Section 7, we consider this technique reliable for determining the total energetics of GRB 221009A and note that our results are consistent with those reported in Frederiks et al. (2023), Ripa et al. (2023), and An et al. (2023).

4. TEMPORAL ANALYSIS

Figure 1 shows the lightcurve of GRB 221009A as seen by *Fermi*-GBM and *Fermi*-LAT with the *Fermi*-GBM BTIs highlighted with gray vertical shaded regions and the *Fermi*-LAT BTI highlighted with a red vertical shaded region. Here we use the revised *Fermi*-LAT BTI region, the details of which can be found in *Fermi*-LAT 2023. The lightcurve is separated into eight dis-

⁵ <https://fermi.gsfc.nasa.gov/ssc/data/analysis/grb221009a.html>

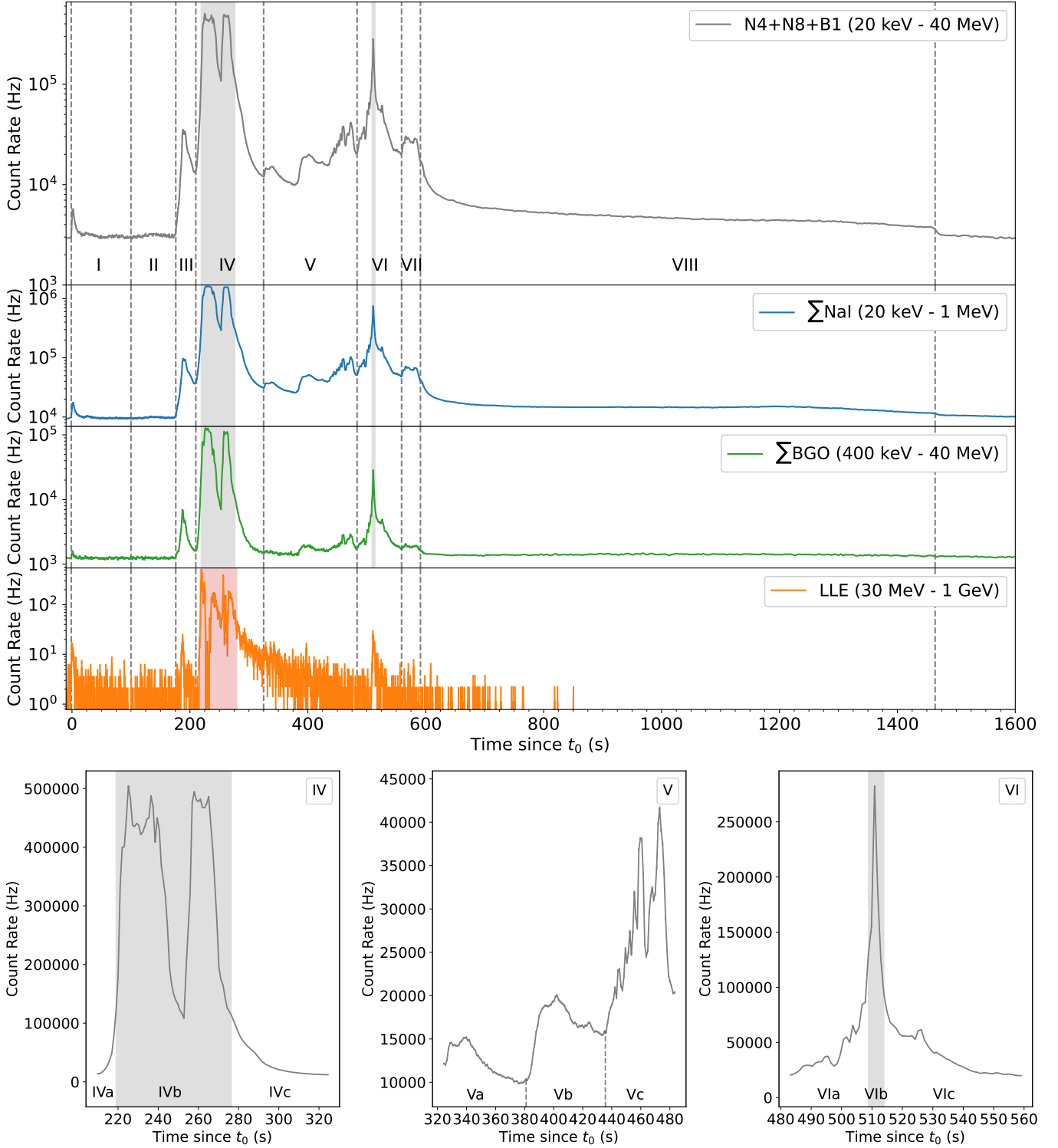


Figure 1. The top plot shows the uncorrected lightcurve of GRB 221009A in the 20 keV to 40 MeV energy range as seen by the three *Fermi*-GBM detectors with the lowest continuous viewing angles. The uncorrected lightcurve is divided into eight time intervals (I-VIII) differentiated by vertical dashed lines. Intervals IV, V, and VI are further subdivided into three sub-intervals shown in the bottom three panels in the same energy range (20 keV to 40 MeV). The NaIs, BGOs, and LLE plots show the uncorrected lightcurve of GRB 221009A in different energy bands. The two gray vertical shaded regions in the *Fermi*-GBM plots denote the BTIs of *Fermi*-GBM ($t_0+219.0-t_0+277.0$ s & $t_0+508.0-t_0+514.0$ s). The red vertical shaded region in the LLE plot denotes the revised BTI of *Fermi*-LAT (t_0+217 to t_0+280 s).

tinct emission intervals, and some sub-intervals, based on its morphology:

- I) The “Triggering Pulse” ($t_0-1\text{ s} - t_0+43\text{ s}$)
- II) The “Quiet Period” ($t_0+121\text{ s} - t_0+164\text{ s}$)
- III) The beginning of the primary emission which we refer to as the “Pre-Main Pulse” ($t_0+177\text{ s} - t_0+210\text{ s}$)
- IV) The “Primary Pulse” which contains the first *Fermi*-GBM BTI ($t_0+210\text{ s} - t_0+324\text{ s}$)
 - IVa) The interval before the first *Fermi*-GBM BTI
 - IVb) The first *Fermi*-GBM BTI region
 - IVc) The interval after the first *Fermi*-GBM BTI
- V) The smooth, then variable “Intra-Pulse Period” ($t_0+326\text{ s} - t_0+483\text{ s}$)
- VI) The “Secondary Pulse” which contains the second *Fermi*-GBM BTI ($t_0+483\text{ s} - t_0+546\text{ s}$)
 - VIa) The interval before the second *Fermi*-GBM BTI
 - VIb) The second *Fermi*-GBM BTI region
 - VIc) The interval after the second *Fermi*-GBM BTI
- VII) The “Final Pulse” ($t_0+546\text{ s} - t_0+597\text{ s}$)
- VIII) The “Afterglow” ($t_0+597\text{ s} - t_0+1467\text{ s}$)

These lightcurve intervals and their corresponding sub-intervals will be referenced throughout this work.

4.1. Periodicity Searches

In light of the recent quasi-periodic oscillation (QPO) study of GRB 211211A reported in Xiao et al. (2022b) and of GRB 910711 and GRB 931101B reported in Chirenti et al. (2023), we performed a QPO search on GRB 221009A using the high time-resolution *Fermi*-GBM TTE data across a wide range of frequencies using two different methods.

We separately searched interval I (the triggering pulse), intervals III+IVa (the beginning of the main emission period before the first *Fermi*-GBM BTI), intervals IVc+V+VIa (the emission between the two *Fermi*-GBM BTIs), and intervals VIc+VII+VIII (the period after the end of the second *Fermi*-GBM BTI). Since the loss of TTE packets during the *Fermi*-GBM BTIs creates artificial structure in the lightcurves, we do not consider these regions in our analysis. Visual inspection of sub-interval Vc suggests potentially interesting variability, thus we also search that segment separately.

We search for QPOs using Fourier-based methods (e.g. van der Klis 1989) at frequencies $\gtrsim 20\text{ Hz}$, where the overall variability of the GRB is relatively unimportant and photon counting noise dominates. We generate periodograms up to 5000 Hz, and look at both linearly and logarithmically binned periodograms. As a threshold for significance, we choose $p < 0.001$ ($\sim 3\sigma$), corrected for the number of frequencies searched. We find no credible QPO detection in any of the segments in the white noise-dominated regime above 20 Hz. In all cases the significance remains far below the threshold corrected for the number of trials.

For frequencies $< 20\text{ Hz}$, we follow the formalism in Hübner et al. (2022) and use a Bayes factor comparing a Gaussian process with a covariance function describing aperiodic red noise variability to a Gaussian process with a covariance function describing a combination of aperiodic red noise variability and a QPO. We modelled all segments individually with the Gaussian process, and refer the reader to Hübner et al. (2022) for more details on the analysis, including prior choices. We find no credible detections in intervals I, III+IVa, or VIc+VII+VIII, and focus our attention on region IVc+V+VIa and its sub-interval Vc, where the variability suggests the possible presence of a low-frequency signal. Indeed, in the model including both aperiodic variability and a QPO signal the posterior probability density for the QPO period is well-constrained to $12.34^{+2.12}_{-1.67}\text{ s}$. The Bayes factor for the two models is,

$$\log(\mathcal{B}) = \log\left(\frac{\mathcal{L}(D|M_1)}{\mathcal{L}(D|M_2)}\right) = 2.21 \quad (1)$$

where M_1 is the model with QPO, M_2 is the model without QPO, and D is a placeholder for the data, in this case the lightcurve. A Bayes factor of 2.21 is considered moderate evidence for a QPO, but we caution the reader that Bayes factors are extremely sensitive to prior choices. A more detailed QPO analysis will be deferred to a future study.

4.2. Minimum Variability Timescale

GRB lightcurves exhibit variability on various time scales. Internal shocks can produce the observed complex temporal structure provided that the source itself is variable. The minimum variability timescale (MVT; Δt_{\min}) is a measure of the shortest coherent variations of the lightcurve (Bhat et al. 2012) and, in turn, can be related to the minimum Lorentz factor of the relativistic shells emitted by the central engine. This measure carries information about the variability timescale of the central engine itself.

Here we use the statistical method described in [Bhat \(2013\)](#) to estimate the MVTs of a GRB using *Fermi*-GBM TTE data. We first identify the prompt emission region and an equal duration of background region. We then derive a differential of each lightcurve and compute the ratio of the variances of the GRB prompt region to that of the background region. This is repeated by varying the bin widths of the lightcurve starting at sub-millisecond values. This ratio, divided by the bin width, is plotted as a function of bin width. At very fine bin widths this ratio falls monotonically with increasing bin width (1/bin width variation) signifying that at fine bin widths the variations in the background and burst regions are statistically identical. In other words, the signal in the burst lightcurve is indistinguishable from Poissonian fluctuations. At some point, as the bin widths increase, the ratio starts increasing with bin width. The point where the correlation between the ratio and bin width change is defined as the minimum variability timescale. We measure the bin width at this valley by fitting it with a quadratic function with the Δt_{\min} being the minimum of the quadratic ([Bhat 2013](#)).

Usually an MVT value is quoted for each burst. However, in the case of GRB 221009A, it is possible to derive Δt_{\min} as a function of time. [Figure 2](#) shows the evolution of Δt_{\min} together with the *Fermi*-GBM NaI lightcurve (8 - 1000 keV). The Δt_{\min} has been shown to be equal to the shortest rise of a lognormal pulse if one tries to fit the entire lightcurve as a superposition of multiple lognormal pulses ([Bhat 2013](#)). As a result, one would expect to see Δt_{\min} occur in the region of the lightcurve with highest variability as can be seen in [Figure 2](#).

During the period affected by PPU, we use the *Fermi*-GBM CTIME data with 64 ms resolution to visually inspect the lightcurve. We clearly identify pulses that have a rise time of one temporal bin. Based on this observation, and the fact that there is an anti-correlation between the count rate and the MVT, we conservatively assume a variability timescale of 0.1 s during the PPU period (see [Section 8](#) for further explanation).

4.3. Duration

The standard duration measure of a GRB (T_{90}) is defined as the temporal interval containing 90% of the total time-integrated photon flux in the 50–300 keV energy range. The standard T_{90} analysis using the *Fermi*-GBM CTIME files without PPU-correction overestimates the duration of GRB 221009A, as the count rate of the brightest portions of the lightcurve are decreased in intensity due to PPU and deadtime effects. To mitigate these effects, we used the PPU-corrected CSPEC data within the two *Fermi*-GBM BTIs. Because

a Band function was assumed in our PPU-correction method (see [Section 3.1](#)), we performed time-integrated fits with a Band function to each of the non-BTI sub-interval shown in [Figure 1](#). We then integrated each fit from 50-300 keV to obtain a PPU-corrected T_{50} and T_{90} measurement. For GRB 221009A, we estimate $T_{50} = 25.6 \pm 1$ s and $T_{90} = 289 \pm 1$ s. The duration $T_{90} = 289$ s is longer than 97.5% of all *Fermi*-GBM GRBs and longer than 96.4% of all long *Fermi*-GBM GRBs based on the classification of [von Kienlin et al. \(2020\)](#). A long GRB (i.e., massive star progenitor) classification is consistent with the discovery of the associated supernova SN 2022xiw ([de Ugarte Postigo et al. 2022a](#); [Maiorano et al. 2022](#); [Fulton et al. 2023](#)).

5. PROMPT EMISSION PHASES

Throughout our spectral analyses, we test a variety of standard spectral models including a power-law (PL), a power-law with an exponential cutoff (COMP), a Band function (Band; [Band et al. 1993](#)), a blackbody (BB), and combinations thereof ([Goldstein et al. 2012](#); [Gruber et al. 2014](#); [Poolakkil et al. 2021](#)). We additionally investigate two more complex spectral models, a double smoothly broken power-law (DSBPL; [Ravasio et al. 2018](#)) and a multicolor blackbody (mBB; [Hou et al. 2018](#)). When performing these spectral analyses, we used the Rmfit version 4.3.2⁷ spectral fitting package and the *Fermi*-GBM Data Tools⁷ Python software package (GDT; [Goldstein et al. 2022](#)). For analyses that could be performed by both programs, results were compared and shown to be consistent.

The desire to investigate more complex spectral models (e.g., DSBPL and mBB) for GRB 221009A resulted in the extension of the GDT functionality to include a new Bayesian Markov Chain (BMC) fitting technique, similar to the *McSpecFit* package described in [Zhang et al. \(2016\)](#). The validity of our BMC fitting technique was tested against the traditional GDT and Rmfit fitting routines using the standard spectral models mentioned previously and was shown to produce consistent results.

[Figure 3](#) shows that the prompt emission of GRB 221009A remained above background for most of its duration in *Fermi*-GBM. The ~ 1200 s of continuous emission means the standard polynomial background estimation method has a higher chance of misrepresenting the true background rate. To mitigate this, we used the orbital background estimation method⁶ for *Fermi*-GBM data presented in [Fitzpatrick et al. \(2011\)](#) which allowed us to better understand the background trend through-

⁶ <https://fermi.gsfc.nasa.gov/ssc/data/analysis/user/>

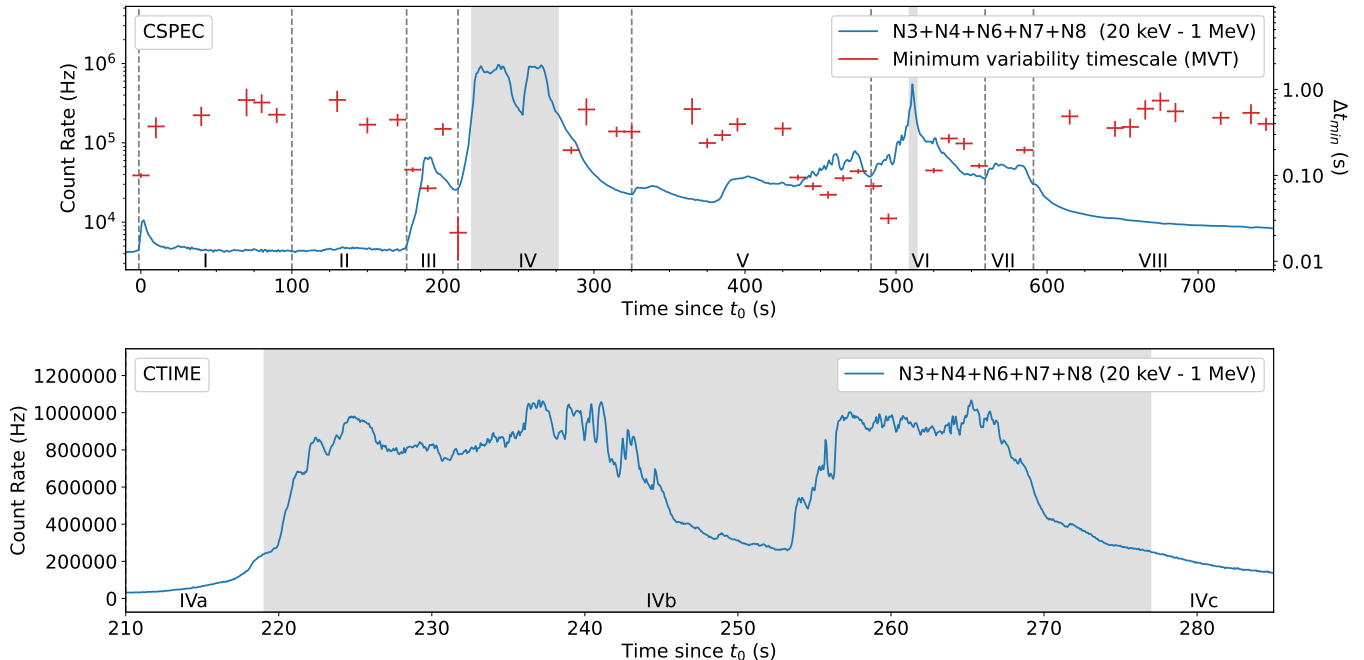


Figure 2. Top: Uncorrected *Fermi*-GBM CSPEC data (1.024s resolution) in the five NaI detectors with viewing angles to GRB 221009A below 60° at trigger time and the evolution of the minimum variability timescale (MVT; Δt_{\min}) obtained from the *Fermi*-GBM non-BTI regions. The MVT ranges from ~ 0.01 s to ~ 1 s. The decreasing MVT indicates more variability around regions with higher count rates. Bottom: Uncorrected *Fermi*-GBM CTIME data (0.064 s resolution) for the same two NaI detectors during the first *Fermi*-GBM BTI region.

out the prompt emission phase. We performed a standard polynomial fitting technique to the lightcurve over a known background region on either side of the emission episode while adjusting the polynomial fit to best match the orbital background estimate (see Figure 3). The χ^2_ν fit statistic for our polynomial fitting technique across all 128 CSPEC energy channels is shown at the bottom of Figure 3. For the LLE data we used the standard polynomial fitting method with polynomial order 2 and background selection regions from $t_0 - 200$ s to $t_0 - 2$ s and from $t_0 + 550$ s to $t_0 + 560$ s. Due to the exceptionally long duration of this event, multiple detector response matrices DRMs for intervals spanning the burst duration were generated via the *Fermi*-GBM Response Generator⁷. Both the polynomial background estimate and these DRMs were used throughout our spectral analyses.

All spectral fits discussed in this section correspond to the lightcurve intervals and sub-intervals shown in Figure 1 and their fit parameters can be found in Table 1. The fit statistics quoted in Table 1 are higher than expected. We attribute this to our coarse time resolution of our spectral fits. The time intervals used are likely not well fit because the spectral evolution evolves on a very

short time scale and produces time-integrated shapes that significantly deviate from the time-resolved shape.

5.1. Pre-Trigger Interval

Using the *Swift*-XRT localization of GRB 221009A and *Fermi*'s orbital location, we find the GRB was first visible to *Fermi*-GBM ~ 2111 s before t_0 . We used the *Fermi*-GBM **targeted search**, an offline search algorithm designed to find subthreshold short GRBs in *Fermi*-GBM data, to search for emission prior to the *Fermi*-GBM trigger time (Blackburn et al. 2015; Goldstein et al. 2016). No such emission was found. Using the **targeted search** spectral templates representative of spectrally-hard and “normal” GRBs, we set 3σ flux upper limits over this pre-trigger interval at 5.1×10^{-8} erg cm $^{-2}$ s $^{-1}$ and 8.0×10^{-8} erg cm $^{-2}$ s $^{-1}$, respectively, for the 1-s timescale in the 10 keV to 1 MeV energy range. Using the redshift of GRB 221009A, we limit the isotropic luminosity of pre-trigger emission to $L_{\text{iso}} < 7.1 \times 10^{48}$ erg s $^{-1}$ and $L_{\text{iso}} < 7.5 \times 10^{48}$ erg s $^{-1}$, respectively.

5.2. Triggering Pulse

The triggering pulse (Figure 1, region I) was analyzed using a combination of *Fermi*-GBM CSPEC and *Fermi*-LAT LLE data. Figure 4 shows high-energy LLE photons arriving ~ 1.5 s earlier than lower-energy NaI and

⁷ <https://fermi.gsfc.nasa.gov/ssc/data/analysis/gbm/>

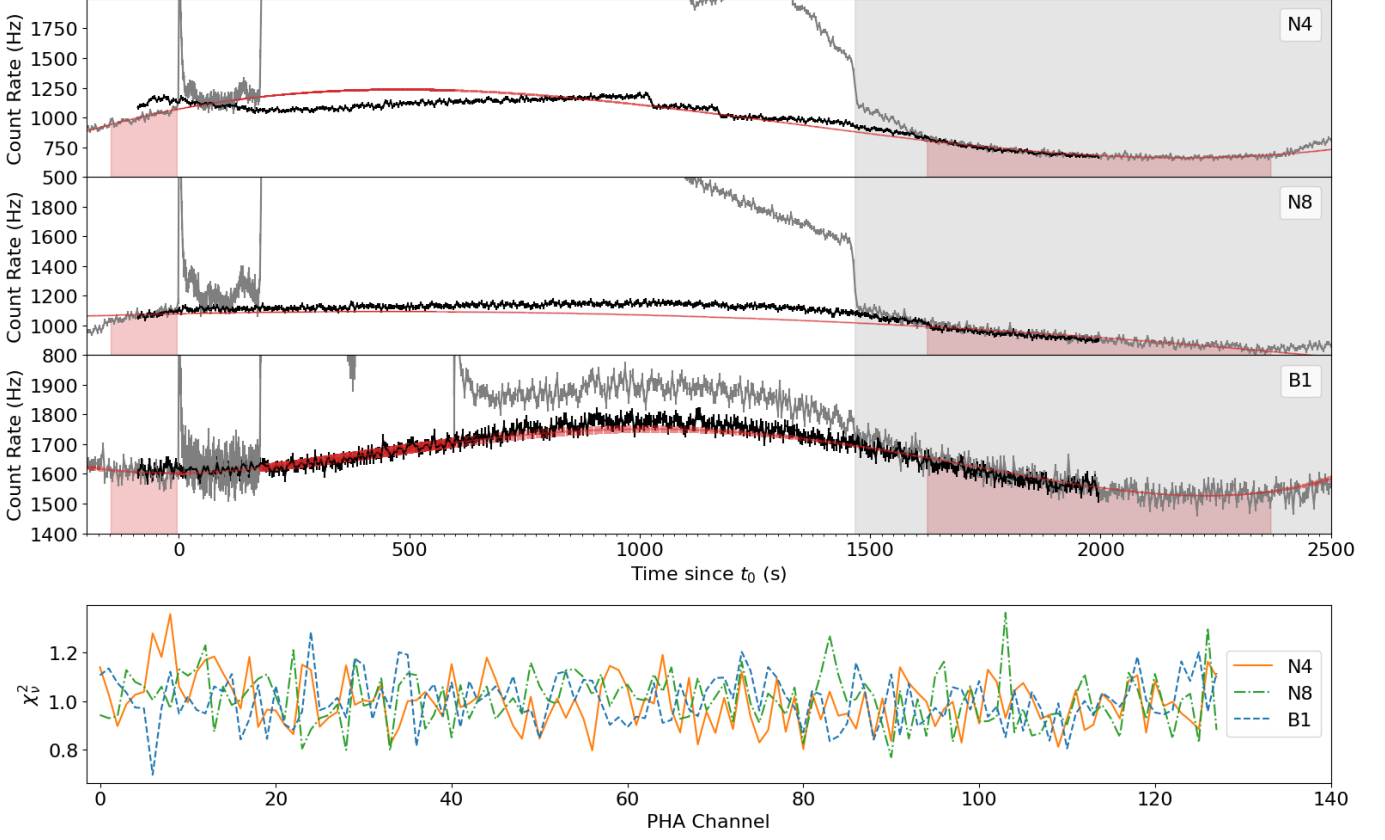


Figure 3. Top: The gray lightcurves are of GRB 221009A as seen in *Fermi*-GBM detectors N4, N8, and B1. The black lightcurves are the averaged background from 30 orbits before and 30 orbits after the *Fermi*-GBM trigger time, when *Fermi* was in the same orbital location and orientation. The red shaded regions mark the background selection regions used for polynomial fitting. The red lines are the 4th order polynomial fits to the GRB 221009A lightcurves that best match the averaged orbital background. The gray shaded area on the right marks the time when the GRB was occulted by the Earth. The discrepancy at $t = 0$ between the gray GRB lightcurve and the black averaged background lightcurve in panel N4 is due to the propagation of the Earth occultation steps in the orbital fits (as seen around 1100s and 1200s). The polynomial order and background range can be found in Section 5. Bottom: The χ^2_ν fits of the polynomial fit to the GRB 221009A lightcurve in each of the 128 CSPEC energy bins for each detector.

BGO photons, with a lag that increases as energy decreases. Although distinct, this behavior is not unique as it has been previously observed in the initial pulse of GRB 130427A as well (Ackermann et al. 2014; Preece et al. 1998).

The first interval, referred to as sub-region Ia in Table 1, spans the first 8 seconds of region I and was best fit by a COMP function with low-energy photon index $\alpha = -1.69$ and $E_{peak} = 4$ MeV. We compared these values to the corresponding time-integrated parameter distributions in the *Fermi*-GBM 10-year Spectral Catalog (Poolakkil et al. 2021) and find that only 0.26% of bursts (6/2295) have $\alpha < -1.69$ and 0.23% have E_{peak} above 4 MeV (3/1311). While we note that this is not a direct comparison as this fit is neither time-integrated for a whole burst nor a 1.024s peak-flux interval, the α and E_{peak} values are both outliers at $\sim 3\sigma$ significance.

Similar to the study performed by Zhang et al. (2018) for the extraordinarily bright GRB 160625B, we test whether the initial pulse of GRB 221009A is consistent with a quasi-thermal origin by fitting the time interval from $t_0 - 1.3$ s to $t_0 + 42.9$ s with the mBB function. As shown in Table 1, this yields a kT_{min} of ~ 1.6 keV, and a kT_{max} of ~ 5 MeV. Both counts and model spectra for this fit are shown in Figure 4. kT_{min} and kT_{max} can be converted into peak (or “break”) energies with the relation $E_{b,1} \sim 3kT_{min}$ (or $E_{b,2} \sim 3kT_{max}$) (Hou et al. 2018). This yields $E_{b,1} \approx 4.8$ keV and $E_{b,2} \approx 15$ MeV. The *Fermi*-GBM +LLE energy range has lower and upper limits of ~ 20 keV and ~ 300 MeV, respectively for our analysis of GRB 221009A. This means we were only able to confidently constrain $E_{b,2}$ due to the addition of LLE data. The $E_{b,1}$ value from our analysis only tells us that the power-law index in the mBB fit extends below the *Fermi*-GBM energy range. The mBB model from

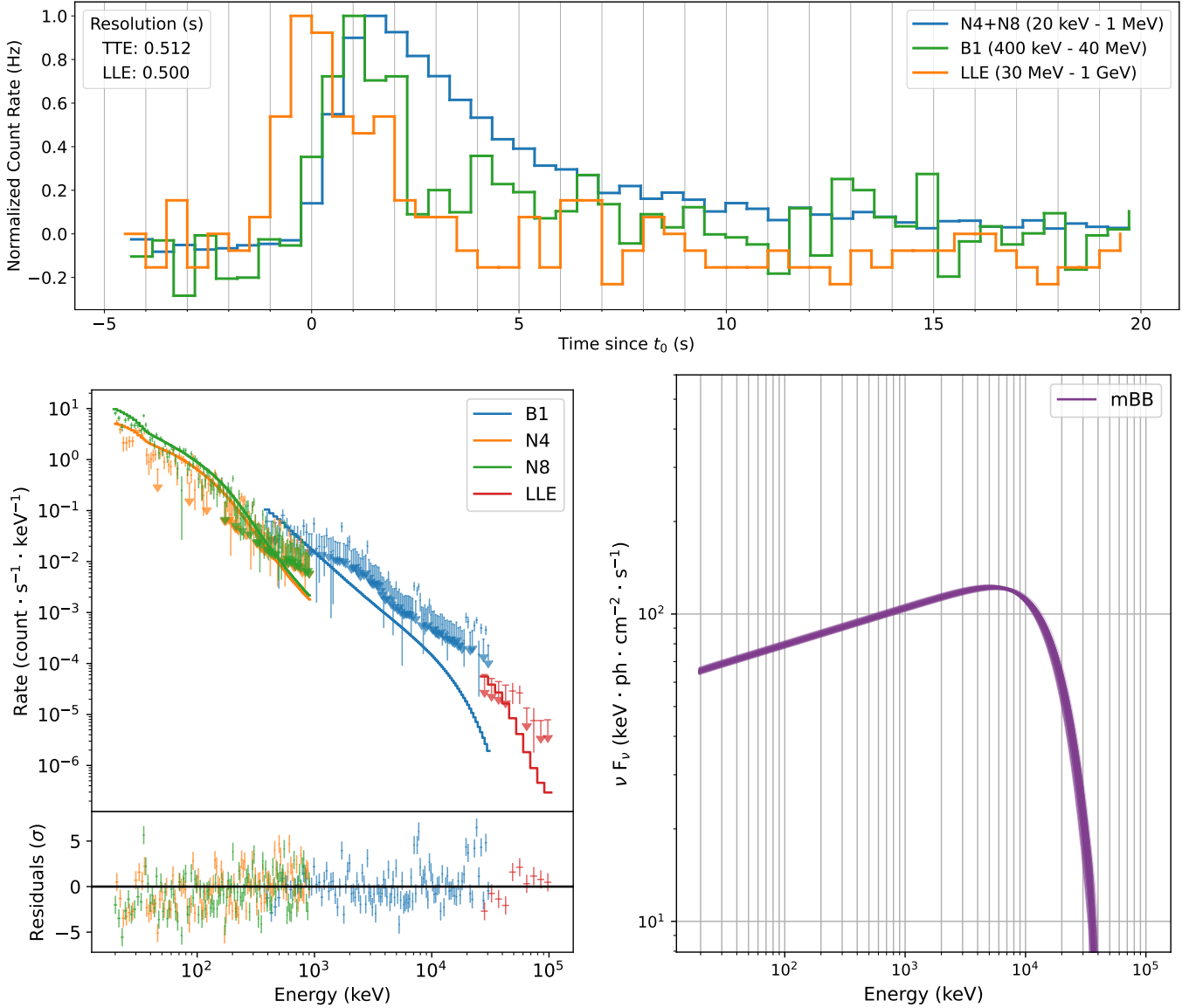


Figure 4. Top: Background subtracted and normalized lightcurves of 0.512s binned *Fermi*-GBM TTE data and 1.0s binned LLE data for the triggering pulse with the higher-energy photons arriving prior to the lower-energy photons. Bottom: The fitted counts spectrum (left) and model spectrum (right) for the multicolor blackbody function fitted to the triggering pulse.

Hou et al. 2018 gives a direct measure of luminosity. The fit value of $14.5^{+0.5}_{-0.6}$ with the scale $L_{39}/D_{L,10\text{kpc}}^2$ gives a corresponding value of $7.5^{+0.3}_{-0.3} \times 10^{49}$ erg s $^{-1}$ at $z=0.151$ ($D_L = 724$ Mpc). These fit parameters are significantly different than those of GRB 160625B (Zhang et al. 2018). Additionally, we fit region I with a COMP model and a BB+COMP model, both of which produced comparably good fit statistics (see Table 1). The BB+COMP spectral fit is shown in the top left of Figure 5.

Comparison of the signal against the orbital-averaged background (Figure 3) suggests a near full return to background around t_0+100 s, followed by weak signal

at t_0+121 s (Figure 1, region II) before the onset of the main pulse. This pulse is unique due to its isolation in time, outlier spectral parameter values, and LLE photons leading the *Fermi*-GBM data, possibly pointing to a distinct physical origin.

5.3. Quiet Period

We define the quiet period (Figure 1, interval II) as the time between the triggering pulse and the onset of the main prompt emission phase. This region appears to have no emission, but careful analysis reveals detectable low-level emission during most of this time (see NaI

Model (region)	Time Range	Model Components				C_{stat}/DoF	LLE Used?
COMP (Ia)	-0.003	α		E_{peak}	485/343	Y	
	8.576	-1.69 ± 0.01		3980 ± 366			
COMP (I)	-1.343	α		E_{peak}	497/340	Y	
	42.881	-1.73 ± 0.02		10440 ± 1900			
BB+COMP (I)	-1.343	kT	α	E_{peak}	494/338	Y	
	42.881	5.23 ± 2.37	-1.69 ± 0.03	9767 ± 1570			
mBB (I)	-1.343	K	kT _{min}	m	kT _{max}	487/379	Y
	42.881	$14.5^{+0.5}_{-0.6}$	$1.62^{+0.20}_{-0.34}$	$-0.854^{+0.009}_{-0.011}$	5000^{+600}_{-400}		
BB+COMP (II)	121.219	kT		α	E_{peak}	2169/334	Y
	164.228	19.27 ± 1.66		-0.4 ± 0.2	5722 ± 564		
Band (III)	176.516	α		E_{peak}	β	2130/338	Y
	210.309	-1.158 ± 0.003		1023 ± 12	-3.28 ± 0.04		
Band (IVa)	210.309	α		E_{peak}	β	1741/352	Y*
	219.525	-1.159 ± 0.003		3664 ± 47	-2.70 ± 0.03		
Band+PL (IVc)	277.894	Index	α	E_{peak}	β	5707/336	Y*
	323.975	-1.916 ± 0.009	-1.583 ± 0.001	1387 ± 9	-3.77 ± 0.01		
Band (Va)	326.023	α		E_{peak}	β	3801/335	Y
	381.023	-1.80 ± 0.01		69 ± 1	-2.24 ± 0.01		
Band (Vb)	381.023	α		E_{peak}	β	4217/335	Y
	435.546	-1.658 ± 0.003		520 ± 11	-2.98 ± 0.02		
Band (Vc)	433.546	α		E_{peak}	β	3605/318	
	482.699	-1.610 ± 0.003		527 ± 9	-2.46 ± 0.02		
Band (VIa)	482.699	α		E_{peak}	β	1992/317	
	508.299	-1.512 ± 0.003		564 ± 8	-2.55 ± 0.02		
Band (VIc)	515.467	α		E_{peak}	β	3677/335	Y
	546.188	-1.484 ± 0.002		1133 ± 11	-3.53 ± 0.04		
Band (VII)	546.188	α		E_{peak}	β	3111/318	
	597.389	-1.648 ± 0.004		280 ± 6	-2.23 ± 0.01		

Table 1. The best fitting spectral functions for the lightcurve intervals and sub-intervals described in Section 4 and presented in Section 5. “Y*” is used to denote regions where the *Fermi*-LAT LLE data spans a shorter time interval than the *Fermi*-GBM CSPEC data due to the differing *Fermi*-LAT and *Fermi*-GBM BTI regions. α is the low-energy photon index, β is the high-energy photon index, and Index refers to the additional PL component index. For the mBB model, m is the shape parameter described in Hou et al. 2018 and K is defined as $L_{39}/D_{L,10\text{kpc}}^2$, where L is the luminosity in the rest frame in units of 10^{39} erg s^{-1} and D_L is the luminosity distance in units of 10 kpc. All values of E_{peak} and kT are in keV. Interval VIII (the afterglow) is not included in this table.

panels of Figure 3). We associate the flux to GRB 221009A through consistent localizations of the low-level flux to the location of the GRB. The t_0+121 s to t_0+164 s interval, just before the onset of the main prompt emission, is best fit by a COMP function with an additional BB component peaking at ~ 19 keV. The model spectrum for this fit is shown in the top left panel of Figure 5.

5.4. Pre-Main Pulse

The bulk of the main emission episode begins at t_0+176 s with a subdominant pulse from t_0+176 s to

t_0+210 s (Figure 1, interval III). Taken by itself, this would be one of the brightest GRBs in the *Fermi*-GBM sample in terms of peak flux. Although part of the main pulse, we analyzed this pulse separately because it is clearly distinct from the following bright main emission and is the last contiguous emission interval before the onset of *Fermi*-GBM data issues. This interval is best fit by a Band function, the parameters of this fit can be found in Table 1.

5.5. Primary Pulse

We define the main pulse (Figure 1, interval IV) as the region between t_0+210 s to t_0+324 s. The bulk of the main emission occurred during the first *Fermi*-GBM BTI, during which both *Fermi*-GBM and *Fermi*-LAT experienced data issues⁵. Due to these data issues we divide this interval into three sub-intervals, before (IVa), during (IVb), and after (IVc) the first *Fermi*-GBM BTI (sub-intervals shown in Figure 1). Although the *Fermi*-LAT BTI falls into sub-intervals IVa and IVc, we do not attempt to correct or use any *Fermi*-LAT LLE data within the published *Fermi*-LAT BTIs.

Region IVa begins before the onset of *Fermi*-GBM data issues and is best fit by a Band function that peaks in energy (E_{peak}) around 3.7 MeV. Region IVc begins after the *Fermi*-GBM data issues have subsided and is best fit by a Band function with an additional PL component, extending the fit out to higher energies. The Band function in this region peaks in energy (E_{peak}) at ~ 1.4 MeV. The additional PL of this fit has photon index of ~ -1.9 , which is consistent with the canonical PL value of $\Gamma = -2$ expected from the high-energy component of the electron synchrotron spectrum for both the slow- and fast- cooling regime, for an assumed power-law electron energy distribution of $p = 2$ (Granot & Sari 2002). This spectral component is consistent with the emergence of the early afterglow, over which the rest of the prompt emission is superimposed, similar to behaviour observed in GRB 190114C (Ajello et al. 2020). The model spectrum for this fit can be found in Figure 5.

Region IVb is the time of the first *Fermi*-GBM BTI. As mentioned previously, the TTE data within the *Fermi*-GBM BTIs is irrecoverable. Although the CSPEC data experienced PPU and deadtime effects, the data are corrected via the method described in Section 3.1. Within this BTI the lightcurve consists of two distinct peaks. Our assumption of a Band function for the underlying spectral shape produces adequate fits throughout. However, we observe varying goodness-of-fit measures that coincide with the times of these two peaks. Examples of PPU-corrected counts spectra during these peaks are shown in Figure 5. Due to the current limitations of our PPU-correction technique described in Section 3.1 we are unable to discern whether these variations are due to spectrottemporal evolution in the data or uncorrected PPU effects. Spectral fit parameters are not reported for fits within the *Fermi*-GBM BTI regions because the purpose of these fits is to determine the energetics of GRB 221009A. Further analysis is needed to determine the reliability of our PPU-correction technique for spectral modeling of this GRB with additional spectral models being considered.

5.6. Intra-Pulse Period

The intra-pulse period (region V) consists of three distinct pulses in sub-regions Va, Vb, and Vc as shown in Figure 1. We fit each pulse independently, using LLE data when available. All three pulses were best fit with Band functions. Although the pulses in sub-intervals Va and Vb have similar temporal structures and MVTs (see Figure 2), the pulse in sub-interval Va peaks at a much lower energy ($E_{\text{peak}} \sim 69$ keV and $E_{\text{peak}} \sim 520$ keV, respectively). The pulse in sub-interval Vc occurs right before the onset of the second high intensity region and has a MVT and temporal structure that clearly differs from the first two pulses. Despite these differences, this pulse peaks at an energy similar to sub-interval Vb ($E_{\text{peak}} \sim 527$ keV).

5.7. Secondary Pulse

Due to the secondary pulse (Figure 1, region VI) containing the second *Fermi*-GBM BTI within it, we separate this region into three sub-regions (VIa, VIb, and VIc). As with the primary pulse, sub-regions VIa and VIc were not affected by *Fermi*-GBM data issues so standard spectral analyses could be performed.

Although the first (VIa) and last (VIc) sub-regions were both best fit by a Band function with comparable low-energy photon indices α of ~ -1.5 and high-energy photon indices β values of ~ -2.5 and ~ -3.5 respectively, they differed largely in peak energy measurements. Sub-region VIa peaked in energy at ~ 564 keV while sub-regions VIc had a measured E_{peak} of ~ 1.1 MeV. Such a difference is expected as sub-regions VIc directly followed a period of reenergization.

Sub-region VIb is bound by the second *Fermi*-GBM BTI interval and contains only 7 time bins of *Fermi*-GBM CSPEC data. Within this time the data contains only a single bright spike. We follow the same procedure as Section 5.5 and as described in Section 3.1. The resulting spectral fits, residuals, and fit statistics adequately constrain the data in every time bin, but produce more residuals near the peak, as expected (Figure 5). As discussed in Section 5.5, we do not report any spectral fit parameters within this region in Table 1.

5.8. Final Pulse

The final pulse (Figure 1, region VII) occurs from t_0+560 s to t_0+597 s. We define the end time of this region arbitrarily as it inevitably merges with the long, smooth decay phase marked as region VIII in Figure 1. This pulse was best fit by a Band function, the parameters of which can be found in Table 1.

6. AFTERGLOW

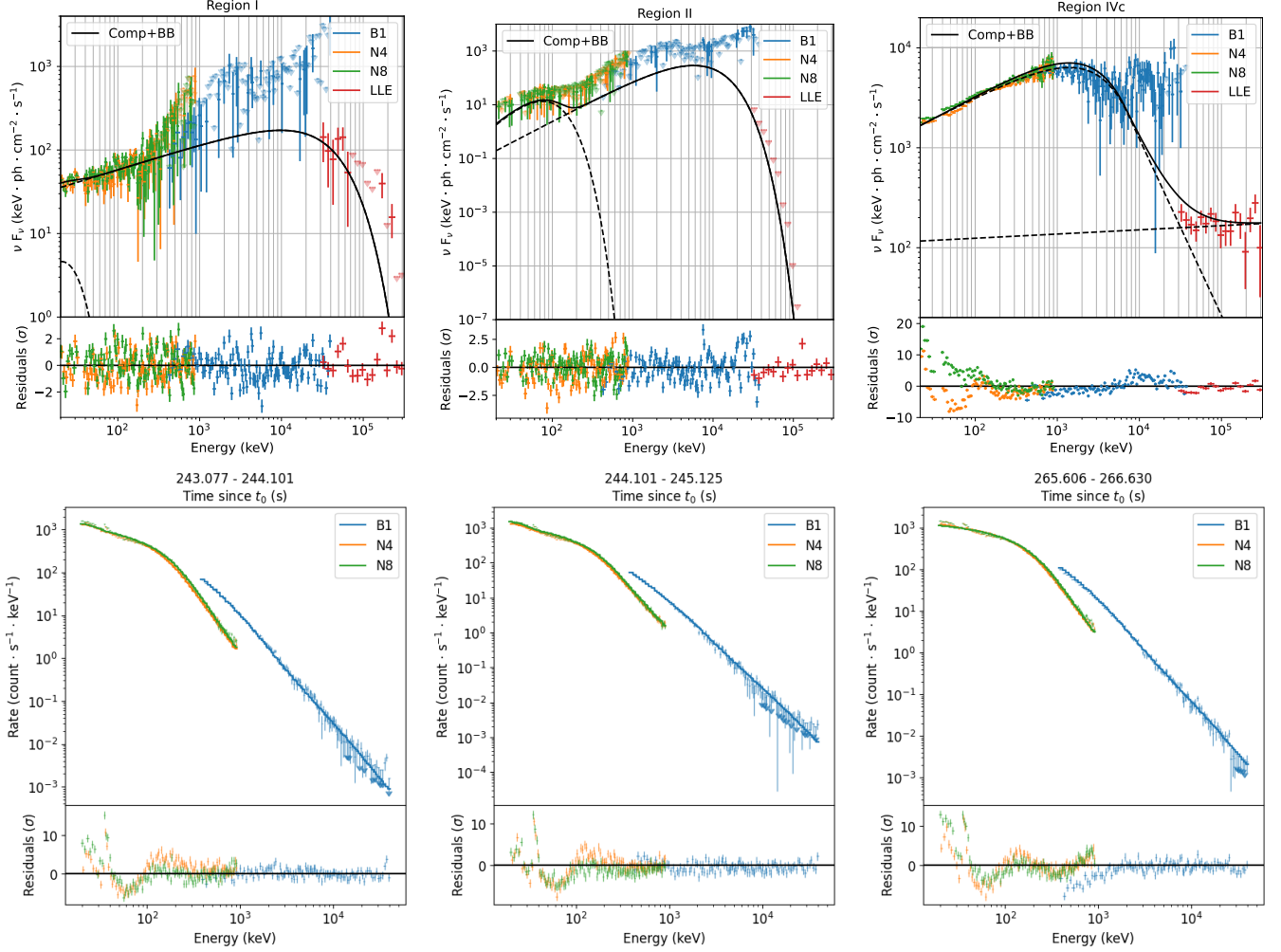


Figure 5. Top: The $\nu F(\nu)$ spectra for region I best fit by a COMP+BB (left), the $\nu F(\nu)$ spectra for region II best fit by a COMP+BB (middle) and the $\nu F(\nu)$ spectra for sub-region IVc best fit by a Band+PL (right). Bottom: Average examples of counts spectrum plots at during the *Fermi*-GBM BTI region of sub-interval IVb (Left: $t_0+243.1$ s, Middle: $t_0+244.1$ s, Right: $t_0+265.6$ s) achieved using the PPU-correction method described in Section 3.1. The spike at 511 keV is ignored during the fitting process and does not affect the fit statistic.

In the case of some GRBs the afterglow is so bright it can contribute detectable flux in the *Fermi*-GBM band pass (Giblin et al. 1999; Connaughton 2002). As seen in GRB 190114C and discussed in Section 5.5, this afterglow flux can also overlap with the highly variable prompt emission. For GRB 221009A, the last discernible pulse (region VII) peaks around t_0+575 s and is followed by a long, smooth decay period (region VIII). This decay period having no appreciable variability (see Figure 2) is consistent with an afterglow origin. We define the end of this period to be t_0+1460 s, the time when GRB 221009A is occulted by Earth for *Fermi*.

We temporally bin the lightcurve from t_0+510 s (small bump in region VIc) to the end of region VIII, requiring a signal to noise ratio of 80 to ensure an adequate amount of signal. We then fit the spectrum in each re-

sulting interval with a Band function. Next, we extrapolated the spectrum down to 10 keV (Figure 6, blue) for comparison with *Swift*-XRT (Williams et al. 2023).

The first possibility constrain the peak of the afterglow, we fit the lightcurve after the last bright pulse (VI) using two prompt emission lightcurve pulses with Norris et al. (2005) models (Figure 6, green lines) and the afterglow region with a broken power-law (Figure 6, yellow line). The gamma-ray afterglow lightcurve will rise like a power law of index 3 (ISM) or 1/2 (wind), then decay as a power law (different indices for rising are possible depending on the ordering of the characteristic frequencies). We only detect the late decay and the peak of the afterglow is hidden under prompt emission components. The broken power-law (Figure 6, yellow dots) peaks at $t_{peak}^{ag,ISM} \gtrsim t_{ref} + (140 \pm 2)$ s and

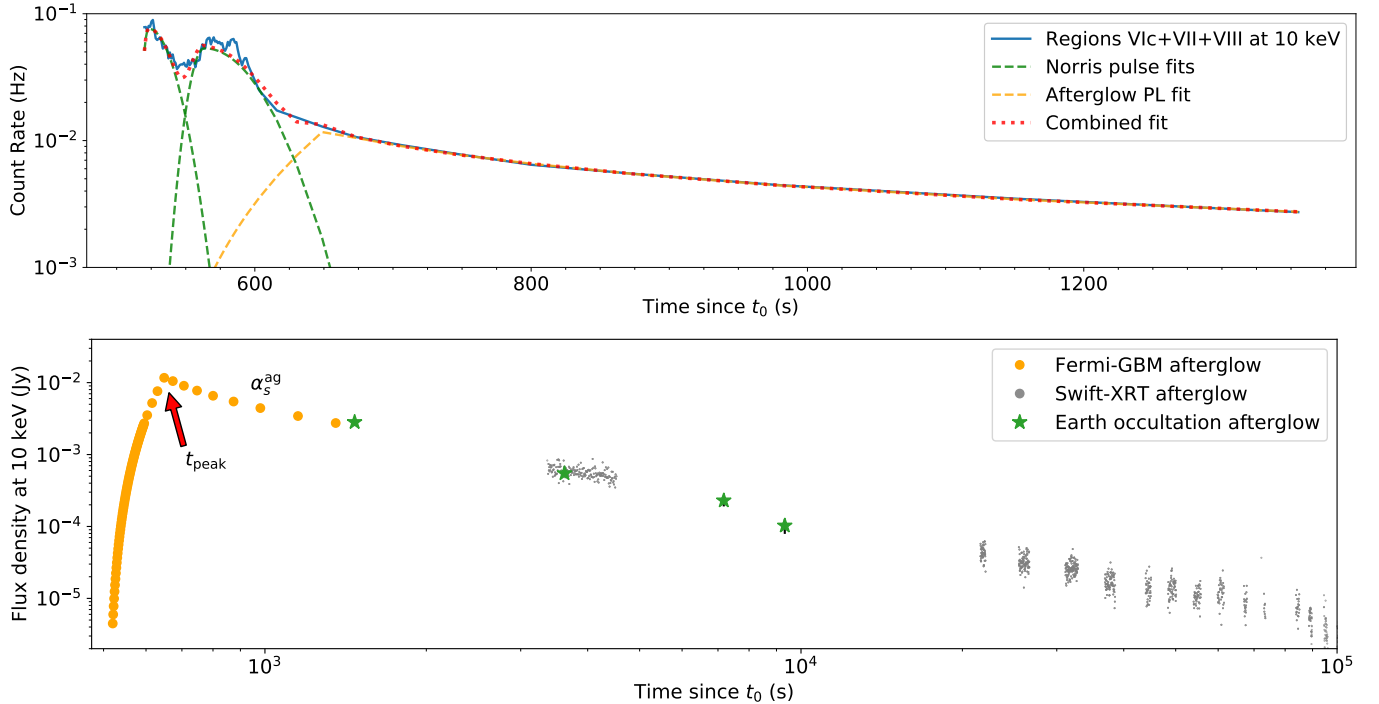


Figure 6. Top: The lightcurve of GRB 221009A in regions VIc, VII, and VIII after fitting the spectra with Band function and extrapolating down to 10 keV. The green dashed lines show Norris function fits to the prompt emission phase and the yellow dashed line shows a broken power law fit to the afterglow phase, by fixing the low energy slope to 3. Bottom: The flux density lightcurve of the afterglow (yellow dots) after removing the prompt emission flux from the Norris function pulses. Flux measurements with the Earth occultation technique are also shown by green stars and the gray points mark the *Swift*-XRT observations.

$t_{peak}^{ag,wind} \gtrsim t_{ref} + (120 \pm 6)s$ with a decay slope of $\alpha_{decay}^{ag} = -0.82 \pm 0.03$ ($t_{ref} = 510 s$). The slope is relatively shallow compared to normal afterglow decay. We tentatively identify t_{peak} as the peak of onset of the solely-afterglow emission and assume the true afterglow peak is overwhelmed by the prompt emission.

Additionally, the slope (α_s^{ag}) of the following afterglow region resembles a plateau phase with mean index $\bar{\alpha}_s^{ag} = -0.6$ and standard deviation $\sigma_{\alpha_s^{ag}} = 0.4$ (Grupe et al. 2013). The later emission ($t > t_0 + 1400 s$) *Swift*-XRT slope of $\alpha_s = -1.514 \pm 0.003^6$ agrees with the expected value of the afterglow ($\bar{\alpha}_s = -1.5$, $\sigma_{\alpha_s} = 0.6$; Grupe et al. 2013).

We obtain different constrain for the peak of the afterglow by extrapolating the smooth emission of phase VIII back in time. We fixed the afterglow lightcurve decay index to our measured α_{decay}^{ag} value, set our reference time to the start of the bright phase at $t_{ref} = t_0 + 175 s$. We use $\alpha_{rise}^{ag} = 3$ because it gives the tightest constraints on the peak time. Requiring that the extrapolated afterglow flux not exceed the prompt emission flux, we place a limit of $t_{peak}^{ag,2} \gtrsim t_{ref} + 105 s$.

⁶ https://www.swift.ac.uk/xrt_live_cat/01126853/

Fermi-GBM can also measure source fluxes using an Earth occultation technique, modeling the change in count rate when a source of interest goes behind the Earth or emerges from behind the Earth (Wilson-Hodge et al. 2012). Using the known *Swift*-XRT sky localization for GRB 221009A, Earth occultation times were first estimated for the time of 50% transmission at 100 keV. A 240 s data window surrounding each occultation step was fitted using a model comprised of a quadratic background and source terms; in this case for GRB 221009A and Cygnus X-1. Independent fits were performed for each energy channel and each detector viewing GRB 221009A within 60 degrees from the detector normal. The source terms consist of an energy dependent model of the atmospheric transmission convolved with the detector response and an assumed spectral model. Two fixed spectral models were tested, a single power-law with a photon index of -2, and a Band function with $\alpha = -0.85$, $\beta = -2.0$, and $E_{peak} = 21.0 keV$ based on the afterglow analysis. Because each energy channel is fitted independently, these models only apply across a single *Fermi*-GBM CTIME or combined set of *Fermi*-GBM CSPEC channels, so results between the two models were consistent. The four Earth occultation steps with excesses above background

starting 1470s after the trigger are shown in Figure 6 as green stars. The afterglow fluxes estimated from the Earth occultation steps are consistent with the temporal decay observed by *Swift*-XRT.

The Earth occultation analysis for GRB 221009A differs slightly from that described in Wilson-Hodge et al. (2012) because the usual focus of the *Fermi*-GBM occultation technique is on the study of longer-term variations (days to years) rather than individual steps. Data filtering, normally used to reject highly variable backgrounds, was omitted for these fits because the time-interval of interest was getting rejected due to the brightness of GRB 221009A. Only Cygnus X-1, the brightest potentially interfering source, was fitted within the time windows rather than the full catalog of flaring sources in Wilson-Hodge et al. (2012) to avoid rejecting the data of interest.

7. ENERGETICS

In order to calculate burst energetics the PPU-corrected data within the two *Fermi*-GBM BTI regions must be used. As was done with the T_{90} analysis, all non-BTI regions shown in Figure 1 were also fit with a Band function. For intervals where a Band function is not the preferred spectral form, we find it still produces an adequate fit and therefore introduces negligible errors in our results.

We derive the total isotropic equivalent energy ($E_{\gamma,iso}$) in the 1-10,000 keV range from the fluences in the individual time intervals from $t_0-2.7$ s to $t_0+1449.5$ s and perform k-corrections in all intervals. We find the total Fluence = $(9.47 \pm 0.07) \times 10^{-2}$ erg cm $^{-2}$ and $E_{\gamma,iso} = (1.01 \pm 0.007) \times 10^{55}$ erg. Assuming an opening angle of 2 degrees (Negro et al. 2023), the beaming corrected energy is $E_{\gamma} = 6.1 \times 10^{51} (\theta_j/2)^2$ erg. We obtain the isotropic-equivalent luminosity, by integrating the spectrum in the $t_0+230.8$ s to $t_0+231.8$ s interval. The energy flux here is $F = (8.48 \pm 0.06) \times 10^{-2}$ erg s $^{-1}$ cm $^{-2}$. After k-correction, we find the 1s peak luminosity to be $L_{\gamma,iso} = (9.91 \pm 0.06) \times 10^{53}$ erg s $^{-1}$. An event with such a high $L_{\gamma,iso}$ value is unlikely to be produced by a magnetar. These values are consistent with those independently produced by Frederiks et al. (2023), Ripa et al. (2023), and An et al. (2023) which demonstrate the validity of the *Fermi*-GBM PPU-correction technique for this GRB.

Figure 7 places the isotropic energy and luminosity into context with a broad sample of *Fermi*-GBM and *Fermi*-LAT bursts with known redshift through 2017 (Abbott et al. 2017), with updated spectral measures from Poolakkil et al. (2021). GRB 221009A stands alone. It is the highest E_{iso} in the *Fermi*-GBM sam-

ple, and with no higher claim existing in the literature, it is the brightest E_{iso} ever recorded for a GRB. It is four orders of magnitude higher than GRBs seen at comparable redshifts and is an order of magnitude greater than the ‘‘Nearby Ordinary Monster’’ GRB 130427A making GRB 221009A a nearerby extraordinary monster. In L_{iso} , only GRB 160625B is marginally higher; however, effects due to PPU and calibration issues caused by the geometry of incident photons with respect to *Fermi* make this our most limited measure.

8. DISCUSSION

8.1. Shock Breakout

Just as with shock breakout and shock interaction for core-collapse supernovae, if the early emission is thermal, it can be used to probe characteristics of the progenitor and its immediate surroundings as well as the structure of the outflow. In the context of gamma-ray bursts, thermal emission can probe the progenitor-star photosphere (which is set by the mass loss and stellar radius), inhomogeneities of the mass-loss and structure of the jet, and its cocoon. For this paper, we focus on more fundamental aspects behind a thermal component to determine whether it is a reasonable explanation of the observed emission, deferring a detailed comparison of the data to models for a later paper.

If we assume the observed triggering emission is produced by the Lorentz-boosted thermal emission of shock breakout, the limits and shape of the emission can be used to constrain the properties of the shock as it emerges from the star. In the strong shock limit for a highly-relativistic gas, the pressure of the shock (P_{shock}) is,

$$P_{shock} \approx \Gamma^2 \rho_{CSM} c^2 \quad (2)$$

where Γ is the Lorentz factor, ρ_{CSM} is the density in the region of shock breakout (in the wind of the massive star), and c is the speed of light. Assuming the pressure is radiation-dominated, the corresponding temperature (T_{shock}) of the emitting gas in the gas comoving frame is,

$$T_{shock} \approx 1.9(\Gamma/100)^{0.5} (\rho_{CSM}/10^{-10} \text{ g cm}^{-3})^{0.25} \text{ keV} \quad (3)$$

and the corresponding peak energy of the emitted photons (ν_{peak}) in the observer frame is,

$$\nu_{peak} \approx 1(\Gamma/100)^{1.5} (\rho_{CSM}/10^{-10} \text{ g cm}^{-3})^{0.25} \text{ MeV} \quad (4)$$

In the thermal shock breakout paradigm, the broad range and relatively flat spectra for the prompt emission

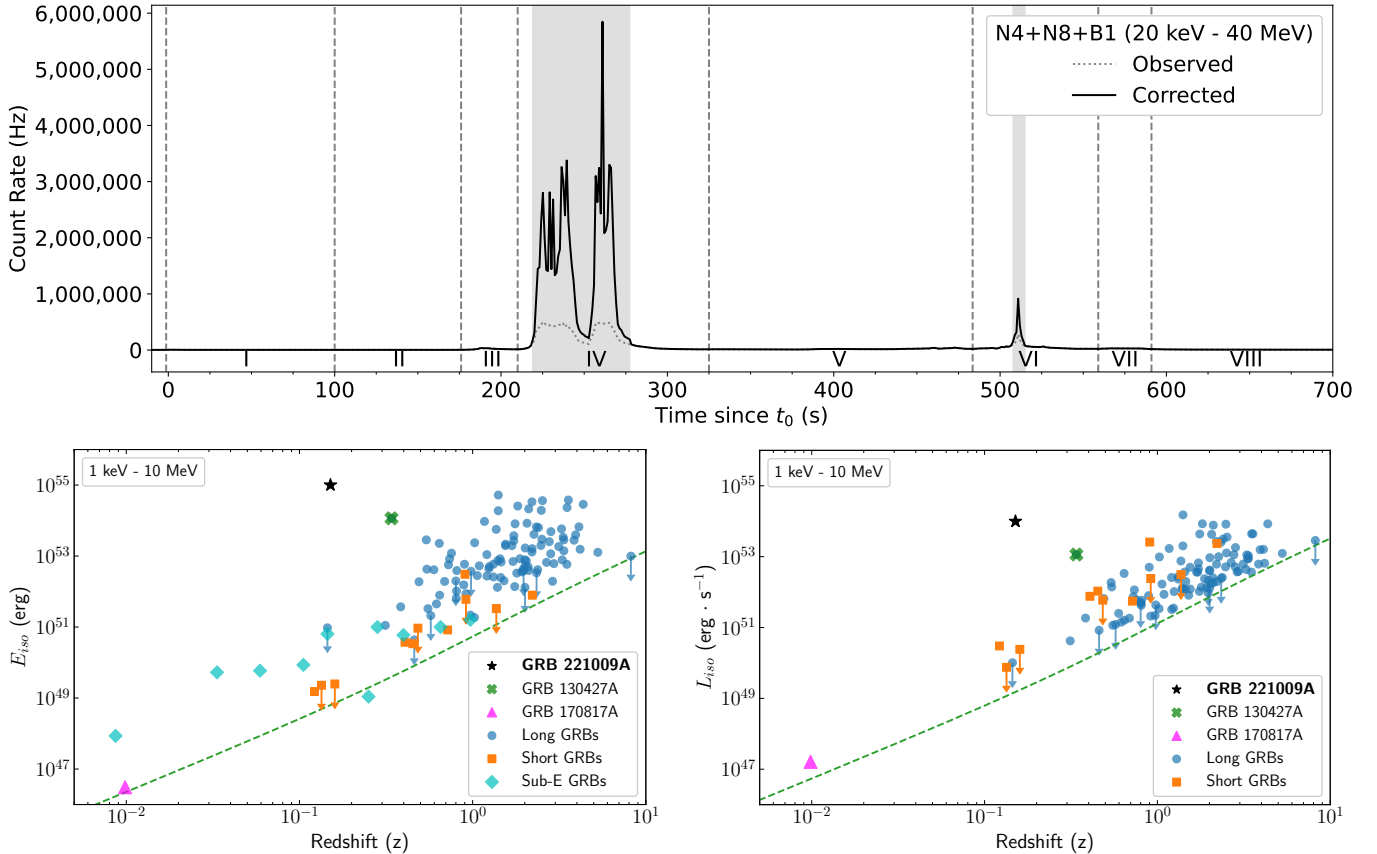


Figure 7. Top: The lightcurve of GRB 221009A from 8 keV to 40 MeV before and after PPU-correcting in the *Fermi*-GBM BTI region. Bottom: Short and long GRB E_{iso} (left) and L_{iso} (right) measures of *Fermi*-GBM-detected GRBs with known redshift through 2017 (Abbott et al. 2017), with updated spectral measures from Poolakkil et al. (2021). Key GRBs are highlighted. The downward arrows indicate GRBs best fit by a PL spectral model, which must turnover somewhere, so they are shown as upper limits. The E_{iso} plot is supplemented with low or intermediate luminosity GRBs with associated supernova from Cano et al. (2017). We do not utilize their luminosity measures as they are averaged (not peak).

requires a distribution of Lorentz factors. The observed peak emission around 15 MeV places strong constraints on the upper limit of the Lorentz factor, corresponding to peak Lorentz factors lying between 300–1000, with corresponding densities of $70\text{--}0.05 \times 10^{-10} \text{ g cm}^{-3}$.

We consider if this triggering pulse would be identified in other GRBs. Some bright long GRBs have weak trigger intervals followed by quiescence before the main emission episode, but most do not. The 1.024 s peak-flux interval of this pulse would trigger *Fermi*-GBM out to $z \approx 1.3$. Approximately half of *Fermi*-GBM GRBs with measured redshifts are within this range. Thus, a similar pulse should have been recovered in other bursts. The particularly high Γ for this burst would produce a higher luminosity shock breakout, which may explain the lack of identification in other collapsars.

8.2. Lorentz Factor

With the requirement that the prompt emission site be optically thin, we can derive lower limits on the

Lorentz factor. For this method we usually use the minimum variability timescale in conjunction with the spectral shape. Here we can only derive the MVT for the time intervals without PPU. The spectrum within the *Fermi*-GBM BTIs however yields stronger constraints on Γ even with conservative assumptions on the minimum variability timescale. Based on Figure 2 and the discussions in Section 4.2, we assume a conservative variability timescale estimate of $\Delta t_{\text{var}} = 0.1 \text{ s}$.

The Lorentz factor limits involve pair-production (Γ_{pp}) for the highest energy photons interacting with the *Fermi*-GBM prompt spectrum and the overall requirement that the *Fermi*-GBM spectrum be optically thin (Γ_{ot} ; Lithwick & Sari 2001). *Fermi*-LAT observed a 99.3 GeV photon at $t_0 + 240 \text{ s}$ (Pillera et al. 2022). Assuming the *Fermi*-GBM emission emanates from the same volume, the requirement that such a photon can escape without producing e^\pm pairs yields a Lorentz factor constraint of $\Gamma_{\text{pp,min}} \gtrsim 1560$. The calculation of Γ_{min} by Lithwick & Sari 2001 is done under the assumption of

a single zone. If we consider a more realistic situation, taking into account the angular, temporal and spatial dependence of the radiation field, our values of Γ_{\min} could be lower by a factor of ~ 2 (i.e., $\Gamma_{\text{pp},\min} \gtrsim 780$) (Hascöet et al. 2012; Gill & Granot 2018; Vianello et al. 2018; Arimoto et al. 2020).

The requirement that the *Fermi*-GBM emission is optically thin, given the spectrum in the brightest interval, yields a limit of $\Gamma_{\text{ot},\min} \gtrsim 1040$. If we instead use $\Delta t_{\text{var}} = 0.05$ s, which is still reasonable given the MVT values surrounding region IV, we find a Lorentz factor limit of $\Gamma_{\text{ot},\min} \gtrsim 1470$. Although both MVT-derived Lorentz factor lower limits fall below the single zone pair-production Lorentz factor lower limit, the two methods independently produce consistent results.

We can also place constraints on the Lorentz factor from the triggering pulse. Based on our COMP function spectral fits in region Ia ($\alpha = -1.69 \pm 0.01$, $E_{\text{peak}} = 3.98 \pm 0.37$ MeV, and energy flux $= (1.98 \pm 0.03) \times 10^{-6}$ erg cm $^{-2}$ s $^{-1}$ in the 10-1000 keV range) and requiring the source be optically thin, we find $\Gamma_{\text{trig},\min} \gtrsim 188$. Although less constraining, this value is consistent with the value of 300-1000 derived via a shock-breakout assumption. There are no photons in the GeV range that are unambiguously associated with the GRB during this time interval, so the pair-creation Lorentz factor limit is not constraining in this case.

The peak of the afterglow emission denotes the beginning of the external shock deceleration time. By identifying this peak for ISM and wind-type external media as $t_{\text{peak}}^{\text{ag,ISM}} \gtrsim t_0 + (140 \pm 1.5)$ s and $t_{\text{peak}}^{\text{ag,wind}} \gtrsim t_0 + (120 \pm 6.5)$ s respectively we can derive upper limits for the Lorentz factor of the afterglow via,

$$\Gamma_{\text{ag}} = \left[\left(\frac{(17-4s)}{16\pi(4-s)} \right) \left(\frac{E_k}{n_0 m_p c^{5-s}} \right) \right]^{\frac{1}{s-2s}} \left(\frac{t_{\text{peak}}}{(1+z)} \right)^{-\frac{3-s}{s-2s}} \quad (5)$$

where $s = 0$ assumes an ISM external density profile and $s = 2$ assumes a wind-type external medium (Nappo et al. 2014; Ghirlanda et al. 2018). For both cases we use the VLT reported redshift of $z = 0.151$ (de Ugarte Postigo et al. 2022b) and assume the kinetic energy, E_k is approximately the isotropic-equivalent gamma-ray energy ($E_k \approx E_{\text{iso}}$).

Assuming ISM ($s = 0$) we have:

$$\Gamma_{\text{ag,ISM}} \gtrsim 260 \left(\frac{E_{k,55}}{n/1 \text{ cm}^{-3}} \right)^{1/8} \left(\frac{t_{\text{peak}}}{120 \text{ s} \times 1.151} \right)^{-3/8} \quad (6)$$

Using the $t_{\text{peak}} = 105$ s value, increases slightly to $\Gamma_{\text{ag,ISM}} \gtrsim 270$ (all scaling parameters are the same)

For the wind-type external medium ($s = 2$) the density parameter $n = 3 \times 10^{35} A_{\star} \text{ cm}^{-1}$ (*Fermi*-LAT 2023) which gives us,

$$\Gamma_{\text{ag,wind}} \gtrsim 282 \left(\frac{E_{k,55}}{A_{\star,-1}} \right)^{1/4} \left(\frac{t_{\text{peak}}}{140 \text{ s} \times 1.151} \right)^{-1/4} \quad (7)$$

For a spherically emitting shell, the MVT relates the radius of the shell to the Lorentz factor via,

$$R \sim \Delta t_{\min} \left(\frac{\Gamma^2 c}{(1+z)} \right) \quad (8)$$

where R is the radius of the spherically emitting shell, Γ is the Lorentz factor, c is the speed of light, and z is the measured redshift. Along these lines, the MVT and the bulk Lorentz factor can be used to place limits on emitting shell radius, assuming a singular emitting region. In interval Ia, the average value of MVT is ~ 0.1 s. Using the afterglow-derived bulk Lorentz factor for the ISM ($\Gamma_{\text{ag,ISM}} \gtrsim 260$) and the wind-type external medium ($\Gamma_{\text{ag,wind}} \gtrsim 282$) as a proxy for the bulk Lorentz factor in this region gives us an estimate on the radius of the emitting star. We find $R_{\star, \text{ISM}} \gtrsim 1.7 \times 10^{14}$ cm and $R_{\star, \text{wind}} \gtrsim 2.0 \times 10^{14}$ cm for the ISM and wind-type media respectively. Both of these values are roughly consistent with the radius of the outer wind from the Wolf-Rayet progenitor star ($R_{\star} > 1 \times 10^{13}$ cm) (Crowther 2007).

Using this same equation, the lower limit of the shock breakout derived triggering pulse Lorentz factor ($\Gamma = 300$), and a delay time of ~ 220 s between regions I and III, we get an internal dissipation radius of $\sim 6 \times 10^{17}$ cm. This value is larger than is typically discussed but could be consistent with the ICMART model of 10^{16} cm, which is consistent with the non-detection of neutrinos (The IceCube Collaboration 2022; KM3NeT Collaboration 2022) and a Poynting flux dominated jet (Zhang & Yan 2010).

9. SUMMARY

Our dedicated search suggests that there is no emission from the central engine prior to the *Fermi*-GBM trigger time. Weak emission from the triggering pulse (region I) can be localized to GRB 221009A for up to 100s before returning to background. We find another weakly emitting pulse (region II) which we were able to localize to GRB 221009A just before the bulk of the main emission began. The central engine is then continuously active for ~ 600 s (region III through region VII) when the early onset of GRB afterglow is first observed (region VIII).

The first ~ 8 s of the triggering pulse has a peak energy (E_{peak}) of 4 MeV with the highest energy photons arriving first. The entire triggering pulse has spectrotemporal properties best characterized by the Lorentz-boosted thermal emission of shock breakout. Using the peak energy of the assumed shock breakout emission we are able to place the Lorentz factor (Γ) of this pulse between 300 and 1000 with corresponding shock densities between 70 and $0.05 \times 10^{-10} \text{ g cm}^{-3}$.

After correcting for the effects of PPU in the *Fermi*-GBM data we were able to characterize the total energetics of this burst. With a total isotropic-equivalent energy of $E_{\gamma,\text{iso}} = 1 \times 10^{55} \text{ erg}$ and an isotropic-equivalent luminosity of $L_{\gamma,\text{iso}} = 9.9 \times 10^{53} \text{ erg s}^{-1}$, GRB 221009A is the most energetic and second most luminous in the *Fermi*-GBM sample. Assuming a MVT of 0.05 s we place constraints on the Lorentz factor during the brightest interval via pair-creation using the *Fermi*-LAT reported 99.3 GeV photon and by assuming an optically thin environment. These values are $\Gamma_{\text{min,A}} \gtrsim 1560$ and $\Gamma_{\text{min,A}} \gtrsim 1470$ respectively (without the factor of 2 correction).

By comparing measurements with those observed by *Swift*-XRT we are able to characterize the onset of the early-afterglow period. We place lower limits on the afterglow peak time assuming both ISM and wind-type external media of $t_{\text{peak}}^{\text{ag,ISM}} \gtrsim t_0 + (140 \pm 1.5) \text{ s}$ and $t_{\text{peak}}^{\text{ag,wind}} \gtrsim t_0 + (120 \pm 6.5) \text{ s}$ respectively. We additionally find an early plateau region with a slope $\alpha_{\text{decay}}^{\text{ag}} = -0.82 \pm 0.03$ which gradually steepens to the observed *Swift*-XRT slope of $\alpha_s = -1.5$ at $t_0 > 1400 \text{ s}$. Again assuming both an ISM external medium and a wind-type external medium we calculate the Lorentz factor of the external shock as $\Gamma_{\text{ag,ISM}} \gtrsim 260$ and $\Gamma_{\text{ag,wind}} \gtrsim 282$ respectively.

Comparing the Lorentz factor of the prompt emission ($\Gamma_{\text{pr}} \sim 1560$; or $\Gamma_{\text{pr}} \sim 780$ after correcting for a factor of 2) to that of the afterglow ($\Gamma_{\text{ag,ISM}} \sim 260$ or $\Gamma_{\text{ag,wind}} \sim 282$) yields a deceleration of $\Delta\Gamma_{\text{ISM}} \sim 1300$ and $\Delta\Gamma_{\text{wind}} \sim 1278$ (or $\Delta\Gamma_{\text{ISM}} \sim 520$ and $\Delta\Gamma_{\text{wind}} \sim 498$) over $\sim 380 \text{ s}$. This rapid deceleration is suggestive of a relativistic reverse-shock (i.e., a “thick shell”) and is consistent with the deceleration time not exceeding the prompt GRB duration.

Taken altogether, the set of measurements presented here provide an unrivaled probe into the entirety of GRB 221009A’s central engine emission process. And while extremely energetic GRBs like GRB 221009A may be rare in their occurrence, this detection joins an

ever-growing list of groundbreaking GRB observations stretching all the way back to their discovery in 1967. We dedicate this paper to the memory of William “Bill” Paciesas who passed away in June 2022. Bill was a co-investigator of BATSE and, for a time, the Principal Investigator of *Fermi*-GBM, but he was arguably more well known by the high-energy astrophysics community for his punny humor and beer connoisseurship. With GRB 221009A being the Brightest Event Ever Recorded (BEER) and Bill not here to share it with us; this BEER’s for you.

10. ACKNOWLEDGMENTS

The UAH co-authors gratefully acknowledge NASA funding from co-operative agreement NNM11AA01A. The USRA co-authors gratefully acknowledge NASA funding through contract NNM13AA43C. D.K., C.A.W.H., and C.M.H. gratefully acknowledge NASA funding through the Fermi GBM project. Support for the German contribution to GBM was provided by the Bundesministerium für Bildung und Forschung (BMBF) via the Deutsches Zentrum für Luft und Raumfahrt (DLR) under contract number 50 QV 0301.

The *Fermi*-LAT Collaboration acknowledges generous ongoing support from a number of agencies and institutes that have supported both the development and the operation of the LAT as well as scientific data analysis. These include the National Aeronautics and Space Administration and the Department of Energy in the United States, the Commissariat à l’Energie Atomique and the Centre National de la Recherche Scientifique / Institut National de Physique Nucléaire et de Physique des Particules in France, the Agenzia Spaziale Italiana and the Istituto Nazionale di Fisica Nucleare in Italy, the Ministry of Education, Culture, Sports, Science and Technology (MEXT), High Energy Accelerator Research Organization (KEK) and Japan Aerospace Exploration Agency (JAXA) in Japan, and the K. A. Wallenberg Foundation, the Swedish Research Council and the Swedish National Space Board in Sweden. ECF is supported by NASA under award number 80GSFC21M0002.

Additional support for science analysis during the operations phase is gratefully acknowledged from the Istituto Nazionale di Astrofisica in Italy and the Centre National d’Études Spatiales in France. This work performed in part under DOE Contract DE-AC02-76SF00515.

This work made use of data supplied by the UK Swift Science Data Centre at the University of Leicester.

APPENDIX

A. FERMI TIME-RESOLVED INTERVAL SELECTION

Fermi provides spectral coverage over seven orders of magnitude in energy for short duration transients, beginning around 8 keV in *Fermi*-GBM and reaching into the hundreds of GeV with the *Fermi*-LAT. Time-resolved analyses using *Fermi* data can map the evolution of distinct spectral components in time. For most GRBs, the *Fermi*-GBM TTE data are binned to match the intervals of interest determined by burst structure or the counts in a given data type. Due to the various data issues caused by GRB 221009A, this burst requires special care when determining the appropriate temporal intervals to use.

The selections must first account for the burst duration exceeding the pointing stability timescale of *Fermi*. Visibility by *Fermi*-GBM to the source position begins 2111 s before trigger time (t_0) and lasts until t_0+1550 s when the region is occulted by the Earth. The visibility for the *Fermi*-LAT is limited by the *Fermi*-LAT field of view. The source leaves the *Fermi*-LAT primary field of view at t_0+380 s and exits the wider LLE data field of view at t_0+600 s.

Data selections must also account for the distinct intervals of *Fermi*-GBM and *Fermi*-LAT with and without pulse pile-up, and the capability to correct for pulse pile-up effects. In *Fermi*-GBM these intervals are from approximately t_0+219 s to t_0+277 s and from approximately t_0+508 s to t_0+514 s. Within these time intervals TTE data were lost due to the limited bandwidth of the *Fermi*-GBM electronics and are irrecoverable. CTIME and CSPEC data within these intervals exist but are severely effected by pulse pile-up and are unreliable in their current, uncorrected state. For regions surrounding the *Fermi*-GBM intervals with pulse pile-up, the temporal boundaries to switch between TTE and binned CSPEC (or CTIME) data are based on the temporal binning and phase of the binned data. This ensures the transition occurs on the edges of the binned data. Using the bin edges that fully cover the intervals with pulse pile-up gives selections times from $t_0+218.501$ s to $t_0+277.894$ s and from $t_0+507.275$ s to $t_0+514.443$ s.

Throughout the duration of GRB 221009A both the standard *Fermi*-LAT data product and the *Fermi*-LAT LLE data experienced data issues within certain time regions. Although we leave the details of these effected time regions to the *Fermi*-LAT paper (CITE LAT PAPER) we would like to mention how to properly handle using both data products simultaneously. LLE data are generated at 0.1 s and 1.0 s temporal resolution with their phase set to the bin boundary at *Fermi*-GBM trigger time. For *Fermi*-GBM intervals without pulse pile-up, the *Fermi*-GBM TTE data can be binned to match the edges of the LLE data. This is not possible during *Fermi*-GBM intervals with pulse pile-up because TTE data are irrecoverable during these times. Therefore, pulse pile-up corrected CSPEC or CTIME data must be used. For regions when the *Fermi*-GBM CSPEC or CTIME data are out of phase with the LLE data, the LLE data must be re-binned to be in-phase with the *Fermi*-GBM binned data. A similar re-binning procedure must also be done over the edges of these time intervals with either TTE or LLE data to handle the transitions both in and out of the *Fermi*-GBM intervals with pulse pile-up.

t_{start}	t_{stop}	TTE	CSPEC (or CTIME)
-10.000	210.000	Y	Y
210.000	218.501	Y	Y
218.501	277.894		Y*
277.894	290.000	Y	Y
290.000	380.000	Y	Y
380.000	507.275	Y	Y
507.275	514.443		Y*
514.443	600.000	Y	Y
600.000	1500.000	Y	Y

Table 2. The *Fermi*-GBM data products valid within a given time interval. All time range values are relative to the *Fermi*-GBM trigger. The data types with an asterisk represent *Fermi*-GBM data types with pulse pile-up and should only be used for scientific interpretation after correcting for pulse pile-up effects.

REFERENCES

- Abbott, B. P., Abbott, R., Abbott, T. D., et al. 2017, ApJ, 848, L13, doi: 10.3847/2041-8213/aa920c
- Abdalla, H., Adam, R., Aharonian, F., et al. 2019, Nature, 575, 464, doi: 10.1038/s41586-019-1743-9

- Abdalla, H., Aharonian, F., Benkhali, F. A., et al. 2021, *Science*, 372, 1081, doi: [10.1126/science.abe8560](https://doi.org/10.1126/science.abe8560)
- Abdo, A. A., Ackermann, M., Ajello, M., et al. 2009, *ApJ*, 706, L138, doi: [10.1088/0004-637X/706/1/L138](https://doi.org/10.1088/0004-637X/706/1/L138)
- Acciari, V. A., Ansoldi, S., Antonelli, L. A., et al. 2019, *Nature*, 575, 455, doi: [10.1038/s41586-019-1750-x](https://doi.org/10.1038/s41586-019-1750-x)
- Acciari, V. A., Ansoldi, S., Antonelli, L. A., et al. 2021, *ApJ*, 908, 90, doi: [10.3847/1538-4357/abd249](https://doi.org/10.3847/1538-4357/abd249)
- Ackermann, M., Asano, K., Atwood, W. B., et al. 2010, *The Astrophysical Journal*, 716, 1178, doi: [10.1088/0004-637x/716/2/1178](https://doi.org/10.1088/0004-637x/716/2/1178)
- Ackermann, M., Ajello, M., Asano, K., et al. 2011, *Astrophysical Journal Letters*, 729, 114, doi: [10.1088/0004-637X/729/2/114](https://doi.org/10.1088/0004-637X/729/2/114)
- Ackermann, M., Ajello, M., Asano, K., et al. 2014, *Science*, 343, 42, doi: [10.1126/science.1242353](https://doi.org/10.1126/science.1242353)
- Ajello, M., Arimoto, M., Axelsson, M., et al. 2019, *ApJ*, 878, 52, doi: [10.3847/1538-4357/ab1d4e](https://doi.org/10.3847/1538-4357/ab1d4e)
- . 2020, *ApJ*, 890, 9, doi: [10.3847/1538-4357/ab5b05](https://doi.org/10.3847/1538-4357/ab5b05)
- An, Z.-H., Antier, S., Bi, X.-Z., et al. 2023, *Insight-HXMT and GECAM-C observations of the brightest-of-all-time GRB 221009A*, arXiv, doi: [10.48550/ARXIV.2303.01203](https://doi.org/10.48550/ARXIV.2303.01203)
- Arimoto, M., Asano, K., Tachibana, Y., & Axelsson, M. 2020, *The Astrophysical Journal*, 891, 106, doi: [10.3847/1538-4357/ab72f7](https://doi.org/10.3847/1538-4357/ab72f7)
- Atwood, W. B., Abdo, A. A., Ackermann, M., et al. 2009, *The Astrophysical Journal*, 697, 1071, doi: [10.1088/0004-637x/697/2/1071](https://doi.org/10.1088/0004-637x/697/2/1071)
- Axelsson, M., Baldini, L., Barbiellini, G., et al. 2012, *ApJ*, 757, L31, doi: [10.1088/2041-8205/757/2/L31](https://doi.org/10.1088/2041-8205/757/2/L31)
- Band, D., Matteson, J., Ford, L., et al. 1993, *ApJ*, 413, 281, doi: [10.1086/172995](https://doi.org/10.1086/172995)
- Beniamini, P., & Piran, T. 2013, *The Astrophysical Journal*, 769, 69, doi: [10.1088/0004-637X/769/1/69](https://doi.org/10.1088/0004-637X/769/1/69)
- Bhat, N. P. 2013, in *EAS Publications Series*, Vol. 61, *EAS Publications Series*, ed. A. J. Castro-Tirado, J. Gorosabel, & I. H. Park, 45–52, doi: [10.1051/eas/1361005](https://doi.org/10.1051/eas/1361005)
- Bhat, P. N., Fishman, G. J., Briggs, M. S., et al. 2014, *Exp. Astron.*, 38, 331, doi: [10.1007/s10686-014-9424-z](https://doi.org/10.1007/s10686-014-9424-z)
- Bhat, P. N., Briggs, M. S., Connaughton, V., et al. 2012, *ApJ*, 744, 141, doi: [10.1088/0004-637X/744/2/141](https://doi.org/10.1088/0004-637X/744/2/141)
- Bissaldi, E., Omodei, N., & (NRL), M. K. 2022, *GCN Circ.*, 32637. <https://gcn.gsfc.nasa.gov/gcn3/32637.gcn3>
- Blackburn, L., Briggs, M. S., Camp, J., et al. 2015, *ApJS*, 217, 8, doi: [10.1088/0067-0049/217/1/8](https://doi.org/10.1088/0067-0049/217/1/8)
- Blanch, O., Gaug, M., Noda, K., et al. 2020, *GRB Coordinates Network*, 28659, 1. <https://gcn.gsfc.nasa.gov/gcn3/28659.gcn3>
- Burgess, J. M., Preece, R. D., Baring, M. G., et al. 2011, *ApJ*, 741, 24, doi: [10.1088/0004-637X/741/1/24](https://doi.org/10.1088/0004-637X/741/1/24)
- Cano, Z., Wang, S.-Q., Dai, Z.-G., & Wu, X.-F. 2017, *Advances in Astronomy*, 2017
- Chaplin, V., Bhat, N., Briggs, M. S., & Connaughton, V. 2013, *Nucl. Instrum. Methods A*, 717, 21, doi: <https://doi.org/10.1016/j.nima.2013.03.067>
- Chirenti, C., Dichiara, S., Lien, A., Miller, M. C., & Preece, R. 2023, *Nature*, 613, 253, doi: [10.1038/s41586-022-05497-0](https://doi.org/10.1038/s41586-022-05497-0)
- Connaughton, V. 2002, *ApJ*, 567, 1028, doi: [10.1086/338695](https://doi.org/10.1086/338695)
- Crowther, P. A. 2007, *Annual Review of Astronomy and Astrophysics*, 45, 177, doi: [10.1146/annurev.astro.45.051806.110615](https://doi.org/10.1146/annurev.astro.45.051806.110615)
- de Ugarte Postigo, A., Izzo, L., Thoene, C. C., et al. 2022a, *GRB Coordinates Network*, 32800, 1
- de Ugarte Postigo, A., Izzo, L., Pugliese, G., et al. 2022b, *GRB Coordinates Network*, 32648, 1
- Dichiara, S., Gropp, J., Kennea, J. A., et al. 2022, *GCN Circ.*, 32632. <https://gcn.gsfc.nasa.gov/gcn3/32632.gcn3>
- Eichler, D., Livio, M., Piran, T., & Schramm, D. N. 1989, *Nature*, 340, 126
- Fitzpatrick, G., Connaughton, V., McBreen, S., & Tierney, D. 2011, arXiv e-prints, doi: [10.48550/ARXIV.1111.3779](https://doi.org/10.48550/ARXIV.1111.3779)
- Frederiks, D., Svinkin, D., Lysenko, A. L., et al. 2023, *Properties of the extremely energetic GRB 221009A from Konus-WIND and SRG/ART-XC observations*, arXiv, doi: [10.48550/ARXIV.2302.13383](https://doi.org/10.48550/ARXIV.2302.13383)
- Fukami, S., Berti, A., Loporchio, S., et al. 2021, in *Proceedings of 37th International Cosmic Ray Conference — PoS(ICRC2021)*, Vol. 395, 788, doi: [10.22323/1.395.0788](https://doi.org/10.22323/1.395.0788)
- Fulton, M. D., Smartt, S. J., Rhodes, L., et al. 2023, *The optical light curve of GRB 221009A: the afterglow and detection of the emerging supernova SN 2022xiw*, arXiv, doi: [10.48550/ARXIV.2301.11170](https://doi.org/10.48550/ARXIV.2301.11170)
- Ghirlanda, G., Nappo, F., Ghisellini, G., et al. 2018, *A&A*, 609, A112, doi: [10.1051/0004-6361/201731598](https://doi.org/10.1051/0004-6361/201731598)
- Giblin, T. W., van Paradijs, J., Kouveliotou, C., et al. 1999, *ApJ*, 524, L47, doi: [10.1086/312285](https://doi.org/10.1086/312285)
- Gill, R., & Granot, J. 2018, *Monthly Notices of the Royal Astronomical Society*, 478, 4128, doi: [10.1093/mnras/sty1214](https://doi.org/10.1093/mnras/sty1214)
- Goldstein, A., Burns, E., Hamburg, R., et al. 2016, arXiv e-prints, doi: [10.48550/arxiv.1612.02395](https://doi.org/10.48550/arxiv.1612.02395)
- Goldstein, A., Cleveland, W. H., & Kocevski, D. 2022, *Fermi GBM Data Tools: v1.1.1*. <https://fermi.gsfc.nasa.gov/ssc/data/analysis/gbm>
- Goldstein, A., Burgess, J. M., Preece, R. D., et al. 2012, *ApJS*, 199, 19, doi: [10.1088/0067-0049/199/1/19](https://doi.org/10.1088/0067-0049/199/1/19)

- Goodman, J. 1986, *The Astrophysical Journal*, 308, L47
- Granot, J., & Sari, R. 2002, *ApJ*, 568, 820, doi: [10.1086/338966](https://doi.org/10.1086/338966)
- Gruber, D., Goldstein, A., von Ahlefeld, V. W., et al. 2014, *ApJS*, 211, 12, doi: [10.1088/0067-0049/211/1/12](https://doi.org/10.1088/0067-0049/211/1/12)
- Grupe, D., Nousek, J. A., Veres, P., Zhang, B.-B., & Gehrels, N. 2013, *ApJS*, 209, 20, doi: [10.1088/0067-0049/209/2/20](https://doi.org/10.1088/0067-0049/209/2/20)
- Guha, A., & Nicholson, P. 2022, *GCN Circ.* , 32745. <https://gcn.gsfc.nasa.gov/gcn3/32745.gcn3>
- Guiriec, S., Mochkovitch, R., Piran, T., et al. 2015, *ApJ*, 814, 10, doi: [10.1088/0004-637X/814/1/10](https://doi.org/10.1088/0004-637X/814/1/10)
- Guiriec, S., Connaughton, V., Briggs, M. S., et al. 2011, *ApJ*, 727, L33, doi: [10.1088/2041-8205/727/2/L33](https://doi.org/10.1088/2041-8205/727/2/L33)
- Hascöet, R., Daigne, F., Mochkovitch, R., & Vennin, V. 2012, *MNRAS*, 421, 525, doi: [10.1111/j.1365-2966.2011.20332.x](https://doi.org/10.1111/j.1365-2966.2011.20332.x)
- Hou, S.-J., Zhang, B.-B., Meng, Y.-Z., et al. 2018, *ApJ*, 866, 13, doi: [10.3847/1538-4357/aadc07](https://doi.org/10.3847/1538-4357/aadc07)
- Huang, Y., Hu, S., Chen, S., et al. 2022, *GRB Coordinates Network*, 32677, 1
- Hübner, M., Huppenkothen, D., Lasky, P. D., et al. 2022, *ApJ*, 936, 17, doi: [10.3847/1538-4357/ac7959](https://doi.org/10.3847/1538-4357/ac7959)
- Kennea, J. A., & Williams, M. 2022, *GCN Circ.* , 32635. <https://gcn.gsfc.nasa.gov/gcn3/32635.gcn3>
- KM3NeT Collaboration. 2022, *GCN Circ.* , 32741. <https://gcn.gsfc.nasa.gov/gcn3/32741.gcn3>
- Knoll, G. F. 2010, *Radiation detection and measurement* (John Wiley & Sons)
- Fermi*-LAT. 2023, remove221009a
- Lesage, S., Veres, P., Roberts, O., Burns, E., & Bissaldi, E. 2022, *GCN Circ.* , 32642. <https://gcn.gsfc.nasa.gov/gcn3/32642.gcn3>
- Levan, A., Barclay, T., Bhirombhakdi, K., et al. 2022a, *GCN Circ.* , 32921. <https://gcn.gsfc.nasa.gov/gcn3/32921.gcn3>
- Levan, A., Barclay, T., Burns, E., et al. 2022b, *GCN Circ.* , 32821. <https://gcn.gsfc.nasa.gov/gcn3/32821.gcn3>
- Levan, A. J., Lamb, G. P., Schneider, B., et al. 2023, The first JWST spectrum of a GRB afterglow: No bright supernova in observations of the brightest GRB of all time, GRB 221009A, arXiv, doi: [10.48550/ARXIV.2302.07761](https://doi.org/10.48550/ARXIV.2302.07761)
- Lithwick, Y., & Sari, R. 2001, *ApJ*, 555, 540, doi: [10.1086/321455](https://doi.org/10.1086/321455)
- Lithwick, Y., & Sari, R. 2001, *The Astrophysical Journal*, 555, 540, doi: [10.1086/321455](https://doi.org/10.1086/321455)
- Lysenko, A. L., Anfingentov, S. A., Svinkin, D. S., Frederiks, D. D., & Fleishman, G. D. 2019, *ApJ*, 877, 145, doi: [10.3847/1538-4357/ab1be0](https://doi.org/10.3847/1538-4357/ab1be0)
- MacFadyen, A. I., & Woosley, S. E. 1999, *The Astrophysical Journal*, 524, 262, doi: [10.1086/307790](https://doi.org/10.1086/307790)
- MAGIC Collaboration, Acciari, V. A., Ansoldi, S., et al. 2019, *Nature*, 575, 459, doi: [10.1038/s41586-019-1754-6](https://doi.org/10.1038/s41586-019-1754-6)
- Mailyan, B. G., Xu, W., Celestin, S., et al. 2019, *Journal of Geophysical Research: Space Physics*, 124, 7170, doi: <https://doi.org/10.1029/2019JA026912>
- Mailyan, B. G., Briggs, M. S., Cramer, E. S., et al. 2016, *Journal of Geophysical Research: Space Physics*, 121, 11,346, doi: <https://doi.org/10.1002/2016JA022702>
- Maiorano, E., Palazzi, E., Rossi, A., et al. 2022, *GRB Coordinates Network*, 32850, 1. <https://gcn.gsfc.nasa.gov/gcn3/32850.gcn3>
- Mazets, E. P., Cline, T. L., Aptekar, R. L., et al. 1999, *ApJ*, 25, 628. <https://arxiv.org/abs/astro-ph/9905196>
- Meegan, C., Lichti, G., Bhat, P. N., et al. 2009, *ApJ*, 702, 791, doi: [10.1088/0004-637x/702/1/791](https://doi.org/10.1088/0004-637x/702/1/791)
- Mészáros, P., & Rees, M. J. 1993, *ApJ*, 405, 278, doi: [10.1086/172360](https://doi.org/10.1086/172360)
- . 1997, *ApJ*, 476, 232, doi: [10.1086/303625](https://doi.org/10.1086/303625)
- Mitchell, L. J., Philips, B. F., & Johnson, W. N. 2022, *GRB Coordinates Network*, 32746, 1
- Nappo, F., Ghisellini, G., Ghirlanda, G., et al. 2014, *MNRAS*, 445, 1625, doi: [10.1093/mnras/stu1832](https://doi.org/10.1093/mnras/stu1832)
- Narayan, R., Paczynski, B., & Piran, T. 1992, *The Astrophysical Journal*, 395, L83, doi: [10.1086/186493](https://doi.org/10.1086/186493)
- Negro, M., Manfreda, A., & Omodei, N. 2022a, *GCN Circ.* , 32690. <https://gcn.gsfc.nasa.gov/gcn3/32690.gcn3>
- Negro, M., Manfreda, A., Omodei, N., & Muleri, F. 2022b, *GCN Circ.* , 32754. <https://gcn.gsfc.nasa.gov/gcn3/32754.gcn3>
- Negro, M., Di Lalla, N., Omodei, N., et al. 2023, The IXPE view of GRB 221009A, arXiv, doi: [10.48550/ARXIV.2301.01798](https://doi.org/10.48550/ARXIV.2301.01798)
- Norris, J. P., Bonnell, J. T., Kazanas, D., et al. 2005, *ApJ*, 627, 324, doi: [10.1086/430294](https://doi.org/10.1086/430294)
- Oganesyan, G., Nava, L., Ghirlanda, G., & Celotti, A. 2017, *The Astrophysical Journal*, 846, 137, doi: [10.3847/1538-4357/aa831e](https://doi.org/10.3847/1538-4357/aa831e)
- Omodei, N., Bruel, P., Bregeon, J., et al. 2022a, *GCN Circ.* , 32760. <https://gcn.gsfc.nasa.gov/gcn3/32760.gcn3>
- . 2022b, *GCN Circ.* , 32916. <https://gcn.gsfc.nasa.gov/gcn3/32916.gcn3>
- Paczynski, B. 1986, *The Astrophysical Journal*, 308, L43
- Pelassa, V., Preece, R., Piron, F., Omodei, N., & Guiriec, S. 2010, arXiv e-prints, doi: [10.48550/ARXIV.1002.2617](https://doi.org/10.48550/ARXIV.1002.2617)
- Pillera, R., Bissaldi, E., Omodei, N., Mura, G. L., & Longo, F. 2022, *GCN Circ.* , 32658. <https://gcn.gsfc.nasa.gov/gcn3/32658.gcn3>

- Poolakkil, S., Preece, R., Fletcher, C., et al. 2021, *ApJ*, 913, 60, doi: [10.3847/1538-4357/abf24d](https://doi.org/10.3847/1538-4357/abf24d)
- Preece, R. D., Briggs, M. S., Mallozzi, R. S., et al. 1998, *The Astrophysical Journal*, 506, L23, doi: [10.1086/311644](https://doi.org/10.1086/311644)
- Ravasio, M., Oganessian, G., Ghirlanda, G., et al. 2018, *A&A*, 613, 11, doi: [10.1051/0004-6361/201732245](https://doi.org/10.1051/0004-6361/201732245)
- Rees, M. J., & Mészáros, P. 1994, *The Astrophysical Journal*, 430, L93, doi: [10.1086/187446](https://doi.org/10.1086/187446)
- Ripa, J., Pal, A., Werner, N., et al. 2022, *GRB Coordinates Network*, 32685, 1
- Ripa, J., Takahashi, H., Fukazawa, Y., et al. 2023, *The peak-flux of GRB 221009A measured with GRBAlpha*, arXiv, doi: [10.48550/ARXIV.2302.10047](https://doi.org/10.48550/ARXIV.2302.10047)
- Ryde, F., Pe'er, A., Nymark, T., et al. 2011, *MNRAS*, 415, 3693, doi: [10.1111/j.1365-2966.2011.18985.x](https://doi.org/10.1111/j.1365-2966.2011.18985.x)
- Sari, R., Piran, T., & Narayan, R. 1998, *The Astrophysical Journal*, 497, L17, doi: [10.1086/311269](https://doi.org/10.1086/311269)
- Schnoor, P. W., Nicholson, P., & Welch, D. L. 2022, *GCN Circ.*, 32744. <https://gcn.gsfc.nasa.gov/gcn3/32744.gcn3>
- Svinkin, D., Frederiks, D., Ridnaia, A., et al. 2022, *GCN Circ.*, 32641. <https://gcn.gsfc.nasa.gov/gcn3/32641.gcn3>
- The IceCube Collaboration. 2022, *GCN Circ.*, 32665. <https://gcn.gsfc.nasa.gov/gcn3/32665.gcn3>
- Tiengo, A., Pintore, F., Mereghetti, S., & Salvaterra, R. 2022, *The Astronomer's Telegram*, 15661, 1
- van der Klis, M. 1989, *Fourier Techniques in X-Ray Timing*, Vol. 324 (Dordrecht: Springer Netherlands), 27–69, doi: [10.1007/978-94-009-2273-0_3](https://doi.org/10.1007/978-94-009-2273-0_3)
- Veres, P., Burns, E., Bissaldi, E., Lesage, S., & Roberts, O. 2022, *GCN Circ.*, 32636. <https://gcn.gsfc.nasa.gov/gcn3/32636.gcn3>
- Vianello, G., Gill, R., Granot, J., et al. 2018, *The Astrophysical Journal*, 864, 163, doi: [10.3847/1538-4357/aad6ea](https://doi.org/10.3847/1538-4357/aad6ea)
- von Kienlin, A., Meegan, C. A., Paciesas, W. S., et al. 2020, *ApJ*, 893, 46, doi: [10.3847/1538-4357/ab7a18](https://doi.org/10.3847/1538-4357/ab7a18)
- Williams, M. 2023, *GRB Coordinates Network*, 33305, 1. <https://gcn.gsfc.nasa.gov/gcn3/33305.gcn3>
- Williams, M. A., Kennea, J. A., Dichiara, S., et al. 2023, *GRB 221009A: Discovery of an Exceptionally Rare Nearby and Energetic Gamma-Ray Burst*, arXiv, doi: [10.48550/ARXIV.2302.03642](https://doi.org/10.48550/ARXIV.2302.03642)
- Wilson-Hodge, C. A., Case, G. L., Cherry, M. L., et al. 2012, *ApJS*, 201, 33, doi: [10.1088/0067-0049/201/2/33](https://doi.org/10.1088/0067-0049/201/2/33)
- Woosley, S. E. 1993, *Astrophysical Journal*, 405, 273, doi: [10.1086/172359](https://doi.org/10.1086/172359)
- Xiao, H., Krucker, S., Daniel, R., & STIX Team. 2022a, *GRB Coordinates Network*, 32661, 1. <https://gcn.gsfc.nasa.gov/gcn3/32661.gcn3>
- Xiao, S., Zhang, Y.-Q., Zhu, Z.-P., et al. 2022b, arXiv e-prints, arXiv:2205.02186, doi: [10.48550/arXiv.2205.02186](https://doi.org/10.48550/arXiv.2205.02186)
- Zhang, B., & Yan, H. 2010, *The Astrophysical Journal*, 726, 90, doi: [10.1088/0004-637x/726/2/90](https://doi.org/10.1088/0004-637x/726/2/90)
- Zhang, B.-B., Uhm, Z. L., Connaughton, V., Briggs, M. S., & Zhang, B. 2016, *ApJ*, 816, 72, doi: [10.3847/0004-637X/816/2/72](https://doi.org/10.3847/0004-637X/816/2/72)
- Zhang, B. B., Zhang, B., Castro-Tirado, A. J., et al. 2018, *Nature*, 2, 69, doi: [10.1038/s41550-017-0309-8](https://doi.org/10.1038/s41550-017-0309-8)