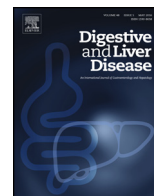




Contents lists available at ScienceDirect

## Digestive and Liver Disease

journal homepage: [www.elsevier.com/locate/dld](http://www.elsevier.com/locate/dld)

## Image of the Month

## Colonic metaplasia of the neo-terminal ileum in Crohn's Disease

Livia Biancone<sup>a,\*</sup>, Laura Albertoni<sup>b</sup>, Marta Ascolani<sup>a</sup>, Claudia Mescoli<sup>b</sup>, Massimo Rugge<sup>b</sup><sup>a</sup> Department of Systems Medicine, Unit of Gastroenterology, University of Rome "Tor Vergata", Rome, Italy<sup>b</sup> Department of Medicine, DIMED, Pathology Unit, University of Padova, Padova, Italy

Mucosa of the neo-terminal ileum after ileo-colonic resection for Crohn's Disease (CD), showing sulfomucin-type metaplasia. The High-Iron-Diamine (HID) histochemical reaction documents the neo-expression of sulfomucins in ileal columnar/goblet enterocytes (Fig. 1).

In a previous study [1] we already documented in CD ileum the metaplastic transformation of the native ileal mucosa into colonic type sulfomucin-rich mucosa (i.e. colonic metaplasia).

Submucosal and myenteric plexitis in proximal margins of ileocolonic resection specimens have been associated with CD recurrence [2,3]. Differently, the clinico-pathological usefulness of colonic metaplasia as early predictor of clinical and endoscopic CD recurrence is undefined.

**Panels A–C**

Ileal mucosa (biopsy sample obtained 6 months after ileo-colonic resection): *Panel A*. In the routine hematoxylin-eosin stain, the original structure of the ileal villi is well recognizable and only mild distortion of the crypts and lymphocytic flogosis is observable. Hematoxylin-eosin, original magnification 10×. *Panel B*. The original structure of the ileal villi is well recognizable (sialomucin secreting goblet cells bordering the villous structure [light blue]). Some of the crypts are bordered by intense-brown stained epithelia (containing sulfomucins: i.e. sulfomucin-secreting metaplasia). High Iron Diamine; original magnification 10×. *Panel C*. At a higher magnification, the sulfomucin secreting goblet cells (intense-brown) bordering the crypts structure (light blue) are more assessable. High Iron Diamine; original magnification 25×.

**Panels D–F**

Ileal mucosa (biopsy sample obtained 12 months after ileo-colonic resection): *Panel D*. In the routine hematoxylin-eosin stain, the original structure of the ileal villi is almost lost and a more intense flogosis (but no granulocytes) and crypt distortion

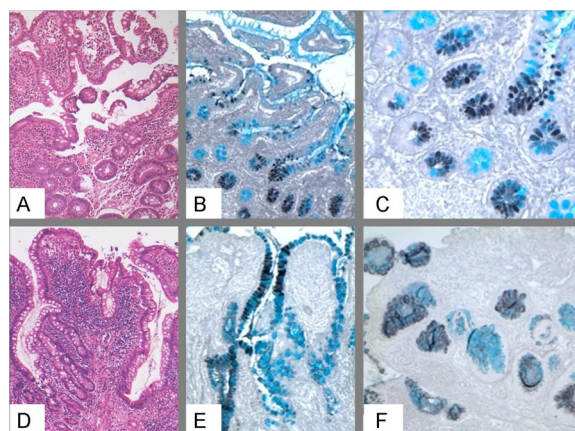


Fig. 1.

are observed. Hematoxylin-eosin, original magnification 10×. *Panel E*. The sulfomucin-secreting cells (intense brown) appear along the remaining villous structure, beyond crypts (sulfomucin-secreting metaplasia involving the whole villous structure). High Iron Diamine; original magnification 25×. *Panel F*. At a higher magnification, the sulfomucin secreting crypts (intense-brown) predominate on sialomucin-secreting (light blue) goblet cells (sulfomucin-secreting metaplasia involving the whole epithelium). High Iron Diamine; original magnification 40×.

**References**

- [1] Ascolani M, Mescoli C, Palmieri G, et al. Colonic phenotype of the ileum in Crohn's Disease: a prospective study before and after ileo-colonic resection. *Inflammatory Bowel Disease* 2014;20:1555–61.
- [2] Sokol H, Polin V, Lavegne-Slove A, et al. Plexitis as a predictive factor of early postoperative clinical recurrence in Crohn's Disease. *Gut* 2009;58:1218–25.
- [3] Ferrante M, De Hertogh G, Hlavaty T, et al. The value of myenteric plexitis to predict early postoperative Crohn's Disease recurrence. *Gastroenterology* 2006;130:1595–606.

\* Corresponding author at: Department of Systems Medicine, Unit of Gastroenterology, University of Rome "Tor Vergata", Via Montpellier 1, 00133 Rome, Italy. Fax: +39 06 20903738.

E-mail address: [biancone@med.uniroma2.it](mailto:biancone@med.uniroma2.it) (L. Biancone).