

# A national mandatory-split liver policy: A report from the Italian experience

Roberta Angelico<sup>1</sup>  | Silvia Trapani<sup>2</sup> | Marco Spada<sup>1</sup> | Michele Colledan<sup>3</sup> | Jean de Ville de Goyet<sup>4</sup> | Mauro Salizzoni<sup>5</sup> | Luciano De Carlis<sup>6</sup> | Enzo Andorno<sup>7</sup> | Salvatore Gruttadauria<sup>8</sup> | Giuseppe Maria Ettorre<sup>9</sup> | Matteo Cescon<sup>10</sup> | Giorgio Rossi<sup>11</sup> | Andrea Risaliti<sup>12</sup> | Giuseppe Tisone<sup>13</sup> | Umberto Tedeschi<sup>14</sup> | Marco Vivarelli<sup>15</sup> | Salvatore Agnes<sup>16</sup> | Paolo De Simone<sup>17</sup> | Luigi Giovanni Lupo<sup>18</sup> | Fabrizio Di Benedetto<sup>19</sup> | Walter Santaniello<sup>20</sup> | Fausto Zamboni<sup>21</sup> | Vincenzo Mazzaferro<sup>22</sup> | Massimo Rossi<sup>23</sup> | Francesca Puoti<sup>2</sup> | Stefania Camagni<sup>3</sup> | Chiara Grimaldi<sup>1</sup> | Enrico Gringeri<sup>24</sup> | Lucia Rizzato<sup>2</sup> | Alessandro Nanni Costa<sup>2</sup> | Umberto Cillo<sup>24</sup>

<sup>1</sup>Division of Abdominal Transplantation and Hepatobiliarypancreatic Surgery, Bambino Gesù Children's Hospital IRCCS, Rome, Italy

<sup>2</sup>Italian National Transplant Center, Italian National Institute of Health, Rome, Italy

<sup>3</sup>Department of Organ Failure and Transplantation - ASST Papa Giovanni XXIII, Bergamo, Italy

<sup>4</sup>Department of Pediatrics for the Study of Abdominal Diseases and Abdominal Transplantation, ISMETT (Istituto Mediterraneo per i Trapianti e Terapie ad Alta Specializzazione), IRCCS - UPMC (University of Pittsburgh Medical Center), Palermo, Italy

<sup>5</sup>General Surgery 2U, Liver Transplant Unit, A.O.U. Città della Salute e della Scienza di Torino, University of Torino, Torino, Italy

<sup>6</sup>Division of General Surgery & Abdominal Transplantation, ASST Grande Ospedale Metropolitano Niguarda, School of Medicine, University of Milano-Bicocca, Milan, Italy

<sup>7</sup>Department of Hepatobiliarypancreatic Surgery and Liver Transplantation Unit, Ospedale San Martino, Genoa, Italy

<sup>8</sup>Department for the Study of Abdominal Diseases and Abdominal Transplantation, IRCCS - ISMETT (Istituto Mediterraneo per i Trapianti e Terapie ad Alta Specializzazione), University of Pittsburgh Medical Center, Palermo, Italy

<sup>9</sup>Division of General Surgery and Liver Transplantation, S. Camillo Hospital, Rome, Italy

<sup>10</sup>Department of Medical and Surgical Sciences - DIMEC, Alma Mater Studiorum - University of Bologna, Bologna, Italy

<sup>11</sup>Division of General Surgery and Liver Transplantation, IRCCS Foundation, Ca' Granda Maggiore Hospital, University of Milan, Milan, Italy

<sup>12</sup>Department of Medicine, University of Udine, Udine, Italy

<sup>13</sup>Transplant Unit, Department of Surgery, Tor Vergata University, Rome, Italy

<sup>14</sup>Liver Transplant Unit, Department of Surgical Science, University and Hospital Trust of Verona, Verona, Italy

<sup>15</sup>Hepatobiliary and Abdominal Transplantation Surgery, Department of Experimental and Clinical Medicine, Polytechnic University of Marche, Ancona, Italy

<sup>16</sup>Department of Surgery, Transplantation Service, Catholic University of the Sacred Heart, Fondazione A. Gemelli Hospital, Rome, Italy

<sup>17</sup>Hepatobiliary Surgery and Liver Transplantation, University of Pisa Medical School Hospital, Pisa, Italy

<sup>18</sup>Sezione Chirurgia Generale e Trapianti di Fegato, Policlinico di Bari, Bari, Italy

<sup>19</sup>Hepato-Pancreato-Biliary Surgery and Liver Transplantation Unit, University of Modena and Reggio Emilia, Modena, Italy

<sup>20</sup>Unit of Hepatobiliary Surgery and Liver Transplant Center, Department of Gastroenterology and Transplantation, "A. Cardarelli" Hospital, Naples, Italy

<sup>21</sup>Department of Surgery, General and Hepatic Transplantation Surgery Unit, A.O.B. Brotzu, Cagliari, Italy

<sup>22</sup>Hepatology and Liver Transplantation Unit, Department of Surgery, University of Milan and Fondazione IRCCS Istituto Nazionale dei Tumori, Milan, Italy

<sup>23</sup>Department of General Surgery and Organ Transplantation, Umberto I Policlinic, Sapienza University, Rome, Italy

<sup>24</sup>Hepatobiliary Surgery and Liver Transplantation Unit, University of Padova, Padova, Italy

**Abbreviations:** BMI, body mass index; CIT, cold ischemic time; CNT, National Transplantation Centre; ERG, extended right graft; ITU, intensive therapy unit; LDLT, living donor liver transplantation; LFTs, liver function tests; LLS, left lateral segment; LT, liver transplantation; MELD, model of end-stage liver disease; MOF, multiorgan failure; PELD, pediatric end-stage liver disease; PNF, primary nonfunction; SLP, split liver policy; SLT, split liver transplantation; UNOS, United Network of Organ Sharing.

Angelico and Trapani contributed equally for first authorship.

**Correspondence**

Marco Spada

Email: marco.spada@opbg.net

To implement split liver transplantation (SLT) a mandatory-split policy has been adopted in Italy since August 2015: donors aged 18-50 years at standard risk are offered for SLT, resulting in a left-lateral segment (LLS) graft for children and an extended-right graft (ERG) for adults. We aim to analyze the impact of the new mandatory-split policy on liver transplantation (LT)-waiting list and SLT outcomes, compared to old allocation policy. Between August 2015 and December 2016 out of 413 potentially “splittable” donors, 252 (61%) were proposed for SLT, of whom 53 (21%) donors were accepted for SLT whereas 101 (40.1%) were excluded because of donor characteristics and 98 (38.9%) for absence of suitable pediatric recipients. The SLT rate augmented from 6% to 8.4%. Children undergoing SLT increased from 49.3% to 65.8% ( $P = .009$ ) and the pediatric LT-waiting list time dropped (229 [10-2121] vs 80 [12-2503] days [ $P = .045$ ]). The pediatric (4.5% vs 2.5% [ $P = .398$ ]) and adult (9.7% to 5.2% [ $P < .001$ ]) LT-waiting list mortality reduced; SLT outcomes remained stable. Retransplantation (HR = 2.641,  $P = .035$ ) and recipient weight >20 kg (HR = 5.113,  $P = .048$ ) in LLS, and ischemic time >8 hours (HR = 2.475,  $P = .048$ ) in ERG were identified as predictors of graft failure. A national mandatory-split policy maximizes the SLT donor resources, whose selection criteria can be safely expanded, providing favorable impact on the pediatric LT-waiting list and priority for adult sick LT candidates.

**KEYWORDS**

clinical research/practice, donors and donation, health services and outcomes research, liver transplantation/hepatology, liver transplantation: split, organ allocation, organ procurement and allocation, pediatrics, waitlist management

**1 | INTRODUCTION**

Over the past few years, the transplant community has made great efforts to increase the pediatric priority in liver organ allocation; however, the mortality of children candidates for liver transplantation (LT), who are disadvantaged because of the lack of size-matched donors, has been steady at approximately 10% every year.<sup>1,2</sup> Split liver transplantation (SLT) was introduced to expand the pool of grafts available for pediatric recipients, providing a left lateral segment (LLS) to a child and an extended-right graft (ERG) to an adult recipient.<sup>3</sup> After the initial splitting experience, advances in surgical techniques and a better understanding of recipient/donor matching led to excellent SLT outcomes both in pediatric and adult recipients.<sup>4-9</sup>

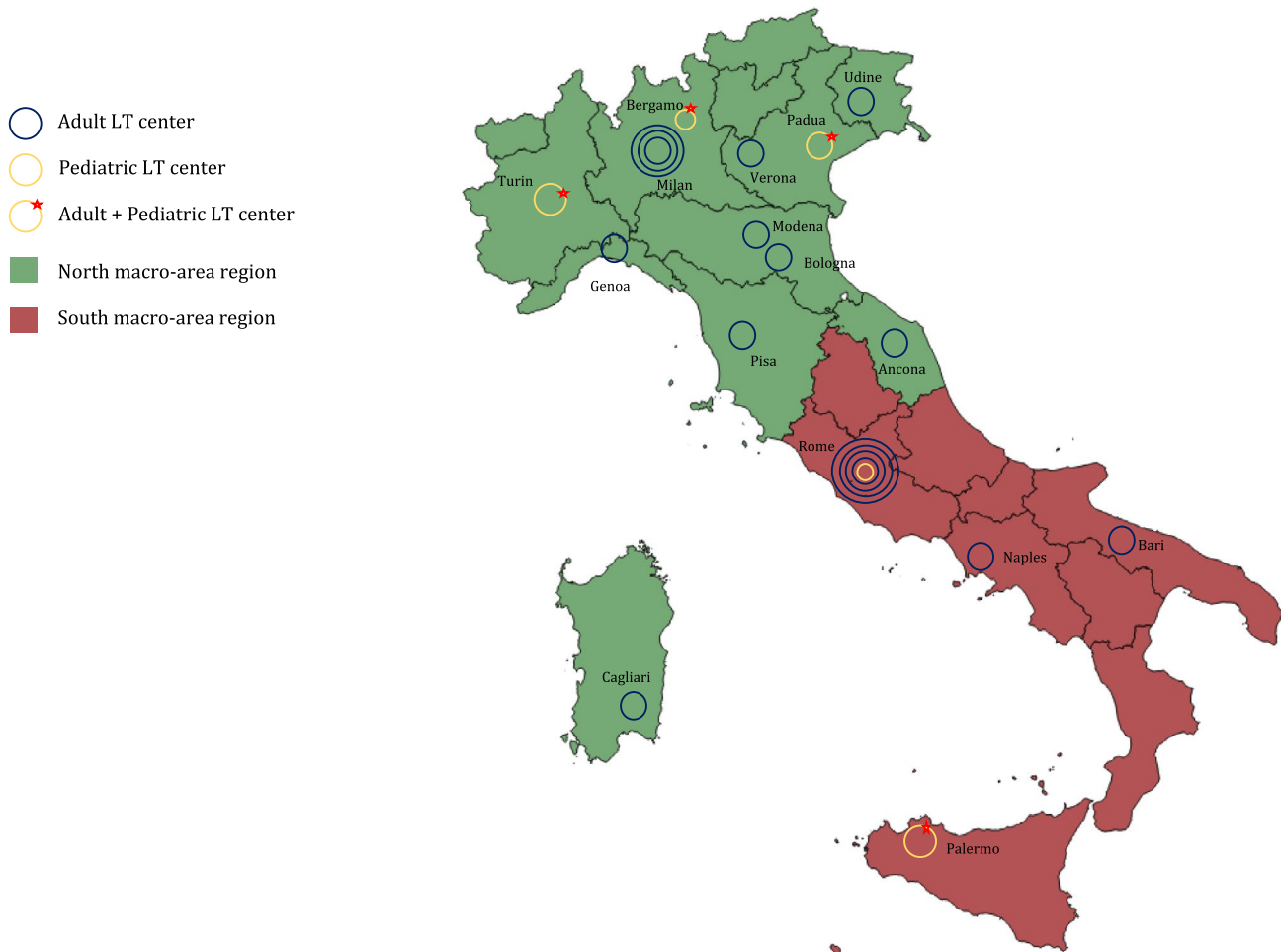
Different organ allocation systems encouraged the implementation of SLT to expand the graft availability from deceased donors for children, without disadvantaging adult LT candidates.<sup>10</sup> The SLT rate varies worldwide: in Europe, SLT represents approximately 6% of all LT.<sup>11</sup> In the United States, SLT comprises approximately 1% of all LT, despite the fact that it is estimated that 20% of deceased donors meet United Network of Organ Sharing (UNOS) guidelines for split livers.<sup>12</sup> In Italy, after the encouraging results of the initial SLT experience of the North Italian Transplant programme,<sup>13</sup> since 2015 the National Transplantation Centre (CNT) in collaboration with the Italian College

of Liver Transplantation Programmes defined a mandatory-split liver policy (SLP) in order to increase the number of splitting procedures nationwide and to reduce pediatric LT-waiting list mortality.

This study aims to analyze liver allocation in Italy after the introduction of the new SLP and its impact on the pediatric/adult LT-waiting list and on SLT outcomes.

**2 | MATERIALS AND METHODS****2.1 | Liver allocation policy in Italy**

In Italy there are 21 LT centers divided into 13 regions governed by the CNT network and grouped into two macro-areas (Figure 1). Since the CNT's establishment, liver allocation policies have seen several modifications. The first national SLT allocation program was approved in 2006; transplant centers could voluntarily decide whether or not to participate. At that time, donors aged  $\leq 14$  years were preferentially allocated to pediatric recipients ( $< 18$  years), whereas donors  $\geq 15$  years were allocated to adults. Donors aged 10-50 years with stable hemodynamics, intensive therapy unit (ITU)-stay  $\leq 5$  days, transaminases  $\leq 3$  times normal, and absence of steatosis on the ultrasound scan were defined as “splittable.” The decision of whether or not to perform the splitting procedure was the choice of the LT center to which the graft was assigned.



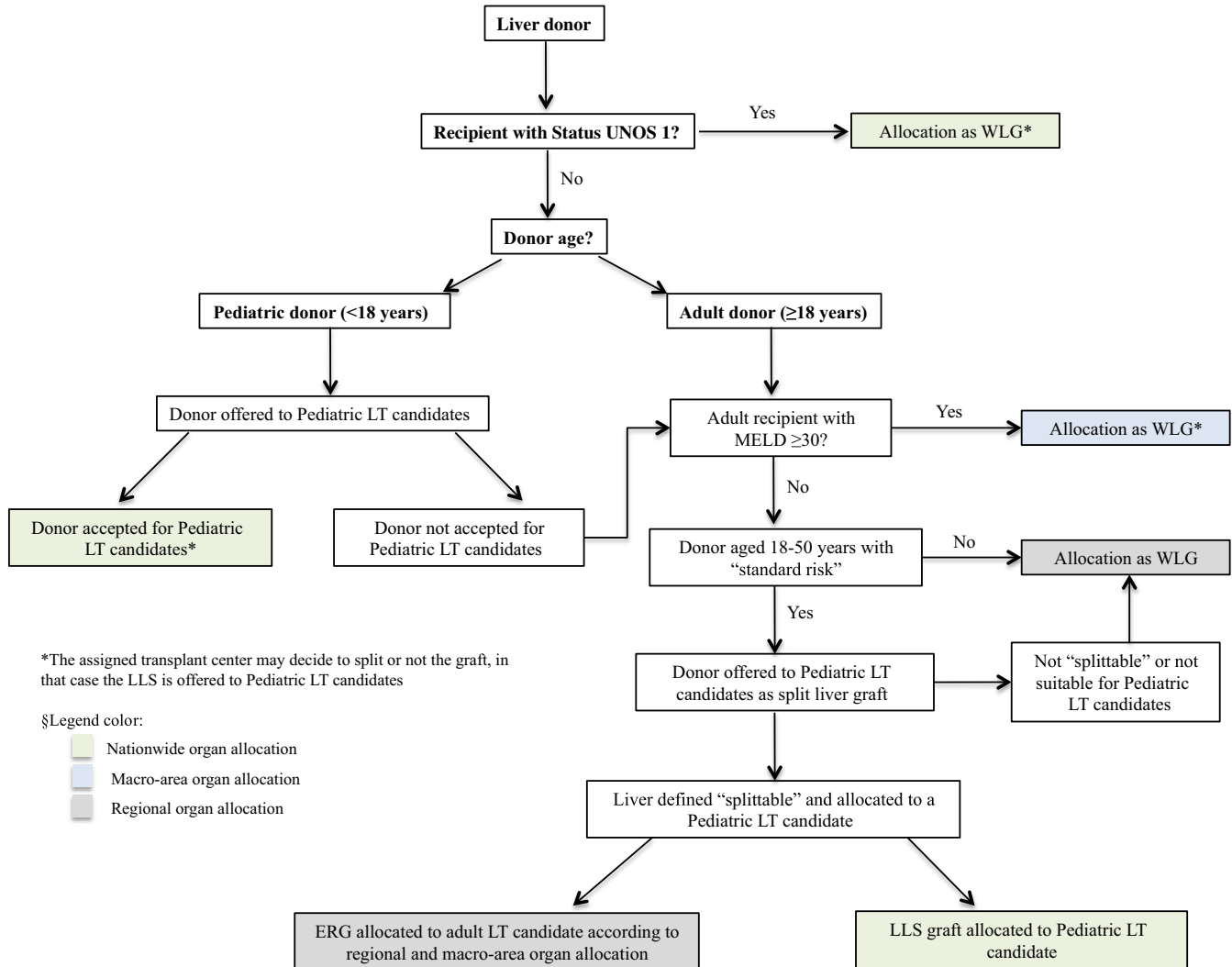
**FIGURE 1** Italian adult and pediatric liver transplant centers. In Italy there are 21 LT centers divided into 13 regions governed by the National Transplantation Centre network and grouped into two macro-areas (north macro-area and south macro-area). Pediatric LTs are performed in 5 centers, of which one center performs only pediatric transplantation (Bambino Gesù Children's Hospital IRCCS of Rome) and 4 centers routinely perform adult and pediatric LT (Riuniti Hospital of Bergamo, University of Padua, Molinette Hospital of Turin, Istituto Mediterraneo per i Trapianti e Terapie ad Alta Specializzazione of Palermo). LT, liver transplantation [Color figure can be viewed at [wileyonlinelibrary.com](http://wileyonlinelibrary.com)]

In 2015, a consensus redefined the Italian criteria for LT candidate stratification not only based on urgency but also on the principles of utility and transplant benefit. The current liver allocation system is based on the Model for End-Stage Liver Disease (MELD)/Italian Score for Organ Allocation (ISO), which is defined by biochemical MELD and exceptions.<sup>14</sup> At present, liver grafts are shared according to the following principles: (1) nationwide, for (a) UNOS status 1 patients; (b) pediatric candidates according to the pediatric LT allocation system<sup>15</sup>; (2) macro-areas for adult LT candidates with MELD  $\geq 30$ ; and (3) regionally for adult patients with MELD  $< 30$ .<sup>14</sup> Additionally, the age of the donors preferentially assigned to pediatric recipients increased from 14 to 17 years and a national mandatory SLP was adopted. In the new SLP, all deceased donors aged 18-50 years with standard risk (defined as the absence of potential transmissible infections or neoplastic diseases) are mandatorily offered to pediatric transplant centers according to the pediatric national LT-waiting list<sup>15</sup> unless a UNOS 1 status or MELD  $\geq 30$  adult

candidate is on the waiting list. If the deceased donor is "splittable," the LLS graft is allocated to a pediatric recipient. According to the adult rules, the ERG is then allocated to a recipient not only on the basis of the MELD/ISO score<sup>14</sup> but also taking into account clinical parameters and donor-to-recipient size matching (Figure 2).

## 2.2 | Study design

This study analyzed all deceased donors used in Italy for LT after the introduction of the new SLP and all recipients transplanted with LLSs and ERGs derived from split procedures. For the outcome analysis, the same number of SLTs performed consecutively before the introduction of the new SLP was used as a control group. To evaluate the impact of the new SLP, data from adult and pediatric LT-waiting lists as well as data on living donor liver transplantation (LDLT) activity were considered. Organ allocation, donor, recipient, and surgical data were recovered from the CNT prospective



**FIGURE 2** The new Italian liver allocation policy. The current Italian allocation policy stems from a revision done in 2015 and liver grafts are shared according to the following principles: (1) nationwide, for (a) UNOS status 1 patients (longest waiting first); (b) pediatric candidates according to the pediatric LT allocation system; (2) macro-areas for adult LT candidates with MELD scores  $\geq 30$  (longest waiting first); and (3) regionally for adult patients with MELD scores  $< 30$  according to the “Italian Score for Organ Allocation (ISO).” In the new split liver policy, all deceased donors between 18 and 50 years of age with standard risk (defined as the absence of potential transmissible infections or neoplastic diseases) are mandatorily offered to pediatric LT candidates as left lateral segment (LLS) unless a UNOS status 1 patient or MELD  $\geq 30$  adult candidate is on the waiting list. If the deceased donor is “splittable,” the LLS is allocated to a pediatric recipient according to the pediatric national waiting list, and the ERG is allocated to the adult LT candidate following the regional and macro-area organ allocation. If the deceased donor is defined as “not splittable,” the organ is used for whole graft LT in adult recipients according to the regional organ allocation system. ERG, extended right graft; LLS, left-lateral segment; LT, liver transplantation; MELD, Model for End-Stage Liver Disease; UNOS United Network of Organ Sharing; WLG, whole liver graft [Color figure can be viewed at [wileyonlinelibrary.com](http://wileyonlinelibrary.com)]

databases and retrospectively analyzed. To define the impact of the split liver procuring centers, the pediatric centers, which performed all split procedures, were stratified according to the number of split procurements performed/year (high-volume,  $\geq 15$  procedures; low-volume,  $< 15$  procedures).

### 2.3 | Splitting technique

Since the beginning of the Italian SLT experience dating back to the mid-1990s, split liver has been performed in situ by a surgical team composed of a pediatric and an adult transplant surgeon. Ex situ split

is carried out only if the in situ procedure might compromise the recovery of other organs (ie, donor hemodynamic instability) or for intraoperative technical issues, which did not allow the in situ technique.

Before 2015, parenchymal transection was preferentially performed using the transumbilical technique<sup>16</sup> and the celiac tripod was kept in continuity with the left hepatic artery. According to the new SLP, parenchymal transection (transumbilical or transhilar<sup>17</sup>) and vessels' division are decided in agreement between pediatric and adult surgeons intraoperatively. The celiac tripod can be assigned either to the LLS or the ERG according to (1) donor-to-recipient size matching, (2) donors' vascular anatomy (vessels' sizes, number of branches,

segment IV branches' origin), and (3) recipients' vascular anatomy and clinical status (urgency, retransplantation, hepatic artery thrombosis). The main portal vein is assigned to the ERG and the left portal vein to the LLS. Only in case of disagreement regarding vessels' division, the final decision is taken by the adult center for donor  $\geq 18$  years, whereas by the pediatric centers for donor  $< 18$  years. Intraoperative cholangiography is not routinely performed.

## 2.4 | Statistical analysis

Statistical analyses were performed using IBM SPSS Statistics, version 22.0 (IBM, Chicago, IL). Donor/recipient characteristics and clinical data are shown (wherever applicable) as either median with range or mean  $\pm$  standard deviation. Univariate data were analyzed using the Mann-Whitney test and Fisher's exact test. A *P* value of  $< .05$  was considered significant. Normal distribution continuous data were analyzed by parametric test (Student's *t* test). Survival rates were calculated using the Kaplan-Meier method for univariate analysis and Cox-regression for multivariate analysis.

## 3 | RESULTS

### 3.1 | Liver allocation and split liver procurement

Between August 2015 and December 2016, 1537 cadaveric donors were used for LT, including 58 (3.8%) pediatric donors ( $< 18$  years), 1066 (69.4%) adults  $> 50$  years and/or nonstandard risk, and 413 (26.8%) adults aged 18-50 years with standard risk. In the latter group, 161 (39%) donors were allocated to UNOS status 1 or MELD  $\geq 30$  patients; the remaining 252 (61%) were proposed for SLT, of whom 53 (21%) were accepted. One hundred and one (40.1%) were excluded from split because of the clinical characteristics of the donor at the time of offer ( $n = 85$ ) or at laparotomy ( $n = 16$ ). In 88 cases (34.9%), the split procedure was not performed for absence of suitable pediatric recipient, and in 10 cases (4%) due to logistic issues (Table 1). All donors refused for SLT were allocated to adult recipients as a whole graft. The donors accepted for SLT were significantly younger, had lower body weights, and received less vasopressor compared to those not split (Table 2).

In the pediatric donor group ( $n = 58$ ), 45 (78%) livers were transplanted as whole grafts into 26 (58%) pediatric and 19 (42%) adult recipients. In the other 11 (19%) cases, livers were split generating 10 LLSs, 10 ERGs, one left and one right lobes. Two (3%) pediatric grafts were reduced on the back table. In 4 cases, split liver procurements were performed in donors  $> 50$  years. The clinical characteristics of split liver donors  $< 18$  and  $> 50$  years are summarized in Table S1.

In summary, 68 split liver procedures were performed after the introduction of the new SLP, generating one left lobe, one right lobe, 66 LLSs (one LLS was discarded because of vascular injury), and 67 ERGs. For outcomes evaluation, the left and right lobes and two ERGs that were part of multiorgan transplantations were excluded, resulting in 66 LLSs and 65 ERGs enrolled in the study. All LLSs were transplanted

**TABLE 1** Causes of nonsplitting in adult donors offered for split liver transplantation

	Number (%)
At the time of donor offer	171 (85.9)
Donor	
Abnormal LFTs	30 (15.1)
Steatosis on US scan	20 (10.1)
Hemodynamic instability	20 (10.1)
Hepatic lesions on US scan	7 (3.5)
Comorbidities	4 (2)
Prolonged ITU stay	4 (2)
Recipient	
Inadequate donor/recipient size matching	65 (32.7)
No suitable recipients on the waiting list	13 (6.5)
Logistic issue	8 (4)
At donor laparotomy	28 (14.1)
Donor	
Steatosis at liver biopsy	6 (3)
Intraoperative vascular anomalies	6 (3)
Intraoperative hemodynamic instability	4 (2)
Recipient	
Inadequate donor/recipient size matching	10 (5)
Intraoperative logistic issue	2 (1)

ITU, intensive therapy unit; LFTs, liver function tests; US scan, ultrasound scan.

into pediatric recipients. In 57 (87.7%) cases, the ERG was transplanted into adults, and in 8 (12.3%) cases into a child (Table 3). Two children, with UNOS 1 status, received ERGs from donors  $> 18$  years.

The 68 consecutive split liver procedures chosen as the control group were performed between June 2013 and August 2015. In the control group, 49 (72%) split procedures were performed in donors aged 18-50 years, 11 (16.2%) in donors  $< 18$  years, and 8 (11.8%) in donors  $> 50$  years (Table 3). These were standard split liver procedures in 66 (97.1%) cases and full-left/full-right split in 2 (2.9%) cases. One LLS graft was not transplanted because of vascular injury. Similar to the study group, left and right lobes and one ERG used for combined liver-pancreas transplantation were excluded, resulting in 65 LLSs and 65 ERGs enrolled in the study.

The clinical characteristics of the donors who underwent split liver procurement in the new and old SLP were similar except for the ITU-stay, which was longer in the study period (3 [0-19] vs 2 [0-11] days, *P* = .039) (Table 4).

### 3.2 | Outcomes of SLT

#### 3.2.1 | Left-lateral segment graft transplantation

Table 5 shows the surgical and recipient characteristics of LLS transplantation. During the study period, the LLS recipients were

**TABLE 2** Characteristics of donors offered for split liver transplantation under the new split liver policy

Variables	Total donor offered for SLT	Donor refused for donor characteristics <sup>a</sup>	Donor refused for absence of suitable recipients <sup>a</sup>	Donors accepted for SLT	P value
Number (%)	252	101 (40.1%)	98 (38.9%)	53 (21%)	-
Age (years)	41 (18-50)	43.5 (18-50)	41 (18-50)	38 (18-50)	.044
Gender (female)	88 (34.9%)	38 (37.6%)	29 (29.6%)	21 (39.6%)	.366
BMI	25 (16-46)	25 (18-46)	26 (18-46)	24 (18-32)	<.0001
Weight (kg)	75 (30-150)	75 (42-120)	80 (30-150)	70 (50-90)	<.0001
Height (cm)	170 (130-192)	170 (146-190)	175 (130-192)	170 (150-190)	.158
Blood group					
O	94 (37.3%)	45 (44.6%)	22 (22.4%)	27 (50.9%)	
A	103 (40.9%)	37 (36.7%)	50 (51.0%)	16 (30.2%)	
AB	14 (5.6%)	5 (4.9%)	9 (9.2%)	0 (%)	.002
B	41 (16.3%)	14 (13.9%)	17 (17.3%)	10 (18.9%)	
Use of vasopressors (yes)	198 (78.6%)	76 (75.2%)	69 (70.4%)	42 (86.8%)	<.0001
Use >1 vasopressors	49 (19.4%)	25 (24.8%)	13 (13.3%)	11 (20.8%)	.088
ITU stay (days)	3 (0-37)	2 (0-37)	3 (0-16)	3 (0-19)	.648
AST (U/L)	45 (7-15285)	55 (9-15285)	40 (7-497)	42 (9-628)	.023
ALT (U/L)	41 (5-5575)	56 (6-5575)	32 (5-971)	34 (9-530)	.035
Total bilirubin (mg/dL)	0.4 (0.1-7.8)	0.4 (0.1-7.8)	0.4 (0.1-3.04)	0.3 (0.1-2.6)	.038
GGT (U/L)	39 (5-988)	42 (5-988)	33 (8-537)	33 (5-624)	.378
Serum sodium (mmol/L)	150 (130-187)	150 (131-183)	151 (130-187)	148 (131-173)	.438
Cause of death					
Cerebrovascular accident	112 (44.4%)	40 (39.6%)	46 (46.9%)	26 (49.1%)	
Trauma	93 (36.9%)	38 (37.6%)	37 (37.8%)	18 (34%)	.248
Anoxia	38 (15.1%)	20 (19.8%)	12 (12.2%)	6 (11.3%)	
Others	9 (3.6%)	3 (3%)	3 (3.1%)	3 (5.7%)	

ALT, alaninoaminotransferase; AST, aspartatoaminotransferase; GGT, gamma-glutamyltransferase; BMI, body mass index; ITU, intensive therapy unit; LFTs, liver function tests; US scan, ultrasound scan.

<sup>a</sup>Liver graft from donor refused for SLT due to donor or recipient characteristics was used as whole liver graft.

significantly younger compared to those transplanted in the control period, including 77.3% vs 58.5% children <24 months of age ( $P = .025$ ).

The overall 1-year patient survivals were 84.8% and 87.7% in the study and control period respectively ( $P = .408$ ); the overall 1-year graft survival was 78.8% for the new SLP and 80% for the old SLP ( $P = .610$ ) (Figure 3).

In the study group, 10 (15.2%) patients died within 1 year from SLT, of whom 5 (50%) were urgent SLT. Of 7 (10.8%) children who died during the old SLP, only one (14.2%) had urgent transplantation. The retransplantation rate was similar in the two groups [4 [6.1%] vs 5 [7.7%] ( $P = .712$ )] (Table 6). The characteristics of the deceased and retransplanted LLS recipients are detailed in Table S2.

Within the first year of SLT, postoperative technical complications were comparable in the two periods (20 [30.3%] vs 24 [36.9%], [ $P = .529$ ]) (Table S3).

### 3.2.2 | Extended right graft transplantation

The technical and recipient characteristics of ERG transplantation were comparable in the two periods (Table 7). The 1-year patient survival was 93.8% in both groups ( $P = .538$ ), whereas 1-year graft survival was 86.2% after the introduction of the new SLP and 83.1% in the control period ( $P = .753$ ) (Figure 4).

In the study group, 4 (6.2%) patients died within 1 year of SLT, of whom 1 (25%) was transplanted with UNOS 1 status; of 4 (6.2%) deceased patients in the control group, none received urgent transplantation. The retransplantation rate was similar in the two groups (5 [7.7%] vs 7 [10.8%] ( $P = .638$ )) (Table 8). The characteristics of the deceased and retransplanted ERG recipients are reported in Table S4.

Postoperative complications were observed in 15 (23%) ERG recipients transplanted in the new SLP and in 24 (36.9%) cases in the control group ( $P = .085$ ) (Table S5).

**TABLE 3** Liver donor allocation during the new and old split liver policy

New split liver policy	Whole liver transplantation			Split liver transplantation							
	Type of deceased donors	Total		LLS		ERG		Left lobe		Right lobe	
		Pediatric recipient	Adult recipient	Pediatric recipient	Adult recipient	Pediatric recipient	Adult recipient	Pediatric recipient	Adult recipient	Pediatric recipient	Adult recipient
Pediatric (<18 y)	58 (3.8%)	47	28 <sup>a</sup>	19	22	10	-	4	1	-	1
Adult 18-50 y, standard risk	413 (26.8%)	360	-	360	105	52	-	51 <sup>b</sup>	-	-	-
Adult >50 y, non-standard risk	1066 (69.4%)	1062	6	1056	8	4	-	4	-	-	-
<b>Total</b>	<b>1537</b>	<b>1469</b>	<b>34</b>	<b>1435</b>	<b>135</b>	<b>66</b>	<b>-</b>	<b>59</b>	<b>1</b>	<b>-</b>	<b>1</b>
Enrolled in the outcome analysis	-	-	-	-	-	66	-	65	-	-	-
Old split liver policy	Whole liver transplantation			Split liver transplantation							
	Type of deceased donors	Total		LLS		ERG		Left lobe		Right lobe	
		Pediatric recipient	Adult recipient	Pediatric recipient	Adult recipient	Pediatric recipient	Adult recipient	Pediatric recipient	Adult recipient	Pediatric recipient	Adult recipient
Pediatric (<18 y)	96 (4.4%)	85	41	44	22	11	-	7	-	-	-
Adult 18-50 y, standard risk	574 (26.2%)	525	6	519	97	46	-	44 <sup>c</sup>	1	1	2
Adult >50 y, nonstandard risk	1518 (69.4%)	1510	4	1506	16	8	-	7	-	-	-
<b>Total</b>	<b>2188</b>	<b>2120</b>	<b>51</b>	<b>2069</b>	<b>135</b>	<b>65</b>	<b>-</b>	<b>58</b>	<b>1</b>	<b>1</b>	<b>2</b>
Enrolled in the outcome analysis	-	-	-	-	-	65	-	65	-	-	-

ERG, extended right graft; LLS, left-lateral segment; y, years.

<sup>a</sup>Two liver grafts from pediatric donor were reduced on backtable.

<sup>b</sup>2 ERGs combined with kidney transplantation were excluded from the outcome analysis.

<sup>c</sup>1 ERG combined with pancreas transplantation was excluded from the outcome analysis.

**TABLE 4** Split liver donor characteristics under the new and old split liver policy

Donor variables	New split liver policy	Old split liver policy	P value
Number	66	65	
Age (years)	36 (5-66)	33 (8-58)	.836
<18 years	10 (15.4%)	11 (16.7%)	
18-50 years	52 (80%)	46 (70.8%)	
>50 years	4 (6.2%)	8 (12.3%)	
Gender (female)	25 (51%)	24 (49%)	1.000
BMI	23 (16-32)	23 (19-33)	.692
Weight (kg)	68 (25-90)	70 (42-101)	.421
Height (cm)	170 (125-190)	170 (145-194)	.245
Blood group			
O	34 (51.5%)	30 (46.2%)	
A	22 (33.3%)	30 (46.2%)	.211
B	10 (15.2%)	5 (7.7%)	
Use of vasopressors	45 (66.7%)	35 (53.8%)	.155
Use of >1 vasopressors	12 (18.2%)	11 (16.9%)	.291
ITU stay (days)	3 (0-19)	2 (0-11)	.039*
AST (U/L)	40 (9-628)	42 (8-357)	.639
ALT (U/L)	29 (9-530)	34 (8-269)	.978
Total bilirubin (mg/dL)	0.5 (0.1-3)	0.4 (0.1-8)	.078
GGT (U/L)	30 (5-624)	28 (5-545)	.712
Serum sodium (mmol/L)	148 (131-173)	148 (124-193)	.363
Cause of death			
Cerebrovascular	31 (46.9%)	33 (50.8%)	
Trauma	24 (36.4%)	21 (32.3%)	.632
Anoxia	7 (10.6%)	10 (15.4%)	
Others	4 (6.1%)	1 (1.5%)	

ALT, alaninoaminotransferase; AST, aspartatoaminotransferase; GGT, gamma-glutamyltransferase; BMI, body mass index; ITU, intensive therapy unit.

### 3.2.3 | Univariate and multivariate analysis

By log-rank test, no significant differences in 1-year patient or graft survivals for LLS and ERG transplantations were observed, according to the centers' split liver procurement volume (Table S6).

Among LLS transplantation, re-transplantation vs first transplantation (HR = 3.349,  $P = .006$ ), recipient body weight >20 kg vs ≤20 kg (HR = 4.088,  $P = .001$ ), and donor-to-recipient weight ratio (DRWR) ≤4 vs >4 (HR = 1.380,  $P = .018$ ) were risk factors for graft failure by univariate analysis (Table S7). In the multivariate analysis, recipient body weight >20 kg vs ≤20 kg (HR = 5.113,  $P = .048$ ) and retransplantation as an indication of SLT (HR = 2.641,  $P = .035$ ) were predictors of graft failure (Figures S1, S2).

In ERG transplantation, cold ischemic time (CIT) >8 hours vs ≤8 hours (HR = 2.574,  $P = .039$ ) and donor ITU-stay >5 days vs

≤5 days (HR = 1.946,  $P = .046$ ) were identified as risk factors for graft loss according to the univariate analysis (Table S8), and only CIT >8 hours vs ≤8 hours (HR = 2.475,  $P = .048$ ) in the multivariate analysis (Figure S3).

### 3.3 | Impact of the new split liver policy on the LT-waiting list

Since the new SLP was introduced, the SLT rate increased from 6% to 8.4% and a median of 2 SLTs/week were performed. Compared to the old SLP, the same number of SLTs was achieved in a shorter period (16.5 months in the new SLP vs 26.4 months in the old SLP).

During the study period, 114 pediatric LTs were performed, including 75 (65.8%) SLTs, 34 (29.8%) whole LTs, and 5 (4.4%) LDLTs. During the control period, 150 pediatric LTs were performed, including 74 (49.3%) SLTs, 51 (34%) whole LTs, and 25 (16.7%) LDLTs.

After the introduction of the new SLP, the total number of children receiving a split graft increased from 49.3% to 65.8% ( $P = .009$ ) and the LDLT rate significantly reduced compared to the control period (4.4% vs 16.7%,  $P = .0016$ ).

The median time on the LT-waiting list reduced from 229 (10-2121) days to 80 (12-2503) days ( $P = .045$ ). Child dropout from the LT-waiting list decreased from 2.5% (5/200) to 1.8% (3/163) ( $P = .735$ ), thus the pediatric waiting list mortality was 4.5% (9/200) in the old SLP and 2.5% (4/163) in the new SLP ( $P = .398$ ). Of 4 children awaiting LT who died in the study period, 2 (50%) patients were candidates for urgent re-LT. After the introduction of the new SLP, a median of 2 pediatric LTs/week were performed compared to 1 pediatric LT/week during the control period. Moreover, during the study period, one donor every 2 days was offered for SLT to the pediatric LT-waiting list and one split graft/weekly was accepted for a child awaiting LT.

During the new SLP, 1503 adult LTs were performed, including 1435 (95.5%) whole LTs, 60 (4%) SLTs, and 8 (0.5%) LDLTs. In the control period, 2148 LTs were carried out, including 2069 (96.3%) whole LTs, 61 (2.8%) SLTs, and 18 (0.8%) LDLTs. After the new SLP was adopted, the SLT rate in adult recipients increased from 2.8% to 4% ( $P = .058$ ) and the median time from listing to LT remained stable (282 [0-5951] vs 299 [0-5095] days during the study and control period respectively [ $P = .142$ ]). Since the introduction of the new SLP, the adult LT-waiting list mortality significantly reduced from 9.7% (369/3814) to 5.2% (149/2891) ( $P < .001$ ) and the adult LT-waiting list dropout rate remained stable (7.1% [204/2891] vs 6.1% [232/3814] in the new and old allocation programs, respectively [ $P = .109$ ]). During the study period, a median of 24 adult LTs/week was performed, with 21 adult LTs/week in the control group.

## 4 | DISCUSSION

Improving SLT programs has attracted great interest in recent years as a method of reducing pediatric LT-waiting list mortality.<sup>10</sup>



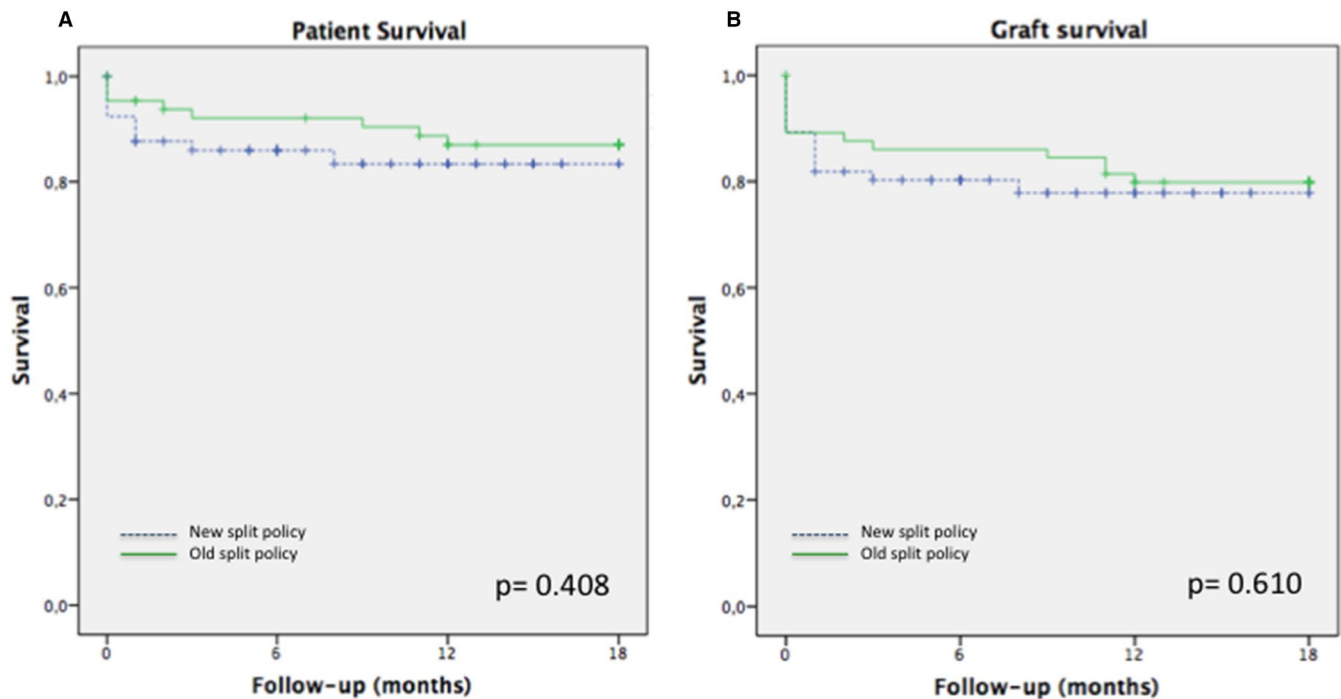
**TABLE 5** Surgical and recipient characteristics of left-lateral segment transplantation

Variables	New split liver policy (n = 66)	Old split liver policy (n = 65)	P value
Surgical variables			
In situ/ex situ split	64 (97%) / 2 (3%)	63 (96.9%) / 2 (3.1%)	1.000
Cold ischemic time (hours)	6 (3-10)	5 (1-8)	.108
Warm ischemic time (minutes)	47 (24-110)	40 (30-121)	.238
Recipient variables			
Age (years)	1.1 (0.1-11.2)	2.1 (0.1-12.1)	.043
Gender (female)	33 (50%)	36 (55.4%)	.601
BMI	16.4 (13 -23.8)	16.5 (11.3-22.3)	.848
Weight (kg)	8.7 (4-35)	12 (6-30)	.020
Height (cm)	70.1 (53-135)	84 (58-152)	.014
Blood group			
O	28 (42.4%)	22 (33.8%)	
A	23 (34.8%)	33 (50.8%)	.271
B	12 (18.2%)	7 (10.8%)	
AB	3 (4.5%)	3 (4.6%)	
PELD score	22 (10-43)	22 (12-39)	1.000
UNOS status			
1	8 (12.1%)	7 (10.8%)	
1B	1 (1.5%)	6 (9.2%)	
2A	5 (7.6%)	7 (10.8%)	.344
2B	10 (15.2%)	10 (15.4%)	
3	42 (63.6%)	35 (53.8%)	
Indication for transplantation			
Acute liver failure	6 (9.1%)	3 (4.6%)	
Autoimmune liver disease	2 (3%)	1 (1.5%)	
Cholestatic liver disease	43 (65.2%)	36 (55.4%)	
Tumor	2 (3%)	9 (13.8%)	.074
Metabolic liver disease	7 (10.6%)	6 (9.2%)	
Retransplantation (early/late)	4 (2/2) (6.1%)	10 (1/9) (15.4%)	
Other disease	2 (3%)	-	
Time on waiting list to transplant (days)	36 (1-530)	35 (1-571)	.634

ALT, alaninoaminotransferase; AST, aspartatoaminotransferase; GGT, gamma-glutamyltransferase; BMI, body mass index; PELD, pediatric end-stage liver disease; UNOS, United Network of Organ Sharing.

Although the SLT rate constantly increased in Europe (>400 SLTs/year since 2002),<sup>18</sup> a change in donor demographics resulted in a reduction of deceased liver donors suitable for split procedures. The main issues limiting the expansion of SLT programs worldwide include (1) the need for a national/international organ allocation system with an "intention-to-split" policy, and the cooperation between pediatric and adult LT centers; (2) the lack of international donor selection criteria for SLT; (3) split grafts have been generally perceived by centers as carrying greater morbidity and mortality compared to whole grafts.<sup>10,19,20</sup>

In Italy, the steady increase in average age of deceased donors and the reduction in the number of SLTs causing a lengthening of waiting times for pediatric LT drove the analysis of the Italian SLT data<sup>21-27</sup> and the definition in 2015 of a mandatory SLP, which includes three major steps: first, the CNT offers all donors aged 18-50 years at standard risks to the pediatric transplant centers for SLT; second, the pediatric transplant centers decide if the LLS is suitable for pediatric LT candidates; and third, the ERG, which is considered ab initio fit for transplantation as the pediatric donor selection criteria are more narrowing than those adopted for adults, is allocated to the



**FIGURE 3** Patient (A) and graft (B) survival of left-lateral segment transplantation [Color figure can be viewed at [wileyonlinelibrary.com](http://wileyonlinelibrary.com)]

best-matching adult recipient. Subsequently, the graft “splittability” remains only a technical aspect (ie, vascular anomalies).

In the study period, donors within SLT-criteria accounted for 26% of all liver donors, of which 60% were offered for SLT and of these, 21% were effectively used for SLT. Consequently, the introduction of the new SLP significantly increased the number of donors offered for split procedures and SLT rate represented 8.4% of all LT activity, which is higher compared to the recent split data from the Eurotransplant Area (5%).<sup>28</sup> Despite the expansion of SLT donor criteria, most of the split procedures were performed in young donors, proving that pediatric centers had more opportunities to choose the best donor for children candidates to LT, with high rate of acceptance.<sup>29</sup>

Among donors refused for SLT, 40% were not accepted due to the donor quality and 39% due to the absence of suitable recipients, mainly related to donor/recipient size matching. Interestingly, the donors refused due to the lack of size matching recipients were similar to those accepted for SLT for all clinical variables, except for higher body weight. Therefore, almost 40% of potentially “splittable” donors are currently not used for standard splitting procedure, but might represent a consistent donor pool for full-right/full-left SLT or for international networks of organ sharing.<sup>20,30</sup>

A mandatory SLP has been adopted also in other countries; thus their split liver donor selection criteria are much more strict when compared to these currently used in Italy.<sup>10</sup> In United Kingdom all brain-death donors <40 years, with weight >50 kg, and <5 days of ITU stay are mandatory offered for splitting in absence of superurgent or multivisceral candidates<sup>31</sup>; in France, donors aged <30 years are first proposed to pediatric LT candidates.<sup>32</sup> Contrarily, in the UNOS network splitting is not mandatory and only donors between

**TABLE 6** Causes of death and retransplantation after left-lateral segment transplantation

Variables	New split liver policy (n = 66)	Old split liver policy (n = 65)	P value
Total number of death	10 (15.2%)	7 (10.8%)	.456
Cause of death			
PNF	1 (1.5%)	2 (3.1%)	.619
Sepsis	2 (3.0%)	1 (1.5%)	.568
MOF	5 (7.6%)	2 (3.1%)	.077
Tumor recurrence	0 (0%)	1 (1.5%)	1.000
Pulmonary embolism	1 (1.5%)	0 (1.5%)	.496
Biliary complication	0 (0%)	1 (1.5%)	1.000
Cerebrovascular accident	1 (1.5%)	0 (0%)	.496
Retransplantation	4 (6.1%)	5 (7.7%)	.712
Cause of retransplantation			
PNF/DNF	1 (1.5%)	3 (4.6%)	.302
Hepatic artery thrombosis	2 (3%)	0 (0%)	.496
Portal vein thrombosis	1 (1.5%)	1 (1.5%)	.991
Chronic rejection	0 (0%)	1 (1.5%)	.312

DNF, delayed nonfunction; LLS, left-lateral segment; MOF, multiorgan failure; PNF, primary nonfunction.

18-40 years of age with no more than a single vasopressor, transaminases  $\leq 3$  times normal, and body mass index  $\leq 28$  are considered for SLT, but are not primarily offered to pediatric centers<sup>2</sup>; the result is

**TABLE 7** Surgical and recipient

characteristics of extended right graft transplantation

Variables	New split liver policy (n = 65)	Old split liver policy (n = 65)	P value
Surgical variables			
In situ/ex situ split	58 (89.2%)/7 (10.8%)	59 (90.8%)/6 (9.2%)	.778
Cold ischemic time (hours)	7 (4-11)	6 (3-15)	.125
Warm ischemic time (minutes)	42 (22-165)	35 (22-80)	.207
Recipient variables			
Age (years)	53 (2-71)	53 (8-69)	.714
Gender (female)	29 (44.6%)	38 (58.5%)	.160
BMI	23.2 (13.4-32)	23.5 (14.3-43.3)	.257
Weight (kg)	64 (11-103)	65 (22-109)	.782
Height (cm)	168 (88-183)	165 (86-180)	.279
Blood group			
O	30 (46.2%)	21 (32.3%)	
A	22 (33.8%)	37 (56.1%)	
B	12 (18.5%)	6 (9.2%)	.040
AB	1 (1.5%)	1 (1.5%)	
Biochemical MELD/PELD	18 (10-35)	20 (9-42)	1.000
UNOS status			
1	2 (3.1%)	3 (4.6%)	
2A	5 (7.7%)	8 (12.3%)	.824
2B	38 (58.5%)	35 (53.8%)	
3	20 (30.8%)	19 (29.2%)	
Indication for SLT			
Alcoholic liver disease	10 (15.4%)	8 (12.3%)	
Autoimmune liver disease	12 (18.5%)	9 (13.8%)	
Cholestatic liver disease	4 (6.2%)	2 (3.1%)	
Tumor	16 (24.6%)	24 (36.9%)	.109
Viral-related cirrhosis	16 (24.6%)	7 (10.8%)	
Cryptogenic cirrhosis	1 (1.5%)	5 (7.7%)	
Metabolic liver disease	5 (7.7%)	4 (6.2%)	
Retransplantation	0 (0%)	1 (1.5%)	
Others	1 (1.5%)	5 (7.7%)	
Time on waiting list to transplant (days)	91 (1-1682)	74 (1-1479)	.764

ALT, alaninoaminotransferase; AST, aspartatoaminotransferase; GGT, gamma-glutamyltransferase; BMI, body mass index; MELD, model for end-stage liver disease; LFTs, liver function tests; PELD, pediatric end-stage liver disease; UNOS, United Network of Organ Sharing.

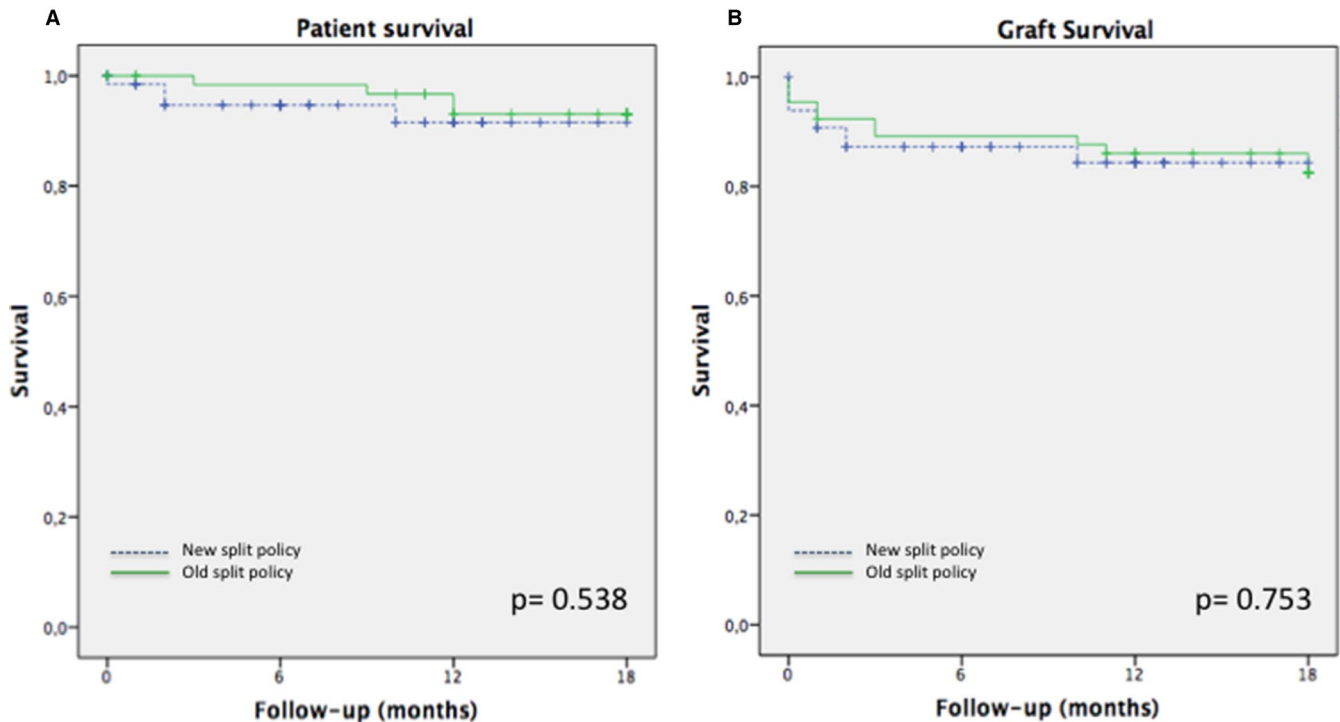
that only 6.3% of liver donors meet the SLT criteria and only 3.8% of these are utilized for SLT.<sup>33</sup>

Of the criteria used to select donors suitable for split procedures, donor age >50 years and <10 years has been recognized as a crucial risk factor for SLT graft failure.<sup>18</sup> In our series, donors aged >50 years were used for SLT in only four UNOS 1 status children because of the impossibility of waiting longer for a graft; thus the “adapted” allocation of ERGs guaranteed good outcomes in all adults.

Notwithstanding the promising results on the use of partial grafts from pediatric donors,<sup>24</sup> presently in Italy split liver procedures in

donors <18 years are not mandatory. However, our data confirmed that SLTs from young donors have favorable outcomes,<sup>34</sup> suggesting that split procedures should be mandatory also in pediatric donors (at least for body weight >40 kg), limiting the use of reduced grafts to selected cases.

Our experience showed that the presence of a national organ-exchange organization and the collaboration between pediatric and adult centers were key factors to maximize the use of donors without compromising outcomes.<sup>19,35-37</sup> The availability of surgeons trained to perform split procedures in most of the Italian transplant centers



**FIGURE 4** Patient (A) and graft (B) survival of extended right graft transplantation [Color figure can be viewed at [wileyonlinelibrary.com](http://wileyonlinelibrary.com)]

was also essential to implement the national SLT programme.<sup>20</sup> The standardization of surgical techniques, consisting of in situ split procedures<sup>38</sup> and rules for vascular structures' division, resulted in limited CIT (organs were shipped from the donor hospital to the recipient center) and low rates of vascular complications, which represent the most common issues in SLT.<sup>8,28,39-41</sup> These good outcomes justify the enormous logistical efforts of the in situ split technique related to the prolonged donor surgery<sup>42</sup>; hence, a previous Italian experience reported that standard in situ split procurement added  $156 \pm 33$  minutes to the donor operation, whereas using full-right/full-left split procedure required  $185 \pm 50$  more minutes.<sup>27</sup>

The introduction of the new SLP did not have an impact on SLT morbidity and mortality, which were comparable to the control period. Children transplanted with LLS showed 1-year patient survival of 85% and graft survival of 79%, in line with the European Liver Transplant Registry<sup>18</sup> (patient survival: 89.1%; graft survival: 83.3%) and UNOS<sup>43</sup> data (graft survival: 75.5%). Adults receiving ERG had a 1-year patient survival of 94% and a graft survival of 86%, similar to those reported in literature.<sup>8</sup>

In children receiving LLS, retransplantation and recipient body weight  $>20$  kg were the only risk factors of graft failure, confirming that the recipient status significantly influences SLT outcomes and adequate donor/recipient size matching is essential to avoid "small-for-size syndrome."<sup>44</sup> In ERG transplantation, only CIT  $>8$  hours increased the risk of graft failure in agreement with the UNOS data.<sup>43</sup>

After the new SLP, the number of liver offers to LT pediatric candidates significantly improved (proportionally to the Italian donation rate), giving more opportunities to children to receive SLT; in consequence the median pediatric LT-waiting list time significantly decreased

**TABLE 8** Causes of death and retransplantation after extended right graft transplantation

Variables	New split liver policy (n = 65)	Old split liver policy (n = 65)	P value
Total number of death	4 (6.2%)	4 (6.2%)	1.000
Cause of death			
Sepsis	2 (3.1%)	1 (1.5%)	.559
Myocardial infarction	1 (1.5%)	0 (0%)	.315
Tumor recurrence	1 (1.5%)	1 (1.5%)	1.000
MOF	0 (0%)	2 (3%)	.496
Retransplantation	5 (7.7%)	7 (10.8%)	.638
Cause of retransplantation			
PNF/DNF	3 (4.6%)	3 (4.6%)	1.000
Hepatic artery thrombosis	2 (3.1%)	2 (3.1%)	1.000
Biliary complications	0 (0%)	2 (3.1%)	.154

DNF, delayed nonfunction; ERG, extended right graft; MOF, multiorgan failure; PNF, primary nonfunction.

(from 7 months to less than 3 months), being considerably shorter compared to other series (ie, in the US  $>40\%$  of children spend over a year on the waiting list).<sup>45</sup> Likewise, the pediatric LT-waiting list mortality rate was 2.5%, remarkably lower compared to other reports (7-12%),<sup>1,2,10</sup> and in half of the cases death occurred in children awaiting urgent re-LT. Because in Italy the majority of children are transplanted

with split grafts from deceased donors, we believe that the low pediatric LT-waiting list mortality is mainly related to the pediatric priority in organ allocation. Additionally, in the observational period the LDLT activity reduced, thus the paucity of cases and the different centers' policy on the use of living-related resource do not allow to interpret data. Hence, the SLT rate is influenced not only by the adoption of mandatory-SLP and donation rate but also by the pediatric LT-waiting list demand (which is variable over the time) and the use of LDLT resource.

On the adult side, the prioritization of UNOS 1 status and MELD  $\geq 30$  LT candidates ensured that the mandatory-SLP did not have a negative impact on the adult LT-waiting list mortality and dropout rate. The decreased adult LT-waiting list mortality rate observed in the study period was not related to the new SLP, but it was caused by the higher number of adult LT performed and the introduction of the new liver allocation model (MELD/ISO score), which includes MELD exception and hepatocellular carcinoma prioritization.<sup>14</sup> In the current system, transplant centers accepting ERG could choose the adult recipient based not only on the MELD/ISO score but also on the recipient clinical status and the donor/recipient size matching, resulting in an increased rate of partial grafts accepted for adults. Moreover, the presence of urgent/MELD  $\geq 30$  adult candidates eliminates the obligation of splitting but does not prohibit the possibility for those to receive a SLT (as occurred in 2 cases in our study). ERGs were allocated to a relatively low biochemical MELD score (18 [10-35]), being in line with other series.<sup>46</sup> Limitations of our study consist in matching the new SLP with an historical control group and to not compare ERG with whole graft; thus, similar 10-years outcomes of ERG and whole LT performed in Italy were recently reported.<sup>9</sup>

In conclusion, the current is the first report of a national mandatory SLP. The first donor offer to pediatric LT candidate increases the number of children receiving SLT, resulting in low LT-waiting list dropout and mortality rate, which is mainly limited to urgent transplantation. The prioritization of organ allocation to UNOS 1 status and MELD  $\geq 30$  adult candidates ensure that mandatory SLP does not harm the adult LT-waiting list. Split liver donor criteria can be safely expanded, providing optimal graft and patient SLT outcomes. Thus, a significant proportion of potentially "splittable" donors is currently not used for conventional split procedures but might be employed for adult-to-adult SLT or for international organ networks in order to optimize liver allograft resources.

## ACKNOWLEDGMENTS

No funding sources were employed. The authors would like to acknowledge Dr. Andrea Ricci for his assistance with statistics and data analysis.

## AUTHOR CONTRIBUTIONS

Angelico R: designed the work, analyzed and interpreted data, draft the work, approved the final version, and reviewed the accuracy and integrity of the work.

Trapani S: designed the work, analyzed and interpreted data, drafted the work, approved the final version, and reviewed the accuracy and integrity of the work.

Spada M: designed the work, analyzed and interpreted data, revisited critically the manuscript for intellectual content, approved the final version, and reviewed the accuracy and integrity of the work.

Colledan M: substantial contribution to the conception of the work, interpretation of data, revisited critically the manuscript for intellectual content, approved the final version, and reviewed the accuracy and integrity of the work.

de Ville de Goyet J: substantial contribution to the conception of the work, acquisition and interpretation of data, revisited critically the manuscript for intellectual content, approved the final version, reviewed the accuracy and integrity of the work.

Salizzoni M: acquisition and interpretation of data, revisited critically the manuscript for intellectual content, approved the final version, reviewed the accuracy and integrity of the work.

De Carlis L: acquisition and interpretation of data, revisited critically the manuscript for intellectual content, approved the final version, reviewed the accuracy and integrity of the work.

Andorno E: acquisition and interpretation of data, revisited critically the manuscript for intellectual content, approved the final version, reviewed the accuracy and integrity of the work.

Gruttadauria S: acquisition and interpretation of data, revisited critically the manuscript for intellectual content, approved the final version, reviewed the accuracy and integrity of the work.

Ettore GM: acquisition and interpretation of data, revisited critically the manuscript for intellectual content, approved the final version, reviewed the accuracy and integrity of the work.

Cescon M: acquisition and interpretation of data, revisited critically the manuscript for intellectual content, approved the final version, reviewed the accuracy and integrity of the work.

Rossi G: acquisition and interpretation of data, revisited critically the manuscript for intellectual content, approved the final version, reviewed the accuracy and integrity of the work.

Risaliti A: acquisition and interpretation of data, revisited critically the manuscript for intellectual content, approved the final version, reviewed the accuracy and integrity of the work.

Tisone G: acquisition and interpretation of data, revisited critically the manuscript for intellectual content, approved the final version, reviewed the accuracy and integrity of the work.

Tedeschi U: acquisition and interpretation of data, revisited critically the manuscript for intellectual content, approved the final version, reviewed the accuracy and integrity of the work.

Vivarelli M: acquisition and interpretation of data, revisited critically the manuscript for intellectual content, approved the final version, reviewed the accuracy and integrity of the work.

Agnes S: acquisition and interpretation of data, revisited critically the manuscript for intellectual content, approved the final version, reviewed the accuracy and integrity of the work.

De Simone P: acquisition and interpretation of data, revisited critically the manuscript for intellectual content, approved the final version, reviewed the accuracy and integrity of the work.

Lupo LG: acquisition and interpretation of data, revisited critically the manuscript for intellectual content, approved the final version, reviewed the accuracy and integrity of the work.

Di Benedetto F: acquisition and interpretation of data, revisited critically the manuscript for intellectual content, approved the final version, reviewed the accuracy and integrity of the work.

Santaniello W: acquisition and interpretation of data, revisited critically the manuscript for intellectual content, approved the final version, reviewed the accuracy and integrity of the work.

Zamboni F: acquisition and interpretation of data, revisited critically the manuscript for intellectual content, approved the final version, reviewed the accuracy and integrity of the work.

Mazzaferro V: acquisition and interpretation of data, revisited critically the manuscript for intellectual content, approved the final version, reviewed the accuracy and integrity of the work.

Rossi M: acquisition and interpretation of data, revisited critically the manuscript for intellectual content, approved the final version, reviewed the accuracy and integrity of the work.

Puoti F: analyzed and interpreted data, revisited critically the manuscript for intellectual content, approved the final version, reviewed the accuracy and integrity of the work.

Camagni S: acquisition and interpretation of data, revisited critically the manuscript for intellectual content, approved the final version, reviewed the accuracy and integrity of the work.

Grimaldi C: acquisition and interpretation of data, revisited critically the manuscript for intellectual content, approved the final version, reviewed the accuracy and integrity of the work.

Gringeri E: acquisition and interpretation of data, revisited critically the manuscript for intellectual content, approved the final version, reviewed the accuracy and integrity of the work.

Rizzato L: acquisition and interpretation of data, revisited critically the manuscript for intellectual content, approved the final version, reviewed the accuracy and integrity of the work.

Nanni Costa A: substantial contribution to the conception of the work, interpretation of data, revisited critically the manuscript for intellectual content, approved the final version, reviewed the accuracy and integrity of the work.

Cillo U: designed the work, interpreted data, revisited critically the manuscript for intellectual content, approved the final version, reviewed the accuracy and integrity of the work.

## DISCLOSURE

The authors of this manuscript have no conflicts of interest to disclose as described by the *American Journal of Transplantation*.

## DATA AVAILABILITY STATEMENT

The data that support the findings of this study are available on request from the corresponding author. The data are not publicly available due to privacy or ethical restrictions.

## ORCID

Roberta Angelico  <https://orcid.org/0000-0002-3439-7750>

## REFERENCES

- Kim WR, Lake JR, Smith JM, et al. Liver. *Am J Transplant.* 2016;16(suppl 2):69-98.
- Hsu EK, Shaffer ML, Gao L, et al. Analysis of liver graft offers to pediatric candidates on the transplant waiting list. *Gastroenterology.* 2017;153(4):988-995.
- Pichlmayr R, Ringe B, Gubernatis G, et al. Transplantation of a donor liver to 2 recipients (splitting transplantation)—a new method in the further development of segmental liver transplantation. *Langenbecks Arch Chir.* 1988;373:127-130.
- Otte JB, de Ville de Goyet J, Alberti D, et al. The concept and technique of the split liver in clinical transplantation. *Surgery.* 1990;107(6):605-612.
- Azoulay D, Astarcioglu I, Bismuth H, et al. Split-liver transplantation. The Paul Brousse policy. *Ann Surg.* 1996;224:737-746.
- Mirza DF, Achilleos O, Pirenne J, et al. Encouraging results of split-liver transplantation. *Br J Surg.* 1998;85:494-497.
- de Ville de Goyet J. Split liver transplantation in Europe—1988 to 1993. *Transplantation.* 1995;59(10):1371-1376.
- Wan P, Li Q, Zhang J, et al. Right lobe split liver transplantation versus whole liver transplantation in adult recipients: a systematic review and meta-analysis. *Liver Transpl.* 2015;21(7):928-943.
- Ross MW, Cescon M, Angelico R, et al. A matched pair analysis of multicenter long-term follow-up after split liver transplantation with extended right grafts. *Liver Transpl.* 2017;23(11):1384-1395.
- Hsu EK, Mazariegos GV. Global lessons in graft type and pediatric liver allocation: a path toward improving outcomes and eliminating wait-list mortality. *Liver Transpl.* 2017;23(1):86-95.
- Adam R, Karam V, Delvart V, et al. Evolution of indications and results of liver transplantation in Europe. A report from the European Liver Transplant Registry (ELTR). *J Hepatol.* 2012;57:675-688.
- Superina R. To split or not to split: that is the question. *Liver Transpl.* 2012;18:389-390.
- Cardillo M, De Fazio N, Pedotti P, et al. Split and whole liver transplantation outcomes: a comparative cohort study. *Liver Transpl.* 2006;12:402-410.
- Cillo U, Burra P, Mazzaferro V, et al. A multistep, consensus-based approach to organ allocation in liver transplantation: toward a “Blended Principle Model”. *Am J Transplant.* 2015;15:2552-2561.
- <http://www.trapianti.salute.gov.it/> Accessed September 13, 2018
- Broelsch CE, Whittington PF, Emond JC, et al. Liver transplantation in children from living related donors surgical techniques and results. *Ann Surg.* 1991;214:428-437.
- Emond JC, Whittington PF, Thistlethwaite JR, et al. Transplantation of two patients with one liver. Analysis of a preliminary experience with “split liver” grafting. *Ann Surg.* 1990;21:14-22.
- Angelico R, Nardi A, Adam R, et al. Outcomes of left split graft transplantation in Europe: report from the European Liver Transplant Registry (ELTR). *Transpl Int.* 2018;31(7):739-750.
- Elsabbagh AM, Williams C, Girlanda R, et al. The impact of intercenter sharing on the outcomes of pediatric split liver transplantation. *Clin Transplant.* 2017;31(12):e13138.
- Gerling T, Karbe T, Kütemeier R, et al. The role of an organ exchange organization in increasing split-liver transplantation. *Clin Transpl.* 2004;7:83-90.
- Maggi U, De Feo TM, Andorno E, et al. Fifteen years and 382 extended right grafts from in situ split livers in a multicenter study: are these still extended criteria liver grafts? *Liver Transpl.* 2015;21:500-511.
- Zambelli M, Andorno E, De Carlis L, et al. Full-right-full-left split liver transplantation: the retrospective analysis of an early multicenter experience including graft sharing. *Am J Transplant.* 2012;12:2198-2210.

23. Giacomoni A, Lauterio A, Donadon M, et al. Should we still offer split-liver transplantation for two adult recipients? A retrospective study of our experience. *Liver Transpl.* 2008;14:999-1006.
24. Cescon M, Spada M, Colledan M, et al. Feasibility and limits of split liver transplantation from pediatric donors: an Italian multicenter experience. *Ann Surg.* 2006;244:805-814.
25. Corno V, Colledan M, Dezza MC, et al. Extended right split liver graft for primary transplantation in children and adults. *Transpl Int.* 2006;19:492-499.
26. Gridelli B, Spada M, Petz W, et al. Split-liver transplantation eliminates the need for living-donor liver transplantation in children with end-stage cholestatic liver disease. *Transplantation.* 2003;75:1197-1203.
27. Spada M, Gridelli B, Colledan M, et al. Extensive use of split liver for pediatric liver transplantation: a single-center experience. *Liver Transpl.* 2000;6:415-428.
28. Andrassy J, Wolf S, Lauseker M, et al. Higher retransplantation rate following extended right split-liver transplantation: an analysis from the Eurotransplant Liver Follow-up Registry. *Liver Transpl.* 2018;24(1):26-34.
29. Mitchell E, Loomes KM, Squires RH, Goldberg D. Variability in acceptance of organ offers by pediatric transplant centers and its impact on wait-list mortality. *Liver Transpl.* 2018;24(6):803-809.
30. Herden U, Fischer L, Sterneck M, et al. Long-term follow-up after full-split liver transplantation and its applicability in the recent transplant era. *Clin Transplant.* 2018;32(3):e13205.
31. Organ Donation and Transplantation. <https://nhsbtdbe.blob.core.windows.net/umbraco-assets-corp/11686/pol196-liver-allocation.pdf>. Accessed September 13, 2018.
32. Loirat C, Chalem Y, Golmard JL. Organ allocation in pediatric transplantation in France. *Pediatr Nephrol.* 2001;16(12):964-970.
33. Perito ER, Roll G, Dodge JL, et al. Split liver transplantation and pediatric waitlist mortality in the United States: potential for improvement [published online ahead of print 2018]. *Transplantation.* <https://doi.org/10.1097/tp.0000000000002249>.
34. Herden U, Ganschow R, Briem-Richter A, et al. Liver transplantation in children using organs from young paediatric donors. *Transpl Int.* 2011;24(6):610-618.
35. Battula NR, Plato M, Anbarasan R, et al. Intention to split policy: a successful strategy in a combined pediatric and adult liver transplant center. *Ann Surg.* 2017;265(5):1009-1015.
36. Gawad KA, Topp S, Gundlach M, et al. Sharing of split livers between centers is easily feasible. *Transplant Proc.* 2000;32:59.
37. Lee TC, Barshes NR, Washburn WK, et al. Split-liver transplantation using the left lateral segment: a collaborative sharing experience between two distant centers. *Am J Transplant.* 2005;5(7):1646-1651.
38. de Ville de Goyet J, di Francesco F, Sottani V, et al. Splitting livers: trans-hilar or trans-umbilical division? Technical aspects and comparative outcomes *Pediatr Transplant.* 2015;19(5):517-526.
39. Rodriguez-Davalos MI, Arvelakis A, Umman V, et al. Segmental grafts in adult and pediatric liver transplantation: improving outcomes by minimizing vascular complications. *JAMA Surg.* 2014;149(1):63-70.
40. Noujaim HM, Gunson B, Mayer DA, et al. Worth continuing doing ex situ liver graft splitting? A single-center analysis *Am J Transplant.* 2003;3(3):318-323.
41. Noujaim HM, Gunson B, Mirza DF, et al. Ex situ preparation of left split-liver grafts with left vascular pedicle only: is it safe? A comparative single-center study *Transplantation.* 2002;74(10):1386-1390.
42. Angelico R, Trapani S, Colledan M, et al. Higher retransplantation rate following extended right split-liver transplantation - an analysis from the Eurotransplant Liver Follow-up Registry. *Liver Transpl.* 2018;24(6):849-850.
43. Leea KW, Cameron AM, Maleya WR, et al. Factors affecting graft survival after adult/child split-liver transplantation: analysis of the UNOS/OPTN data base. *Am J Transplant.* 2008;8:1186-1196.
44. Gonzalez HD, Liu ZW, Cashman S, Fusai GK. Small for size syndrome following living donor and split liver transplantation. *World J Gastrointest Surg.* 2010;2(12):389-394.
45. Kim WR, Lake JR, Smith JM, et al. OPTN/SRTR 2015 annual data report: liver. *Am J Transplant.* 2017;17(suppl 1):174-251.
46. Gavriilidis P, Roberts KJ, Azoulay D. Right lobe split liver graft versus whole liver transplantation: a systematic review by updated traditional and cumulative meta-analysis. *Dig Liver Dis.* 2018;50(12):1274-1282.

## SUPPORTING INFORMATION

Additional supporting information may be found online in the Supporting Information section at the end of the article.

**How to cite this article:** Angelico R, Trapani S, Spada M, et al. A national mandatory-split liver policy: A report from the Italian experience. *Am J Transplant.* 2019;19:2029-2043. <https://doi.org/10.1111/ajt.15300>