



Pseudotachylyte as field evidence for lower-crustal earthquakes during the intracontinental Petermann Orogeny (Musgrave Block, Central Australia)

Friedrich Hawemann¹, Neil S. Mancktelow¹, Sebastian Wex¹, Alfredo Camacho², and Giorgio Pennacchioni³

¹Department of Earth Sciences, ETH Zurich, Sonneggstrasse 5, 8092 Zürich, Switzerland

²Department of Geological Sciences, University of Manitoba, 125 Dysart Rd, Winnipeg, Manitoba, R3T 2N2, Canada

³Department of Geosciences, University of Padova, Via Gradenigo 6, 35131 Padova, Italy

Correspondence: Friedrich Hawemann (friedrich.hawemann@erdw.ethz.ch)

Received: 30 October 2017 – Discussion started: 8 November 2017

Revised: 21 March 2018 – Accepted: 3 April 2018 – Published: 9 May 2018

Abstract. Geophysical evidence for lower continental crustal earthquakes in almost all collisional orogens is in conflict with the widely accepted notion that rocks, under high grade conditions, should flow rather than fracture. Pseudotachylytes are remnants of frictional melts generated during seismic slip and can therefore be used as an indicator of former seismogenic fault zones. The Fregon Subdomain in Central Australia was deformed under dry sub-eclogitic conditions of 600–700 °C and 1.0–1.2 GPa during the intracontinental Petermann Orogeny (ca. 550 Ma) and contains abundant pseudotachylyte. These pseudotachylytes are commonly foliated, recrystallized, and cross-cut by other pseudotachylytes, reflecting repeated generation during ongoing ductile deformation. This interplay is interpreted as evidence for repeated seismic brittle failure and post- to inter-seismic creep under dry lower-crustal conditions. Thermodynamic modelling of the pseudotachylyte bulk composition gives the same PT conditions of shearing as in surrounding mylonites. We conclude that pseudotachylytes in the Fregon Subdomain are a direct analogue of current seismicity in dry lower continental crust.

tained at high strain rates and high temperatures extrapolated to natural conditions (e.g. Kohlstedt et al., 1995). The simplest assumption of competing brittle and viscous behaviour at constant strain rate results in a typical “Christmas tree” 1-D representation of strength variation with depth (Goetze and Evans, 1979). One basic form of the strength profile for the continental lithosphere is the so-called “jelly sandwich” model, with a quartz- and feldspar-rich wet, weak, and viscously flowing lower crust sandwiched between a strong, brittle upper crust and a dry, strong, brittle upper mantle with olivine rheology (e.g. Burov and Watts, 2006; Jackson, 2002a). An alternative “crème brûlée” model considers a wet olivine rheology for the upper mantle, and therefore limits all significant strength and seismicity to the upper crust (Burov and Watts, 2006; Jackson, 2002a). However, in contradiction to such models that limit brittle deformation exclusively to the upper crust, seismicity is also recorded in the lower crust in almost all collisional settings, e.g. the Alps (Deichmann and Rybach, 1989; Singer et al., 2014), the Himalayas (Jackson, 2002b; Jackson et al., 2004), the Tien Shan (Xu et al., 2005), the Central Indian Shield (Rao et al., 2002), and the North Island of New Zealand (Reyners et al., 2007).

The main factors governing rock rheology are temperature, strain rate, chemical composition, water activity, and pore fluid pressure. These parameters cannot be well constrained from seismic measurements. Consequently, direct observations from field studies of exposed lower-crustal sections are critical for understanding lower-crustal rheology. Pseudotachylytes, generally interpreted to represent frictional melt generated during seismic failure (McKenzie and

1 Introduction

Predicting the rheology of the Earth’s crust is crucial for all geodynamic models over the whole range of length and timescales from plate tectonics to seismic hazard estimation. In general, the main constraints on rock rheology are derived from rock deformation experiments, with results ob-

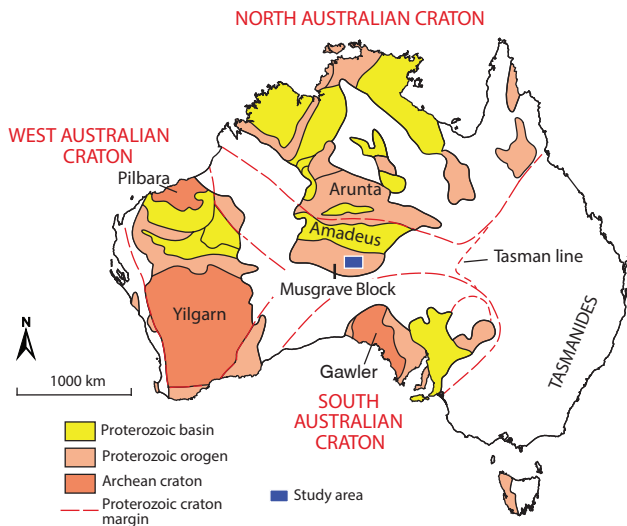


Figure 1. Position of the Musgrave Block between the Archean cratons of Australia. Modified after Evins et al. (2010).

Brune, 1972; Sibson, 1975), can be locally abundant in exposures of lower crust (Altenberger et al., 2011, 2013; Austrheim and Boundy, 1994; Clarke and Norman, 1993; Moecher and Steltenpohl, 2009, 2011; Pittarello et al., 2012; Orlandini et al., 2013; Menegon et al., 2017). The metamorphic conditions of these sections correspond to depths well below the usual brittle–ductile transition zone for crustal rocks (< 15 km) and thus the assumed lower limit for earthquake nucleation. Sibson (1980) reported mutually overprinting pseudotachylytes and mylonites from the Outer Hebrides Thrust (NW Scotland) and similar observations were made by Moecher and Steltenpohl (2009) and Menegon et al. (2017) in the Lofoten region (N Norway), by Hobbs et al. (1986) in the Redbank Shear Zone (Arunta Block, Central Australia), and by Camacho et al. (1995) in the Woodroffe Thrust (Central Australia). Mutual overprinting has been interpreted to reflect the generation of pseudotachylytes and mylonitization under the same conditions (Altenberger et al., 2011, 2013; Clarke and Norman, 1993; Moecher and Steltenpohl, 2011; Pennacchioni and Cesare, 1997; Pittarello et al., 2012; Ueda et al., 2008; White, 1996, 2004, 2012). A possible explanation for the generation of earthquakes in these mid- to lower-crustal rocks is the downward migration of the brittle–ductile transition through the transfer of stress from the upper crust after a seismic event (Ellis and Stöckhert, 2004; Handy and Brun, 2004). Another mechanism for the embrittlement of the lower crust is high pore fluid pressures, and many field examples of pseudotachylytes and brittle fracturing in the lower crust have been closely linked to fluid activity (Altenberger et al., 2011; Austrheim et al., 1996; Lund and Austrheim, 2003; Maddock et al., 1987; Steltenpohl et al., 2006; White, 2012). In contrast, Clarke and Norman (1993) considered that the preser-

vation of finely grained pseudotachylyte under high-grade conditions is only possible if the pseudotachylyte composition is dry.

The aim of the current study is to establish the conditions under which pseudotachylytes can form in a water-deficient lower crust and to demonstrate that the recurring interplay of fracture and flow represents the bulk deformation style of lower crust in intracontinental settings as preserved in the Musgrave Block. The field, petrological, and microstructural results provide direct observational constraints on proposed models for lower-crustal seismicity.

2 Geological setting

The Musgrave Block in Central Australia (Fig. 1) provides excellent exposure of well-preserved lower-crustal fault rocks that can be studied over hundreds of kilometres (Fig. 2a and b). In this study, we focus on the Fregon Subdomain in the eastern Musgrave Block, which represents the hanging wall of the Woodroffe Thrust (Camacho et al., 1997; Camacho and McDougall, 2000; Wex et al., 2017).

The Fregon Subdomain experienced granulite facies metamorphism during the Musgravian Orogeny, associated with the amalgamation of the Australian cratons at about 1.2 Ga (Gray, 1978; Wade et al., 2006). The voluminous Pitjantjatjara Supersuite, consisting mainly of granites and charnockites, was emplaced during the post-collisional stage (Smithies et al., 2011). Extension at ~ 1070 Ma is manifested by the intrusion of dolerite dykes (Alcurra Suite), gabbros, and granites (Giles Event; Evins et al., 2010). This rift event does not seem to be associated with a deformation phase in the eastern Musgrave Block, and was probably purely magmatic (Aitken et al., 2013). Another series of dolerite dykes, the Amata Suite at ca. 800 Ma, is potentially related to a mantle plume (Zhao et al., 1994). The Fregon Subdomain preserves a series of mostly strike-slip crustal-scale shear zones developed during the Petermann Orogeny (~ 550 Ma; Camacho et al., 1997), all of which are associated with abundant pseudotachylytes. During the Petermann Orogeny, the Fregon Subdomain was juxtaposed against former mid-crustal rocks in the north (Mulga Park Subdomain) along the moderately to shallowly south-dipping Woodroffe Thrust (Fig. 2; Camacho et al., 1995; Major and Connor, 1993; Wex et al., 2017). The intracontinental Petermann Orogeny correlates in time with the global Pan-African Orogeny (Camacho et al., 1997) and was possibly caused by a clockwise rotation of the South and West Australian cratons with respect to the North Australian Craton (Li and Evans, 2011). The protoliths of the Fregon and Mulga Park Subdomains are very similar in composition and age (Camacho and Fanning, 1995; Edgoose et al., 1999), but can be readily distinguished using airborne thorium (Th) concentrations as seen in Fig. 2c. The low Th concentration in the hanging wall probably relates to the formation and migration of partial melts to shallower crustal

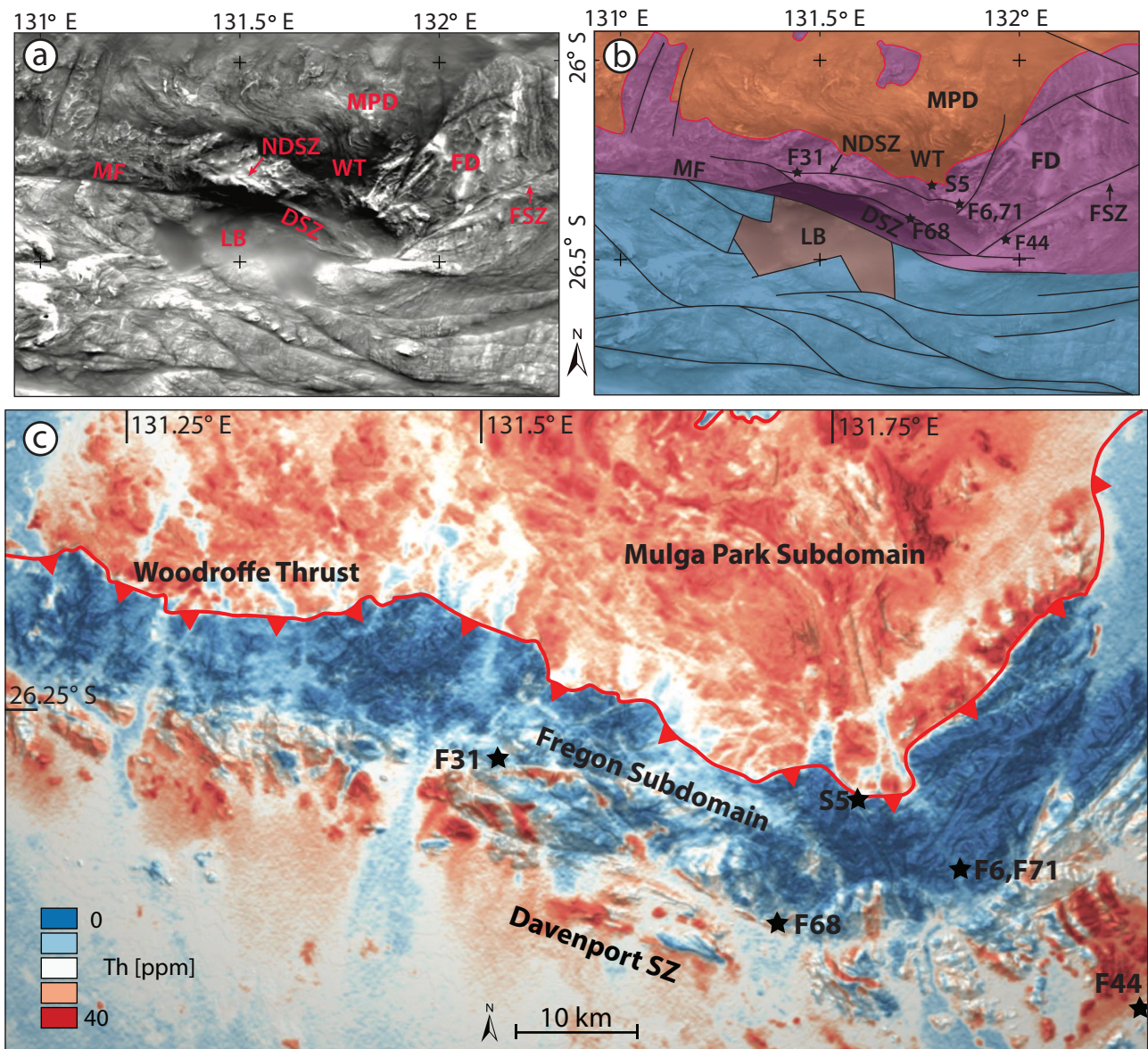


Figure 2. (a) Total magnetic intensity map (Milligan and Nakamura, 2015) and interpreted structures. Most fault zones appear as dark lines with a marked contrast; lithological layering is visible in the Mulga Park Subdomain (MPD), whereas the sediments of the Levensger Basin (LB) appear blurred. (b) Interpretation of the tectonic framework of the Central Musgrave Block. The Mann Fault (MF) separates units that did not experience high-grade overprint during the Petermann Orogeny in the south (blue), from the Fregon Subdomain (FD, purple) in the north. The Davenport Shear Zone (DSZ), North Davenport Shear Zone (NDSZ), and the Woodroffe Thrust (WT) were mapped by integrating the magnetic intensity map with airborne imagery and direct field observations. (c) Compilation of airborne gamma ray surveys, with the concentration of thorium shown from blue (low) to red (high). Flares of low concentration in the footwall are associated with sediments transported from the hanging wall by rivers. Pseudotachylyte sample locations discussed in the text are indicated as black stars. Dataset SA_RAD_TH, Geological Survey of South Australia (2011); grey levels from hill shade. For a simplified geological map covering the same area, and an interpreted synthetic NS cross section, see Wex et al. (2017).

levels during the earlier granulite facies metamorphism, with the breakdown of apatite and monazite resulting in partitioning of incompatible elements, such as Th, into the melt phase (Förster and Harlov, 1999). Consequently, low Th concentrations can be used to indicate that the crust experienced

granulite facies metamorphism (Lambert and Heier, 1968; Scharbert et al., 1976). The signal is partly obliterated by the granitic intrusions of the Pitjantjatjara Supersuite and Giles Event, which succeeded granulite facies metamorphism.

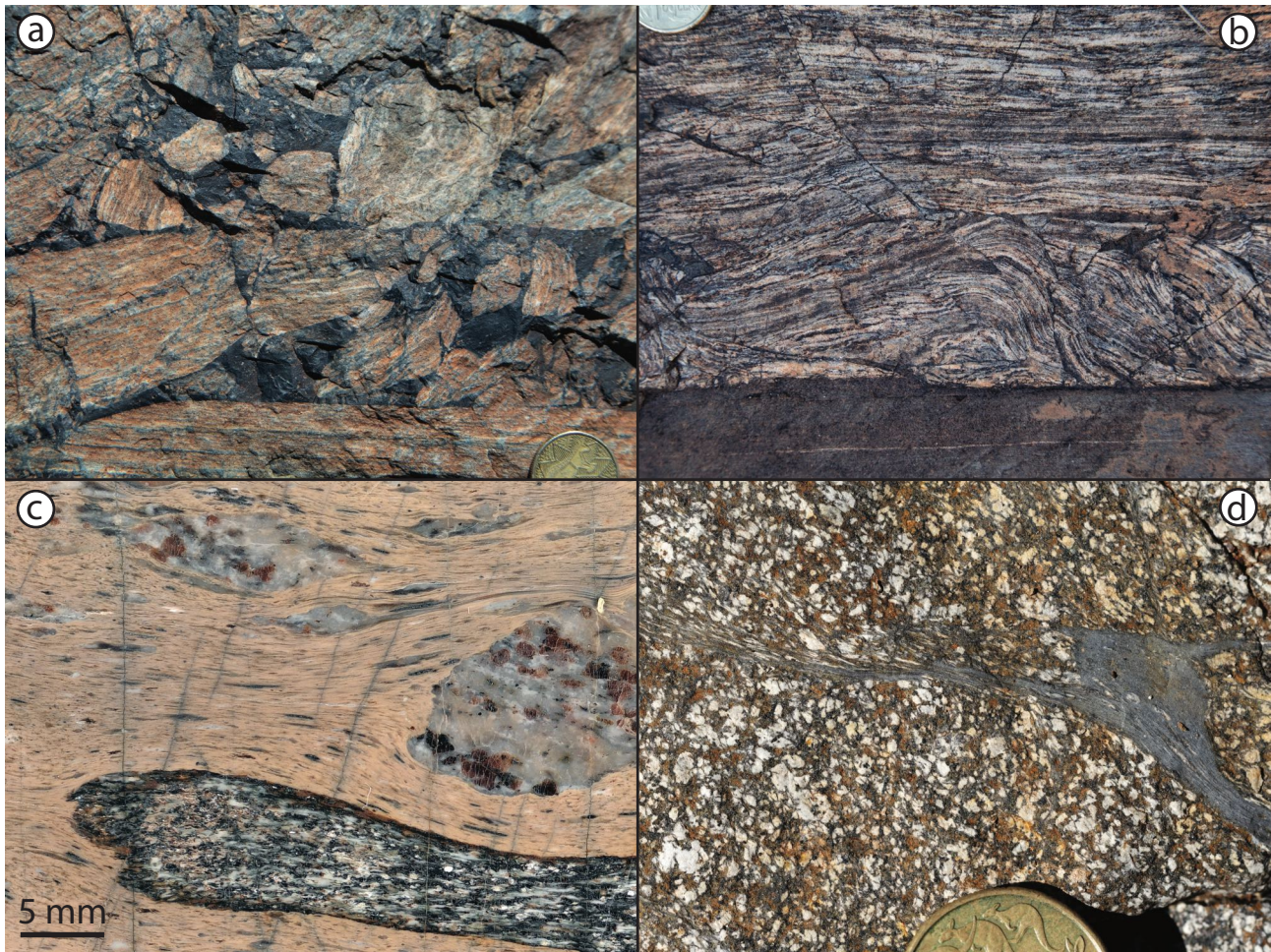


Figure 3. Field examples of pseudotachyrites: (a) pseudotachylyte breccia disrupting mylonitic foliation. Note the relative rotation of clasts, their generally angular shape and the wide range of clast sizes. (26.3877 S, 131.7091 E). (b) Late-stage pseudotachylyte localizing at the boundary of a sheared dolerite dyke (bottom part of the image), creating a duplex-like structure with all planes of movement decorated by pseudotachylyte (N is up, 26.3408 S, 131.5255 E). (c) Polished slab with caramel-coloured pseudotachylyte including fragments of quartzofeldspathic gneiss and mafic granulite. Note the internal foliation and elongation of clasts. Note also that although the clasts are variably foliated, they are not ultramylonitic and have irregular shapes and a very wide range of sizes, typical of a cataclastic breccia (26.3853 S, 131.7105 E). (d) Sheared pseudotachylyte in an otherwise almost undeformed gabbro (N is up, 26.3528 S, 131.8419 E).

3 Field observations

The Davenport Shear Zone (DSZ) is a strike-slip shear zone trending WNW–ESE with a sub-horizontal stretching lineation, a moderately to steeply dipping foliation (Camacho et al., 1997), and a sense of shear that changes from dominantly sinistral to dextral from west to east, reflecting the regional variation in the foliation trend. In the framework of the Musgrave Block, the DSZ is bounded to the south by the generally poorly exposed Mann Fault (Fig. 2a). While dextral strike-slip movement along the Mann Fault is indicated by the pull-apart Levenger Basin (Aitken and Betts, 2009; Camacho and McDougall, 2000), a normal, north-side-up component is implied by the lack of any known high-pressure Petermann Orogeny overprint south of the Mann Fault, as

inferred from the mapping work of Glikson et al. (1996), the age data of Camacho and McDougall (2000), and our own observations. To the north, deformation in the DSZ is strongly partitioned and bounded by a high-strain zone. The only continuous zone of mylonites north of the DSZ towards the Woodroffe Thrust is the coeval North Davenport Shear Zone (NDSZ) (Camacho et al., 1997). This mylonitic zone developed under similar conditions to the DSZ, but the pitch of the lineation is widely variable, from horizontal to down dip to the south, with the shear sense being dominantly dextral-oblique thrusting towards the NW. The DSZ mylonites and the NDSZ converge to the west. Towards the east, the relationships are less clear because of the lack of outcrop. The ENE-trending, moderately dipping Ferdi-

nand Fault is a sinistral strike-slip shear zone that appears to branch from the steep Mann Fault.

The DSZ is an approximately 5 km wide mylonitic zone with the foliation trend clearly visible on satellite images. This foliation encompasses low-strain domains, from a kilometre to metre scale, which potentially preserve initial stages of the temporal development of deformation. Pseudotachylytes are abundant, not only in the DSZ but also throughout the whole Fregon Subdomain. They are concentrated along, but not exclusively limited to, the different shear zones described above and especially along the Woodroffe Thrust (Camacho et al., 1995). Pseudotachylytes are easily identified in the field by their aphanitic matrix, abundance of clasts, injection veins, breccias, and chilled margins (Fig. 3). When overprinted by subsequent ductile shearing, identification becomes more difficult and cannot always be confirmed (Kirkpatrick and Rowe, 2013; Price et al., 2012). The thickness of pseudotachylyte veins reaches up to 7 cm but is usually about 1 cm. Generation surfaces, when observed, show very little former melt, as it was mostly injected into the host rock. There is no evidence for hydration, such as formation of bleached halos or hydrous mineral growth. Assemblages with significant amounts of water-bearing minerals (e.g. biotite and hornblende) are restricted to late- to post-Musgravian granitic intrusions. Pseudotachylytes do not show any specific affinity for these more hydrous units, but in fact occur in all lithologies. In all the different mylonitic shear zones of the Fregon Subdomain, the observed relative age relationship between pseudotachylyte formation and ductile shearing in the adjacent rock covers the following range of possibilities.

1. Pseudotachylyte post-dates shearing. The mylonitic foliation in the host rock is in general cross-cut and brecciated by the pseudotachylyte (Fig. 3a), although the pseudotachylyte may also be emplaced parallel to the foliation, in some cases at the boundary to ultramylonite bands or along the rim of dolerite dykes (Fig. 3b). Pseudotachylytes occur as veins or as breccias with a black aphanitic matrix, in which fragments of the host rock show a rotated internal fabric.
2. Pseudotachylyte is broadly synchronous with shearing. Pseudotachylyte veins cross-cut the mylonitic foliation and are themselves foliated, as visible from elongated clasts (Fig. 3c). The stretching lineation in the pseudotachylyte is parallel to that in the surrounding mylonites. Veins and breccias can show a wide range of matrix colours, from grey to beige to caramel.
3. The pseudotachylyte itself is foliated but occurs in effectively un-sheared rocks, with ductile deformation confined to the pseudotachylyte vein, while the adjacent rock remained little deformed (Figs. 3d and 4).

4 Microstructure

4.1 Post-shearing pseudotachylyte

Late-stage pseudotachylytes cross-cut the mylonitic fabric, and show the pristine characteristic microstructures of quenched melts, preserving an extremely finely grained matrix (grain size on the order of a few microns) with flow structures, chilled margins, and angular, sometimes corroded clasts of iron oxides (Fig. 5a). In some instances, microlites of feldspar and pyroxene are observed. Since these microlites are the result of crystallization during melt undercooling, their mineral assemblages and mineral chemistry do not represent ambient temperature conditions. Al-rich pyroxenes have been described from pseudotachylytes in the Musgrave Ranges some 250 km west of the current study area by Wenk and Weiss (1982). Pressures obtained from the geobarometers applied were about 3 GPa, which the authors interpreted to represent dynamic syn-pseudotachylyte melting pressures, rather than ambient lithostatic conditions.

4.2 Syn-shearing pseudotachylyte

On occasion, sheared pseudotachylytes contain clasts of an older generation of pseudotachylyte, suggesting recurring brittle and ductile deformation. The syn-kinematic mineral assemblage of pseudotachylytes does not show any evidence for fluid infiltration.

Sample F31, located in the NDSZ (26.2793 S, 131.4968 E), is from the immediate boundary between a garnet-bearing quartzo-feldspathic gneiss and a dolerite dyke. This contact is exploited by a pseudotachylyte (Fig. 6), which mostly incorporates the dolerite but also includes clasts of the felsic gneiss. In addition to inclusions of country rock, there are also clasts of an older generation of pseudotachylyte, strongly overprinted by ductile shear, within the breccia. Locally, the boundary of these first-generation pseudotachylyte clasts is marked by a second, also sheared, generation of pseudotachylyte of greyish colour that cross-cuts the older generation but is itself cut by the younger un-sheared third generation (Fig. 6). These relationships demonstrate that (1) initial pseudotachylyte formation, interpreted to represent a brittle seismic event, was followed by (2) ductile shearing, followed by (3) a second seismic event, developing the grey second-generation pseudotachylyte, which was then (4) again sheared, to be finally followed by (5) a third generation of un-sheared pseudotachylyte and associated breccia.

Sample F68 is a garnet-bearing quartzo-feldspathic gneiss, sampled close to the northern boundary of the DSZ (same outcrop as the example in Fig. 3c; 26.3849 S, 131.7067 E). Pseudotachylyte veins are ca. 1 mm thick, spaced ca. 1 cm apart, and oriented parallel to the proto-mylonitic foliation. Pseudotachylyte veins show injections and have a finely grained matrix of Grt + Kfs + Pl + Qz + Bt + Ky + Rt, sim-

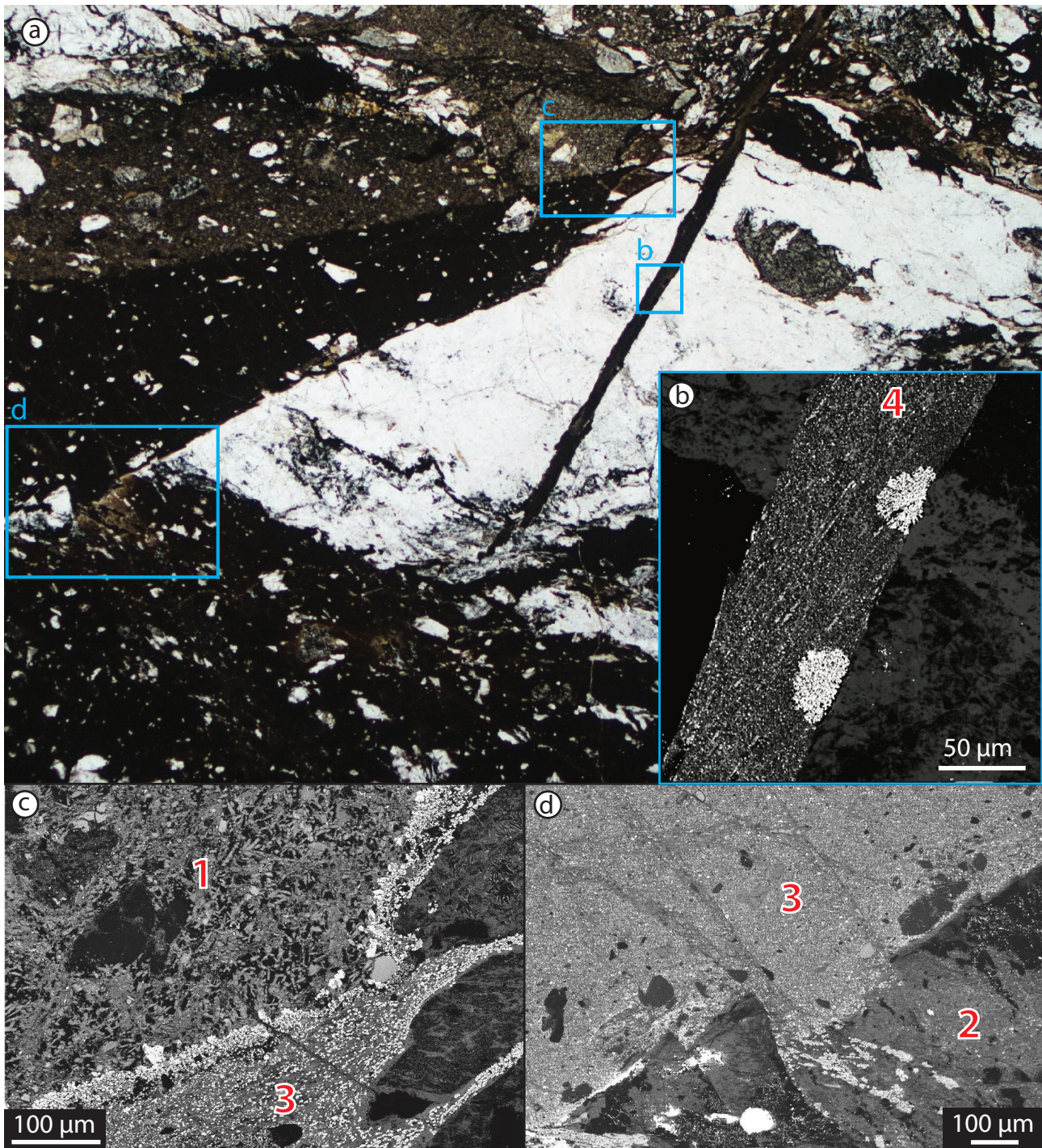


Figure 4. (a) Thin section image of sample F44 (26.4514 S, 131.9553 E) showing four generations of pseudotachylyte, from the oldest (1) to the youngest (4) (plane polarized light; to reduce contrast, images taken with different exposure times were combined). (b) Backscattered electron image of the area indicated by the blue box in (a): a vein of generation 4 shows a planar foliation, defined by elongate clasts, that is oblique to the vein boundary and is overgrown by dendritic (or “cauliflower”) garnet. (c) Pseudotachylyte generations 1 and 3 showing a former chilled margin now decorated by garnet. (d) Pseudotachylyte generation 3 cross-cutting generation 2, with the boundary offset by late fractures.



Figure 5. Backscattered electron images of pseudotachylyte: (a) late-stage pseudotachylyte with angular clasts in mylonitic host rock with abundant fractures (26.3550 S, 131.8432 E). (b) Dynamically recrystallized pseudotachylyte in sample F68. Minerals in greyscale from dark to bright are Qz, Pl, Kfs, Ky, Bt, and Grt. The red box indicates the mapped area for Fig. 7. (c) Un-sheared pseudotachylyte in a vein cutting through a plagioclase grain of the granulitic host rock showing dendritic overgrowth of garnet. In the left part of the image, the pseudotachylyte is finely grained and foliated (sample S5). (d) Injection vein preserves original flow banding, visible through the selective overgrowth of garnet (sample S5).

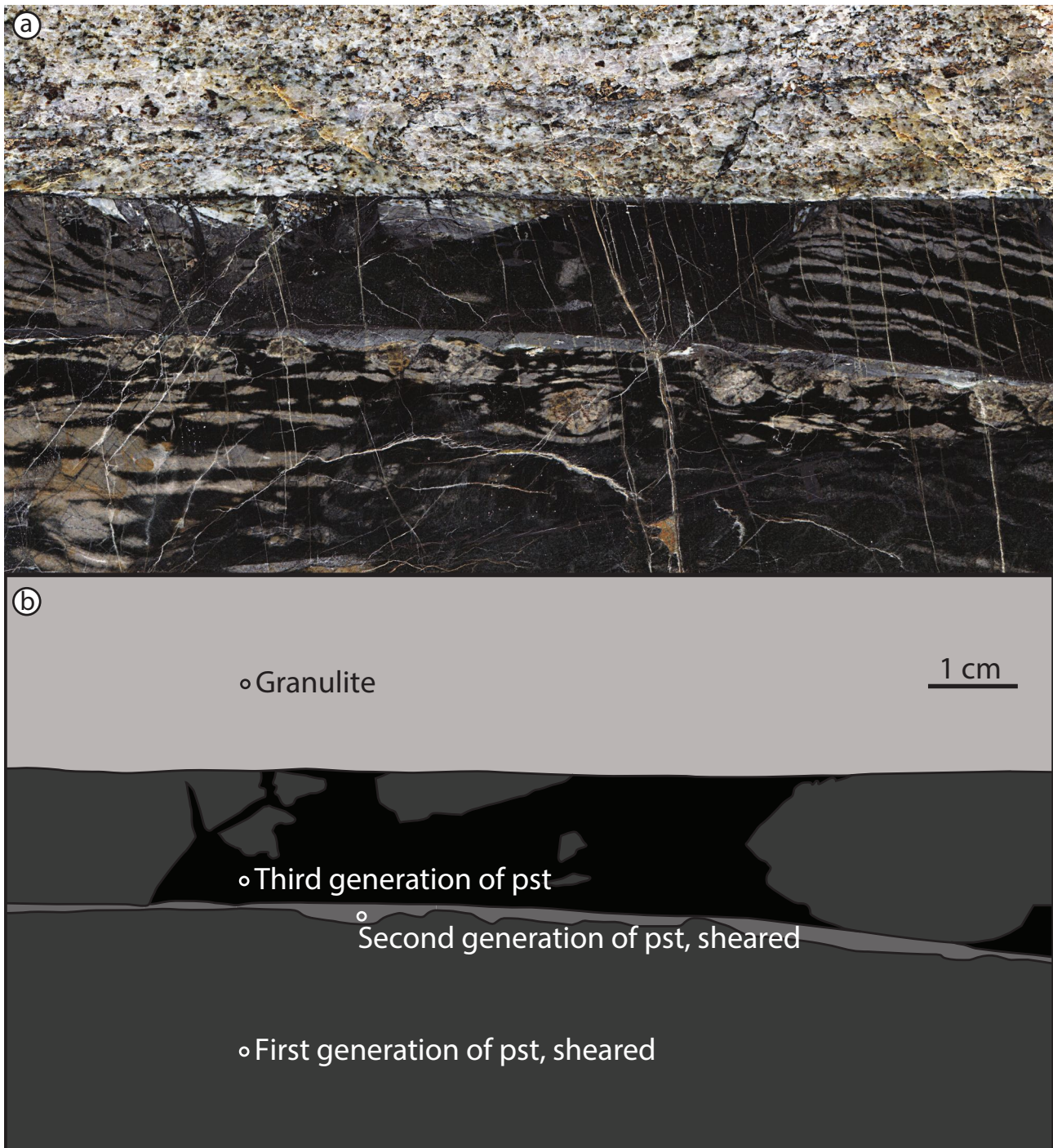


Figure 6. (a) Scan of a polished rock slab (sample F31; 26.2793 S, 131.4968 E), and (b) sketch of the same area. The sample shows three generations of pseudotachylyte, developed at the boundary between garnet-bearing quartzo-feldspathic gneiss (to the top) and a dolerite dyke (below and outside the image). The first generation of pseudotachylyte contains clasts of the quartzo-feldspathic host (upper part of the image), which are intensively sheared. This generation is cross-cut by a second generation of pseudotachylyte, which is present as a light grey vein, with much smaller clasts, which are also elongated. The third generation of pseudotachylyte exhibits a sharp boundary to the host rock in the upper part of the image and incorporates clasts of the first generation pseudotachylyte.

ilar to the host rock assemblage, where Ky is restricted to Pl clasts (mineral abbreviations are after Whitney and Evans, 2010). The pseudotachylyte is slightly enriched in Bt relative to the host rock, but no other OH-bearing phases are present. Kyanite was identified by using Raman spectroscopy and electron backscatter diffraction (EBSD). The finely grained poikilitic garnet ($\sim 20\ \mu\text{m}$, Fig. 5b) results in the caramel colour in the field (Fig. 3c). The internal foliation is defined by biotite and aggregates of garnet (Fig. 5b). In the host rock, millimetre-sized relict, granulite facies garnets are fractured and surrounded by smaller, neocrystallized garnet, with sizes on the order of tens of microns.

A sheared pseudotachylyte was sampled in the immediate hanging wall of the Woodroffe Thrust (sample S5, 26.3082 S, 131.7745 E), at the boundary between a sheared dolerite dyke and undeformed felsic granulite. This pseudotachylyte has a paragenesis similar to the dolerite dyke (Pl + Cpx + Gt + Ky + Rt + Ilm + Qz + Kfs), but is much more finely grained. The boundary with the dolerite is decorated by even more-finely grained garnet, possibly the remnant of a chilled margin with a slightly different composition. Where the pseudotachylyte injected into the granulite, it evaded shearing and shows a finely grained matrix with dendritic garnet overgrowth (Fig. 5c), possibly directly crystallizing from the melt. The original flow banding is highlighted by the preferential overgrowth of garnet on some bands, probably due to compositional differences (Fig. 5d).

4.3 Sheared pseudotachylyte in undeformed host rock

Sample F44 from the Ferdinand Shear Zone (26.3856 S, 131.9550 E) contains at least four generations of pseudotachylyte veins and breccias developed in a granitic host rock (Fig. 4a–d). Individual pseudotachylyte veins vary in the amount and rounding of clasts, compositional heterogeneity, and the mineral assemblage. The modal abundance of Grt + Cpx + Opx + Amp + Fsp is also variable, possibly reflecting a progressive change in bulk chemistry of the melt. The observed mineral assemblages in this un-sheared pseudotachylyte might either be the result of crystallisation directly from the melt, or later static overgrowth. Generation 4 clearly cross-cuts older generations and shows an internal foliation, which is interpreted to be the result of a ductile overprint rather than flow banding, as it is nearly planar with a consistent oblique angle to the margin of the pseudotachylyte. The margin of this pseudotachylyte is decorated with dendritic garnet that clearly overgrows the planar foliation (Fig. 4b), indicating post-shearing high-grade conditions rather than crystallization from the melt.

Sample F6 is a gabbro assigned to the Giles Complex (Fig. 3d; 26.3528 S, 131.8419 E), which largely preserves its magmatic texture, but contains sheared pseudotachylyte. The host rock is almost undeformed and shows static reactions such as Grt coronas around Pl in contact with Cpx and breakdown of Opx and Pl to Cpx. The pseudotachylyte contains

a large number of clasts (ca. 50 % of the total volume), dominantly of Pl, which show limited recrystallization. The matrix minerals of the dynamically recrystallized pseudotachylyte consists of Grt + Cpx + Kfs + Qz + Mag + Rt + Ilm + Ky.

5 Conditions of pseudotachylyte emplacement

5.1 Methods

Backscattered electron (BSE) images were taken with an FEI Quanta 200F scanning electron microscope, equipped with a field emission gun deployed at the ScopeM (Scientific Center for Optical and Electron Microscopy, ETH Zurich). Quantitative measurements of mineral composition were acquired with a JEOL JXA-8200 electron probe microanalyser (EPMA) at the Institute for Geochemistry and Petrology, ETH Zurich, with a set of natural standards. Voltage was reduced from 15 to 10 kV for some samples to account for the fine grain size. Thermodynamic modelling using *Perple_X* (Connolly, 1990) was carried out on three samples of recrystallized pseudotachylytes within different host rocks. The determination of a bulk composition for pseudotachylytes by using the classic XRF (X-ray fluorescence) method is hampered by their geometry and the presence of abundant clasts (Di Toro and Pennacchioni, 2004). To minimize these problems, the MATLAB toolbox XMapTools (Lanari et al., 2014) was used to calculate the bulk composition from WDS (wavelength dispersive spectrometer) maps collected with the EPMA. Quantitative point analysis was used to standardize the maps (Lanari et al., 2014). Here, the weight per cent (wt%) of a point analysis is linked to counts for each element of the same point on the map. This can be performed for each mineral phase separately to account for matrix effects. After correlating the counts to wt% of all pixels, the bulk composition of the pseudotachylyte for the desired area of the map was extracted and used as input for *Perple_X*. For all samples, a standardization for each separate mineral was impossible because of the fine grain size. Instead, all count values on the map were correlated to a mean wt% value from point analysis. The resulting deviation in mineral chemistry is generally low and was corrected manually by comparing exported compositions from the standardized maps with measured analyses. The bias on the bulk composition induced by the choice of area can be tested by using a Monte Carlo approach (integrated in XMapTools). The deviations in wt% are on the order of 0.4 for silica and much lower for the other elements. The thermodynamic dataset of Holland and Powell (1998) was used to calculate pseudosections for the composition of the samples and a range of PT conditions to compare with the observed assemblage in dynamically recrystallized pseudotachylyte. The solution models used can be found in the appendix (Tables B1–3).

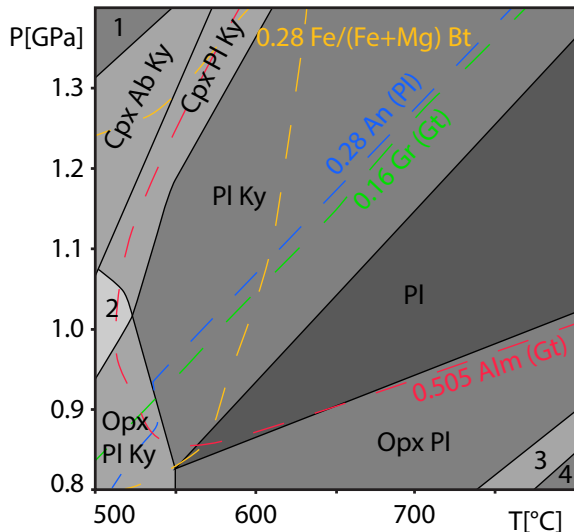


Figure 7. Pseudosection calculated for F68. Additional phases in all fields: Kfs + Grt + Bt + Qz + Rt. With isopleths for Fe/(Fe + Mg) in biotite, the anorthite component of plagioclase (An (Pl)), and the grossular and almandine component of garnet (Gr, Alm (Gt)). Numbered fields: 1: Cpx, Ky; 2: Opx, Cpx, Pl, Ky; 3: Opx, Pl, Ilm; 4: Opx, Pl, Ilm, no Rt.

5.2 Results

5.2.1 Syn-shearing pseudotachylyte

The pseudotachylyte veins in sample F68 have a homogeneous phase distribution with a relatively large grain size ($\sim 20\ \mu\text{m}$), and are almost devoid of clasts (Fig. 5b). The compositional (WDS) map, which was used for calculation of a pseudosection (Fig. 7), has a size of $400\ \text{pixel} \times 400\ \text{pixel}$ and measurements were made using a step size of $2\ \mu\text{m}$, resulting in an area of $0.64\ \text{mm}^2$. The amount of water in the rock could not be measured directly, and was calculated using an assumption of 3 wt% water in biotite and its modal abundance since biotite is the only OH-bearing mineral. As biotite is a platy mineral, its area in the section parallel to the lineation and perpendicular to the foliation might be under-represented. However, an arbitrary 3-fold increase in bulk water content in the calculations (from 0.05 to 0.15 wt%) does not have a noticeable effect on the stability fields of the mineral phases. The stability field for the assemblage of the recrystallized pseudotachylyte in sample F68 is wide, which is why pressure–temperature (PT) conditions were further delimited with mineral isopleths (Fig. 7). The conditions estimated are around 1.05 GPa and $600\ ^\circ\text{C}$. The stoichiometry for each mineral can be reliably reproduced (Table B1).

In sample S5, the pseudotachylyte shows strong compositional heterogeneity parallel to the foliation, probably due to differences associated with original flow banding. This is

best visible in the Ca-compositional map of Fig. 8a, where areas 1 and 2 show lower Ca content in Pl with respect to the other areas. Areas 1, 2 and 3 have a similar paragenesis of Grt + Cpx + Pl + Kfs + Rt, with Qz limited to area 2, while area 3 also lacks Kfs. Areas 4 and 5 consist of Grt + Cpx + Pl + Bt + Opx + Rt. A bulk composition was calculated individually for each area. Clasts of Ca-rich Pl are present (see upper right corner of 7a for an example), with Ky needles growing inside the clasts but not in the matrix assemblage. These Pl clasts were masked out for the calculation of the local bulk composition since they are not part of the stable assemblage. Calculated pseudosections for each area were superimposed onto each other to narrow down the PT estimates of coeval formation (Fig. 8b). Area 4 was not considered since modelling predicted sapphirine to be stable, which was not observed in the sample. Otherwise, the stable assemblage field for area 4 overlaps largely with those of the other areas. The stability of Opx with the bulk compositions of areas 4 and 5 is limited to a maximum pressure of about 0.8 GPa. Since Opx occurs as coronas around Cpx, we assume that Opx growth is post-kinematic (see area 5 in Fig. 8a, where Opx appears as small dark blue dots around the Cpx). Therefore, Opx was not considered to be stable in the sheared paragenesis of area 5. The pseudosections show an overlap of the different stable parageneses for their respective local bulk composition (Fig. 8b). The shared stability field spans the range 1.1–1.3 GPa and $670\text{--}710\ ^\circ\text{C}$. The compositions of individual phases derived from the *Perple_X* model, calculated at 1.2 GPa and $690\ ^\circ\text{C}$, are in good agreement with the measured compositions (Table B2).

5.2.2 Sheared pseudotachylyte in undeformed host rock

Pseudotachylyte in the gabbroic sample (F6) is extremely finely grained and is dominated by millimetre-sized clasts of Pl, which only partly reacted to form Grt and Kfs. The compositional (EDS) map was collected with a step size of $1\ \mu\text{m}$ and $400\ \text{pixel} \times 500\ \text{pixel}$ to account for the small grain size. The area is located between a remnant Pl clast, overgrown by Grt with the rim replaced by Kfs, and a ribbon of mixed Kfs and Pl (Fig. 9a and c). The area in between, with abundant Grt + Ap + Mag, is interpreted to have directly originated from the former pseudotachylyte melt and recrystallized during shearing. Smaller Fsp clasts were masked out during determination of the local bulk composition because reactions and mixing seem to be incomplete. Apatite was removed completely for the calculation of the composition, as P was not measured nor integrated into the modelling. The high content of Fe^{3+} -bearing minerals, such as Ilm and Mag (Fig. 9c), required that the $\text{Fe}^{2+}/\text{Fe}^{3+}$ ratio be calculated using the volume per cent of each iron-bearing phase and their respective $\text{Fe}^{2+}/\text{Fe}^{3+}$ ratios. The calculated pseudosection (Fig. 9b) shows a narrow area for the observed assemblage of Grt + Cpx + Kfs + Qz + Ilm + Rt + Mag + Ky at condi-

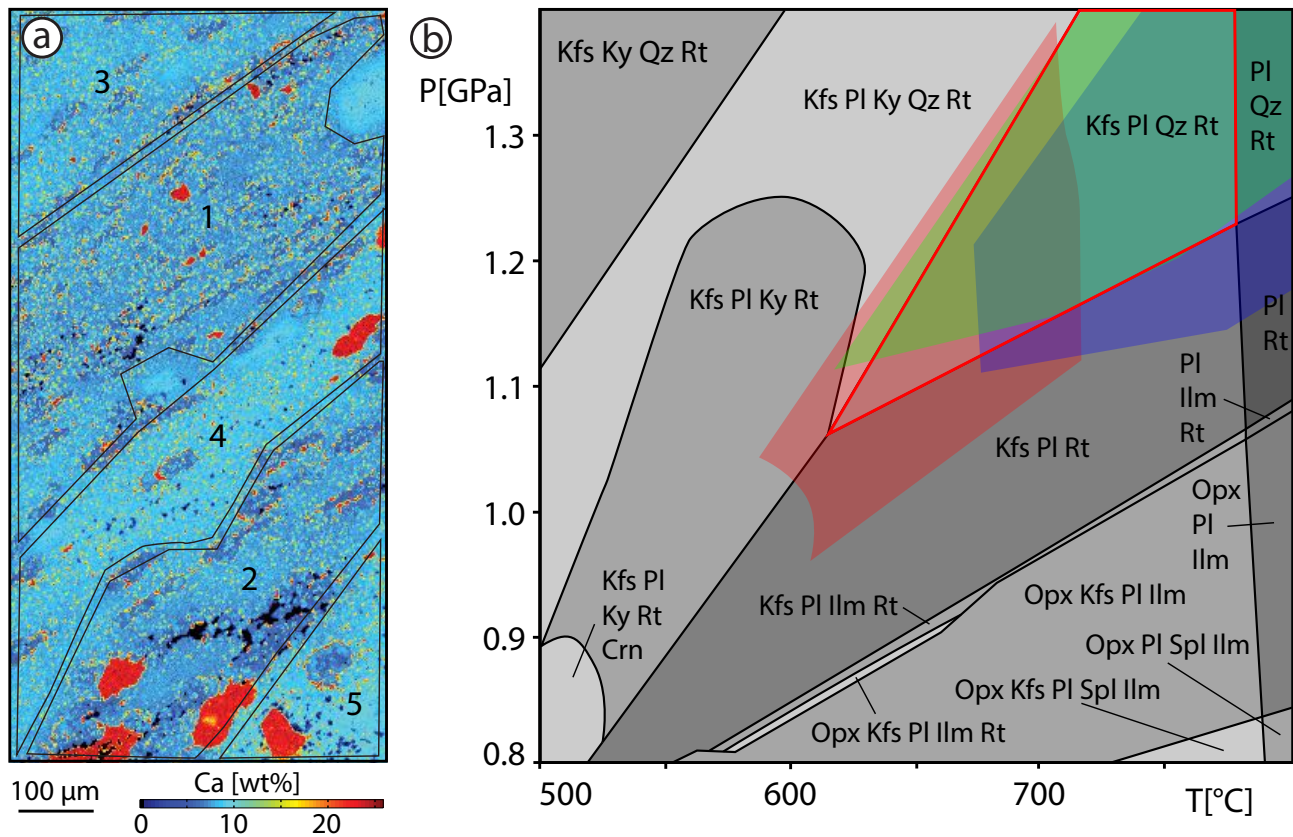


Figure 8. Quantified X-ray map for Ca for sample S5 with a step size of 2 μm and 250 pixel × 500 pixel. Minerals visible: red: Cpx; dark blue: Grt; medium blue: low-Ca Pl; light blue: high-Ca Pl. Areas are defined by the Pl composition. (b) Pseudosection for sample S5, area 2; all parageneses also have Grt + Cpx. Overlays of the observed stability fields for parageneses from pseudosections from the other areas: red: area 1; green: area 3; blue: area 5. For the microstructural context of the area, see Fig. A1.

tions of ca. 1.23 GPa and 590 °C. Rt only appears as exsolution lamellae from the Ti-rich Ilm, which is a reaction taking place close to the PT conditions derived from pseudosection modelling. Initial calculations were carried out with the Cpx solution model used for the other samples, resulting in lower pressures (ca. 1.15 GPa), but predicted much higher Na content in the Cpx of 6.5 wt% compared to the measured 2 wt%. The Cpx model used for the final calculations yields compositions much closer to those measured (Table B3).

6 Summary

Multiple cross-cutting sheared pseudotachylytes can be interpreted as a repeated interplay between brittle and ductile deformation. As a general observation, alternating seismic fracture and aseismic creep could potentially involve even more cycles, but it becomes increasingly difficult to demonstrate because periods of accumulated shear strain localized on the pseudotachylyte zones tend to obscure earlier cross-cutting relationships. Based on this clear evidence for repeated interplay, the pressure and temperature conditions derived from the dynamically recrystallized assemblage

of sheared pseudotachylyte are interpreted to be close to the ambient host rock conditions of pseudotachylyte formation and injection. Thermodynamic modelling results yield values of 1.0–1.3 GPa and 600–700 °C. These results are very similar to the estimated conditions of mylonitization in the Fregon Subdomain during the Petermann Orogeny of 650 °C and 1.2 GPa (Ellis and Maboko, 1992; Camacho et al., 1997). Such metamorphic conditions during the Petermann Orogeny imply an average geothermal gradient of ca. 16–18 °C km⁻¹ for the studied rocks, as already noted by Camacho et al. (1997) and Wex et al. (2017) in the current area and by Scrimgeour and Close (1999) in the Mann Ranges further to the west. These values are low in comparison to those typical of collisional orogens and are more characteristic of cratonic continental crust (Sclater et al., 1980). Indeed, as discussed by Wex et al. (2017), measured heat flow values in the region of the Musgrave Block would imply similar values for the geothermal gradient in the middle to lower crust today.

Lin et al. (2005) described pseudotachylytes in the hanging wall of the Woodroffe Thrust and interpreted them to have been generated during Musgravian Orogeny granulite

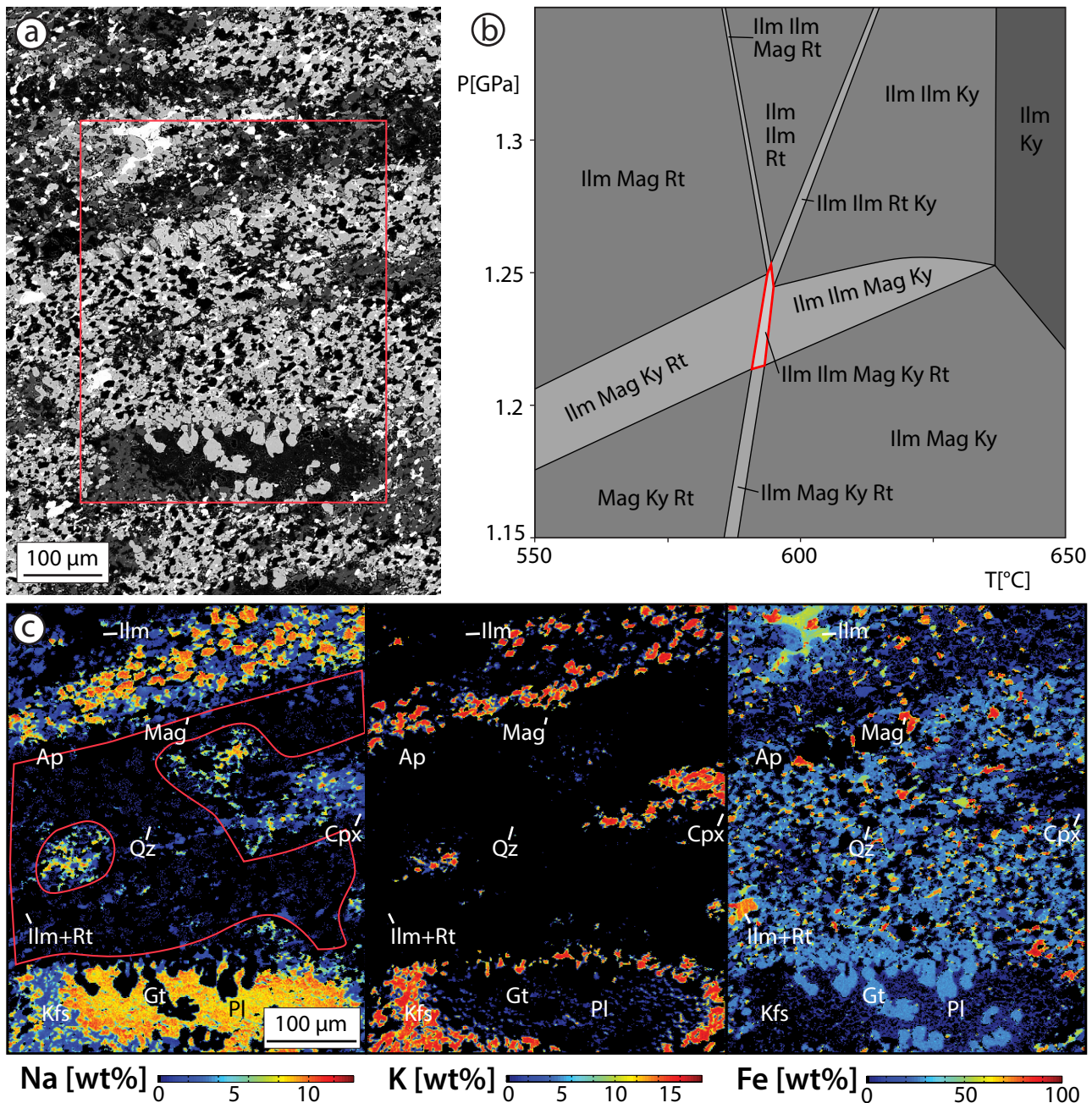


Figure 9. (a) BSE image of a sheared pseudotachylyte with partly recrystallized clasts. The red box indicates the location of the X-ray map. (b) Results from thermodynamic modelling using *Perple_X* with an estimate for the conditions of shearing at about 1.23 GPa and 590 °C. Minerals stable in all fields: Grt, Cpx, Kfs, Qz. (c) Compilation of X-ray maps: Na map shows the incomplete breakdown of a Pl clast in the bottom of the image and the replacement with Kfs (K map). Red outline shows the extracted area of the bulk composition used. Fe map shows abundant Mag (red) and two distinct Ilm populations (green and yellow).

facies metamorphism. This interpretation can be ruled out for two main reasons: (1) the hanging wall of the Woodroffe Thrust experienced granulite facies metamorphism during the ca. 1.2 Ga Musgravian Orogeny but all pseudotachylytes observed in the field and described in Lin (2005) are associated with structures related to the ca. 550 Ma Peter-

mann Orogeny. (2) Pseudotachylytes are present in gabbros (Fig. 3d) and dolerite dykes (Fig. 3b) that intruded during the ca. 1.07 Ga Giles Event and dolerite dykes of the ca. 800 Ma Amata Suite. All these magmatic rocks were intruded well after the granulite facies metamorphism associated with the Musgravian Orogeny.

7 Discussion

Pseudotachylyte development by brittle failure and frictional seismic slip (McKenzie and Brune, 1972; Sibson, 1975) is the favoured mechanism to explain the field observations in the Fregon Subdomain. Alternative processes involving thermal runaway during ductile shear (John et al., 2009; Thielmann et al., 2015) or ductile instabilities (Hobbs et al., 1986) require that a pseudotachylyte-bearing fault necessarily had a ductile precursor. This is not in accord with the observation that many pseudotachylytes occur in otherwise un-sheared host rocks and act as a precursor for subsequent ductile shearing, rather than the other way around. In addition, pseudotachylytes within undeformed host rock do not necessarily contain clasts of mylonites and especially not clasts of ultramylonites. The clasts in pseudotachylytes are also typically angular and show a very wide size range (Figs. 3–6), which is consistent with fracture and brecciation. As discussed above, there can be repeated cycles of pseudotachylyte formation and shearing, with the result that clasts of sheared pseudotachylyte are included in later pseudotachylyte. This very finely grained, sheared material is preserved and not totally consumed by melting. It cannot therefore be argued that all evidence for a precursor ultramylonitic zone is lost because the ultramylonite is always totally melted during subsequent self-localizing thermal runaway (John et al., 2009). We would argue that examples such as shown in Fig. 6, where the pseudotachylyte zone discretely cross-cuts an older granulite facies foliation at a low angle without any evidence for crystal-plastic shearing, is best explained by seismic fracture and pseudotachylyte development by frictional melting. Furthermore, fractured garnet is potentially an indicator for seismic stresses (Trepmann and Stöckhert, 2002) and has been reported to occur specifically in close association with pseudotachylytes (Austrheim et al., 2017). However, in the area of the current study, fracturing of older granulite facies garnet is widespread and not limited to the immediate border of pseudotachylytes.

Brittle deformation under elevated temperatures at depths below the classic brittle–ductile transition zone in felsic continental crust might be explained by local high fluid pressure promoting fracturing (Altenberger et al., 2011; Lund and Austrheim, 2003; Steltenpohl et al., 2006; White, 2012), either due to dehydration reactions or fluid infiltration. However, these mechanisms can be excluded for the examples presented here because most host rocks (in particular the felsic granulites) were already thoroughly dehydrated during the earlier granulite facies Musgravian Orogeny and there is no evidence for fluid infiltration during the Petermann Orogeny. As seen for example in sample S5, the hydrous mineral biotite is restricted to isolated domains, indicating that the activity of OH was low. The absence of hydration associated with pseudotachylyte development in the shear zones described here also indicates that the switch between seismic brittle fracture (pseudotachylyte) and ductile shear-

ing was not induced by infiltration of fluids. This is in marked contrast to what has been previously described in the Bergen Arc (Austrheim, 2013, and references therein) and Lofoten area (Menegon et al., 2017) of Norway, where fluid influx promoted by propagation of the earthquake fracture and associated weakening due to metamorphic reaction localized subsequent ductile shearing. In the absence of elevated pore fluid pressure, high stresses are necessary to fracture rocks under dry, lower-crustal conditions (Sibson and Toy, 2006; Menegon et al., 2017). Natural examples of shear zones with small grain sizes developed under amphibolite facies conditions suggest that the middle and lower crust can be strong (Fitz Gerald et al., 2006; Menegon et al., 2011). This might explain initial fracturing, but in the long term, shear zones show localization of strain and therefore indicate weakening of the rocks. To explain the observed cyclicality of fracture and flow, temporal stress variations are necessary. Transient high stresses in the middle to lower crust have been proposed to result from a downward propagation of stresses from the usual seismogenic zone (< 15 km) during seismic failure (Ellis and Stöckhert, 2004a; Handy and Brun, 2004; Moecher and Steltenpohl, 2009). In the example of the 2015 Gorkha earthquake on the Main Himalayan Thrust (Duputel et al., 2016), there are indeed aftershocks located in the deeper crust following an earthquake at about 15 km depth. Alternatively, for a jelly sandwich style lithospheric model, stress propagating upwards from the seismogenic zone in the strong upper mantle could also explain lower-crustal seismicity. Both of these options are hard to test from field observations. However, the implication of these conceptual models is that for each event recorded in the lower crust (> 30 km depth), such as the pseudotachylytes in the Davenport Shear Zone, there was necessarily a large earthquake with a source in the upper crust or upper mantle. However, this is not observed for many large, lower-crustal earthquakes, for example in the Indian Shield (Mitra et al., 2004). Considering the abundance of pseudotachylytes in the lower-crustal Fregon Subdomain, this would imply a correspondingly large and perhaps unrealistic amount of strong seismicity in the upper crust or upper mantle, suggesting that such localized pseudotachylytes may have had a local trigger in the dry lower continental crust.

8 Conclusions

The Fregon Subdomain documents seismic fracturing under lower-crustal conditions of about 1.0–1.3 GPa and 600–700 °C in an intracontinental setting. Repeated episodes of brittle failure and ductile creep represent recurring earthquake cycles and a strong variation in stress in a water-deficient lower crust. It is questionable whether current models of downward propagation of seismic stresses from the “seismogenic” upper crust can explain the observed repetition of brittle failure and ductile shearing sporadically dis-

tributed over such a wide area. It seems more likely that these earthquake cycles are locally triggered in the dry lower continental crust, at least in this intracontinental setting. Models should therefore take into account temporal and spatial variations in stress in a heterogeneously deforming lower crust.

Data availability. Measured mineral compositions and calculated bulk compositions are given in Tables B1–B3.

Appendix A: Additional images

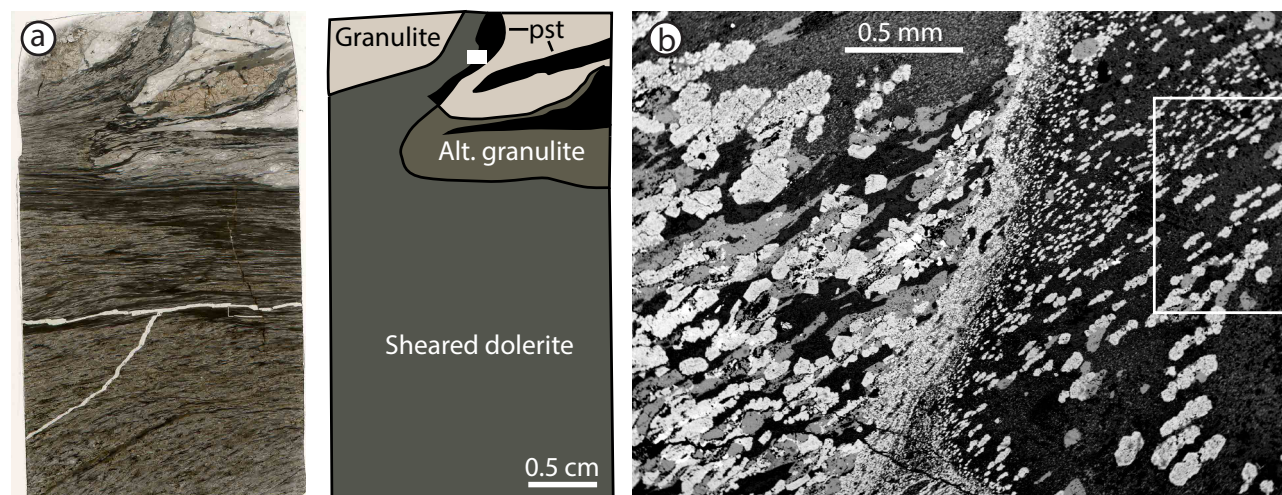


Figure A1. Microstructural context of area mapped in sample S5 (Fig. 8): (a) plane polarized light microscopic image and sketch of the thin section, with the box indicating the image in (b). (b) BSE image of the boundary between dolerite (left) and sheared pseudotachylyte, with the white box indicating area in Fig. 8a.

Appendix B: Bulk and mineral chemistry

Table B1. Representative analysis for sample F68; m: measured; c: calculated from Perple_X at 1.2 GPa and 690 °C. Solution models: Omph(GHP), GlTrTsPg, melt(HP), Chl(HP), Sp(HP), Gt(GCT), Opx(HP), Mica(CHA1), Ctd(HP), St(HP), Bio(TCC), hCrd, Osm(HP), Carp(HP), Sud, feldspar, IlGkPy, Neph(FB), Chum.

	Bulk	Grt_m	Grt_c	Pl_m	Pl_c	Kfs	Kfs_c	Ky_m	Ky_c	Bt_m	Bt_c
Na ₂ O	1.06	0.02	0.00	8.77	8.14	0.89	1.33	0.00	0.00	0.19	0.00
MgO	2.67	8.31	9.28	0.01	0.00	0.00	0.00	0.00	0.00	19.04	18.56
Al ₂ O ₃	12.76	22.61	22.30	21.93	24.20	18.92	18.56	62.40	62.92	14.73	17.67
SiO ₂	70.2	38.55	39.42	58.69	61.49	63.10	65.08	36.66	37.08	37.61	37.61
K ₂ O	3.77	0.02	0.00	0.19	0.55	15.53	14.91	0.00	0.00	10.19	10.76
CaO	1.98	5.83	5.63	5.40	5.61	0.05	0.12	0.03	0.00	0.01	0.00
TiO ₂	0.79	0.08	0.00	0.04	0.00	0.01	0.00	0.04	0.00	3.97	4.75
MnO	0.23	0.92	0.88	0.01	0.00	0.00	0.00	0.05	0.00	0.00	0.01
FeO	5.85	23.72	22.48	0.11	0.00	0.19	0.00	1.12	0.00	7.36	7.60
H ₂ O	0.05 ^a									3 ^b	3.04
Total	99.31	100.06	100.00	95.15	99.99	98.69	100.00	100.29	100.00	96.10	100.00
Cations											
Al		2.04	2.00	1.21	1.26	1.04	1.01	1.99	2.00	1.29	1.48
Si		2.96	3.00	2.75	2.73	2.94	2.99	0.99	1.00	2.79	2.68
		5.00	5.00	3.96	3.99	3.98	4.00	2.98	3.00	4.08	4.16
Fe		1.52	1.43							0.46	0.45
Mg		0.95	1.05							2.11	1.97
Mn		0.06	0.06								
Ca		0.48	0.46	0.27	0.27	0.00	0.01				
Na				0.80	0.70	0.08	0.12				
K				0.01	0.03	0.92	0.87			0.96	0.98
Total		3.01	3.00	1.07	1.00	1.00	1.00			3.53	3.40

^a Calculated: volume per cent Bt and 3 wt% water in Bt. ^b Assumed.

Table B2. Representative analysis for sample S5; m: measured; c: calculated from Perple_X at 1.2 GPa and 690 °C, all mineral chemistry from area 2. Solution models: Omph(GHP), GlTrTsPg, melt(HP), Chl(HP), Sp(HP), Gt(GCT), Opx(HP), Mica(CHA1), Ctd(HP), St(HP), Bio(TCC), hCrld, Osm(HP), Carp(HP), Sud, feldspar, IlGkPy, Neph(FB), Chum.

	Area 1	Area 2	Area 3	Area 4	Area 5	Grt_m	Grt_c	Pl_m	Pl_c	Kfs_m	Kfs_c	Cpx_m	Cpx_c
Na ₂ O	4.42	3.89	5.59	5.60	4.72	0.00	0.00	6.71	6.97	0.19	1.47	1.23	1.47
MgO	4.79	5.37	2.56	2.44	4.16	11.52	11.25	0.06	0.00	0.09	0.00	15.71	15.05
Al ₂ O ₃	21.00	21.15	23.50	23.87	22.33	23.41	22.71	25.97	25.62	19.01	18.72	3.76	2.42
SiO ₂	52.30	52.04	54.99	55.45	53.85	40.16	40.14	59.33	59.30	64.04	64.94	51.85	55.20
K ₂ O	0.58	0.71	0.42	0.47	0.49	0.01	0.00	0.28	0.82	14.29	14.58	0.01	0.00
CaO	8.76	9.02	8.76	9.58	10.12	7.26	7.26	7.44	7.30	0.17	0.29	22.25	23.10
TiO ₂	0.41	0.36	0.38	0.35	0.33	0.03	0.00	0.10	0.00	0.04	0.00	0.20	0.00
MnO	0.15	0.16	0.12	0.11	0.12	0.35	0.52	0.01	0.00	0.00	0.00	0.02	0.00
FeO	5.12	5.92	2.30	1.13	2.47	18.17	18.12	0.13	0.00	0.45	0.00	3.75	2.78
H ₂ O	0.00	0.00	0.00	0.00	0.00								
Total	97.53	98.62	98.62	99.00	98.58	100.91	100.00	100.02	100.00	98.28	100.00	98.78	100.00
Cations													
Al						2.04	2.00	1.36	1.35	1.04	1.01	0.16	0.10
Si						2.97	3.00	2.64	2.65	2.98	2.99	1.92	2.00
						5.01	5.00	4.01	4.00	4.03	4.00		
Fe						1.12	1.13					0.12	0.08
Mg						1.27	1.25					0.87	0.81
Mn						0.02	0.03					0.00	0
Ca						0.58	0.58	0.36	0.35	0.01	0.01	0.88	0.90
Na								0.58	0.60	0.02	0.13	0.09	0.10
K								0.02	0.05	0.85	0.85	0.00	0.00
Total						2.99	3.00	0.95	1.00	0.87	1.00	1.95	1.90

Table B3. Representative analysis for sample F6; m: measured; c: calculated from Perple_X at 1.17 GPa and 590 °C; Fe₂O₃ calculated on the basis of volume per cent of phases. Solution models Gt(WPH), IlHm(A), MtUl(A), Omph(HP), GlTrTsPg, melt(HP), Chl(HP), Sp(HP), Opx(HP), Mica(CHA1), Ctd(HP), St(HP), Bio(TCC), hCrd Sapp(HP), Osm(HP), Carp(HP), Sud, feldspar, Neph(FB).

	Bulk	Gt_m	Gt_c	Kfs_m	Kfs_c	Cpx_m	Cpx_c
Na ₂ O	0.17	0.01	0.00	0.67	0.10	1.99	2.35
MgO	3.76	6.27	5.90	0.04	0.00	11.96	10.18
Al ₂ O ₃	11.75	21.88	21.31	19.54	18.36	4.02	6.76
SiO ₂	53.22	38.79	38.54	62.81	64.75	52.46	49.90
K ₂ O	0.04	0.00	0.00	15.97	16.75	0.03	0.00
CaO	5.09	6.64	7.35	0.08	0.04	20.15	20.88
TiO ₂	3.24	0.10	0.00	0.04	0.00	0.25	0.00
MnO	0.38	0.92	0.82	0.01	0.00	0.09	0.00
FeO	14.90	26.43	25.37	0.69	0.00	9.07	3.84
Fe ₂ O ₃	7.87		0.77				6.08
H ₂ O	0.00						
Total	100.41	101.04	100.05	99.84	100.00	100.01	99.99
Cations							
Al		1.99	1.96	1.07	1.00	0.18	0.30
Si		2.99	3.00	2.93	3.00	1.95	1.87
		4.98	4.96	4.00	4.00		
Fe		1.70	1.70			0.28	0.31
Mg		0.72	0.69			0.66	0.57
Mn		0.06	0.05				
Ca		0.55	0.61	0.00	0.00	0.80	0.84
Na				0.06	0.01	0.14	0.17
K				0.95	0.99		
Total		3.03	3.05	1.01	1.00	1.89	1.89

Appendix C

Table C1. Summary of coordinates (WGS 84) of sample locations discussed in the text.

S5	26.3082 S, 131.7745 E
F6	26.3528 S, 131.8419 E
F31	26.2793 S, 131.4968 E
F44	26.4514 S, 131.9553 E
F68	26.3849 S, 131.7067 E
F71	26.3550 S, 131.8432 E

Author contributions. All authors listed took part in at least two of the three field seasons, which formed the basis of this study. AC's previous knowledge of the field area and the local people was essential for the success of the campaign. SW contributed to the microprobe work. NM and GP developed the initial idea of the study and the project was financed by a Swiss National Science Foundation (SNF) grant awarded to NM. FH prepared the paper with contributions from all co-authors.

Competing interests. The authors declare that they have no conflict of interest.

Acknowledgements. We want to thank Torgeir B. Andersen and Uwe Altenberger for their thorough and critical reviews. We gratefully acknowledge permission granted to work on the Anangu Pitjantjatjara Yankunytjatjara Lands (APY) to carry out our field work in the area. The Northern Territory Geological Survey (NTGS) and Basil Tikoff (Department of Geoscience, University of Wisconsin) are thanked for their logistical support and the Nicolle family of Mulga Park station for their hospitality. The Scientific Center for Optical and Electron Microscopy (ScopeM) provided the facilities for the scanning electron microscopy work, and help by Karsten Kunze is especially acknowledged. The EPMA work was supported by Eric Reusser and Lukas Martin. This project was financed by the Swiss National Science Foundation (SNF) grant 200021_146745 and by the University of Padova (BIRD175145/17: The geological record of deep earthquakes: the association pseudotachylyte-mylonite).

Edited by: Federico Rossetti

Reviewed by: Torgeir B. Andersen and Uwe Altenberger

References

- Aitken, A. and Betts, P.: Constraints on the Proterozoic supercontinent cycle from the structural evolution of the south-central Musgrave Province, central Australia, *Precambrian Res.*, 168, 284–300, <https://doi.org/10.1016/j.precamres.2008.10.006>, 2009.
- Aitken, A. R. A., Smithies, R. H., Dentith, M. C., Joly, A., Evans, S., and Howard, H. M.: Magmatism-dominated intracontinental rifting in the Mesoproterozoic: the Ngaanyatjarra Rift, central Australia, *Gondwana Res.*, 24, 886–901, <https://doi.org/10.1016/j.gr.2012.10.003>, 2013.
- Altenberger, U., Prosser, G., Ruggiero, M., and Gunter, C.: Microstructure and petrology of a Calabrian garnet-bearing pseudotachylyte – a link to lower-crustal seismicity, *Geol. Soc. Spec. Publ.*, 359, 153–168, <https://doi.org/10.1144/SP359.9>, 2011.
- Altenberger, U., Prosser, G., Grande, A., Günter, C., and Langone, A.: A seismogenic zone in the deep crust indicated by pseudotachylytes and ultramylonites in granulite-facies rocks of Calabria (Southern Italy), *Contrib. Mineral. Petr.*, 166, 975–994, <https://doi.org/10.1007/s00410-013-0904-3>, 2013.
- Austrheim, H.: Fluid and deformation induced metamorphic processes around Moho beneath continent collision zones: examples from the exposed root zone of the Caledonian mountain belt, W-Norway, *Tectonophysics*, 609, 620–635, <https://doi.org/10.1016/j.tecto.2013.08.030>, 2013.
- Austrheim, H. and Boundy, T. M.: Pseudotachylytes generated during seismic faulting and eclogitization of the deep crust, *Science*, 265, 82–83, <https://doi.org/10.1126/science.265.5168.82>, 1994.
- Austrheim, H., Erambert, M., and Boundy, T. M.: Garnets recording deep crustal earthquakes, *Earth Planet. Sc. Lett.*, 139, 223–238, [https://doi.org/10.1016/0012-821X\(95\)00232-2](https://doi.org/10.1016/0012-821X(95)00232-2), 1996.
- Austrheim, H., Dunkel, K. G., Plümper, O., Ildefonse, B., Liu, Y., and Jamtveit, B.: Fragmentation of wall rock garnets during deep crustal earthquakes, *Science Advances*, 3, e1602067, <https://doi.org/10.1126/sciadv.1602067>, 2017.
- Burov, E. B. and Watts, A. B.: The long-term strength of continental lithosphere: “jelly sandwich” or “crème brûlée”?, *GSA Today*, 16, 4, [https://doi.org/10.1130/1052-5173\(2006\)016<4:TLTSC>2.0.CO;2](https://doi.org/10.1130/1052-5173(2006)016<4:TLTSC>2.0.CO;2), 2006.
- Camacho, A. and Fanning, C. M.: Some isotopic constraints on the evolution of the granulite and upper amphibolite facies terranes in the eastern Musgrave Block, central Australia, *Precambrian Res.*, 71, 155–181, 1995.
- Camacho, A. and McDougall, I.: Intracratonic, strike-slip partitioned transpression and the formation and exhumation of eclogite facies rocks: an example from the Musgrave Block, central Australia, *Tectonics*, 19, 978–996, 2000.
- Camacho, A., Vernon, R. H., and Fitz Gerald, J. D.: Large volumes of anhydrous pseudotachylyte in the Woodroffe Thrust, eastern Musgrave Ranges, Australia, *J. Struct. Geol.*, 17, 371–383, 1995.
- Camacho, A., Compston, W., McCulloch, M., and McDougall, I.: Timing and exhumation of eclogite facies shear zones, Musgrave Block, central Australia, *J. Metamorph. Geol.*, 15, 735–751, 1997.
- Clarke, G. L. and Norman, A. R.: Generation of pseudotachylyte under granulite facies conditions, and its preservation during cooling, *J. Metamorph. Geol.*, 11, 319–335, <https://doi.org/10.1111/j.1525-1314.1993.tb00151.x>, 1993.
- Connolly, J. A. D.: Multivariable phase diagrams; an algorithm based on generalized thermodynamics, *Am. J. Sci.*, 290, 666–718, <https://doi.org/10.2475/ajs.290.6.666>, 1990.
- Deichmann, N. and Rybach, L.: Earthquakes and temperatures in the lower crust below the northern Alpine foreland of Switzerland, *Properties and processes of earth's lower crust*, *Geoph. Monog. Series*, 51, 197–213, 1989.
- Di Toro, G. and Pennacchioni, G.: Superheated friction-induced melts in zoned pseudotachylytes within the Adamello tonalites (Italian Southern Alps), *J. Struct. Geol.*, 26, 1783–1801, <https://doi.org/10.1016/j.jsg.2004.03.001>, 2004.
- Duputel, Z., Vergne, J., Rivera, L., Wittlinger, G., Farra, V., and Hetényi, G.: The 2015 Gorkha earthquake: a large event illuminating the Main Himalayan Thrust fault, *Geophys. Res. Lett.*, 43, 2517–2525, <https://doi.org/10.1002/2016GL068083>, 2016.
- Edgoose, C. J., Close, D. F., and Scrimgeour, I.: Australia 1: 250 000 geological series, Sheet SG 52-7, Northern Territory Department of Mines and Energy, Darwin, NT, Australia, 1999.
- Ellis, D. J. and Maboko, M. A. H.: Precambrian tectonics and the physicochemical evolution of the continental crust. I. The gabbro-eclogite transition revisited, *Precambrian Res.*, 55, 491–506, 1992.
- Ellis, S. and Stöckhert, B.: Elevated stresses and creep rates beneath the brittle-ductile transition caused by seismic fault-

- ing in the upper crust, *J. Geophys. Res.*, 109, B05407, <https://doi.org/10.1029/2003JB002744>, 2004.
- Evins, P. M., Smithies, R. H., Howard, H. M., Kirkland, C. L., Wingate, M. T. D., and Bodorkos, S.: Redefining the Giles Event within the setting of the 1120–1020 Ma Ngaanyatjarra Rift, West Musgrave Province, central Australia, Geological Society of Western Australia, East Perth, W.A., 2010.
- Fitz Gerald, J. D., Mancktelow, N. S., Pennacchioni, G., and Kunze, K.: Ultrafine-grained quartz mylonites from high-grade shear zones: evidence for strong dry middle to lower crust, *Geology*, 34, 369, <https://doi.org/10.1130/G22099.1>, 2006.
- Förster, H.-J. and Harlov, D. E.: Monazite-(Ce)–huttonite solid solutions in granulite-facies metabasites from the Ivrea–Verbano Zone, Italy, *Mineral. Mag.*, 63, 587–587, 1999.
- Geological Survey of South Australia: Dataset SA_RAD_TH, Thorium map of South Australia, Adelaide, SA, Australia, 2011.
- Glikson, A. Y. and Australian Geological Survey Organisation (Eds.): *Geology of the western Musgrave Block, central Australia, with particular reference to the mafic-ultramafic Giles Complex*, Australian Govt. Pub. Service, Canberra, 1996.
- Goetze, C. and Evans, B.: Stress and temperature in the bending lithosphere as constrained by experimental rock mechanics, *Geophys. J. Int.*, 59, 463–478, 1979.
- Gray, C. M.: Geochronology of granulite-facies gneisses in the western Musgrave Block, central Australia, *J. Geol. Soc. Aust.*, 25, 403–414, <https://doi.org/10.1080/00167617808729050>, 1978.
- Handy, M. and Brun, J.-P.: Seismicity, structure and strength of the continental lithosphere, *Earth Planet. Sc. Lett.*, 223, 427–441, <https://doi.org/10.1016/j.epsl.2004.04.021>, 2004.
- Hobbs, B. E., Ord, A. and Teyssier, C.: Earthquakes in the Ductile Regime?, *PAGEOPH*, 124, 309–336, 1986.
- Holland, T. J. B. and Powell, R.: An internally consistent thermodynamic data set for phases of petrological interest, *J. Metamorph. Geol.*, 16, 309–343, 1998.
- Jackson, J.: Faulting, flow, and the strength of the continental lithosphere, *Int. Geol. Rev.*, 44, 39–61, 2002a.
- Jackson, J.: Strength of the continental lithosphere: time to abandon the jelly sandwich?, *GSA Today*, 12, 4–9, [https://doi.org/10.1130/1052-5173\(2002\)012<0004:SOTCLT>2.0.CO;2](https://doi.org/10.1130/1052-5173(2002)012<0004:SOTCLT>2.0.CO;2), 2002b.
- Jackson, J. A., Austrheim, H., McKenzie, D., and Priestley, K.: Metastability, mechanical strength, and the support of mountain belts, *Geology*, 32, 625–628, 2004.
- John, T., Medvedev, S., Rüpke, L. H., Andersen, T. B., Podladchikov, Y. Y., and Austrheim, H.: Generation of intermediate-depth earthquakes by self-localizing thermal runaway, *Nat. Geosci.*, 2, 137–140, <https://doi.org/10.1038/ngeo419>, 2009.
- Kirkpatrick, J. D. and Rowe, C. D.: Disappearing ink: how pseudotachylytes are lost from the rock record, *J. Struct. Geol.*, 52, 183–198, <https://doi.org/10.1016/j.jsg.2013.03.003>, 2013.
- Kohlstedt, D. L., Evans, B., and Mackwell, S. J.: Strength of the lithosphere: constraints imposed by laboratory experiments, *J. Geophys. Res.-Sol. Ea.*, 100, 17587–17602, <https://doi.org/10.1029/95JB01460>, 1995.
- Lambert, I. B. and Heier, K. S.: Geochemical investigations of deep-seated rocks in the Australian shield, *Lithos*, 1, 30–53, [https://doi.org/10.1016/S0024-4937\(68\)80033-7](https://doi.org/10.1016/S0024-4937(68)80033-7), 1968.
- Lanari, P., Vidal, O., De Andrade, V., Dubacq, B., Lewin, E., Grosch, E. G., and Schwartz, S.: XMapTools: a MATLAB[®]-based program for electron microprobe X-ray image processing and geothermobarometry, *Comput. Geosci.*, 62, 227–240, <https://doi.org/10.1016/j.cageo.2013.08.010>, 2014.
- Li, Z.-X. and Evans, D. A.: Late Neoproterozoic 40 intraplate rotation within Australia allows for a tighter-fitting and longer-lasting Rodinia, *Geology*, 39, 39–42, 2011.
- Lin, A., Maruyama, T., Aaron, S., Michibayashi, K., Camacho, A., and Kano, K.: Propagation of seismic slip from brittle to ductile crust: evidence from pseudotachylyte of the Woodroffe thrust, central Australia, *Tectonophysics*, 402, 21–35, <https://doi.org/10.1016/j.tecto.2004.10.016>, 2005.
- Lund, M. G. and Austrheim, H.: High-pressure metamorphism and deep-crustal seismicity: evidence from contemporaneous formation of pseudotachylytes and eclogite facies coronas, *Tectonophysics*, 372, 59–83, [https://doi.org/10.1016/S0040-1951\(03\)00232-4](https://doi.org/10.1016/S0040-1951(03)00232-4), 2003.
- Maddock, R. H., Grocott, J., and Van Nes, M.: Vesicles, amygdaloids and similar structures in fault-generated pseudotachylytes, *Lithos*, 20, 419–432, 1987.
- Major, R. B. and Connor, C. H. H.: The Musgrave Block, in: *The Geology of South Australia, Vol. 1. The Precambrian*, edited by: Drexel, J. F., Preiss, W. P., and Parker, A. J., Geological Survey of South Australia, Adelaide, SA, Australia, Bulletin 54, 156–167, 1993.
- McKenzie, D. and Brune, J. N.: Melting on fault planes during large earthquakes, *Geophys. J. Int.*, 29, 65–78, 1972.
- Menegon, L., Nasipuri, P., Stünitz, H., Behrens, H., and Ravna, E.: Dry and strong quartz during deformation of the lower crust in the presence of melt, *J. Geophys. Res.*, 116, B10410, <https://doi.org/10.1029/2011JB008371>, 2011.
- Menegon, L., Pennacchioni, G., Malaspina, N., Harris, K., and Wood, E.: Earthquakes as precursors of ductile shear zones in the dry and strong lower crust, *Geochem. Geophys. Geos.*, 4356–4374, <https://doi.org/10.1002/2017GC007189>, 2017.
- Milligan, P. R. and Nakamura, A.: Total Magnetic Intensity (TMI) image 2015 greyscale, Geoscience Australia, Canberra, ACT, Australia, 2015.
- Mitra, S., Priestley, K., Bhattacharyya, A. K., and Gaur, V. K.: Crustal structure and earthquake focal depths beneath northeastern India and southern Tibet: crustal structure beneath NE India, *Geophys. J. Int.*, 160, 227–248, <https://doi.org/10.1111/j.1365-246X.2004.02470.x>, 2004.
- Moecher, D. P. and Steltenpohl, M. G.: Direct calculation of rupture depth for an exhumed paleoseismogenic fault from mylonitic pseudotachylyte, *Geology*, 37, 999–1002, 2009.
- Moecher, D. P. and Steltenpohl, M. G.: Petrological evidence for coseismic slip in extending middle-lower continental crust: Heier's zone of pseudotachylyte, north Norway, *Geol. Soc. Spec. Publ.*, 359, 169–186, <https://doi.org/10.1144/SP359.10>, 2011.
- Orlandini, O., Mahan, K. H., Regan, S., Williams, M. L., and Leite, A.: Pseudotachylytes of the deep crust: examples from a granulite-facies shear zone, AGU Fall Meeting Abstracts, T53C–2606, Moscone Center, San Francisco, USA, 2013.
- Pennacchioni, G. and Cesare, B.: Ductile-brittle transition in pre-Alpine amphibolite facies mylonites during evolution from water-present to water-deficient conditions (Mont Mary nappe, Italian Western Alps), *J. Metamorph. Geol.*, 15, 777–791, 1997.

- Pittarello, L., Pennacchioni, G., and Di Toro, G.: Amphibolite-facies pseudotachylytes in Premosello metagabbro and felsic mylonites (Ivrea Zone, Italy), *Tectonophysics*, 580, 43–57, <https://doi.org/10.1016/j.tecto.2012.08.001>, 2012.
- Price, N. A., Johnson, S. E., Gerbi, C. C., and West, D. P.: Identifying deformed pseudotachylyte and its influence on the strength and evolution of a crustal shear zone at the base of the seismogenic zone, *Tectonophysics*, 518–521, 63–83, <https://doi.org/10.1016/j.tecto.2011.11.011>, 2012.
- Rao, N. P., Tsukuda, T., Kosuga, M., Bhatia, S. C., and Suresh, G.: Deep lower crustal earthquakes in central India: inferences from analysis of regional broadband data of the 1997 May 21, Jabalpur earthquake, *Geophys. J. Int.*, 148, 132–138, 2002.
- Reyners, M., Eberhart-Phillips, D., and Stuart, G.: The role of fluids in lower-crustal earthquakes near continental rifts, *Nature*, 446, 1075–1078, <https://doi.org/10.1038/nature05743>, 2007.
- Scharbert, P. D. H. G., Korkisch, P. D. J., and Steffan, D. I.: Uranium, thorium and potassium in granulite facies rocks, Bohemian Massif, Lower Austria, Austria, *Tscher. Miner. Petrog.*, 23, 223–232, <https://doi.org/10.1007/BF01083102>, 1976.
- Sclater, J. G., Jaupart, C., and Galson, D.: The heat flow through oceanic and continental crust and the heat loss of the Earth, *Rev. Geophys.*, 18, 269, <https://doi.org/10.1029/RG018i001p00269>, 1980.
- Scrimgeour, I. R. and Close, D. F.: Regional high-pressure metamorphism during intracratonic deformation: the Petermann Orogeny, central Australia, *J. Metamorp. Geol.*, 17, 557–572, 1999.
- Sibson, R. H.: Generation of pseudotachylyte by ancient seismic faulting, *Geophys. J. Int.*, 43, 775–794, 1975.
- Sibson, R. H.: Transient discontinuities in ductile shear zones, *J. Struct. Geol.*, 2, 165–171, 1980.
- Sibson, R. H. and Toy, V. G.: The habitat of fault-generated pseudotachylyte: presence vs. absence of friction-melt, in: *Geophysical Monograph Series*, vol. 170, edited by: Abercrombie, R., McGarr, A., Kanamori, H., and Di Toro, G., American Geophysical Union, Washington, DC, 153–166, 2006.
- Singer, J., Diehl, T., Husen, S., Kissling, E., and Duretz, T.: Alpine lithosphere slab rollback causing lower crustal seismicity in northern foreland, *Earth Planet. Sc. Lett.*, 397, 42–56, <https://doi.org/10.1016/j.epsl.2014.04.002>, 2014.
- Smithies, R. H., Howard, H. M., Evins, P. M., Kirkland, C. L., Kelsey, D. E., Hand, M., Wingate, M. T. D., Collins, A. S., and Belousova, E.: High-temperature granite magmatism, crust-mantle interaction and the mesoproterozoic intracontinental evolution of the Musgrave province, central Australia, *J. Petrol.*, 52, 931–958, <https://doi.org/10.1093/petrology/egr010>, 2011.
- Steltenpohl, M. G., Kassos, G., and Andresen, A.: Retrograded eclogite-facies pseudotachylytes as deep-crustal paleoseismic faults within continental basement of Lofoten, north Norway, *Geosphere*, 2, 61–72, <https://doi.org/10.1130/GES00035.1>, 2006.
- Thielmann, M., Rozel, A., Kaus, B. J. P., and Ricard, Y.: Intermediate-depth earthquake generation and shear zone formation caused by grain size reduction and shear heating, *Geology*, 43, 791–794, <https://doi.org/10.1130/G36864.1>, 2015.
- Trepmann, C. A. and Stöckhert, B.: Cataclastic deformation of garnet: a record of synseismic loading and postseismic creep, *J. Struct. Geol.*, 24, 1845–1856, [https://doi.org/10.1016/S0191-8141\(02\)00004-4](https://doi.org/10.1016/S0191-8141(02)00004-4), 2002.
- Ueda, T., Obata, M., Di Toro, G., Kanagawa, K., and Ozawa, K.: Mantle earthquakes frozen in mylonitized ultramafic pseudotachylytes of spinel-lherzolite facies, *Geology*, 36, 607, <https://doi.org/10.1130/G24739A.1>, 2008.
- Wade, B. P., Barovich, K. M., Hand, M., Scrimgeour, I. R., and Close, D. F.: Evidence for early Mesoproterozoic arc magmatism in the Musgrave Block, central Australia: implications for Proterozoic crustal growth and tectonic reconstructions of Australia, *J. Geol.*, 114, 43–63, 2006.
- Wenk, H. R. and Weiss, L. E.: Al-rich calcic pyroxene in pseudotachylyte: an indicator of high pressure and high temperature?, *Tectonophysics*, 84, 329–341, 1982.
- Wex, S., Mancktelow, N. S., Hawemann, F., Camacho, A., and Pennacchioni, G.: Geometry of a large-scale, low-angle, mid-crustal thrust (Woodroffe Thrust, central Australia), *Tectonics*, 36, 2447–2476, <https://doi.org/10.1002/2017TC004681>, 2017.
- Whitney, D. L. and Evans, B. W.: Abbreviations for names of rock-forming minerals, *American Mineralogist*, 95, 185–187, <https://doi.org/10.2138/am.2010.3371>, 2010.
- White, J. C.: Transient discontinuities revisited: pseudotachylyte, plastic instability and the influence of low pore fluid pressure on deformation processes in the mid-crust, *J. Struct. Geol.*, 18, 1471–1486, 1996.
- White, J. C.: Instability and localization of deformation in lower crust granulites, Minas fault zone, Nova Scotia, Canada, *Geol. Soc. Spec. Publ.*, 224, 25–37, <https://doi.org/10.1144/GSL.SP.2004.224.01.03>, 2004.
- White, J. C.: Paradoxical pseudotachylyte – fault melt outside the seismogenic zone, *J. Struct. Geol.*, 38, 11–20, <https://doi.org/10.1016/j.jsg.2011.11.016>, 2012.
- Xu, Y., Roecker, S. W., Wei, R.-P., Zhang, W.-L., and Wei, B.: Analysis of seismic activity in the crust from earthquake relocation in the central Tien Shan, *Chinese J. Geophys.*, 48, 1388–1396, 2005.
- Zhao, J., McCulloch, M., and Korsch, R. J.: Characterisation of a plume-related ~800 Ma magmatic event and its implications for basin formation in central-southern Australia, *Earth Planet. Sc. Lett.*, 121, 349–367, 1994.